



VxBlock Central Workflow Automation

Deliver services faster and at lower cost using engineered and validated workflows as part of your VMware cloud operating model

VxBlock Central M&O Software (Available At No Cost)

- **Base** – Manage system and improve compliance with inventory reporting and alerting and integrated with CloudIQ for advanced storage array reporting and management
- ✓ **Workflow Automation** – Provision infrastructure on-demand using engineered workflows through vRealize Orchestrator
- **Advanced Analytics** – View capacity and KPIs to discover deeper actionable insights through vRealize Operations
- **Lifecycle Management** (future avail.) – Apply modular/component level upgrades through “guided path” workflows to optimize system performance

VxBlock Central
Workflow
Automation

VxBlock Central
Lifecycle
Management

VxBlock Central
Advanced
Analytics

VxBlock Central Base

Key Benefits

Lower TCO

Eliminate manual operational processes and spend less time on infrastructure administration throughout the VxBlocks' life span

Added Flexibility

Expand compute, storage and other resources as needed with highly automated provisioning and orchestration workflows

Reduced Operational Costs

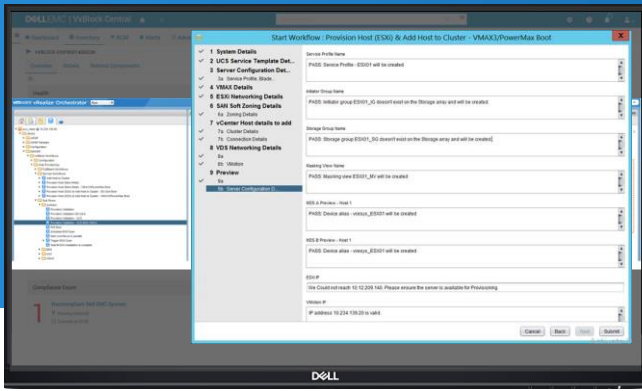
Workflows are maintained by Dell EMC so you don't have to, the latest software and firmware versions across the infrastructure are continuously updated

Higher Efficiency

Automated Workflows streamlines operations by automating daily tasks (example: a 5 blade expansion required 10 steps, 5 tools and 1 day - now requires 1 step, 1 tool and less than 1 hour)

Faster Time to Market

Accelerate delivery of new services and applications; reduce risk to existing services and applications when making infrastructure changes



VxBlock Central Workflow Automation

Converged Infrastructure architects and engineers develop and maintain the VxBlock Central workflow library based on CI best practices

Library as of Sept. 25, 2020

Compute/Host Management

VxBlock System 740/1000 (PowerMax/VMAX)

- Provision ESXi hosts – PowerMax/VMAX boot
- Provision ESXi hosts – PowerMax/VMAX boot (rollback capability)
- Provision bare metal server – PowerMax/VMAX boot
- Provision bare metal server – Cisco UCS
- Add host to vSphere cluster

VxBlock System 350/1000 (Unity)

- Provision ESXi hosts – Unity boot (rollback capability)
- Decommission host from cluster

VxBlock System 540/1000 (XtremIO X2)

- Provision ESXi hosts – XtremIO boot
- Provision ESXi cluster

VxBlock System 350/540/740/1000

- Move ESXi host from cluster to cluster
- Provision ESXi hosts – SD Boot
- Remove host from production cluster
- Create new service profile template
- Create datastore cluster with configuration
- Remove VMFS datastores from datastore cluster
- Add VMFS datastores to datastore cluster
- Create VDS and default port groups

VxBlock System 350/740/1000

- Provision ESXi cluster

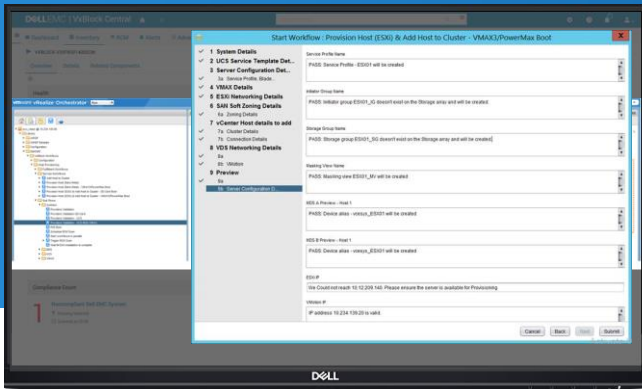
Snapshot Management

VxBlock System 740/1000 (PowerMax/VMAX)

- Create snapshot of storage group
- Rename snapshot of storage group
- Delete snapshot of storage group

VxBlock System 350/1000 (Unity)

- Create snapshot of block LUN
- Export snapshot of block LUN to a host
- Delete snapshot of block LUN



VxBlock Central Workflow Automation

Converged Infrastructure architects and engineers develop and maintain the VxBlock Central workflow library based on CI best practices

Library as of Sept. 25, 2020

Storage Management

VxBlock System 740/1000 (PowerMax/VMAX)

- Create storage volume and VMFS datastore for ESXi cluster/host
- Expand storage volume and increase VMFS capacity of existing datastore
- Remove VMFS datastore and associated storage volume
- Delete VMFS datastore and associated storage volume
- Add datastore to existing ESXi cluster
- Expand block volume
- Delete block volume
- Create a new LUN and datastore; move VMs to new datastore
- Create new LUN and attach RDM to VM

VxBlock System 350/1000 (Unity)

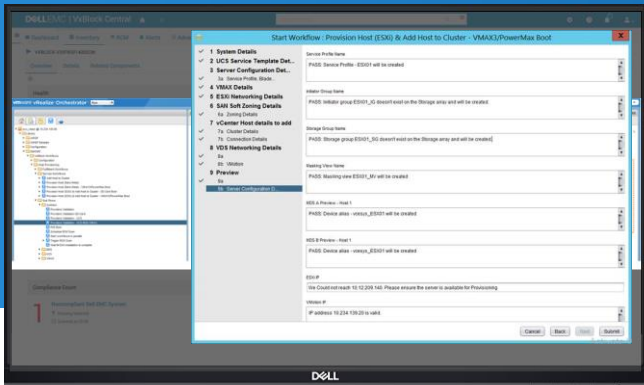
- Create storage LUN and VMFS datastore for ESXi cluster/host
- Create a new LUN and datastore; move VMs to new datastore
- Create new LUN and attach RDM to VM
- Expand storage LUN and increase VMFS capacity of existing datastore
- Remove VMFS datastore and associated storage LUN
- Delete VMFS datastore and associated storage LUN
- Add datastore to existing ESXi cluster

VxBlock System 540/1000 (XtremIO X2)

- Create storage LUN and VMFS datastore for ESXi cluster/host
- Create a new LUN and datastore; move VMs to new datastore
- Create new LUN and attach RDM to VM
- Expand storage LUN and increase VMFS capacity of existing datastore
- Remove VMFS datastore and associated storage LUN
- Delete VMFS datastore and associated storage LUN
- Add datastore to existing ESXi cluster

VxBlock Central Workflow Automation

Learn more and get started



Eliminating manual steps and multiple tools

Provision host (ESXi) using storage array boot LUN



FAQs

What does the Workflow Automation license include?

It includes a vRealize Orchestrator plug-in that provides:

- Pre-built automated workflows in extensible templates to eliminate manual daily administrative tasks
- Orchestration services to execute the workflows to automate IT tasks such as compute resource expansion

How do I access the workflow library?

Download the latest software package and the latest workflows from the Software Center. Please contact your account team for additional information.

What VxBlock Systems are supported for VxBlock Central Workflow Automation?

VxBlock System 1000 and VxBlock (or Vblock) Systems 350, 540 and 740

Key resources

- Download the software <https://support-dell.com.secure.force.com/>
- Take an interactive demo http://interactivedemos.democenter.dell.com/v2/VxBlock_Central_2.5/index.html
- View the Workflow Automation Library guide <https://www.dell.com/resources/en-us/asset/manual-warranty-informations/products/converged-infrastructure/dell-emc-converged-system-vxblock-central-automation-library.pdf>