

OpenManage Systems Management

Businesses are under pressure to increase results. They adopt new technology and add more layers to manage. As the infrastructure grows, your IT must grow to manage it. Smart systems management tools from Dell EMC can help IT get there. Designed for today's IT, the OpenManage portfolio includes the tools to manage all aspects. Manage PowerEdge servers from small business through enterprise. Stay ahead of business changes and:

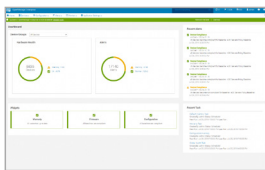
- Help manage operations faster
- Unify management for simpler access
- Get better availability and visibility
- Be flexible to respond quickly
- See the whole data center with one click

Remove the complex and manage simply, with Dell EMC.



OpenManage Portfolio

OpenManage Enterprise & Essentials



Dell EMC OpenManage Enterprise helps IT simplify and automate management. As a single management layer, IT can be more efficient, save costs and return value to the business. A unified approach manages all Dell EMC PowerEdge tower, rack and modular systems including MX, FX and VRTX. Deploy easily as a virtual appliance in ESXi, Hyper-V and KVM installs.

OpenManage Enterprise helps IT:

- Managing up to 8000 devices
- Automated server configuration
- Create and assign virtual identities
- Create stateless servers
- Monitor third-party hardware
- Simpler firmware updates
- Monitor compliance easily
- Use template-based processes quickly
- Integrate with OpenManage Mobile

“So by switching to OpenManage Enterprise, we can now deploy a configuration and updates on 300 servers with one person within half an hour, while before it took one person an entire day to update 15 servers. We all wear several hats on the sysadmin team for the Alice experiment it allow our people to focus on other strategic tasks.” –

**Ulrich Fuchs, IT Service Manager,
Alice Experiment at CERN**

Dell EMC OpenManage Essentials offers similar features to monitor and manage servers with a simpler feature set and reduced scope.

Further simplify server and OS deployment with **Server Configuration Management**. The fee-based licenses for all Dell EMC servers reduces human error and configuration risks. IT can easily setup settings based on service tags and ensure installs are within compliance.

OpenManage Integrations and Connections

Efficiently manage Dell EMC hardware with automated processes and preserve your investments in existing third party systems management solutions.

OpenManage Integrations enable you to deploy, configure, update and monitor within popular management consoles such as VMware vCenter (OMIVV), Microsoft System Center (OMIMSSC), and BMC TrueSight. Deploy pre-built Ansible modules to manage deployment within your devops environment.

OpenManage Connections are plug-ins to popular systems management solutions such as Nagios/Nagios XI, Micro Focus, and IBM Tivoli, enabling you to extract rich information about the health of Dell EMC devices.



OpenManage Mobile



Dell EMC OpenManage Mobile makes monitoring easy for IT. Installs easily on iOS and Android devices for an instant view of infrastructure health. OpenManage Mobile sees all PowerEdge servers as well as embedded management including iDRAC and the OpenManage consoles.

Readily access all aspects anywhere via mobile including:

- Server inventory
- Alerts and notifications
- Health status and system logs
- Automatic receipts on mobile
- Access iDRAC directly to review LCD functions
- Service tags and warranty

OpenManage Power Center

Enhance your visibility into server power consumption and utilization through the OpenManage Power Center (OMPC) .

- Optimize your IT infrastructure's performance for power consumption
- Record power and CPU consumption
- Maintain optimal uptime
- Throttle down power option when temperatures rise
- Tight integration with iDRAC
- Eliminate temperature guesswork



iDRAC



The integrated Dell Remote Access Controller (iDRAC) with Lifecycle Controller provides embedded management in every Dell PowerEdge which helps you deploy, update, monitor and maintain servers with or without a systems management software agent, agent-free operation means that with OpenManage technology, your new server is ready to deploy a new OS or accept new settings without installing extra software. Powerful, easy-to-use, remote management and configuration options can alert you when an issue occurs.

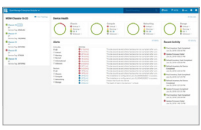
“We can deploy our PowerEdge servers in minutes because iDRAC is always on and integrates with Dell OpenManage Essentials.”

– Aldo Armiento,
Chief Technology Officer,
Immobiliare

- Anytime, anywhere, remote management and configuration
- Automation of provisioning, deployment, servicing, patching, updating
- Automated predictive support with embedded SupportAssist
- Zero-touch automatic server deployment
- Out-of-band deployment, update and maintenance capabilities

Modular Servers Dashboards

OpenManage Enterprise - Modular Edition



OpenManage Enterprise Modular (OME-Modular) systems management delivers comprehensive compute, storage and networking management, enabled by a single GUI with intelligent automation, for PowerEdge MX servers.

- Manage up to 80 servers across 10 chassis
- Comprehensive RESTful API, GUI
- Remotely manage with OMM, Quick Sync 2
- Integrate directly with iDRAC9 and scale up to OpenManage Enterprise or Essentials

Chassis Management Controller

Manage multiple server chassis with the Chassis Management Controller (CMC). Deployed for PowerEdge FX, VRTX and M1000e chassis, CMC enables simplified management of all elements contained within



- Monitor multiple chassis
- Simplified GUI/CLI interface for fast setup
- Converged management of all nodes
- Integrate directly with iDRAC9

Dell EMC Services

Our technologies and experts save you time and effort

Dell EMC deployment, automated support and education services enhance your systems management experience.

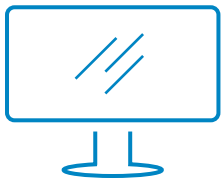
Support Automation

SupportAssist streamlines the support process through automated issue detection and notification, predictive alerts and On-demand reporting. SupportAssist easily integrates with OpenManage Enterprise/Essentials. Using failure analysis SupportAssist, with ProSupport Plus entitlement, can predict issues and notify you and Dell EMC before they occur. Support cases are created on your behalf when issues are predicted.

Deployment Services

ProDeploy and ProDeploy Plus includes setup of OpenManage Essentials and SupportAssist for newly deployed devices. ProDeploy Plus includes Education Services training credits. We'll set it all up right the first time.

Up to 72% less IT effort to resolve issues – ProSupport Plus with SupportAssist significantly reduces IT effort compared to the Basic Warranty without SupportAssist.*



[Learn more](#) about Dell EMC OpenManage Systems Management Solutions



[Contact](#) a Dell EMC Expert



[View more](#) resources



Twitter:
[@DellEMCServers](#)



Dell EMC

*Based on June 2018 Principled Technologies Report commissioned by Dell EMC, "Save time and IT effort resolving server hardware issues with ProSupport Plus and SupportAssist". Actual results will vary. Full report: <http://facts.pt/olccpk>

© 2018 Dell Inc. or its subsidiaries. All Rights Reserved. Dell, EMC and other trademarks are trademarks of Dell Inc. or its subsidiaries. Other trademarks may be trademarks of their respective owners.