

Technical Review

Next-generation Performance with PowerProtect DD Series Appliances from Dell EMC

Date: January 2020 **Author:** Vinny Choinski, Senior Validation Analyst; and Christophe Bertrand, Senior Analyst

Abstract

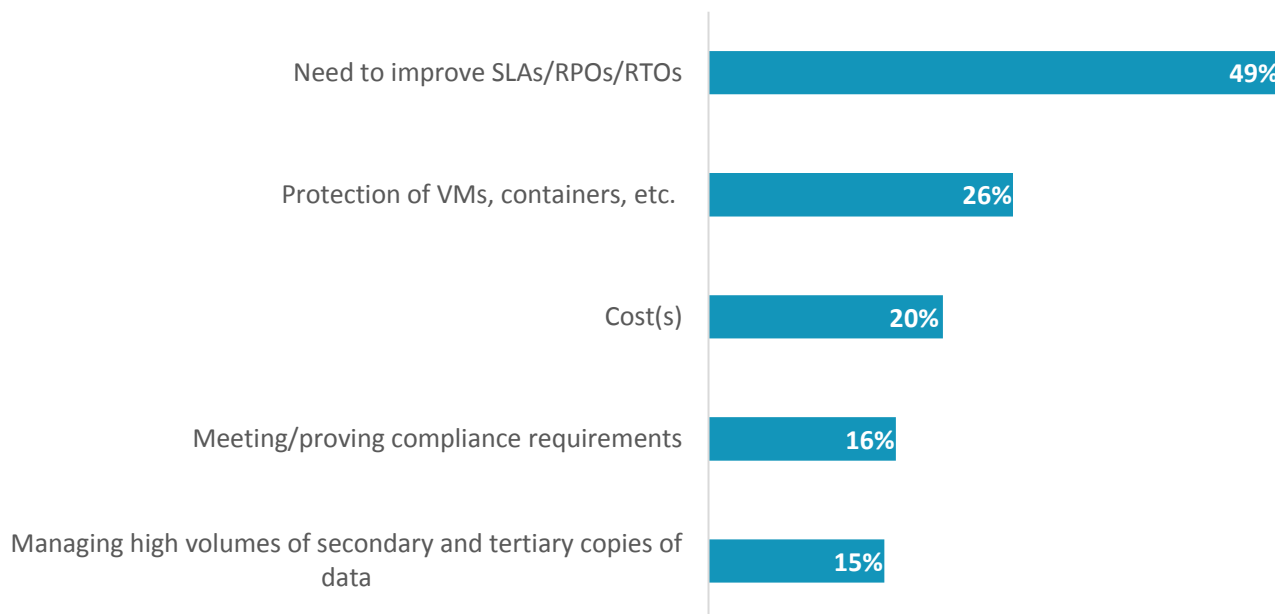
This ESG Technical Review documents hands-on review and auditing of the Dell EMC PowerProtect DD Series Appliances. The goal of the report is to validate that the next generation of the solution delivers improved performance for backup and recovery of business-critical data.

The Challenges

ESG research reveals that 49% of businesses identified improving SLAs and reducing RPOs and RTOs as top challenges when looking at their data protection technologies and processes.¹ Businesses increasingly rely on their IT systems to deliver critical business functions in a 24x7x365 manner. Critical applications that support these functions need to be recoverable quickly and reliably in a variety of different failure scenarios, including component failure, data corruption, ransomware attacks, and the failure of an entire data center. However, today's modern applications are more complex, distributed, and interdependent, making the successful recovery of even a single application challenging. Multiply this by the hundreds of applications that the IT organization must support, and the scope of the problem can seem insurmountable.

Figure 1. Top Five Data Protection Challenges

Which of the following would you characterize as the top challenges with your organization's current data protection processes and technologies?



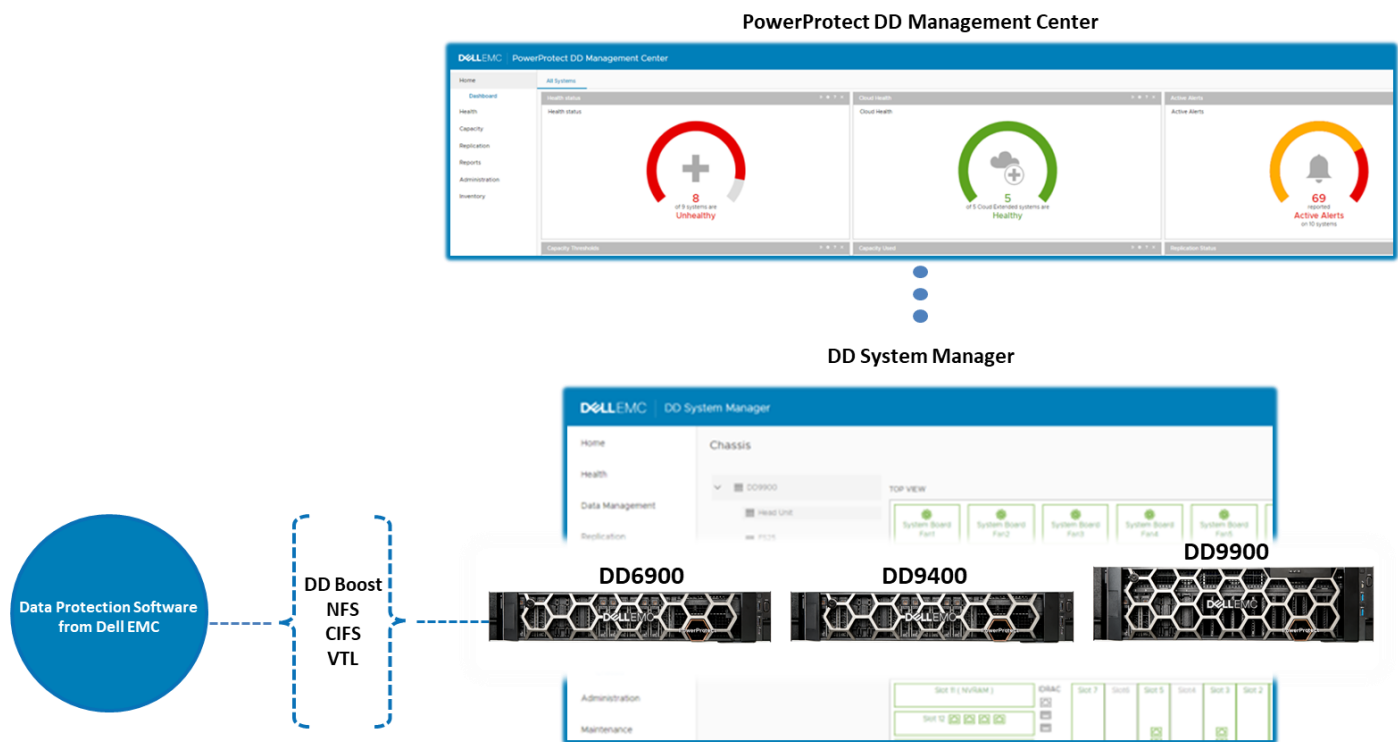
Source: Enterprise Strategy Group

¹ Source: ESG Master Survey Results, [2018 Data Protection Landscape Survey](#), November 2018.

The Solution: Dell EMC PowerProtect DD Series Appliances

Dell EMC PowerProtect DD Series Appliances enable organizations to protect, manage, and recover data at scale across their diverse environments. These appliances are the next generation of Data Domain, specifically architected to protect data on-premises, in the cloud, and in hybrid environments. PowerProtect DD Series Appliances include PowerProtect DD9900, DD9400, DD6900, DD3300, and the software-defined PowerProtect DD Virtual Edition (DDVE). PowerProtect DD can deliver usable capacity of up to 1.25PB in a single rack and improves logical capacity by up to 30% through hardware-assisted compression. This reduces the overall data center footprint and lowers power and cooling costs. Backup performance can reach up to 94TB/hour, and instant access recovery performance can reach up to 60K IOPS. PowerProtect DD also delivers the functionality that existing Data Domain customers have access to today, including replication, data-at-rest encryption, cloud tiering, and cloud disaster recovery. PowerProtect DD provides an enhanced, simple-to-use system management UI for each appliance as well as a global dashboard for managing and monitoring multiple appliances simultaneously.

Figure 2. Dell EMC PowerProtect DD Series Appliances Overview



Source: Enterprise Strategy Group

Key solution features include:

- Improved capacity and performance.
- Expanded network support, including 10GbE, 25GbE, and 100GbE network connectivity.
- Seamless integration and enhanced performance with PowerProtect Software and Data Protection Suite.
- Support of leading enterprise backup and archive applications.
- Software-defined protection storage on-premises and in-cloud with PowerProtect DDVE.
- The enhanced DD System Manager, which provides a complete chassis view.
- Single point of management of all Data Domain Appliances with PowerProtect DD Management Center.

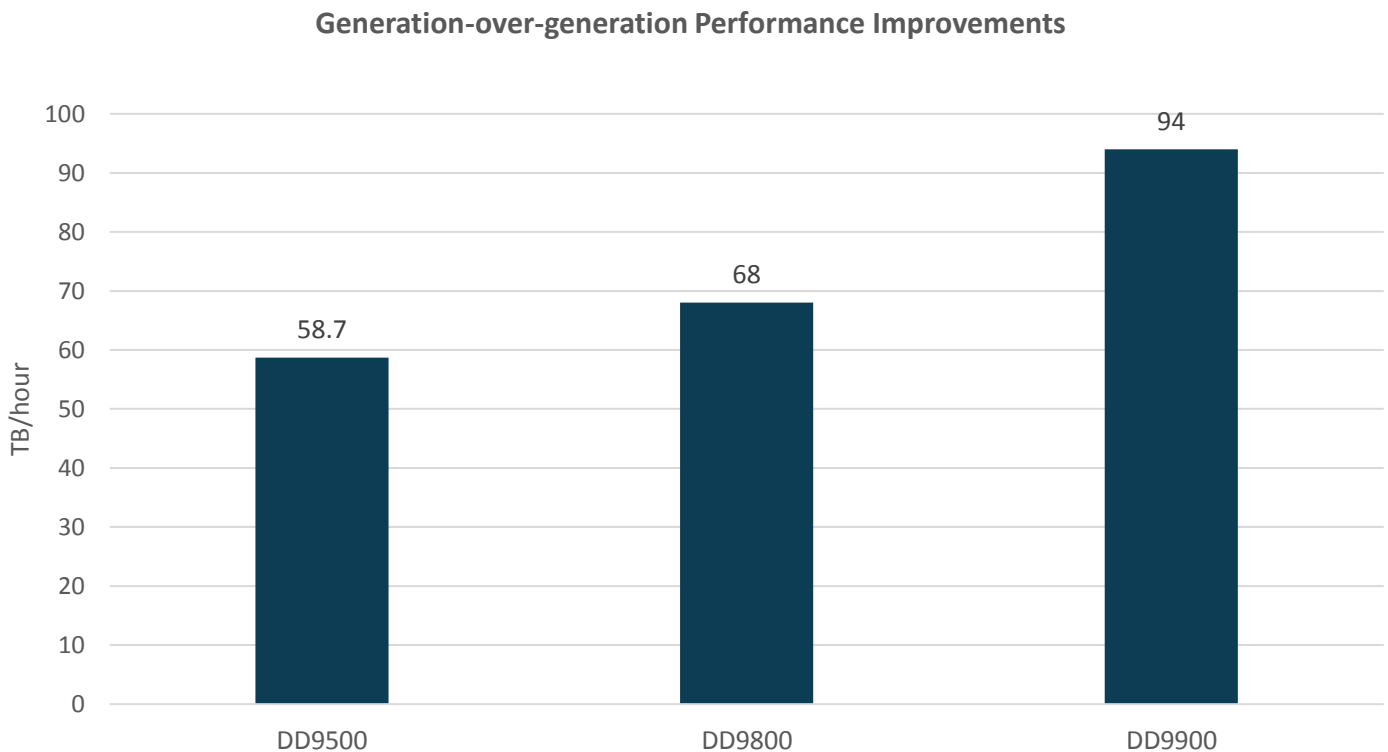
ESG Validated

ESG performed an architecture review and an audit of performance testing results for the PowerProtect DD Series Appliances via joint demo sessions hosted by Dell EMC. We conducted a detailed review of the test harness components, collected and audited the backup results, and ran a sample set of testing to confirm the testing methodology.

Improved Backup Performance

ESG began its review with a high-level exploration of the generation-over-generation backup performance improvements Dell EMC has been able to deliver to its customers with its PowerProtect DD platform. As shown in Figure 3, the generation-over-generation performance improvements for the platform start at 58.7 TB/hr. on the DD9500 Appliance and increase to 94 TB/hr. for the new PowerProtect-technology-based DD9900 Appliance. It should be noted that there is a significant jump in the improved performance percentage achieved between the new PowerProtect DD9900 and the older generation technology DD9500 and DD9800 Appliances.

Figure 3. Performance Throughput History



Source: Enterprise Strategy Group

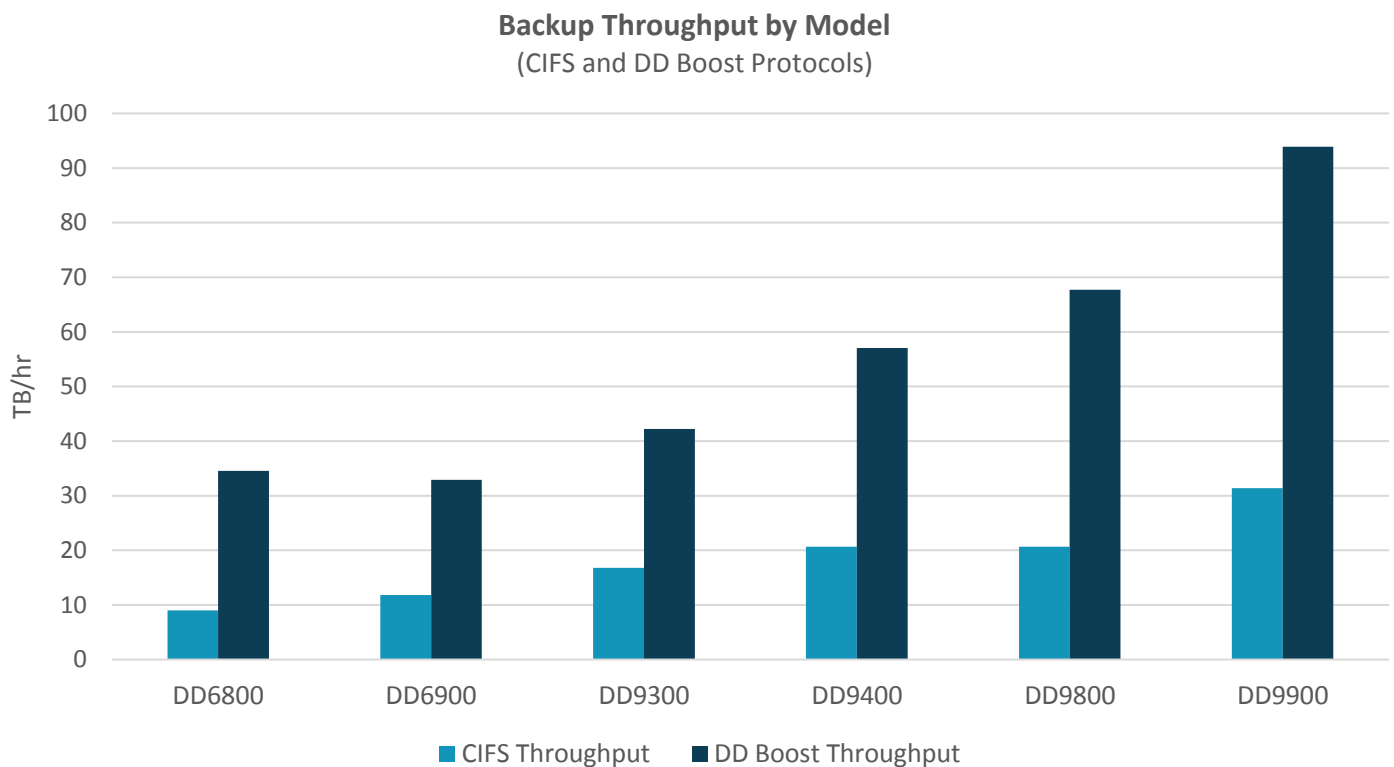
What the Numbers Mean

- The new PowerProtect DD9900 Appliance is able to deliver up to 94TB/hr. of backup performance.
- There was a 15.8% increase in throughput performance between the DD9500 and the DD9800.
- There was a much larger performance throughput increase of 38.2% between the PowerProtect DD9900 and the previous generation DD9800 technology.

Next, ESG conducted a detailed review of the test environment components, configuration, and performance results the test harness produces. There are five major components to the test harness. These components include the web UI, the scheduler, the backup client machines, the PowerProtect DD appliance, and a performance DB machine. The web UI allows testers to provide configuration input to the simulated backup workload and to monitor the test runs. The scheduler executes the simulated workload on the backup clients, collects the stats and logs, and sends the data to the performance DB machine to store. The PowerProtect DD appliance is the target for the data protection data. The web UI allows a tester to configure test parameters of a job, such as type (e.g., full, synthetic, and CBT), protocol (e.g., NFS, DD Boost, and CIFS), target PowerProtect DD, and the number of backup or restore streams. Once the parameters are set, jobs are submitted with different stream counts until the maximum throughput for each workload is reached.

Figure 4 shows the backup throughputs observed and documented during testing by model for the DD Boost and the CIFS protocols. The light blue bar in the figure represents the maximum throughput observed during testing for the CIFS protocols. The dark blue bar represents the maximum throughput achieved using the DD Boost protocol.

Figure 4. Backup Performance Analysis



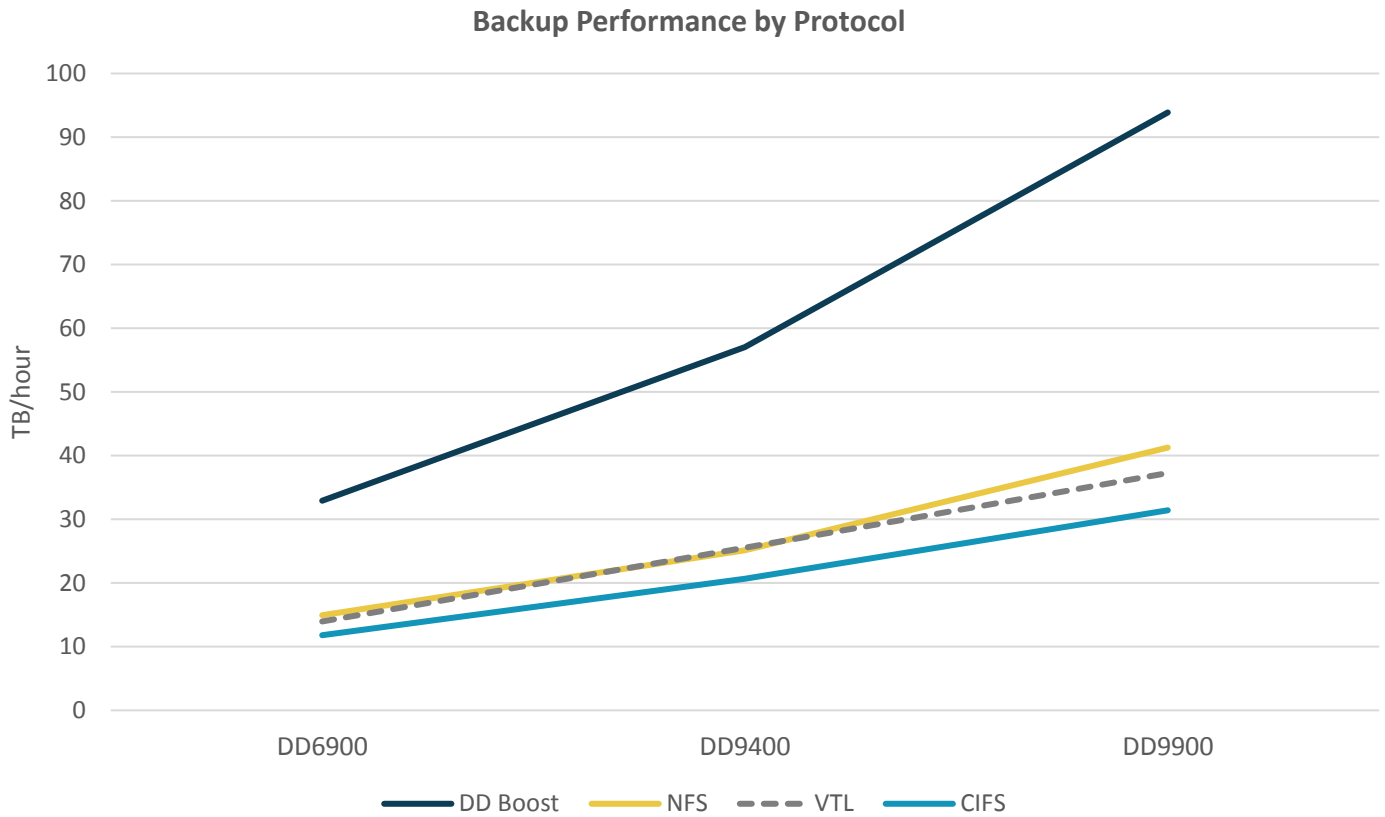
Source: Enterprise Strategy Group

What the Numbers Mean

- The new PowerProtect DD Series Appliances deliver up to 93.88 TB/hr. maximum backup throughput.
- Depending on the model, that's up to 38.7% more backup throughput than the previous generation.
- DD Boost throughputs range from 34.57 TB/hr. to 93.88 TB/hr. depending on the model.
- CIFS throughputs range from 9 TB/hr. to 31.4 TB/hr. depending on the model.

Finally, ESG explored the performance characteristics of the solution by backup protocol. Figure 5 shows a detailed breakout of throughput by protocol for each PowerProtect DD Appliance model tested. It should be noted that due to its efficient and flexible deduplication capabilities, DD Boost delivers a significant performance advantage over the other protocols.

Figure 5. Backup Performance Analysis by Protocol



Source: Enterprise Strategy Group

What the Numbers Mean

- DD Boost produced the highest throughput results because of its ability to do efficient client-side deduplication.
- DD Boost was 127.5% faster than the next fastest protocol, which turned out to be NFS.

i Why This Matters

Why is backup performance so important? Because overrunning a backup window can put unplanned stress on production system resources, thereby decreasing system/business productivity. And, most importantly, missing a backup window altogether can put the ability to recover data at risk. If backup can't keep up, more windows will be missed, and more data will be put at risk.

ESG confirmed that the PowerProtect DD Series Appliances were designed with performance in mind. The series delivers up to 38.7% more backup throughput performance than the previous generation, and it supports the protocols needed to protect modern workloads efficiently.

The Bigger Truth

At a recent event, Michael Dell talked about how our world is being digitally transformed and the promise that data holds to advance humanity. He spoke about the enormous amount of data this transformation is streaming at us from every part of our lives. He said, "In 2007, the entire cellular network in the United States moved 86 petabytes of data. Today, 86 petabytes moves across the cellular network in 18 hours. And ten years from now, 86 petabytes will move in ten minutes. That's a 52,000-times increase in the amount of data."²

That is a lot of data, and unlocking its potential does not always make life easy for the IT professionals that have to manage and protect that data. Managing and protecting your small piece of this global digital transformation can be daunting, and at times it may seem like you are tasked with moving petabytes of data around your organization in minutes.

This is where the new PowerProtect DD Series Appliances come into the picture. Clearly, the series has been designed with modern data workload protection performance top of mind. During our review, ESG confirmed the following performance capabilities and improvements:

- The new PowerProtect DD Series Appliances deliver up to 93.88 TB/hr. of backup throughput.
- Depending on the model, that's up to 38.7% more backup throughput than the previous generation.
- DD Boost produced the highest throughput results because of its ability to do efficient client-side deduplication.
- DD Boost was 127.5% faster than the next fastest protocol tested.

Overall, ESG was impressed with the performance improvements we observed in the PowerProtect DD Series Appliances. Moving forward, we believe integrating ML/AI capabilities that backup applications leverage for intelligent data management and placement will be important in keeping pace with the data transformation evolution.

If you are currently looking to refresh your data protection infrastructure or if you are trying to shrink your backup windows and improve restore capabilities, the PowerProtect DD Series Appliances from Dell EMC should be on your evaluation list.

All trademark names are property of their respective companies. Information contained in this publication has been obtained by sources The Enterprise Strategy Group (ESG) considers to be reliable but is not warranted by ESG. This publication may contain opinions of ESG, which are subject to change. This publication is copyrighted by The Enterprise Strategy Group, Inc. Any reproduction or redistribution of this publication, in whole or in part, whether in hard-copy format, electronically, or otherwise to persons not authorized to receive it, without the express consent of The Enterprise Strategy Group, Inc., is in violation of U.S. copyright law and will be subject to an action for civil damages and, if applicable, criminal prosecution. Should you have any questions, please contact ESG Client Relations at 508.482.0188.

The goal of ESG Validation reports is to educate IT professionals about information technology solutions for companies of all types and sizes. ESG Validation reports are not meant to replace the evaluation process that should be conducted before making purchasing decisions, but rather to provide insight into these emerging technologies. Our objectives are to explore some of the more valuable features and functions of IT solutions, show how they can be used to solve real customer problems, and identify any areas needing improvement. The ESG Validation Team's expert third-party perspective is based on our own hands-on testing as well as on interviews with customers who use these products in production environments.

² Source: Dell Technologies, [The Opportunity Ahead in the Next Data Decade, Michael Dell](#).