



PowerMax Service Levels for Epic Workloads

Ensure consistent application performance

Dell PowerMax and Epic work together to provide guidance in assigning Epic applications to Dell PowerMax servicelevels, ensuring the best performance for Epic workloads while allowing the consolidation of non-Epic workloads on a single PowerMax array.

Service levels in PowerMaxOS ensure applications have consistent and predictable performance. Users can assign storage groups to specific service levels and ensure the highest-priority application response times are not impacted by lower-priority applications. PowerMax service levels are available in PowerMax and VMAX All Flash arrays that have been upgraded to the PowerMaxOS.

The use of PowerMax service levels allows the consolidation of Epic applications and non-Epic applications to a singlearray and a single Storage Resource Pool (SRP). The best practice for provisioning non-Epic applications on a consolidated array is to provision the non-Epic applications to the Platinum service level and below.

PowerMax service levels provide the confidence that Epic Production applications are provided the resources necessaryfor successful consolidation on a single array.

Using the Storage Use, Storage Array, and Pool entries from the Epic Hardware Configuration Guide, the following tables provide guidance in selecting service levels when provisioning Epic workloads on Dell arrays running PowerMaxOS.

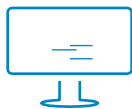
		Storage Use	Server	Service Level
Primary PowerMax/VMAX	Storage Array/Pool 1	Production ODB Data	Production ODB	Diamond
		Production Journal Files	Production ODB	Diamond
		Production Application Files	Production ODB	Diamond
		Project Environment	Production Support ODB	Gold
		Production Support Environment (Clone or Snapshot of Production)	Production Support ODB	Gold
		Release Testing Environment	Production Support ODB	Gold
		Test and Build Environments	Test ODB	Gold
		Training Environments	Training ODB	Diamond
		Web and Service Servers	Physical Hosts for Multipurpose Servers	Platinum
		ODB Servers	Physical Hosts for ODB Servers	Diamond
		Clone or Snapshot for Nightly Backups	NA	Gold

Primary PowerMax/VMAX		Storage Array/Pool 2		
		Storage Use	Server	Service Level
		Reporting Environment Data and Journal Files	Reporting Environment	Diamond
		Reporting Environment-Specific Data	Reporting Environment	Diamond
		Clarity Data	Clarity	Platinum
		Clarity Test Data	Clarity Test	Gold
		Caboodle Data	Caboodle	Platinum
		Caboodle Test Data	Caboodle Test	Gold
		Cube Data	Cube	Platinum
		Cube Test Data	Cube Test	Gold
		Multipurpose SQL Server Data	Multipurpose SQL	Platinum
		Published Application Servers (Optional)	Published Application Servers	Platinum
		Virtual Desktops (Optional)	Physical Hosts for VDI	Platinum
		Cogito Servers	Physical Hosts for Cogito	Platinum
		Clone or Snapshot for Nightly Backups	NA	Gold
Primary PowerMax/VMAX		NAS 1		
		Storage Use	Server	Service Level
		Archive Data	Interconnect	Platinum
		Archive Journal Files	Interconnect	Platinum
		Web BLOB Data	Web BLOB	Platinum
		BusinessObjects Enterprise Data	BOE	Platinum
		Production and Non-Production Service Server Data	Service Servers	Platinum

DR PowerMax/VMAX		Storage Array/Pool 3		
		Storage Use	Server	Service Level
		DR ODB Data	DR ODB	Diamond
		DR Journal Files and Application Files	DR ODB	Diamond
		DR Clarity Data	DR Clarity	Platinum
		DR Caboodle Data	DR Caboodle	Platinum
		DR Cube Data	DR Cube	Platinum
		DR Web and Service Servers	Physical Hosts for Multipurpose Servers	Platinum
		DR Multipurpose SQL Server Data	Multipurpose SQL Server	Platinum
		DR Published Application Servers (Optional)	DR Published Application Server	Platinum
		DR Virtual Desktops (Optional)	Physical Hosts for VDI	Platinum
		DR ODB VM	Physical Hosts for DR ODB	Diamond
		DR Cogito Servers	Physical Hosts for Cogito	Platinum
		DR Clone or Snapshot for Nightly Backups***	NA	Gold
DR PowerMax/VMAX		NAS 2		
		Storage Use	Server	Service Level
		DR Archive Data	Interconnect	Platinum
		DR Archive Journal Files	Interconnect	Platinum
		DR Web BLOB Data	Web BLOB (if DR Activated)	Platinum

For additional assistance

The suggested service-level assignments provide a starting point for consolidating Epic workloads on a PowerMax array. Contact your Dell PowerMax and Epic teams for additional recommendations.



[Learn more](#) about Dell PowerMax Solution



[Contact](#) a Dell Expert



[View more](#) resources



Join the conversation
At #ModernStorage