



Dell PowerSwitch N3200-ON Series Switches

High performance Open networking 1GbE and 10GbE Multigigabit switches for modern campus networks

The N3200 switch series offers power-efficient and resilient 1GbE and 1/2.5/5/10GbE Multigigabit range of switching solution for advanced Layer 3 distribution for offices and campus networks. The series has high-performance capabilities and wire-speed performance utilizing a non-blocking architecture to easily handle unexpected traffic loads. Use dual internal hot-swappable 80PLUS Platinum certified power supplies for high availability and power efficiency. The switches offer simple management and scalability via an 400Gbps (full duplex) high-availability stacking architecture that allows management of up to 12 switches from a single IP address.

Modernize campus network architectures

Modernize campus network architectures with a power-efficient and resilient 1/2.5/5/10GbE switching solution with dense options of 802.3at (30W) or 802.3bt (60W/90W) PoE solutions to deliver clean power to wide range network devices such as wireless access points (APs), Voice-over-IP (VoIP) handsets, video conferencing systems, security cameras, LED luminaires and many more.

Achieve high availability and full bandwidth utilization with Multichassis Link Aggregation (MLAG). N3200 series switches support MLAG to create active/active loop-free redundancy without spanning tree. Server rooms can deliver reliable server and storage connectivity with features to help save time and avoid configuration errors. N3200 supports VRF-lite, allowing it to be partitioned into multiple virtual routers with isolated control and data planes on the same physical switch. For greater interoperability in multivendor networks, N3200 switches offer the latest open-standard protocols.

Leverage familiar tools and practices

All N-Series switches include Dell OS6, designed for easier deployment, greater interoperability and a lower learning curve for network administrators. OS6 common command line interface (CLI) and graphic user interface (GUI) are intuitive, so skilled network administrators can get productive quickly. N3200 switches also support the Open Network Install Environment (ONIE), enabling installation of alternate network operating systems.

Deploy with confidence at any scale

N3200 series switches help create performance assurance with a data rate up to 1560Gbps (full duplex) and a forwarding rate up to 2167Mpps. Scale easily with built-in rear stacking ports. Switch stacks of up to 624 1/2.5/5/10GbE/25GbE ports can be managed from a single screen using the highly available stacking architecture for high-density aggregation with seamless redundant availability. The N-series switches' lifetime warranty covers software upgrades, hardware repair or replacement, and optics and cables purchased with the switch.¹

¹ Select Networking products carry a Lifetime Limited Warranty with Basic Hardware Service (repair or replacement) for life. Repair or replacement does not include troubleshooting, configuration, or other advanced service provided by Dell ProSupport. See details at <https://www.dell.com/en-us/work/shop/networkingwarranty/cp/networkingwarranty>

Hardware, performance and efficiency

- 1GbE Switches: 1RU switches with up to 48 line-rate 1GbE ports of copper or fiber, and four integrated 10GbE SFP+ ports. PoE variants with up to 48 ports of 802.3at (30W) PoE.
- Multigig Switches: 1RU switches with up to 48 line-rate 1G/2.5G/ 5G/10GbE copper ports with four integrated 25GbE SFP28 ports. PoE variants with up to 48 ports of 802.3bt (90W) PoE.
- 400Gbps stacking bandwidth using two 100GbE QSFP28 integrated rear stacking ports.
- Available with dual 80PLUS Platinum certified hot swappable internal power supplies. Optional external power supply to extend PoE budgets on specific models.
- Variable speed fan operation helps decrease cooling and power costs.
- Energy-Efficient Ethernet and lower power PHYs reduce power to inactive ports and idle links, providing energy savings from the power cord to the port.
- Dell Fresh Air compliance for operation in environments up to 113°F (45°C) reduces cooling costs.

Deploying, configuring and managing

- USB auto-configuration rapidly deploys the switch without complex TFTP configurations or sending technical staff to remote offices.
- Management via an intuitive and familiar CLI, embedded web server (GUI), SNMP-based management console application (including Dell OpenManage Network Manager), Telnet or serial connection.
- Private VLAN extensions and Private VLAN Edge support.
- AAA authorization, TACACS+ accounting and RADIUS support for comprehensive secure access support.
- Authentication tiering allows network administrators to tier port authentication methods such as 802.1x, MAC Authentication Bypass and Captive Portal in priority order so that a single port can provide flexible access and security.
- Achieve high availability and full bandwidth utilization with MLAG and support firmware upgrades without taking the network offline.
- Layer 3 Advanced IPv4 and IPv6 functionality including BGP, VRF, BFD, PIM-SM/DM/SSM, IGMP/MLD, RIPv1/v2, OSPFv2/v3
- VXLAN support in hardware only ²
- MACsec support in N3248PXE-ON hardware only ²

² Can be used if enabled by ON partner network operating system.

Product	Description
N3200 series	<p>OS6 Options (with pre-installed OS6 NOS)</p> <ul style="list-style-type: none"> N3208PX-ON IO/PS Airflow, with OS6: 4x RJ45 10M/100M/1G/2.5G/5G 802.3bt (up to 90W) PoE auto-sensing ports, 4x 10M/100M/1000Mb 802.3bt (up to 90W) PoE autosensing ports, 2x 10G SFP+ ports, 1x 320W AC PSU included N3224T-ON IO/PS Airflow, with OS6: 24x RJ45 10/100/1000Mb auto-sensing ports, 4x 10G SFP+ ports, 2X 100G QSFP28 ports, 1x 550W AC PSU included N3224T-ON PS/IO Airflow, with OS6: 24x RJ45 10/100/1000Mb auto-sensing ports, 4x 10G SFP+ ports, 2X 100G QSFP28 ports, 1x 550W AC PSU included N3224F-ON IO/PS Airflow, with OS6: 24x 1G SFP, 4x 10G SFP+ ports, 2X 100G QSFP28 ports, 1x 550W AC PSU included N3224P-ON IO/PS Airflow, with OS6: 24x RJ45 10/100/1000Mb 802.3at (up to 30W) PoE auto-sensing ports, 4x 10G SFP+ ports, 2X 100G QSFP28 ports, 1x 1050W AC PSU included N3224PX-ON IO/PS Airflow, with OS6: 24x RJ45 10M/100M/1G/2.5G/5G/10G 802.3bt (up to 90W) PoE auto-sensing ports, 4x 25G SFP28 ports, 2X 100G QSFP28 ports, 1x 1600W AC PSU included N3248TE-ON IO/PS Airflow, with OS6: 48x RJ45 10/100/1000Mb auto-sensing ports, 4x 10G SFP+ ports, 2X 100G QSFP28 ports, 1x 550W AC PSU included N3248TE-ON PS/IO Airflow, with OS6: 48x RJ45 10/100/1000Mb auto-sensing ports, 4x 10G SFP+ ports, 2X 100G QSFP28 ports, 1x 550W AC PSU included N3248P-ON IO/PS Airflow, with OS6: 48x RJ45 10/100/1000Mb 802.3at (up to 30W) PoE auto-sensing ports; 4x 10G SFP+ ports, 2X 100G QSFP28 ports, 1x 1050W AC PSU included N3248X-ON IO/PS Airflow, with OS6: 48x RJ45 10M/100M/1G/2.5G/5G/10G auto-sensing ports, 4x 25G SFP28 ports, 2X 100G QSFP28 ports, 1x 550W AC PSU included N3248X-ON PS/IO Airflow, with OS6: 48x RJ45 10M/100M/1G/2.5G/5G/10G auto-sensing ports, 4x 25G SFP28 ports, 2X 100G QSFP28 ports, 1x 550W AC PSU included N3248PXE-ON IO/PS Airflow, with OS6: 48x RJ45 10M/100M/1G/2.5G/5G/10G 802.3bt (up to 90W) PoE auto-sensing ports; 4x 25G SFP28 ports, 2X 100G QSFP28 ports, 1x 1600W AC PSU included <p>NO-OS Options (no pre-installed NOS, recommended for use with Enterprise SONiC Distribution by Dell Technologies)</p> <ul style="list-style-type: none"> N3248TE-ON IO/PS Airflow, NO-OS: 48x RJ45 10/100/1000Mb auto-sensing ports, 4x 10G SFP+ ports, 2X 100G QSFP28 ports, 1x 550W AC PSU included ² N3248TE-ON PS/IO Airflow, NO-OS: 48x RJ45 10/100/1000Mb auto-sensing ports, 4x 10G SFP+ ports, 2X 100G QSFP28 ports, 1x 550W AC PSU included ² <p>OS10 Options (with pre-installed OS10 NOS)</p> <ul style="list-style-type: none"> N3248TE-ON IO/PS Airflow, with OS10: 48x RJ45 10/100/1000Mb auto-sensing ports, 4x 10G SFP+ ports, 1x 550W AC PSU included N3248TE-ON PS/IO Airflow, with OS10: 48x RJ45 10/100/1000Mb auto-sensing ports, 4x 10G SFP+ ports, 1x 550W AC PSU included
Power cords	C15 to NEMA 5-15, 1.8M (N3208PX-ON only) C13 to NEMA 5-15, 3M (all other N3200 platforms) C13 to C14, 2M (all other N3200 platforms)
Power shelves (optional)	<ul style="list-style-type: none"> MPS-1S Shelf, External power shelf to hold 1 PSU (any of 1050W AC, 1600W AC, 2000W AC, 1300W DC), Extends PoE budget for N3224PX-ON, N3248P-ON, N3248PXE-ON ³ MPS-3S Shelf, External power shelf to hold up to 3 PSUs (any combination of 1050W AC or 1600W AC or 2000W AC PSUs, or up to three 1300W DC PSUs), Extends PoE budget for N3224PX-ON, N3248P-ON, N3248PXE-ON ³
Power supplies (optional)	<ul style="list-style-type: none"> 320W AC external power adapter, adds redundancy and/or extends PoE budget for N3208PX-ON 550W AC hot swappable with IO/PS airflow, adds redundancy to N3224T-ON, N3224F-ON, N3248TE-ON, N3248X-ON 550W AC hot swappable with PS/IO airflow, adds redundancy to N3224T-ON, N3248TE-ON, N3248X-ON 1050W AC hot swappable, adds redundancy and/or extends PoE budget for N3224P-ON, N3248P-ON. Also used with MPS-1S shelf, MPS-3S Shelf 1600W AC hot swappable, adds redundancy and/or extends PoE budget for N3224PX-ON, N3248PXE-ON. Also used with MPS-1S shelf, MPS-3S Shelf 2000W AC hot swappable, extends PoE budget, used with MPS-1S Shelf, MPS-3S Shelf ³ 550W DC hot swappable with IO/PS airflow, adds redundancy to N3224T-ON, N3224F-ON, N3248TE-ON, N3248X-ON 550W DC hot swappable with PS/IO airflow, adds redundancy to N3224T-ON, N3248TE-ON, N3248X-ON 1300W DC hot swappable, adds redundancy and/or extends PoE budget for N3224P-ON, N3248P-ON, N3224PX-ON, N3248PXE-ON ³
Optics, Cables and Cable Management	Please refer to Dell Networking Transceivers and Cables spec sheet for complete list of optics and cables.
Fans (spare)	Fan module, IO to PSU Airflow Fan module, PSU to IO Airflow (for N3224T-ON, N3248TE-ON, N3248X-ON only)

³ Planned in Roadmap

Hardware specifications

Physical

2 integrated rear 100GbE QSFP28 stacking ports (except N3208PX-ON)
 Out-of-band management port (10/100/1000BASE-T)
 USB (Type A) port for configuration via USB flash drive
 MicroUSB (Type B) console port (MicroUSB to USB connector cable included)
 RJ45 console port with RS232 signaling (RJ-45 to female DB-9 connector cable included)
 Auto-negotiation for speed and flow control
 Auto-MDI/MDIX, port mirroring
 Flow-based port mirroring Broadcast storm control
 Energy-Efficient Ethernet per port settings
 Redundant variable speed fans
 Air flow: I/O to power supply
 Power supply:
 Integrated 320W (N3208PX-ON), 550W (N3224T-ON, N3224F-ON, N3248TE-ON, N3248X-ON), 1050W (N3224P-ON, N3248P-ON), 1600W (N3224PX-ON, N3248PX-ON)
 Dual firmware images on-board
 Switching engine model: Store and forward

Chassis

Size (1RU, H x W x D):
 N3208PX-ON: 1.71 in x 11 in x 12.28 in;
 All other models: 1.71 in x 17.09 in x 15.75 in (power supply/fan tray handle adds add'l 1.18 in)
 Approximate weight (Switch with 1 PSU installed):
 8.44lbs/3.83kg (N3208PX-ON),
 13.75lbs/6.24kg (N3224T-ON),
 14.25lbs/6.46kg (N3224F-ON),
 15.6lbs/7.08kg(N3224P-ON),
 16lbs/7.26kg (N3224PX-ON),
 15.4lbs/6.99kg (N3248TE-ON),
 16.7lbs/7.57kg (N3248P-ON),
 16.1lbs/7.3kg (N3248X-ON),
 17.6lbs/7.98kg (N3248PX-ON)
 2-post rack mounting kit

Environmental

Power supply efficiency: 87% or better in all operating modes
 Max. thermal output (BTU/hr):
 2821 (N3208PX-ON), 686 (N3224T-ON), 764 (N3224F-ON), 3220 (N3224P-ON), 9344 (N3224PX-ON), 723 (N3248TE-ON), 5719 (N3248P-ON), 1637 (N3248X-ON), 18224 (N3248PX-ON)
 Power consumption max (watts):
 900 (N3208PX-ON), 201 (N3224T-ON), 224 (N3224F-ON), 944 (N3224P-ON), 2740 (N3224PX-ON), 212 (N3248TE-ON), 1677 (N3248P-ON), 480 (N3248X-ON), 5344 (N3248PX-ON)
 Operating temperature: 32° to 113°F (0° to 45°C)
 Operating relative humidity: 95%
 Storage temperature: -40° to 158°F (-40° to 70°C)
 Storage relative humidity: 95%

Performance

CPU memory: 4GB
 SSD: 8GB (32GB for N3248TE-ON)
 Packet buffer memory:
 8MB (4MB for N3208PX-ON and 32MB for N3248X-ON and N3248PX-ON)

Switch fabric capacity (full-duplex):
 88Gbps (N3208PX-ON),
 528Gbps (N3224T-ON, N3224F-ON, N3224P-ON),
 576Gbps (N3248TE-ON, N3248P-ON),
 1080Gbps (N3224PX-ON),
 1560Gbps (N3248X-ON, N3248PX-ON)
 Forwarding rate:
 122Mpps (N3208PX-ON),
 733Mpps (N3224T-ON, N3224F-ON, N3224P-ON),
 800Mpps (N3248TE-ON, N3248P-ON),
 1500Mpps (N3224PX-ON),
 2167Mpps (N3248X-ON, N3248PX-ON)
 Line-rate Layer 2 switching: All (non-blocking)
 Line-rate Layer 3 routing: All (non-blocking)

Network Operating System specifications

Software specifications listed below are applicable for OS6. For detailed specifications of NOS, please contact your Dell Technologies representative.

Scaling performance

MAC addresses: 32K
 Link aggregation:
 128 LAG groups, 144 dynamic ports per stack, 8 member ports per LAG
 Priority queues per port: 8
 Static routes: 1,024 (IPv4)/1,024 (IPv6)
 Dynamic routes: 8,158 (IPv4)/4,096 (IPv6)
 OSPF routing interfaces: 8,158
 RIP routing interfaces: 512
 ECMP next hops per route: 16
 ECMP groups: 1024
 VLAN routing interfaces: 128
 VLANs supported: 4,094
 Protocol-based VLANs: Supported
 Multicast forwarding entries:
 1,536 (IPv4), 512 (IPv6)
 ARP entries: 6,144
 NDP entries: 2,560
 Access control lists (ACL): Supported
 MAC and IP-based ACLs: Supported
 Time-controlled ACLs: Supported
 Max number of ACLs: 100
 Max ACL rules system-wide: 3,914
 Max rules per ACL: 1,023
 Max ACL rules per interface (IPv4):
 1,023 (ingress), 511 (egress)
 Max ACL rules per interface (IPv6):
 1,021 (ingress), 509 (egress)
 Max VLAN interfaces with ACLs applied: 24

IEEE compliance

802.1AB LLDP
 Dell Voice VLAN
 Dell ISDP
 802.1D Bridging, Spanning Tree
 802.1p Ethernet Priority (User Provisioning and Mapping)
 Dell Adjustable WRR and Strict Queue Scheduling
 802.1Q VLAN Tagging, Double VLAN Tagging, GVRP
 802.1S Multiple Spanning Tree (MSTP)
 802.1v Protocol-based VLANs
 802.1W Rapid Spanning Tree (RSTP)
 Dell RSTP-Per VLAN
 Dell Spanning tree optional features: STP root guard, BPDU guard, BPDU filtering
 802.1X Network Access Control, Auto VLAN
 802.2 Logical Link Control
 802.3 10BASE-T
 802.3ab Gigabit Ethernet (1000BASE-T)
 802.3ac Frame Extensions for VLANTagging
 802.3ad Link Aggregation with LACP

802.3ae 10 Gigabit Ethernet (10GBASE-X)
 802.3at PoE (N3224P-ON, N3248P-ON, N3208PX-ON, N3224PX-ON, N3248PX-ON)
 802.3bt PoE (N3208PX-ON, N3224PX-ON, N3248PX-ON)
 802.3AX LAG Load Balancing
 Dell Multi-Chassis LAG (MLAG)
 Dell Policy Based Forwarding
 802.3az Energy Efficient Ethernet (EEE)
 802.3u Fast Ethernet (100BASE-TX) on management ports
 802.3x Flow Control
 802.3z Gigabit Ethernet (1000BASE-X)
 802.3bz 1G/2.5G/5G/10G
 ANSI LLDP-MED (TIA-1057)
 Dell EquallLogic iSCSI Auto-configuration
 MTU 9,216 bytes

General Internet protocols

General Internet protocols are supported. For a detailed list, please contact your Dell Technologies representative.

General IPv4 protocols

General IPv4 protocols are supported. For a detailed list, please contact your Dell Technologies representative.

General IPv6 protocols

General IPv6 protocols are supported, including:
 RFC 2460 Internet Protocol, Version 6 (IPv6) Specification
 RFC 2461 Neighbor Discovery for IP Version 6 (IPv6)
 RFC 2462 IPv6 Stateless Address Autoconfiguration
 RFC 2463 Internet Control Message Protocol (ICMPv6) for the Internet Protocol Version 6 (IPv6) Specification
 For a detailed list, please contact your Dell Technologies representative.

Layer 3 functionality

1058 RIPv1
 1724 RIPv2 MIB Extension
 1765 OSPF DB overflow
 1850 OSPF MIB
 2082 RIP-2 MD5 Auth
 2328 OSPFv2
 2338 VRRP
 2370 Opaque
 Dell Policy Based Routing
 2453 RIPv2
 2740 OSPFv3
 2787 VRRP MIB
 3101 NSSA
 3137 OSPF Stub Router Advert
 3623 Graceful Restart
 3768 VRRP
 4271 BGP
 5187 OSPFv3 Graceful Routing Restart

Technical specifications

Multicast					
1112	IGMPv1	1573	Evolution of Interfaces	4113	UDP MIB
2236	IGMPv2	1612	DNS Resolver MIB Extensions	4251	SSHv2 Protocol
2365	Admin scoped IP	1643	Ethernet-like MIB	4252	SSHv2 Authentication
2710	MLDv1	1757	RMON MIB	4253	SSHv2 Transport
2932	IPv4 MIB	1867	HTML/2.0 Forms with file upload extensions	4254	SSHv2 Connection Protocol
2933	IGMP MIB	1901	Community-based SNMPv2	4419	SSHv2 Transport Layer Protocol
3810	MLDv2	1907	SNMPv2 MIB	4521	LDAP Extensions
3973	PIM-DM	1908	Coexistence between SNMPv1/v2	4716	SECSH Public Key File Format
4541	IGMP v1/v2/v3 Snooping and Querier	2011	IP MIB	5246	TLS v1.2
5060	PIM MIB	2012	TCP MIB	6101	SSL
5061	PIM MIB	2013	UDP MIB	6398	IP Router Alert
3376	IGMPv3	2068	HTTP/1.1	Dell	Enterprise MIB supporting routing features
Dell	Static IP Multicast	2096	IP Forwarding Table MIB		draft-ietfhubmib-etherifmib-v3-00.txt (Obsoletes RFC 2665)
Draft-ietf-pim-sm-bsr-05		2233	Interfaces Group using SMIv2		
Draft-ietf-idmr-dvmrp-v3-10 DVMRP		2246	TLS v1		
Draft-ietf-magma-igmp-proxy-06.txt		2271	SNMP Framework MIB		
IGMP/MLD Proxying		2295	Transport Content Negotiation		
Draft-ietf-magma-igmpv3-and-routing-05.txt		2296	Remote Variant Selection		
draft-ietf-idmr-dvmrp-mib-11		2576	Coexistence between SNMPv1/v2/v3		
draft-ietf-magma-mgmd-mib-05		2578	SMIv2		
draft-ietf-pim-bsr-mib-06		2579	Textual Conventions for SMIv2		
IEEE 802.1ag draft 8.1 – Connectivity Fault Management (CFM)		2580	Conformance Statements for SMIv2		
IEEE 802.1p GMRP Dynamic L2 Multicast Registration		2613	RMON MIB		
Quality of service		2618	RADIUS Authentication MIB		
2474	DiffServ Field	2620	RADIUS Accounting MIB		
2475	DiffServ Architecture	2665	Ethernet-like Interfaces MIB		
2597	Assured Fwd PHB	2666	Identification of Ethernet chipsets		
Dell	Port Based QoS Services (TCP/UDP) Mode	2674	Extended Bridge MIB		
Dell	Red/WRED	2737	ENTITY MIB		
Dell	Flow Based QoS Services	2818	HTTP over TLS		
Dell	Audio Video Bridging Mode (IPv4/IPv6)	2819	RMON MIB (groups 1, 2, 3, 9)		
Dell	UDLD	2856	Text Conv. For High Capacity Data Types		
2697	srTCM	2863	Interfaces MIB		
4115	trTCM	2865	RADIUS		
		2866	RADIUS Accounting		
		2868	RADIUS Attributes for Tunnel Prot.		
		2869	RADIUS Extensions		
		3410	Internet Standard Mgmt. Framework		
Network Management and Security		3411	SNMP Management Framework		
Dell	L4 Trusted Mode	3412	Message Processing and Dispatching		
1155	SMIv1	3413	SNMP Applications		
1157	SNMPv1	3414	User-based security model		
1212	Concise MIB Definitions	3415	View-based control model		
1213	MIB-II	3416	SNMPv2		
1215	SNMP Traps	3417	Transport Mappings		
1286	Bridge MIB	3418	SNMP MIB		
1442	SMIv2	3577	RMON MIB		
1451	Manager-to-Manager MIB	3580	802.1X with RADIUS		
1492	TACACS+	3737	Registry of RMON MIB		
1493	Managed objects for Bridges MIB	4086	Randomness Requirements		

Other certifications

N-Series products have the necessary features to support a PCI compliant network topology.

Regulatory, environment and other compliance

Safety and emissions

Australia/New Zealand: ACMA RCA Class A
 Canada: ICES Class A; cUL
 China: CCC Class A; NAL
 Europe: CE Class A
 Japan: VCCI Class A
 USA: FCC Class A; NRTL UL; FDA 21 CFR 1040.10 and 1040.11
 Eurasia Customs Union: EAC Germany: GS mark
 Product meets EMC and safety standards in many countries inclusive of USA, Canada, EU, Japan, China. For more country-specific regulatory information, and approvals, please see your Dell Technologies representative.

RoHS

Product meets RoHS compliance standards in many countries inclusive of USA, EU, China, and India. For more country-specific RoHS compliance information, please see your Dell Technologies representative.
 EU WEEE
 EU Battery Directive
 REACH

Energy

Japan: JEL



⁴ Excludes N3208PX-ON

IT Lifecycle Services for Networking

Experts, insights and ease

Our highly trained experts, with innovative tools and proven processes, help you transform your IT investments into strategic advantages.



Plan & Design

Let us analyze your multivendor environment and deliver a comprehensive report and action plan to build upon the existing network and improve performance.



Deploy & Integrate

Get new wired or wireless network technology installed and configured with ProDeploy. Reduce costs, save time, and get up and running fast.



Educate

Ensure your staff builds the right skills for long-term success. Get certified on Dell Networking technology and learn how to increase performance and optimize infrastructure.



Manage & Support

Gain access to technical experts and quickly resolve multivendor networking challenges with ProSupport. Spend less time resolving network issues and more time innovating.



Optimize

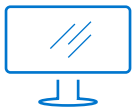
Maximize performance for dynamic IT environments with Dell Optimize. Benefit from in-depth predictive analysis, remote monitoring and a dedicated systems analyst for your network.



Retire

We can help you resell or retire excess hardware while meeting local regulatory guidelines and acting in an environmentally responsible way.

Learn more at DellTechnologies.com/Services



[Learn more](#) about Dell Networking solutions



[Contact](#) a Dell Technologies Expert



[View more](#) resources



Join the conversation with [@DellTech](#)