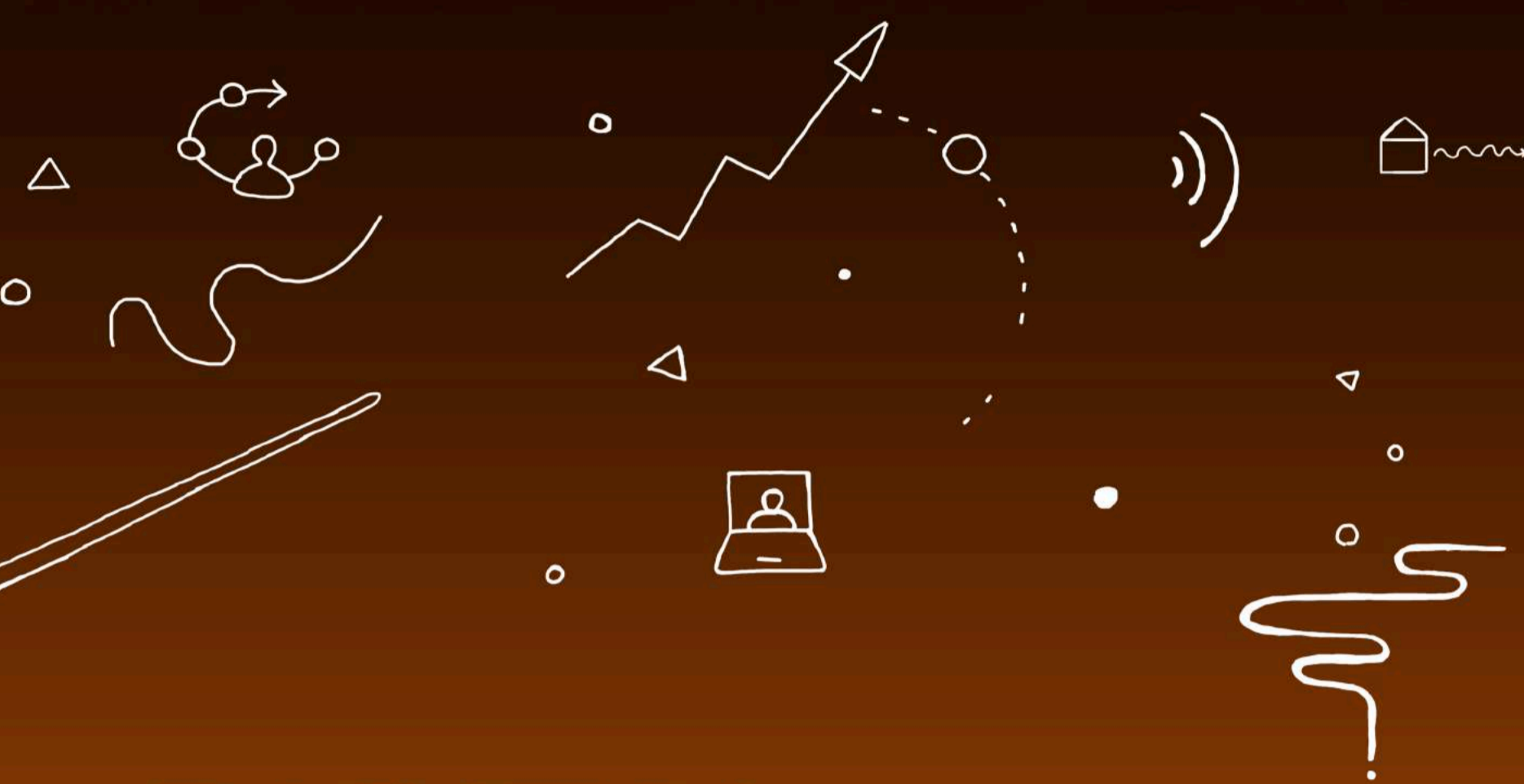


REALIZING 2030

THE HUMAN MACHINE PARTNERSHIP

Our relationship with machines and technology has shaped our modern existence. Now, with 2030 in our sights, we must utilize all that we have created by infusing our greatest assets intuition, emotion, and creativity – fully realizing the potential of the human-machine partnership.



DIGITAL CONDUCTORS

Prediction:

By 2030, coordinating technologies will be integrated with machine learning to serve as digital orchestra conductors, arranging and directing resources to produce desired results with great benefits for humanity.

Example:

Caregivers will use coordinating technologies to support growing elderly populations. From transportation and cleaning to meal preparation and clean up, technology will improve quality of life for those in their golden years.

Implication:

People will become savvy digital conductors, relying on their suite of personal technologies, including voice-enabled connected devices, wearables and implantables to drive positive outcomes.

WORK CHASING PEOPLE

Prediction:

In 2030, work will be broken down into specific tasks and employers will use reputation engines, data visualization, and analytics to find the best candidates. Also, personal biases and stereotypes in the job seeking process will rightfully decline.

Example:

The Circular Board has worked with Dell to create Alice – a software platform that uses AI-related tools, and soon virtual experiences, to connect female entrepreneurs with the resources they really need to excel.

Implication:

Full time jobs will become more flexible as more individuals enter the 'gig economy.' Hiring through immersive technologies could help open doors for people who have not had equal opportunities to demonstrate their abilities.



IN-THE-MOMENT LEARNING

Prediction:

Much of the learning in 2030 will take place on the job through emerging technologies. Education won't stop at a certain age or level of mastery, but rather it will be a continuous undertaking.

Example:

DAQRI is using state-of-the-art AR devices to display information and work instructions over a worker's environment enabling them to complete a task safely and efficiently.

Implication:

Schools will shift from teaching what to learn, to teaching how to learn, arming the next generation with skills that complement machines and technologies that they will be working with and learning from in 2030 and beyond.

