



# Dell Hybrid Client

World's first client computing software with hybrid cloud management enabling seamless access to applications and data whether they are in the cloud, in the data center or locally in a ready to deploy commercial solution<sup>1</sup>

Learn more at [Dell.com/DellHybridClient](https://Dell.com/DellHybridClient)



# A Modern Client Solution

Dell Hybrid Client enables the most flexible client computing experience in a hybrid environment with private and public clouds and local resources to help boost user productivity.<sup>2</sup>

## **Dell Hybrid Client Gives You Choice And Consistency**

Ensure simplicity, choice and flexibility for your organization and your workforce. Designed for anytime, anywhere access, Dell Hybrid Client provides security, accessibility and consistency to every part of the workday.

Dell Hybrid Client combines cloud-based management with a personalized user experience and the business agility and security benefits IT managers expect. Whether working in the office or remotely, all cloud resources are within reach with Dell Hybrid Client.

## **Empowered Cloud Workforce**

Log in, work and search across resources with ease. Dell Hybrid Client brings together the user's apps and data for a productive workday no matter if they reside on public or private clouds.

Accessing files is easy, they automatically open in the application delivery mode defined by IT - cloud, VDI or local - to ensure availability, enhanced security and assist in cloud transition

By enabling the "follow me" feature, Dell Hybrid Client delivers a consistent, personalized user experience across fixed or mobile devices controlled from the cloud.

# Dell Hybrid Client

A centrally managed software solution designed to deliver a fluid workflow when accessing applications and data delivered from private, public, and/or hybrid clouds.

## Instant access

With the convenient and secure single-sign-on<sup>3</sup>, your workforce gets immediate access to necessary apps and data, whether they're hosted locally, in the public or private cloud.

## Ready on day one

All features are available out of the box with intelligent, low-touch deployment from the cloud through Wyse Management Suite Pro.

## Multiple platform options

Works with leading cloud providers, popular VDI solutions and cloud storage services to easily integrate into your existing VDI and cloud environments and quickly adapt as your strategy evolves.

## Safe at every touchpoint

Experience enhanced browser security through upgraded system lockdown with more granularity in security profiles centrally managed.

## Simplified workflow

Access seamlessly an array of VDI solutions, IT-approved web apps and storage locations. And with the global file search, everything is easily found, and the workflow never interrupted.

## A consistent experience

By enabling the follow-me feature, end users get a consistent, personalized experience no matter which fixed or mobile device they log in from.

## Multiple ways to deliver apps

Supports multiple operating modes: cloud, VDI or local or a combination of all to keep your users productive and ease the path to change.

## Multiple form factors

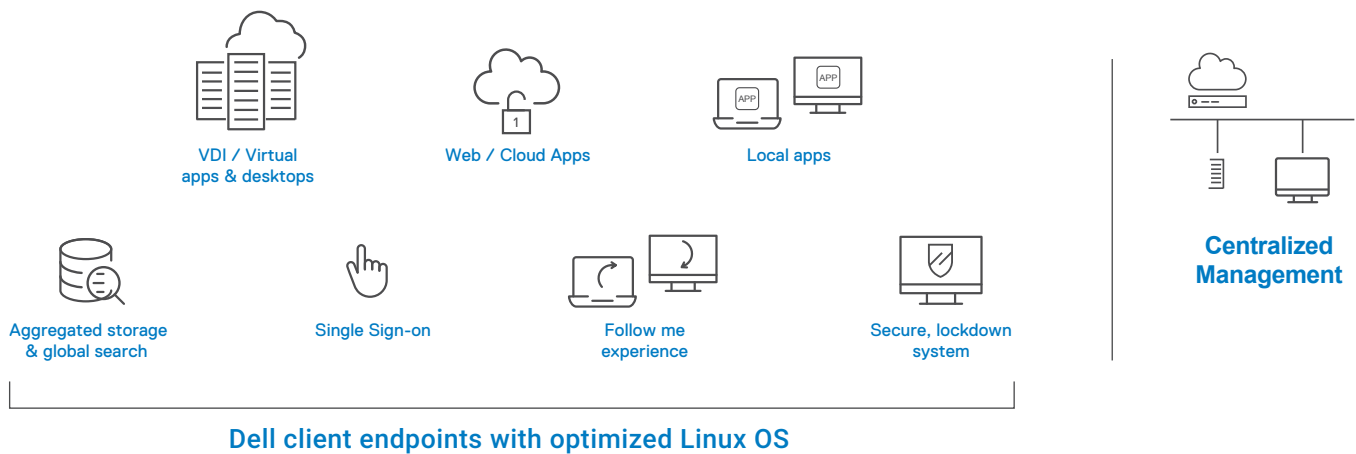
More flexibility to work from anywhere and the choice to work with a broad selection of devices, from laptops and desktops to all-in-ones and workstations.



▶ [Click here to access the interactive demo](#)

# Dell Hybrid Client

Instant Access. Simplified Workflows. A Consistent Experience

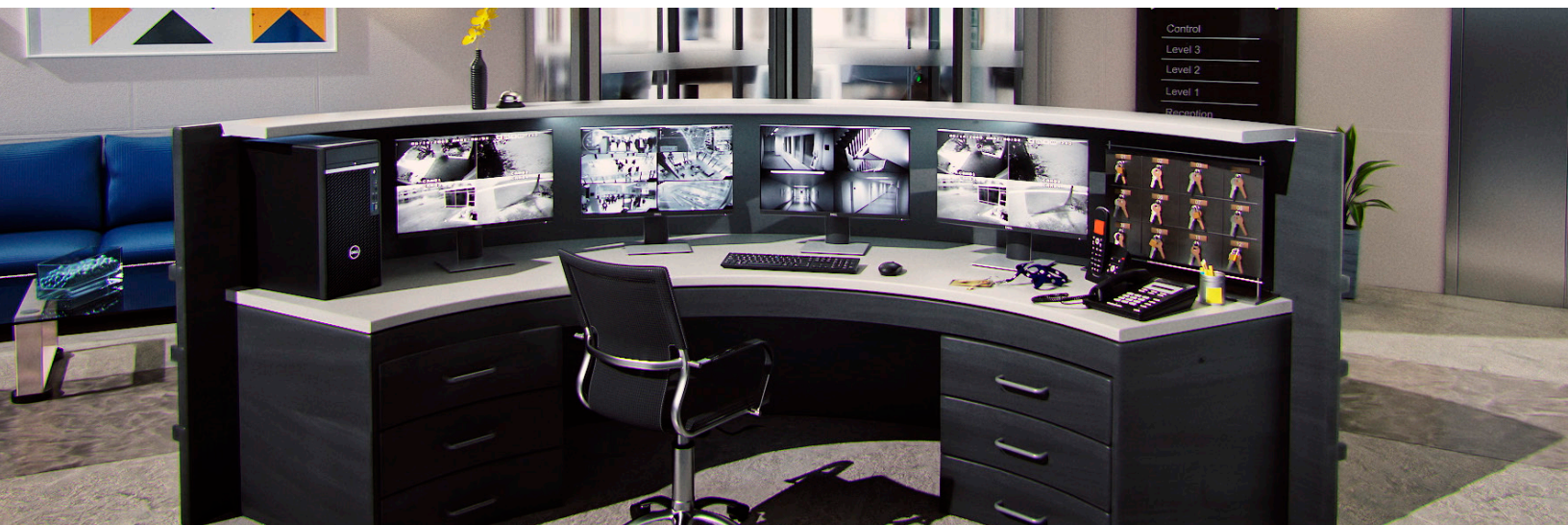


## Safe At Every Touchpoint

Protect user and company data through a secure, locked-down experience where all the data on your device is encrypted<sup>19</sup> and user's access is controlled through specific permissions and security profiles from Wyse Management Suite Pro.

Ensure device compliance with local system security and application sandboxing preventing unwanted interactions and system corruption.

Ensure that apps and content can only be accessed in authorized ways through single sign on, multi-factor authentication<sup>4</sup> and file affiliation.



# Dell Hybrid Client

Endpoint selection from Dell's award-winning portfolio



**OptiPlex 3000 Thin Client**

The OptiPlex 3000 Thin Client delivers a quiet, durable computing experience and makes it easier for you to multi-task.

[▶ view 360° product demo](#)



**Latitude 3440 And Latitude 5440**

Work from anywhere with secure business laptops sustainably designed for productivity on the go.

[▶ view 360° product demo](#)



**OptiPlex All-In-One**

A 24" all-in one desktop with smart collaboration features, up to the latest Intel® Core™ i5. Crystal-clear images and video come through on 24" Full HD Touch and Non-Touch panels.

[▶ view 360° product demo](#)



**Precision 3260 Compact Workstation**

Workstation-class performance packed into in an ultra small form factor with support for up to 6 displays.<sup>17</sup>

[▶ view 360° product demo](#)

# Dell Hybrid Client

Choose from a broad selection of devices, from laptops and desktops to all-in-ones and workstations available to configure with Dell Hybrid Client, Customer Install option<sup>15</sup>



## Latitude Laptops

Work wherever and however you need with small, light and stylish laptops designed for mobility and productivity. Stay connected with industry's fastest wireless options, intelligent collaboration and privacy features, and a broad array of port and accessories to set up office anywhere.



## OptiPlex Desktop Computers And All-In-One PCs

The next generation of OptiPlex features smarter and faster desktops with proven reliability from the brand with 29 years of customer-led innovation. OptiPlex desktop and all-in-one computers now featuring versatile, space-saving form factors and up to 12<sup>th</sup> Generation Intel® processors to unleash your full potential.



## Precision Fixed And Mobile Workstations

Dell Precision delivers versatile designs, intelligent performance and mission critical reliability to conquer the industry's most demanding applications. From award-winning filmmakers and animators to state-of-the-art architects and engineers our expansive professional portfolio enables you to customize the workstation and optimize them for your creative expertise.

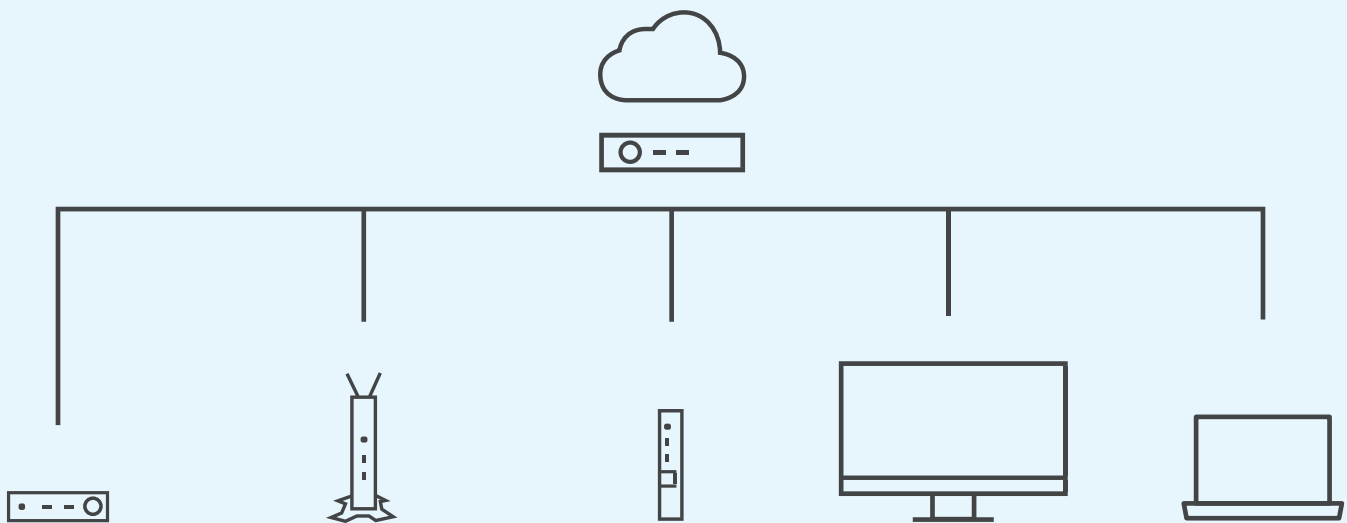
## Our most sustainable PC portfolio<sup>16</sup>

We look for every opportunity to embed sustainable practices across our portfolio. From the materials in our products and packaging to the strength and integrity of our supply chain, Dell Technologies designs our devices with the entire lifecycle in mind.

Learn more at [DellTechnologies.com/sustainable-devices](https://www.delltechnologies.com/sustainable-devices)

# Dell Hybrid Client

A Complete Solution



## Wyse Management Suite

One tool does it all. Wyse Management Suite is a flexible cloud management solution that allows to centrally configure, monitor, manage and optimize endpoints powered by Dell Hybrid Client, anytime, anywhere. Wyse Management Suite is ideal for businesses small, large and in-between scaling from one to hundreds of thousands of devices. Our solution meets all levels of deployment.

Intelligent unified management. Manage all your modern clients powered by Dell Hybrid Client from the cloud and/the datacenter with this hybrid cloud management solution with floating license allocation for greater control and agility. The cloud-first, multitenant model supports your growing business requirements. Automated processes and intelligent insights with powerful dynamic device-grouping and rules-based automation deliver a flexible and proactive management approach.

User friendly, right from the start. From zero to productivity instantly with Wyse Management Suite Pro on public cloud.<sup>6</sup> Manage from anywhere and view critical alerts, notifications on the dashboard and send real time commands with one tap with the mobile app for real-time endpoint modern management of Dell endpoints and software. In addition, the management console is localized in 7 different languages making it convenient for our international teams to deploy it in their regional languages.

## Dell Prosupport For Software

Let us make hardware and software support easy, Dell Hybrid Client comes with Dell ProSupport<sup>7</sup> for Software. ProSupport offers 24x7 access to in-region advanced technology experts who contact IT when critical issues arise, so you can focus on the strategic work that moves your business ahead.

FEATURE	TECHNICAL SPECIFICATION	FEATURE	TECHNICAL SPECIFICATION
<b>SUPPORTED CLIENT OS</b>	Based on Canonical Ubuntu 22.04 LTS 64-bit Support for Canonical Ubuntu 20.04 LTS 64-bit with the existing devices.	<b>FILE EXPLORER</b>	Dell Hybrid Client delivers a seamless user experience for accessing local, USB, network and cloud files and folders through the File Explorer
<b>SUBSCRIPTION OPTIONS</b>	1-year subscription to Dell Hybrid Client with Wyse Management Suite Pro and ProSupport for Software  3-year subscription to Dell Hybrid Client with Wyse Management Suite Pro and ProSupport for Software  5-year subscription to Dell Hybrid Client with Wyse Management Suite Pro and ProSupport for Software	<b>GUEST USER</b>	Guest user login allows a user to login to the device with a temporary guest user profile. In this profile, users will be able to access limited Dell Hybrid Client functionalities. All changes made in this session would be lost on user logout. Guest User account is supported with group level policy configuration from Wyse Management Suite.
<b>CLIENT DEVICE OPTIONS (FACTORY INSTALLED)</b> <sup>8,9,10,11,12</sup>	OptiPlex 3000 Thin Client OptiPlex All-in-One <sup>8</sup> Latitude 3440 <sup>9</sup> Latitude 5440 <sup>8</sup> Precision 3260 Compact workstation	<b>LOCAL USER</b>	Local user supported. Local user must be configured from WMS, WMS administrator can assign admin rights to specific local user from WMS. (Max 8 Local Users)
<b>CLIENT DEVICE OPTIONS CUSTOMER INSTALLED</b> <sup>8,9,10,11,12,15</sup>	Latitude 3340 Latitude 3440 Latitude 3540 Latitude 5440 Latitude 5540 OptiPlex All-in-One OptiPlex Micro Form Factor OptiPlex Small Form Factor OptiPlex Tower Precision 3260 Compact Workstation Precision 5860 Tower Workstation Precision 7690 Tower Workstation Precision 3480 Mobile Workstation Precision 3581 Mobile Workstation Precision 3581 Mobile Workstation Precision 7680 Mobile Workstation Precision 7690 Mobile Workstation Precision 7780 Mobile Workstation	<b>SUPPORTED COLLABORATION TOOLS</b>	Local application: - Zoom client for Linux (included in the base image) - Tested support for Microsoft Teams client for Linux (available from Microsoft.com) UC optimization for VDI: - Microsoft Teams VDI Optimization (for Citrix and VMware) - Zoom Cloud Meetings VDI Optimization (for Citrix and VMware) - Cisco Jabber optimization (download the VDI client for Ubuntu thin client x64 from Cisco.com) - Cisco Webex Teams optimization - Cisco Webex Meetings optimization (download Webex App VDI plugin for Ubuntu 64-bit from Cisco.com) <sup>18</sup>
<b>CONVERSION SOFTWARE</b>	Easily convert a supported Windows, Ubuntu Linux or ThinOS client device to run Dell Hybrid Client. Please refer to the conversion guide available on <a href="https://www.dell.com/support/home/en-us/product-support/product/dell-hybrid-client/docs">https://www.dell.com/support/home/en-us/product-support/product/dell-hybrid-client/docs</a>	<b>FILE AFFILIATION</b>	Manage, prioritize (cloud, VDI or local) and restrict access to productivity applications using Wyse Management Suite. Automatic sync of files across different workspaces (local, VDI or cloud)
<b>UNIFIED MANAGEMENT</b>	On-premises and cloud management deployment— or a combination of both with floating license allocation between on-premise and cloud with Wyse Management Suite Pro version 4.1. Centralized deployment, configuration and management of user parameters, devices, operating system, apps and storage.	<b>USER POLICY GROUPS</b>	Allows IT administrators to apply configuration policies to a group of users based on user's Active Directory (AD) group or organizational unit (OU).
<b>SUPPORTED CLOUD PROVIDERS</b>	Google Cloud Platform™ service Microsoft Azure with Azure Active Directory sync with On Prem Active Directory (HAAD)	<b>ENHANCED FOLLOW-ME</b>	With the enhanced Follow-me experience, user-specific settings and configurations for local browser, browser cache, desktop state (VDI, cloud, and local apps), specific device settings, and favorite bar personalization are preserved in a central repository, and the same settings are enabled in any other entitled device when logged in with the same user credentials
<b>SUPPORTED CLOUD STORAGE PROVIDERS</b>	Box, Google Drive and Microsoft OneDrive	<b>DEVICE SETTINGS</b>	Enhance Device Settings UI to configure different system settings such as peripherals, network, VPN, regional & language configurations and power settings. Restricted access to Advanced settings with password check enables trouble shooting functions and authenticated admin configurations.
<b>SUPPORTED VDI BROKERS</b>	Citrix Virtual Apps and Desktops™ (formerly XenDesktop/XenApp) Microsoft® Azure Virtual Desktop (formerly WVD) Microsoft® Windows Terminal Server VMware Horizon® HP Anyware (formerly Teradici CAS) <sup>18</sup>	<b>LOCAL APPS</b>	LibreOffice office suite: Writer (word processing), Calc (spreadsheets), Impress (presentations), Draw (vector graphics and flowcharts), Base (databases), and Math (formula editing). VLC media player Image viewer
<b>LOCAL BROWSER</b>	Firefox v110 Google Chrome v110	<b>QUICK START WIZARD</b>	Quick Start Wizard provides a smooth on-boarding experience to users. The wizard enables users to easily customize Language/Keyboard, Network and register to Wyse Management Suite.



FEATURE	TECHNICAL SPECIFICATION	FEATURE	TECHNICAL SPECIFICATION
<b>MULTI MONITOR SUPPORT<sup>14</sup></b>	<ul style="list-style-type: none"> <li>- Up to 3 displays with the OptiPlex 3000 Thin Client</li> <li>- Up to 4 displays with the OptiPlex Micro</li> <li>- Up to 6 displays with the Precision 3260 Compact Workstation<sup>17</sup></li> </ul>	<b>USB LOCKDOWN SETTINGS</b>	Granular control of USB ports and type of USB devices. Administrators can centrally enable/disable USB ports and define exceptions such as HID devices using Wyse Management Suite.
<b>CONNECTIONS</b>	OpenConnect VPN supporting GlobalProtect and Cisco Anyconnect VNC Viewer for remote shadowing (download from <a href="http://www.dell.com/support">www.dell.com/support</a> ) SSH Server (download from <a href="http://www.dell.com/support">www.dell.com/support</a> )	<b>SECURE BROWSING</b>	Provides a secure end point for your browser-based work environment: allowlist and blocklist, site isolation/multi containers are enabled by default, as an additional security layer to prevent attacks to succeed
<b>SINGLE APPLICATION MODE</b>	Provides IT Admin with more granularity in configuration options to define what application and connections are automatically launched	<b>ACCOUNT PRIVILEGES</b>	Provides WMS Admin the ability to restrict access control over the DHC desktop and UI components. Privilege levels are: Default, None, Customize, High
<b>ON DESKTOP</b>	Allows IT to control visibility of VDI session and application icons for better user experience and more flexibility.	<b>USER SECURITY</b>	High level of user security in which the data of a user is encrypted and cannot be viewed by other users. User's access to Dell Hybrid Client is controlled through specific permissions and security profiles that are managed using Wyse Management Suite. Using open box mode which permits full use of the Linux OS on the device under WMS.
<b>BUILT IN VDI BROKER CLIENTS</b>	<p><b>VMware Horizon client version 2303</b></p> <ul style="list-style-type: none"> <li>- Blast Extreme, PCoIP and RDP protocol support</li> <li>- Microsoft Teams</li> <li>- Zoom optimization pack</li> <li>- File type association</li> <li>- Virtual printing on physical RDS host machine</li> <li>- Multi session mode</li> <li>- Logging copy and paste</li> </ul> <p><b>Citrix Workspace app 2305</b></p> <ul style="list-style-type: none"> <li>- File type association</li> <li>- Single Sign On support (only from device login to remote session with Citrix StoreFront)</li> <li>- Smartcard Login</li> <li>- Browser Content Redirection</li> <li>- USB Redirection</li> <li>- HDX MediaStream</li> <li>- HDX RealTime Webcam Video Compression</li> <li>- Skype for Business / Citrix HDX RTME 2.9</li> <li>- Microsoft Teams optimization</li> <li>- Zoom optimization</li> <li>- Cisco Jabber Optimization</li> <li>- Cisco Webex Meetings optimization</li> <li>- Multistream ICA</li> <li>- HTML5 video redirection</li> </ul> <p><b>Wyse RDP 8.1.08</b></p> <ul style="list-style-type: none"> <li>- File type association</li> <li>- Single Sign on support (only from device login to remote session)</li> <li>- GPU accelerated rendering</li> <li>- Dual 4K display support<sup>14</sup></li> <li>- Multi-stream (simultaneous UDP and TCP connections)</li> <li>- H.264 default video compression</li> <li>- H.264 rendering</li> </ul> <p><b>Azure Virtual Desktop client 2.5-0518</b></p> <p><b>PCoIP client version 22.0918</b></p>	<b>SECURITY</b>	<ul style="list-style-type: none"> <li>- Ability to set system network proxy settings</li> <li>- Enhanced Security Profile – Ability to configure Firewall for 3rd party applications, Firewall configurations and Kernel/OS hardening based on security level configuration from Wyse Management Suite</li> <li>- Randomized GRUB password and enforcement of password change from WMS</li> <li>- Secure Boot</li> <li>- Single Sign-On (SSO) into Enterprise AD (Kerberos-based authentication)</li> <li>- Single Sign-On (SSO) into GCP and Azure.</li> <li>- Smart card (Gemalto, YubiKey PIV) / CAC card support for local login and AD login</li> <li>- Smart card (Gemalto, YubiKey PIV) / CAC card support from login to Citrix VDI session</li> <li>- Smart card (Gemalto, YubiKey PIV) /CAC card support for browser-based Azure login to cloud applications.</li> <li>- Smart card (Gemalto, YubiKey PIV) /CAC card support for VMware VDI session</li> <li>- ActivClient (Middleware)                             <ul style="list-style-type: none"> <li>. G&amp;D SmartC@fe Expert 3.2</li> <li>. G&amp;D SmartC@fe Expert 7.0</li> <li>. G&amp;D SmartC@fe Expert 7.0 (Alt Token)</li> <li>. Gemalto TOPDLGX4</li> <li>. Gemalto DLGX4 (BETA 2)</li> <li>. IDEMIA Cosmo V8</li> <li>. Oberthur Cosmo V8 (Alt Token)</li> </ul> </li> <li>- 90meter (Middleware)                             <ul style="list-style-type: none"> <li>. G&amp;D SmartC@fe Expert 3.2</li> </ul> </li> <li>- Imprivata Support (7.8.1)<sup>18</sup></li> <li>- Trusted Platform Module 2.0</li> <li>- User authentication with Active Directory, both local AD and Azure AD with On Prem users sync using AAD connect</li> <li>- User authentication with Google Workspace application with Local AD sync using GCDS connect</li> <li>- User File Encryption (zFS)</li> <li>- Full Disk Encryption protects user and company data by using strong encryption algorithms to encrypt the device's local drives (available with the OptiPlex 3000 Thin Client and Ubuntu Linux 22.04)<sup>19</sup></li> </ul>
<b>KEYBOARD SUPPORT</b>	Tested support for Bloomberg keyboard 4 (Startboard) with Citrix, VMware and Teradici VDI sessions.	<b>SUPPORTED LANGUAGES</b>	Local user interface: English, French, German, Italian, Spanish, Japanese, Korean, Chinese (Traditional and Simplified), Russian (Russian Federation), Portuguese-Brazil, Hebrew, Danish, Finnish, Norwegian, Swedish
<b>POWER OPTIMIZATION</b>	Power optimization configuration from Wyse Management Suite via power profile settings (balanced, energy efficient, max performance) available on select models only	<b>FREE TRIAL SOFTWARE</b>	Get a 45-day trial software at <a href="http://www.wysemanagementsuite.com">www.wysemanagementsuite.com</a>

# Recommended Accessories



**Dell 24 Monitor – P2422H**

Stay productive no matter where you work with this sleek 23.5" FHD monitor with ComfortView Plus.



**Dell Pro Wireless Keyboard and Mouse – KM5221W**

Get productive with a quiet, full-size keyboard and mouse combo with programmable shortcuts and 36 months battery life.



**Dell Pro Stereo Headset – WH3022**

Exceptional audio clarity with this Teams certified wired headset with a customized fit.



**Dell Dock - WD19S**

Boost your PC's power with this powerful and modular USB-C dock with a future-ready design.



**Dell USB-C Mobile Adapter - DA310**

Compact and portable 7-in-1 USB-C mobile adapter provides superb video, data connectivity and up to 90W power pass-through to your PC.



**Dell Notebook Power Bank Plus - PW7018LC**

With fast high-power delivery of up to 65Wh, this power bank can charge the widest range of USB-C laptops, and mobile devices.

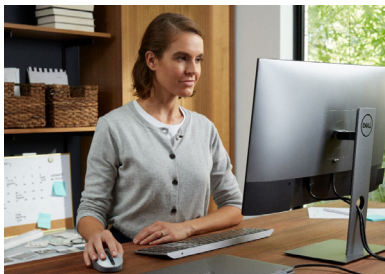


**Dell Pro Slim Briefcase 15 – P01520CS**

Keep your laptop, tablet and other essentials securely protected within the eco-friendly Dell Pro Slim Briefcase 15, a slim-fit briefcase designed for work and beyond.

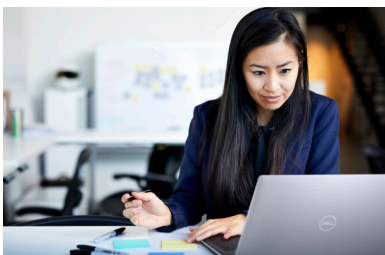
# Dell Hybrid Client

Modern clients powered with Dell Hybrid Client designed for the way people work



#### Performance-oriented remote worker accessing a rich mix of local, cloud-based and virtualized apps

- Purpose built to support the next generation of cloud applications with local offloading of collaboration tools
- Built-in VDI protocols to connect to a remote workstation and perform graphic-intensive work
- Workstation-class performance packed into in an ultra small form factor with the Precision 3260 Compact Workstation



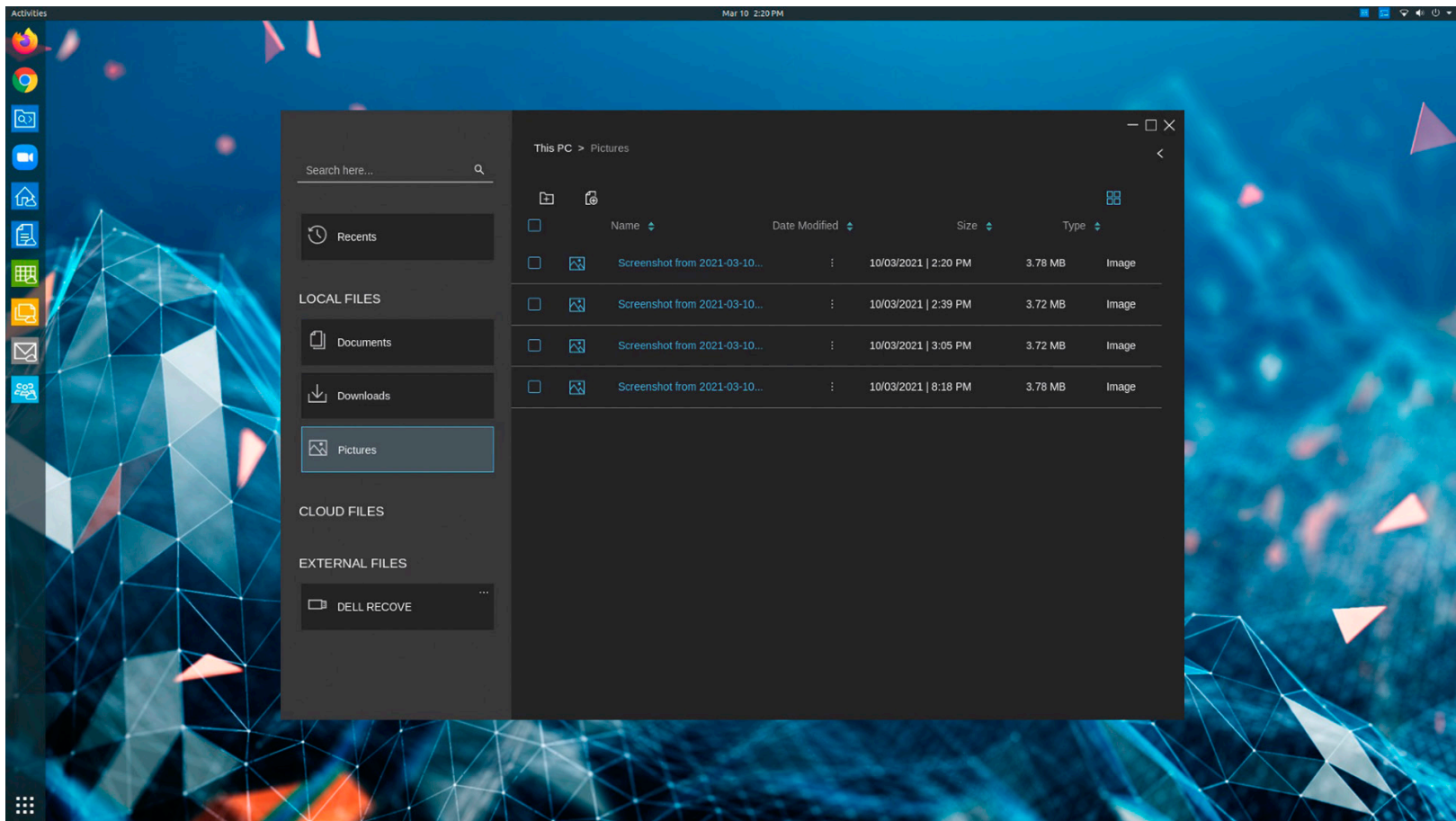
#### Knowledge worker accessing cloud-based resources

- Out of the box support for cloud-based productivity applications
- Single-sign-on across VDI and cloud resources
- Select the Latitude-based solution for remote work or a flexible space saving solution with OptiPlex All-in-One to streamline office and home office space
- Centralized management of the user's devices and application orchestration from the cloud



#### Task worker accessing VDI applications and transitioning to cloud resources

- The OptiPlex 3000 Thin Client is a highly managed, cost-effective client device
- Full-featured local browser with security parameters centrally managed (restrict/allow URLs, restrict plugins, etc...)
- Out of the box access to cloud-based productivity apps and support for local Linux apps reducing the strain on VDI back-end resources
- Built-in support for VDI brokers from leading vendors (Citrix, VMware and Microsoft)
- Easy to adopt, leveraging local Active Directory or sync on-premises Azure AD
- Multi-factor authentication<sup>4</sup>



File Explorer in Dell Hybrid Client delivers a seamless user experience for accessing local, USB, shared network and cloud files and folders

## Ensure simplicity, choice and consistency for your organization and workforce with Dell Hybrid Client.

Dell exclusive cloud-managed client software solution designed for anytime, anywhere access.

### Learn more at [DellTechnologies.com/DellHybridClient](https://www.dell.com/DellHybridClient)

1. Based on Dell analysis of Dell Hybrid Client software preinstalled on select Dell commercial clients with Wyse Management Suite Pro Dell Hybrid Client license v. comparative solutions, July 2020. For more details, visit [www.DellTechnologies.com/DellHybridClient](https://www.DellTechnologies.com/DellHybridClient). Legal AD #G20000253
2. Based on Dell analysis of Dell Hybrid Client software (version 1.5 or above) preinstalled on select Dell commercial clients with Wyse Management Suite Pro v. comparative solutions, Jan 2021. For more details, visit [www.DellTechnologies.com/DellHybridClient](https://www.DellTechnologies.com/DellHybridClient)
3. Single sign-on to VMware Horizon not supported in Dell Hybrid Client 1.5. Single sign-on supported with Kerberos only.
4. Multi Factor Authentication - Smartcard only, for initial system login and Citrix and Azure cloud apps
5. Based on Dell analysis of competitive products, September 2020. OptiPlex Ultra supports Dell and 3rd party VESA compatible displays up to 40", sold separately.
6. License activation required.
7. Dell Services: Availability and terms of Dell Services vary by region. For more information, visit [www.dell.com/servicesdescriptions](https://www.dell.com/servicesdescriptions).
8. Offering may vary by region. Some items may be available after product introduction. For complete details, refer to the Technical Guidebook published on [www.dell.com](https://www.dell.com).
9. Not all features and services are available in all countries or sales segments/customers. Contact your Dell Technologies Services Representative for availability.
10. A 64-bit operating system is required to support 4GB or more of system memory.
11. GB means 1 billion bytes and TB equals 1 trillion bytes; significant system memory may be used to support graphics, depending on system memory size and other factors.
12. GB means 1 billion bytes and TB equals 1 trillion bytes; actual capacity varies with preloaded material and operating environment and will be less.
13. Refer to the administrator guide for the detail steps to install Dell Hybrid Client on the supported OptiPlex / Latitude device. The Dell Hybrid Client software is preloaded with Dell Client Agent- Enabler (DCAE) installed
14. The maximum number of displays and maximum resolution in a session will vary depending on partner broker, protocol, and virtual machine types and configurations
15. Dell Hybrid Client and Wyse Management Suite licenses are sold separately. Requires the device to be configured with 8 GB Memory – 128 GB or higher capacity SSD/HDD and Ubuntu Linux 20.04 and Dell Client Agent Enabler (DCA-Enabler). Refer to the Dell Hybrid Client Administrator's Guide on [dell.com/support](https://dell.com/support) for more details on the supported platforms and configurations
16. Based on the design, manufacture, packaging, product lifecycle maintenance and number of ecolabel registrations, including EPEAT Gold registrations for the Dell Precision, Latitude and OptiPlex portfolio as of April 2021. 17 Support for up to 6 displays requires an optional graphic card. 18 Supported with Canonical Ubuntu 20.04 LTS 64-bit only.
17. Support for up to 6 displays requires an optional graphic card.
18. Supported with Canonical Ubuntu 20.04 LTS 64-bit only and 22.04 LTS 64-bit only.
19. Full Disk Encryption is a factory configuration option available with Ubuntu Linux 22.04 and select OptiPlex, Latitude and Precision client devices. For more details, please refer to the Technical Documentation published on [www.dell.com/support](https://www.dell.com/support) or contact your Dell Technologies Sales Representative.