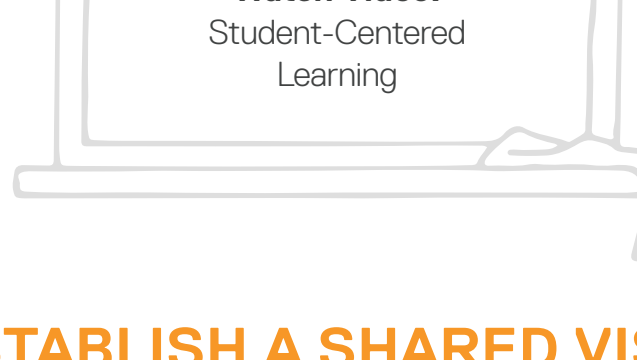


CHECKLIST FOR A SUCCESSFUL STUDENT ACCESS INITIATIVE



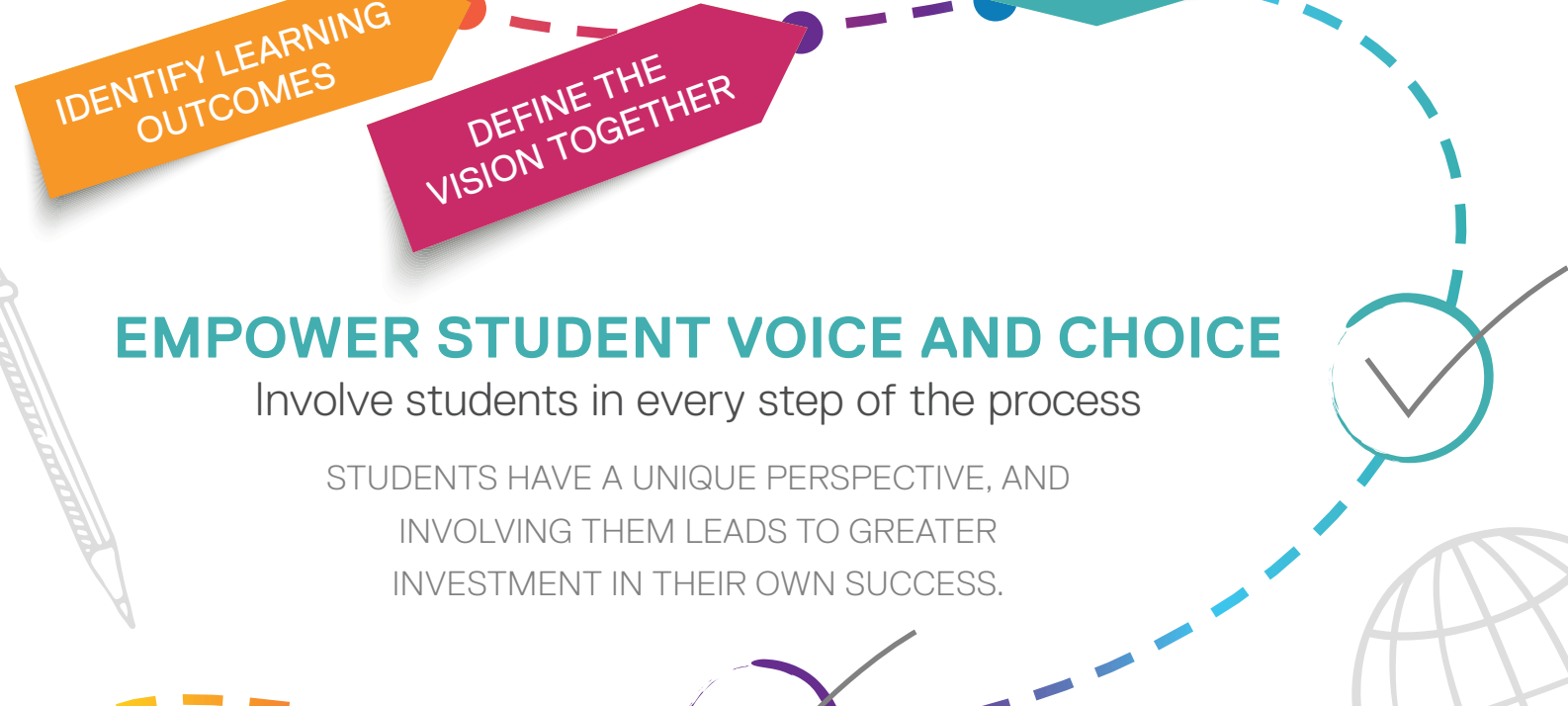
Providing student access is a huge undertaking, but it doesn't need to be a headache. From your first stakeholder meeting to putting devices in student hands, here's what your district needs to know to ensure a smooth integration.



ESTABLISH A SHARED VISION

for learning with community stakeholders

- ADMINISTRATORS, TEACHERS, CURRICULUM DESIGNERS, IT STAFF, SPECIAL EDUCATION TEACHERS, STUDENTS, PARENTS, COMMUNITY BUSINESS LEADERS



EMPOWER STUDENT VOICE AND CHOICE

Involve students in every step of the process

STUDENTS HAVE A UNIQUE PERSPECTIVE, AND INVOLVING THEM LEADS TO GREATER INVESTMENT IN THEIR OWN SUCCESS.

DEFINE THE LEARNING MODEL

Identify how to put the vision into practice

IDENTIFY REQUIRED KNOWLEDGE, SKILLS, & DISPOSITIONS

EMPOWER STUDENTS & TEACHERS AS CO-DESIGNERS

DEFINE HOW TECHNOLOGY CAN ENHANCE LEARNING

CREATE A COMMON LANGUAGE

Reflecting the vision, core values, and learning models

A COMMON LANGUAGE WILL HELP FACILITATE EFFECTIVE COMMUNICATION, AND IT WILL ESTABLISH A SHARED FRAMEWORK TO DEFINE AND ASSESS EFFECTIVE LEARNING WITHIN THE MODEL.

INVEST IN A PROFESSIONAL LEARNING FRAMEWORK

Supporting your vision, learning model, and desired outcomes

INVEST BEFORE PUTTING TECHNOLOGY IN THE HANDS OF STUDENTS. UNDERSTAND THE SUPPORT NEEDED AND PERSONALIZE THE LEARNING PLAN. TAKE RISKS AND EXPERIMENT WITH NEW LEARNING STRATEGIES AND TECHNOLOGIES. START WITH A SMALL GROUP OF TEACHERS; EXPAND FROM THERE.

ENSURE DIGITAL LITERACY

Incorporate into the district literacy plan

HELP STUDENTS AND PARENTS UNDERSTAND:

- ✓ HOW TO FIND, EVALUATE, AND USE RELIABLE CONTENT
- ✓ SAFE AND POSITIVE ONLINE BEHAVIOR
- ✓ ONLINE BEHAVIORS HAVE PERMANENCY AND REPERCUSSIONS

DEVELOP DIGITAL LITERACY CURRICULUM

DEFINE DIGITAL CITIZENSHIP CODE OF CONDUCT

JOIN A COMMUNITY

CREATE A DIGITAL CONTENT STRATEGY

Start with the learning model

IDENTIFY THE DIGITAL RESOURCES AND TOOLS THAT WILL BE NEEDED. TAKE INVENTORY OF EXISTING DIGITAL RESOURCES. ADD NEW TOOLS AS NEEDED. VISIT OTHER SCHOOLS TO REVIEW THEIR MODELS.

VISIT OTHER SCHOOLS

UNDERSTAND HOW RESOURCES WILL BE ACCESSED

SELECT DEVICES

Align with student learning outcomes

- ❓ HOW WILL STUDENTS USE THESE DEVICES?
- ❓ WILL DATA BE STORED NATIVELY OR IN THE CLOUD?
- ❓ WHERE AND HOW LONG WILL STUDENT WORK BE STORED?
- ❓ DO THE DEVICES SUIT THE STUDENT LEARNING OBJECTIVES?

INCLUDE STUDENTS IN THE PROCESS

ALIGN DEVICES TO STUDENT NEEDS

REVIEW INFRASTRUCTURE POLICIES

Assess your environment and your policies

MAKE SURE THE INFRASTRUCTURE—THE NETWORK, SECURITY, AND STORAGE—CAN SUSTAIN THE INCREASED DEMAND AND MEETS COMPLIANCE REQUIREMENTS.

KEEP YOUR STUDENTS, DATA, AND NETWORK SECURE

HOW WILL THE DEVICES BE MANAGED AND SUPPORTED?

BUILD A PHASED DEPLOYMENT PROGRAM

From deployment to training to support

PUT TOGETHER A TEAM OF STUDENTS, TEACHERS, INSTRUCTIONAL TECHNOLOGISTS, AND IT ADMINISTRATORS, AND LEAD A TEST RUN WITH THE GOAL OF SCALING UP OVER TIME.

ESTABLISH SUPPORT CENTERS ON EACH CAMPUS

ESTABLISH FEEDBACK LOOPS

ADDITIONAL RESOURCES

District Lessons
Explore six best practices for rolling out your 1:1 program.

Visioning Day
Learn how teaching and learning can better align with students' needs.

Powhatan County Public Schools
Discover how Powhatan County is empowering students with twenty-first-century skills using flexible learning spaces and Dell EMC

Cobb County School District
See how Cobb County and Dell EMC are fostering collaboration and creativity in the classroom.

Learn more: DellEMC.com/k12

Follow us on Twitter: [@DellEMCEdu](https://twitter.com/DellEMCEdu)

