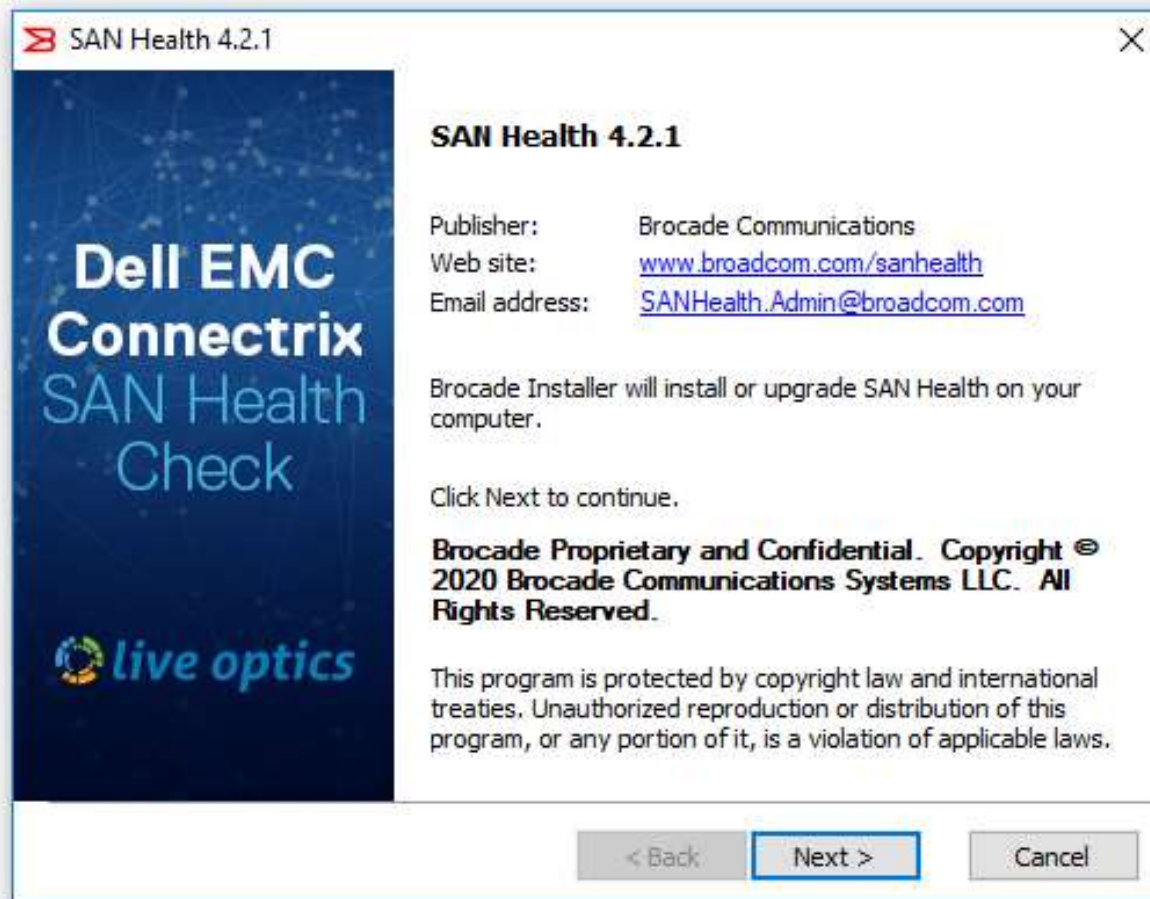
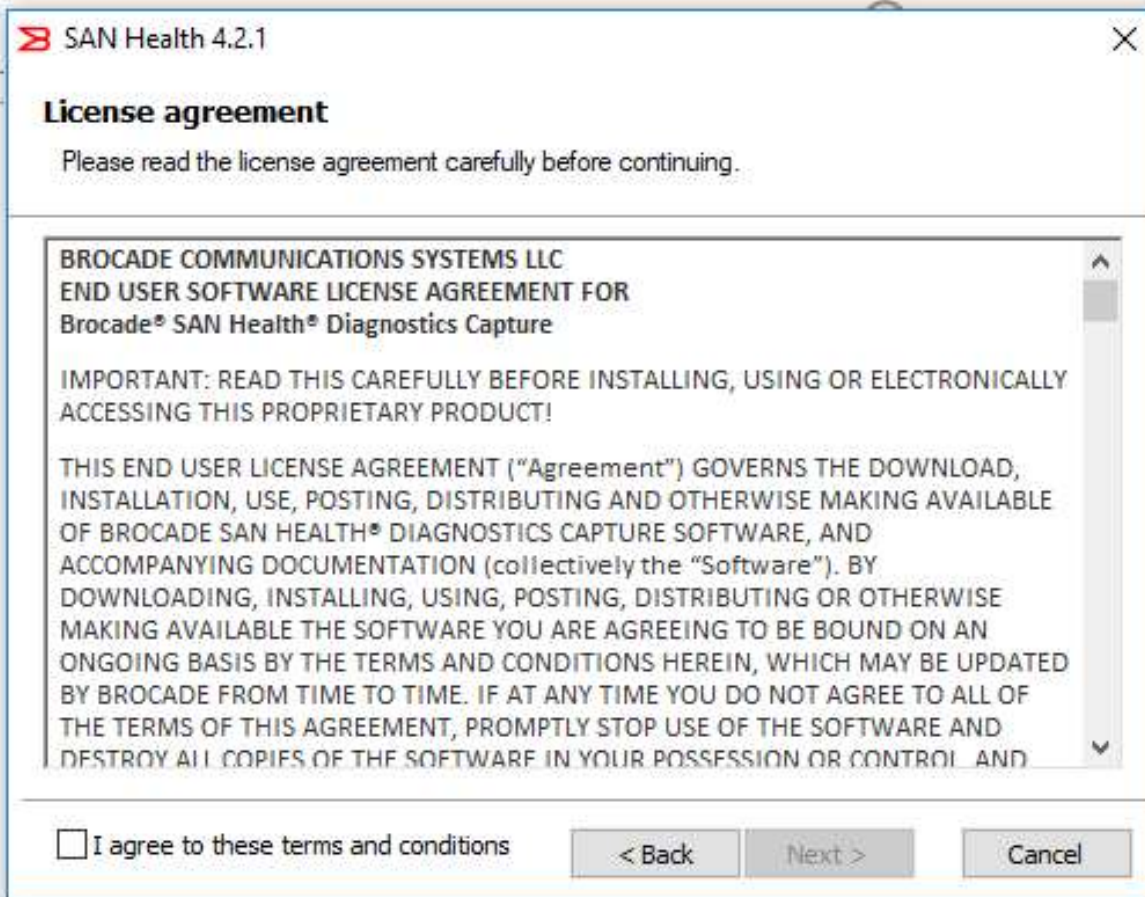



Dell EMC SAN Health

4.2.1a Installation Slides







 SAN Health 4.2.1

✕

Installation options

These options determine how the application will be installed.

Installation folder:

C:\Program Files (x86)\Brocade\SAN Health 4

Browse...

Completed audit and working folder:

C:\SAN Health Audits

Browse...

Required disk space:

9,784 KB

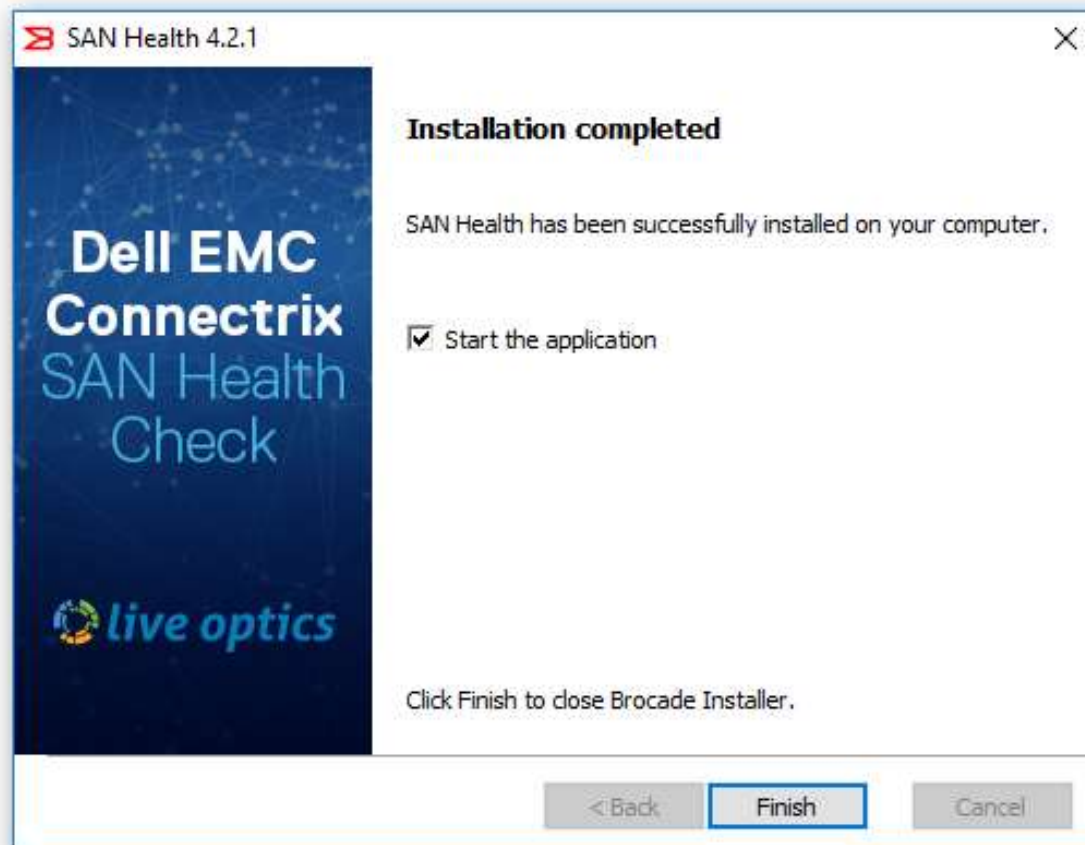
Available disk space:

317,215,148 KB

< Back

Install

Cancel



SAN Health[®]

Dell EMC Connectrix
SAN Health Check



This program captures diagnostic and performance data from SAN switches to aid in the generation of a SAN Health report containing inventory, topology and performance information.

Only commands that retrieve information from the switch are used.

No switch configuration settings are changed.

Select New to create an audit set.

Find help

[Help Videos](#)

www.broadcom.com/san-health-online-help

www.broadcom.com/san-health-community

Upload an audit BSH file via [https](https://sanhealth.broadcom.com/upload)

sanhealth.broadcom.com/upload

Or via email

SANHealth.Upload@broadcom.com

Check for the latest version

www.broadcom.com/sanhealth

Ask a question

SANHealth.Admin@broadcom.com

Brocade Proprietary and Confidential. Copyright © 2020 Brocade Communications Systems LLC. All Rights Reserved.

Version 4.2.1a

DELLEMC