

# Dell EMC SAN Health

Tips and Tricks



# Table of Contents

A quick guide to optimizing SAN Health

<b>Introduction</b>	<b>3</b>
<b>Installing SAN Health</b>	<b>5</b>
<b>Running SAN Health</b>	<b>7</b>
<b>Entering Site Details</b>	<b>8</b>
<b>Entering Fabric Details</b>	<b>9</b>
<b>Running the Audit</b>	<b>11</b>
<b>Generating the Report</b>	<b>14</b>
<b>Setting Audit and Report Options</b>	<b>17</b>
<b>Interpreting the Report</b>	<b>25</b>
<b>Contact Details</b>	<b>35</b>

# Dell EMC SAN Health Assessment Tools

Free customer downloadable tool

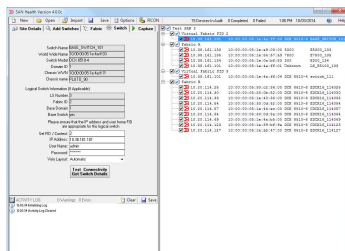


Live Optics uses Dell EMC SAN Health output to create a summary presentation

# Fast, free and easy-to-use SAN auditing software

SAN Health provides useful results

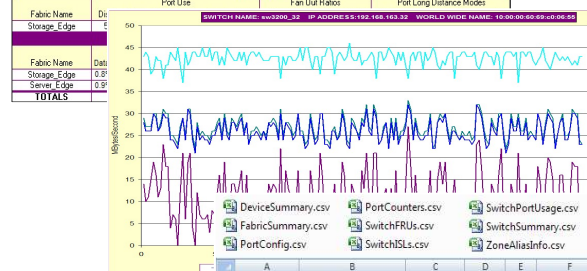
Capture a point in time snapshot of switch logs and diagnostics



Automated report generation

SAN SUMMARY DETAILS FOR SAN_EXAMPLE													Table 1
SWITCHES IN SAN_EXAMPLE													Table 2
Fabric Name	Switch Name	Domain	IP Address	World Wide Name	Model	Speed	OS Ver	Ports	Unused				
Storage_Edge	sw2000-32	32	192.168.163.32	10:00:00:00:00:00:00:00	3200	2G	5.1.1a	0	1				
Storage_Edge	sw4100-41	41	192.168.163.41	10:00:00:00:00:00:00:00	4100	4G	5.1.0a	32	24				
Storage_Edge	sw3050-50	50	192.168.163.50	10:00:00:00:00:00:00:00	3050	2G	5.1.0a	16	10				
Server_Edge	sw3000-30	30	192.168.163.30	10:00:00:00:00:00:00:00	3000	2G	5.1.0a	16	4				
Server_Edge	sw4000-40	40	192.168.163.40	10:00:00:00:00:00:00:00	4000	4G	5.1.0a	48	39				
Server_Edge	sw24000-24	24	192.168.163.24	10:00:00:00:00:00:00:00	24000	2G	5.1.0a	32	21				
Server_Edge	sw3000-30	30	192.168.163.30	10:00:00:00:00:00:00:00	3000	2G	5.1.0a	32	23				
HEALTH AND MONITORING STATUS FOR SAN_EXAMPLE													Table 3
Fabric Name	Switch State	Power Supplies	Fans	Temp Sensors	Errors	SNMP	SysLog						
	Marg	OK	Bad	Marg	OK	Low	High	Lvl1	Lvl2	No	Yes	No	Yes
Storage_Edge	0	3	0	2	0	12	0	12	0	0	0	0	0
Server_Edge	0	2	0	7	0	15	0	17	0	0	0	0	0
TOTALS	4	5	4	0	10	0	34	0	35	0	0	0	0
PORT USE													Table 4
Fabric Name	Port Use	Fan Out Ratios	Port Long Distance Modes										
Storage_Edge	1												
Fabric Name	Port Use	Fan Out Ratios	Port Long Distance Modes										
Storage_Edge	0.0												
Server_Edge	0.0												
TOTALS	0.0												

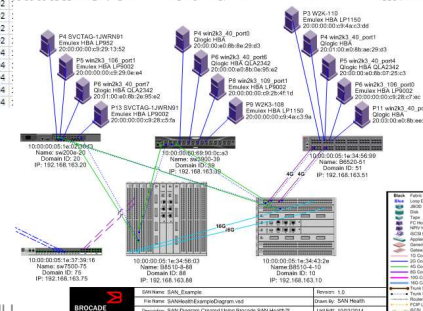
Comprehensive reporting with health and best practice checks



Performance graphs for visualizing activity

	A	B	C	D	E	F	G	H
1	IP Address	Switch WWN	FRU Type	Location	Status	Serial Number	Part Number	Uptime
2	10.18.224.201	10:00:00:05:33:d6:3c:49	Fan	Fan 1	OK			129days
3	10.18.224.201	10:00:00:05:33:d6:3c:49	Power Supply	PS 1	OK			129days
4	10.18.224.201	10:00:00:05:33:d6:3c:49	CHASSIS	Unit 1	OK	CCD2518H010	40-1000737-02	129days
5	10.18.224.202	10:00:00:05:33:aa:e7:e4	Fan	Fan 1	OK			559days
6	10.18.224.202							
7	10.18.224.202							
8	10.18.224.202							
9	10.18.224.202							
10	10.18.224.204							
11	10.18.224.204							
12	10.18.224.204							
13	10.18.224.204							
14	10.18.224.204							

Search, filter and sort the audit data



Useful topology diagrams to view physical layout

DELL EMC

# Installing SAN Health

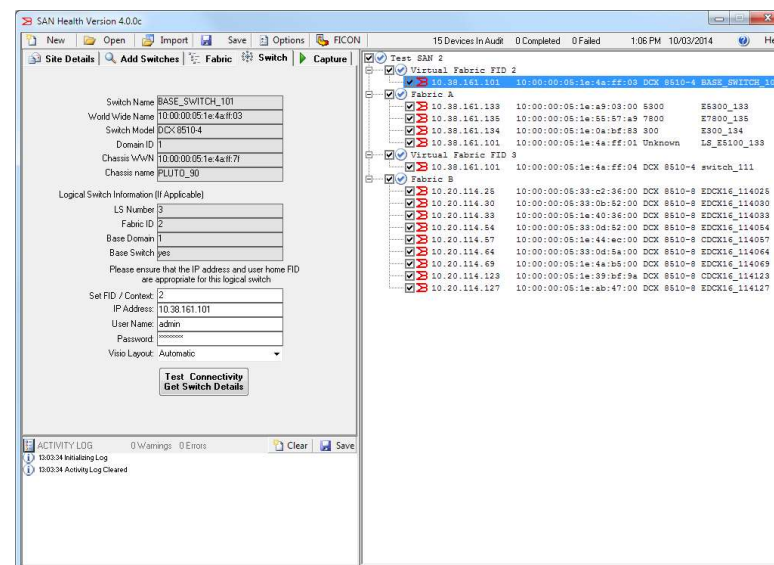
SAN Health installs easily within 3 minutes

- Select a suitable workstation
- Any Windows box that has TCP/IP connectivity to the management port of the SAN switches
- CPU and memory requirements are dictated by the number of switches that will be audited at any one time
- Less than 20 switches requires an Intel P4 or AMD Equivalent (AMD K7) and 512MB of RAM
- The memory requirement then increases in relation to the switches in the audit. 100 switches , the maximum supported requires 4GB of RAM with a fast, modern CPU

# SAN Health Diagnostics Capture

## Client Side Software

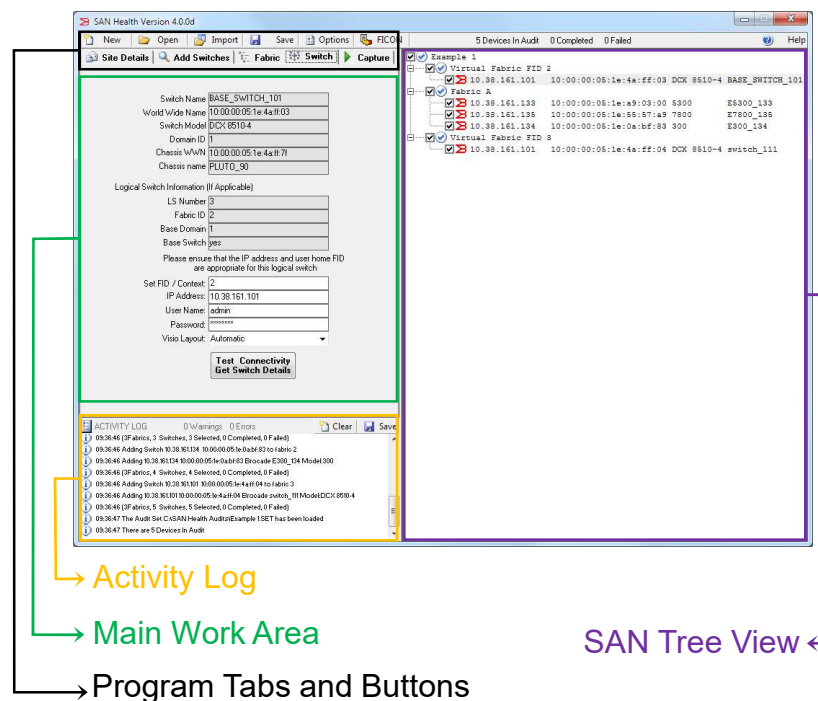
- Quick, easy and intuitive to use
- 5 to 10 minutes to complete an audit
- Connects via telnet/secure shell to the switches and retrieves the output from non-intrusive show commands
- Can run against a single fabric or multiple fabrics at once



# Running SAN Health

Follow this simple process

- Four simple steps:
  1. Enter Site Details
  2. Enter Switch and Fabric Details
  3. Run the Audit
  4. Generate the Report
- Optionally select report content and fine tune audit options

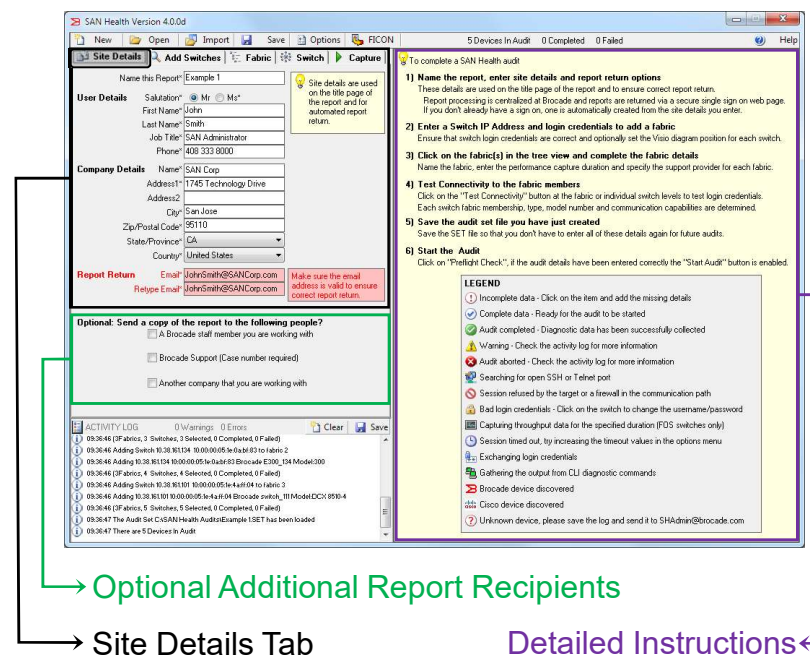




# Running SAN Health

## 1. Enter site and contact Information

- This information is used as the report title and to determine the recipients of the completed report
- It is used to create the secure single sign-on account where the completed report will be posted for download
- Optionally, if you wish to share the report with support or someone that you are working with, enter these details here



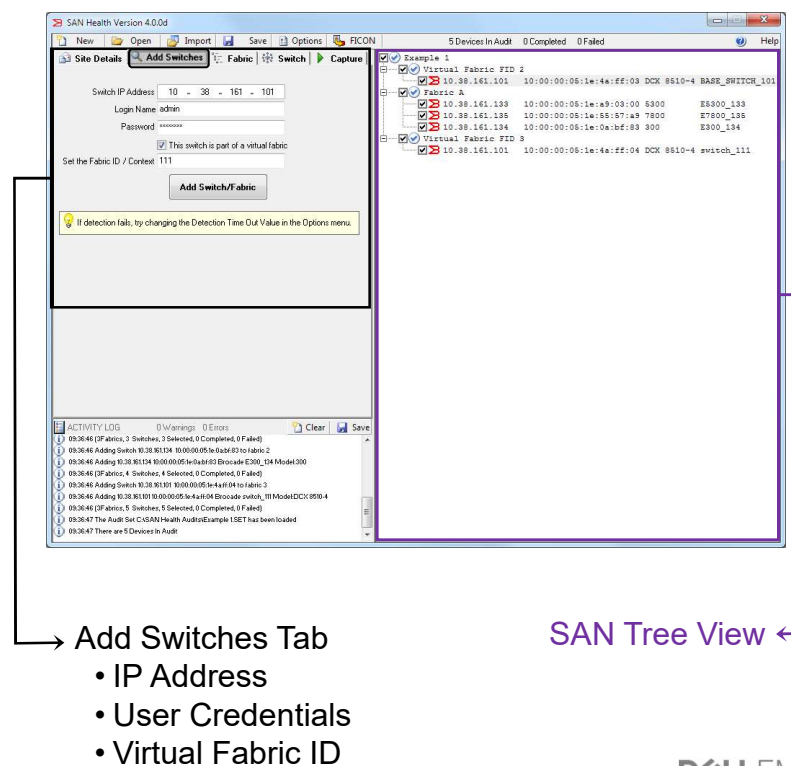


# Running SAN Health

## 2. Enter Switch and Fabric Details – Add Switches Tab

- Add switches by inputting their IP address, a username, and a password
- Additional switches in the fabric will be automatically discovered
- SAN Health is Virtual Fabric aware and Fabric ID/Context can be entered here

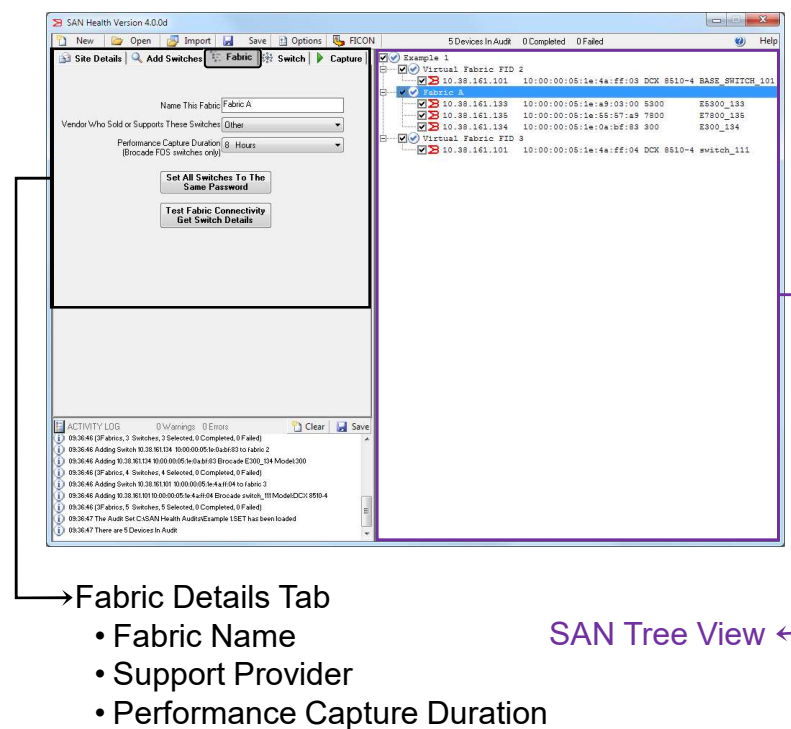
New for 4.0!



# Running SAN Health

## 2. Enter Switch and Fabric Details (cont.) – Fabric Tab

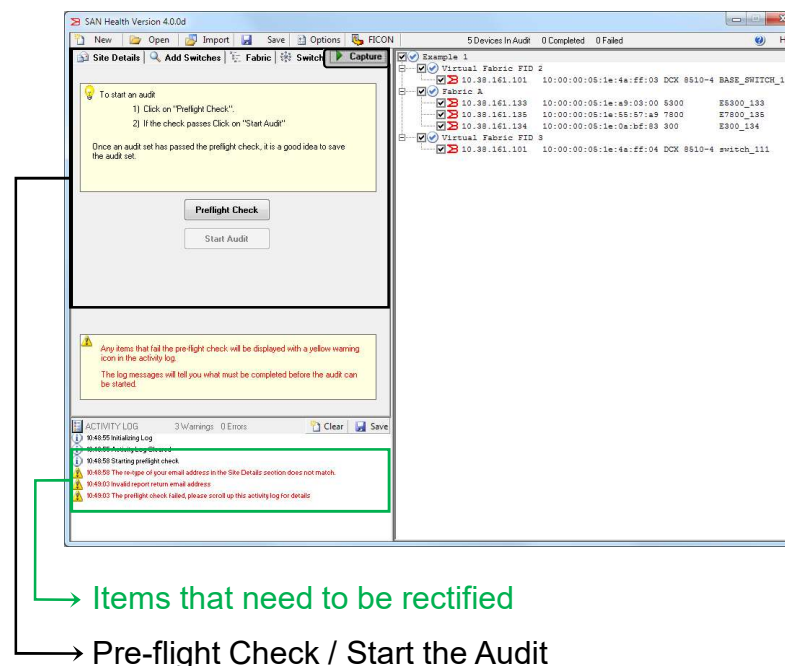
- Add the fabric details
  - Give the fabric a logical name
  - Enter the support provider
  - Select the duration for capturing port throughput statistics (Brocade FOS based switches only)



# Running SAN Health

## 3. Running the Audit – Starting the Audit

- A pre-flight check is conducted before an audit can be started
  - If anything is incomplete or incorrectly formatted, an error will display in the activity log
- Clicking on “Start Audit” launches an individual telnet or SSH session to each switch and the output from diagnostic CLI commands is captured



# Running SAN Health

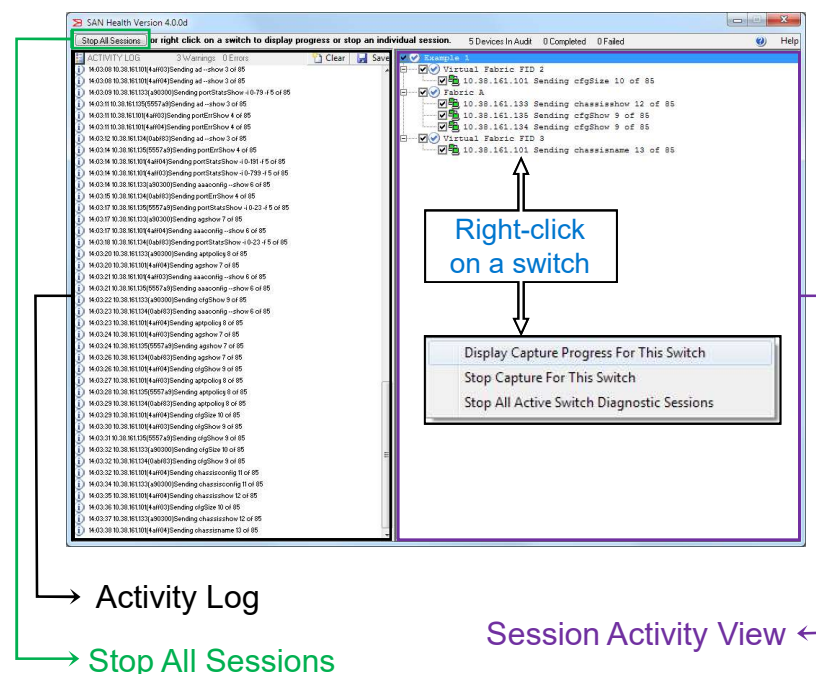
## 3. Running the Audit – Monitoring the Audit

- All activity can be stopped at any time by clicking on “Stop All Sessions”
- The tree view displays the progress for each switch
- Right-click on any switch for more options

Display the detailed progress of that switch

Stop the capture for the selected switch

Stop the capture for all the switches

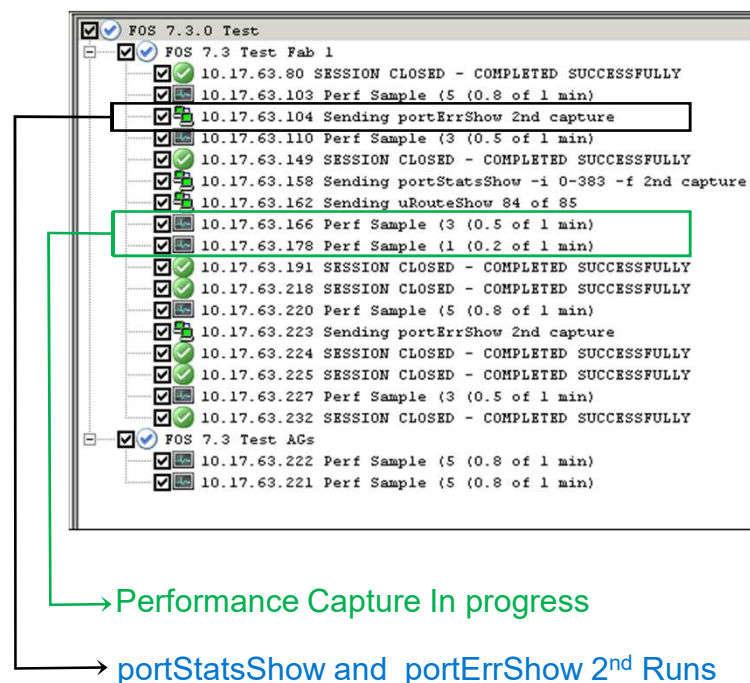


# Running SAN Health

## 3. Running the Audit – Performance Capture and 2<sup>nd</sup> Port Stat Capture

- FOS switches can be set to capture port throughput data for a specified duration
- PortstatsShow and portErrShow will run a second time at the end of the audit to capture the delta in port error counters that occurred over the duration of the audit

New for 4.0!



# Report Generation

## 4. Generate the Report – Reviewing the Captured Data

- The final screen displays all captured diagnostic data
- Upload the raw diagnostic data file to the centralized report generators for automated analysis
  - Click the button to automatically send the file via HTTPS
  - Click on the email address to generate an email and attach the file
  - Click on the URL to manually upload via HTTPS

19 Devices in Audit, 19 Completed and 0 Failed

C:\SAN Health Audits\Sam\_Yadmin\_141231\_1007\_FOS\_7\_3\_Fabric\_BSH

<?xml version="1.0" encoding="ISO-8859-1"?>  
<!-- SAN Health Data File Created Using SAN Health Version 4.0.0b Test Build1 -->  
<SANHealthAuditData>  
<CaptureDate>  
<Date>  
<Day>20</Day>  
<Month>02</Month>  
<Year>2014</Year>  
</Date>  
<Time>10:07:23</Time>  
</CaptureDate>  
<SANHealthVersion>  
<Major>4</Major>  
<Minor>0</Minor>  
<Revision>0</Revision>  
</SANHealthVersion>  
<AuditUniqueId>  
<ID>1B73225FV634S</ID>

To complete the SAN Health process you must send the encrypted SAN Health data file (.BSH) to the report generation queue so that it can be turned into an Excel-based report and Visio topology diagram.

Send the diagnostic data file to the report generation queue via HTTPS

Or submit the file yourself manually  
As an email attachment to  
[SHUpload@brocade.com](mailto:SHUpload@brocade.com)  
or click on the link below and follow the instructions  
<https://my.brocade.com/upload/ReportGeneration.jsp>

If you do not receive a report back within 48 hours, please contact SHAdmin@brocade.com.

Processing time is usually from 1 to 8 hours depending on fabric size, 48 hours is stated to allow for any error conditions that may arise.

Three files will be returned to you inside a single zip file: A report in Microsoft Excel format (.xls)  
A topology diagram in Microsoft Visio format (.vsd)  
A SAN Health Professional data file (.SHData)

The report will be posted to a secure single-sign-on download page against the user ID  
[syadmin@san\\_techs.com](mailto:syadmin@san_techs.com)

If an account for this user ID does not already exist, it will be automatically created and an activation email sent.

Return to Start Screen Exit

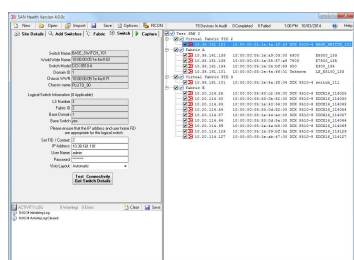
Upload Methods Review Captured Data

Audit Results And Filename



# SAN Health Report Generation

## Automated Processing and Report Return



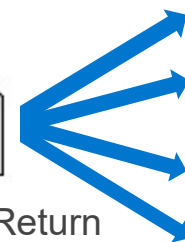
Diagnostics Capture



Report Generator



Report Return

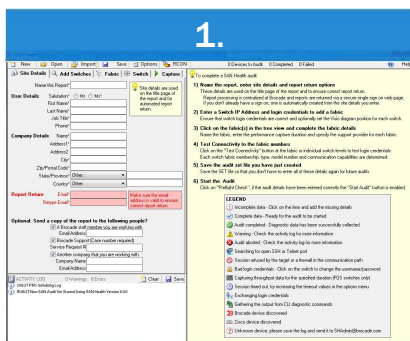


- 1) Detailed Report (Excel)
- 2) Topology Diagram (Visio)
- 3) SAN Health Pro Data File
- 4) Audit Data as CSV

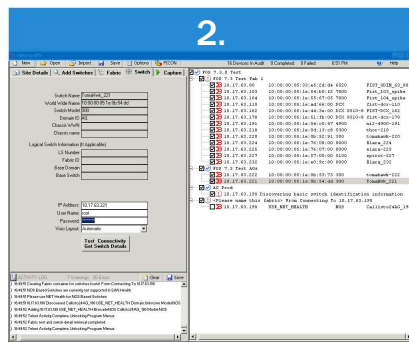
- The report generators analyze the raw diagnostic data, graph the performance data and generate a detailed report, topology diagram and CSV data files
- Report generation is a real time automated backend process
- Usually 1 to 10 hours to process (48 hour maximum)
- Reports are returned via a single sign on secure download
- Reports are automatically deleted after 30 days

# Summary of the SAN Health Process

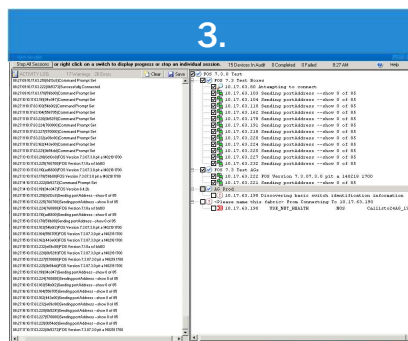
## 4 Easy Steps



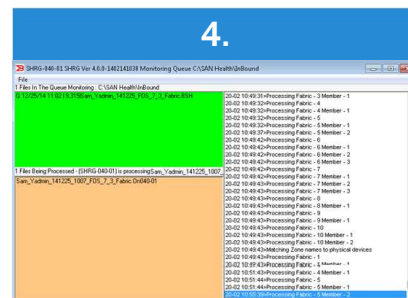
Enter Site Details



Enter Switch and Fabric Details



Run the Audit

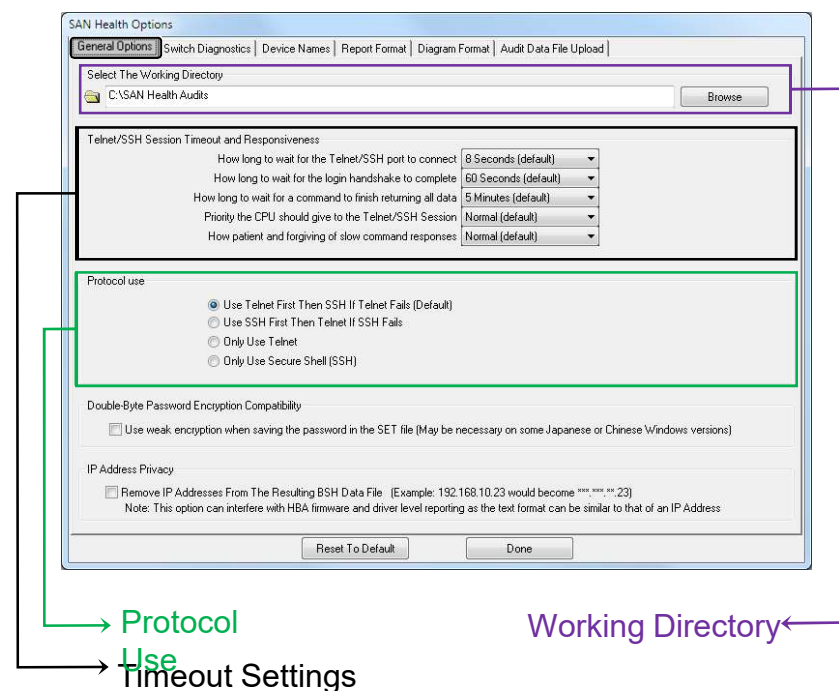


Generate the Report

# Setting the SAN Health Options

## General Options Tab

- **Audit options are typically left as default**
- Some environments may require changes to the timeouts or to the SSH/Telnet order
- IP addresses can be stripped from the raw data if desired

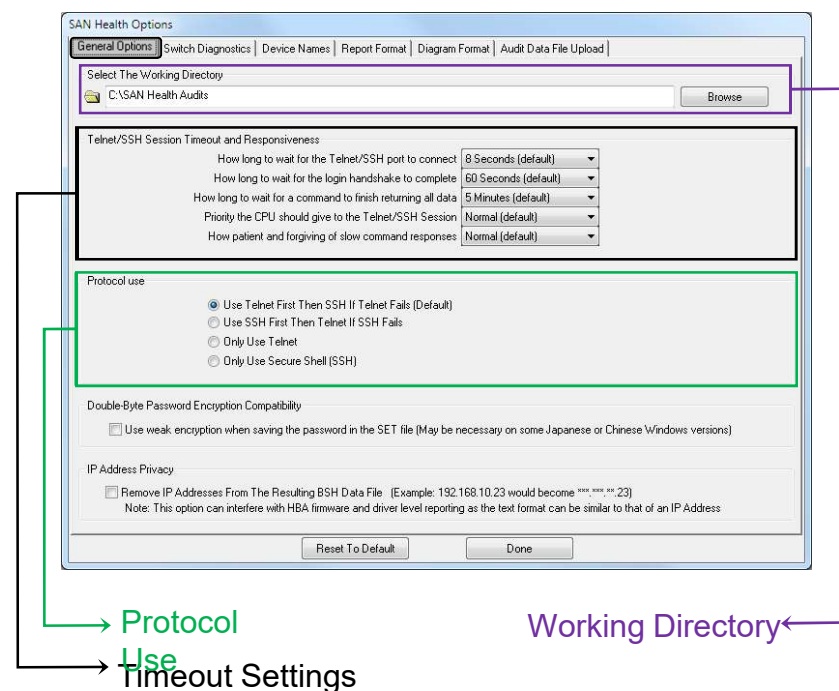


# Setting the SAN Health Options

## Switch Diagnostics Tab

- Review the diagnostic commands that will be sent to the switches during the audit
  - Deselecting commands will result in less information in the final report
- Port Statistics can be automatically reset at the end of the audit to see the changes between reports

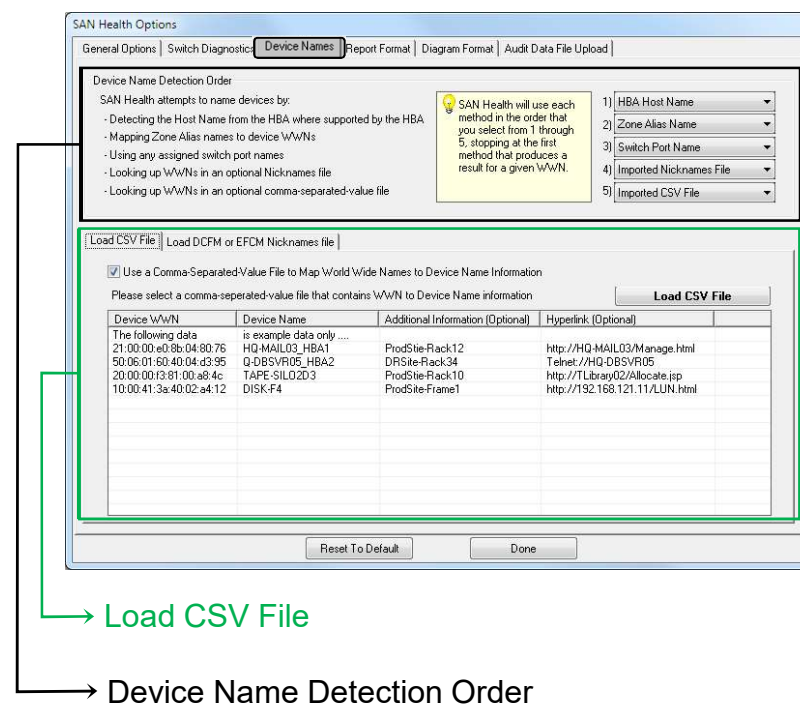
New for 4.0!



# Setting the SAN Health Options

## Device Names Tab

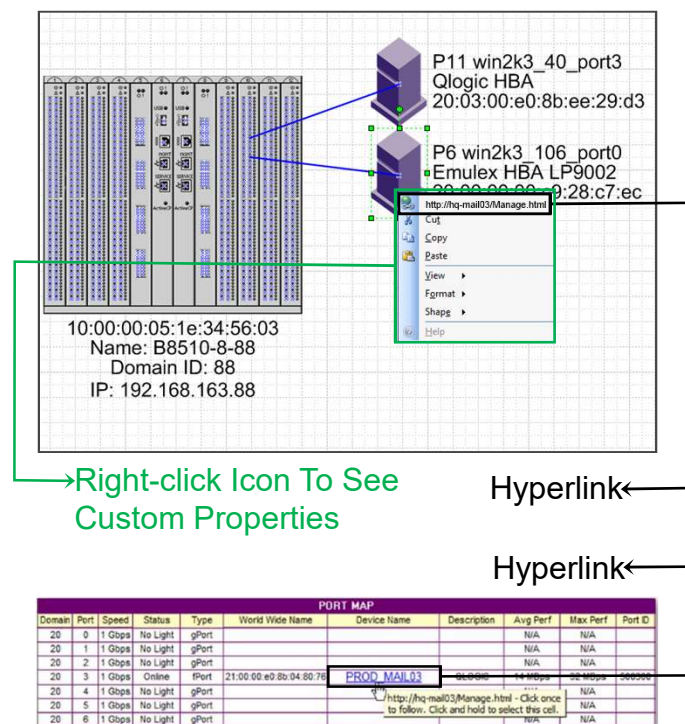
- Set the method for determining device names here
- An optional CSV file can be loaded
  - Use this CSV to add custom names and any descriptive text
  - A hyperlink can also be added to any device to allow it to be linked in the report (see next page for hyperlink details)



# Setting the SAN Health Options

## Hyperlinks

- Hyperlinks allow external management applications to be launched from the Excel report or Visio diagram
  - Example Hyperlinks
    - <http://HQ-MAIL03/Manage.html>
    - [Telnet://HQ-DBSVR05](telnet://HQ-DBSVR05)
    - <http://TLibrary02/Allocate.jsp>
    - [LUN\\_Allocate.cgi](#)
    - [FRAME\\_DF\\_Report.txt](#)
  - If the hyperlink is to a file, the file must be in the same directory as the Visio or Excel file.



Hyperlink

Domain	Port	Speed	Status	Type	World Wide Name	Device Name	Description	Avg Perf	Max Perf	Port ID
20	0	1 Gbps	No Light	gPort				N/A	N/A	
20	1	1 Gbps	No Light	gPort				N/A	N/A	
20	2	1 Gbps	No Light	gPort				N/A	N/A	
20	3	1 Gbps	Online	iPort	21:00:00:e0:8b:04:60:78	PROD_MAIL03	PROD_MAIL03	14 MBps	50 MBps	200200
20	4	1 Gbps	No Light	gPort				N/A	N/A	
20	5	1 Gbps	No Light	gPort				N/A	N/A	
20	6	1 Gbps	No Light	gPort				N/A	N/A	

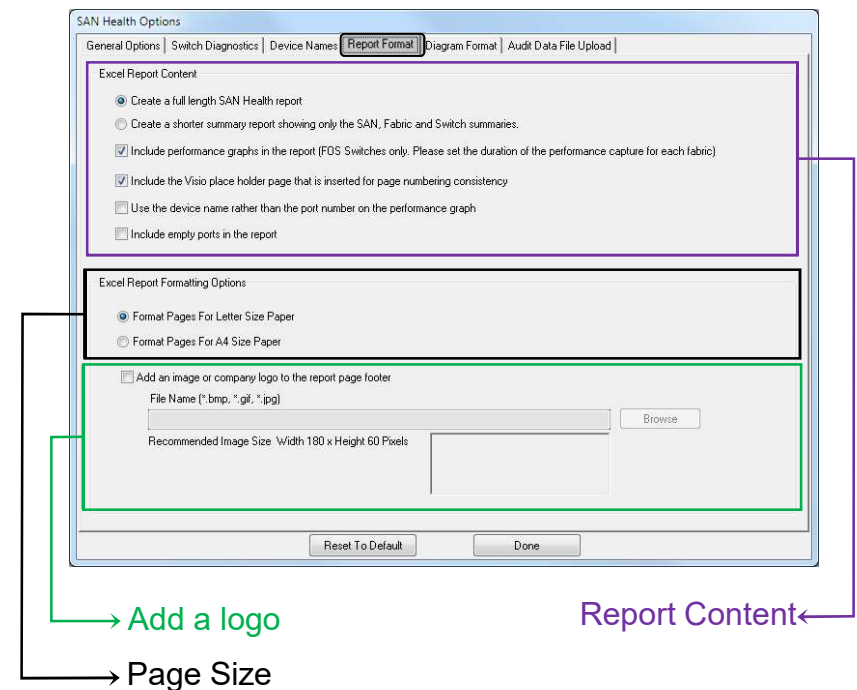
<http://hq-mail03/Manage.html> - Click once to follow. Click and hold to select this cell.



# Setting the SAN Health Options

## Report Format Tab

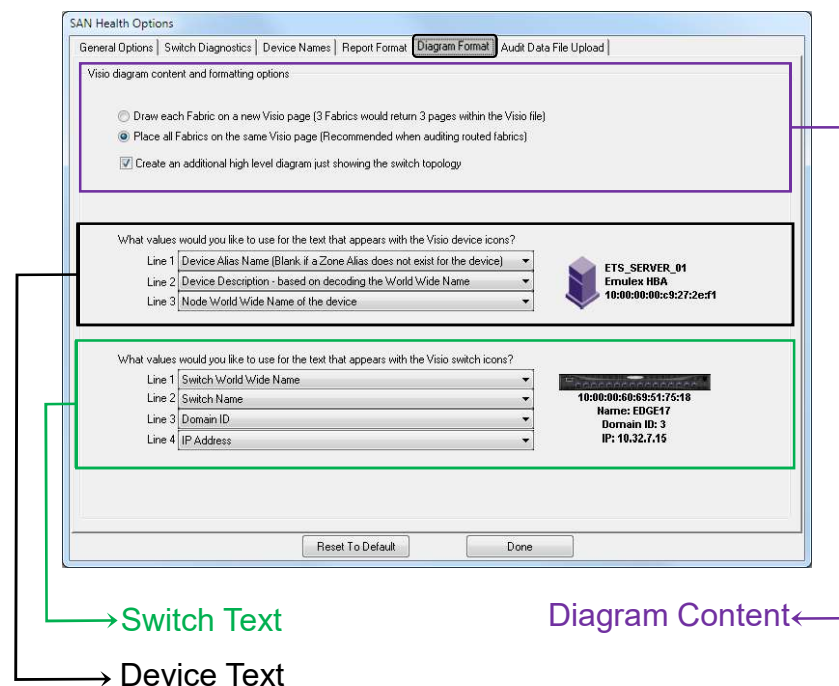
- Select report content
- Set report page size (Letter or A4)
- Add a company logo to the report footer



# Setting the SAN Health Options

## Diagram Format Tab

- Set whether fabrics are drawn on one page or multiple pages
- Set whether an additional high-level diagram consisting of just switches is created
- Set what data fields populate the text next to device icons and the text under switch icons



# Setting the SAN Health Options

## Automatic Data Upload Tab

- Auto upload of diagnostic data file can be set to occur at the end of each audit
  - HTTPS upload can be set and tested
  - Email settings can be set and tested
  - Set SAN Health to use a proxy server if required

The screenshot shows the 'SAN Health Options' dialog box with the 'Audit Data File Upload' tab selected. The dialog has a tabbed interface with the following tabs: General Options, Switch Diagnostics, Device Names, Report Format, Diagram Format, and Audit Data File Upload. The 'Audit Data File Upload' tab contains the following settings:

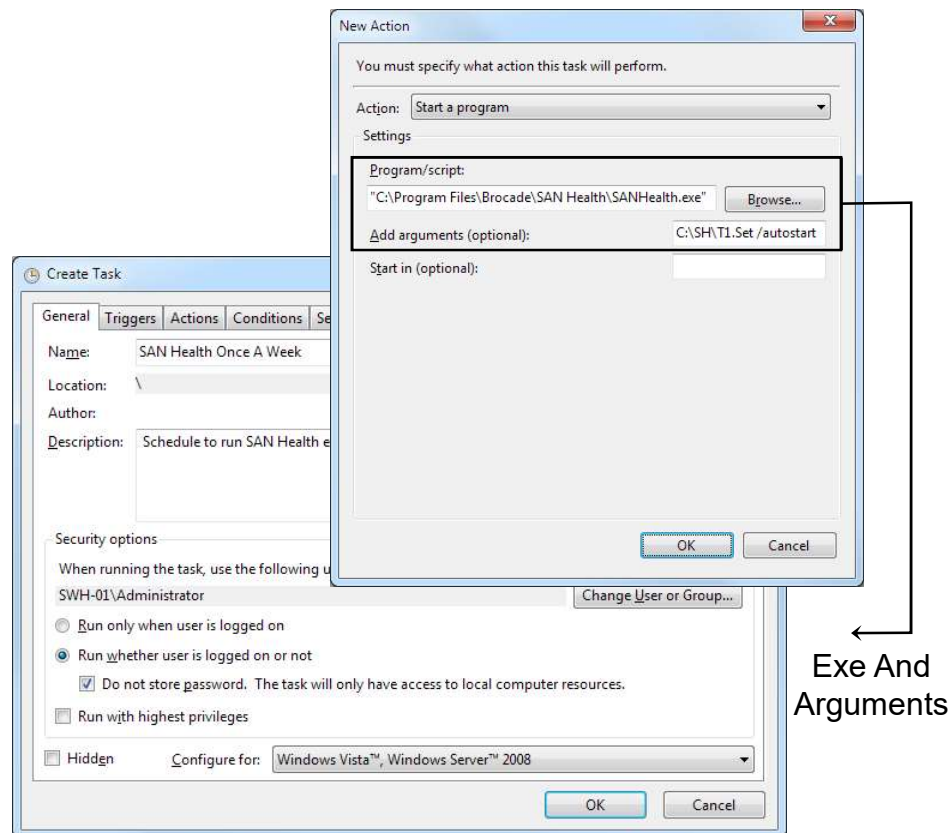
- Https Connection Options:**
  - ☒ Use a Proxy server. Fields for Proxy Server Address and Proxy Server Port (80) are visible.
  - Buttons: Test Proxy Connection, Advanced Options.
- Automatically Send the BSH Data File in for Processing:**
  - ☒ Automatically send the BSH file to the report generation queue on audit completion.
  - ☒ Submit the BSH file using https. Buttons: Test https Connection, Send A Test File.
  - ☐ Submit the BSH file using email. Fields for Set The From Address As (lemignan@e-i.com), Email The BSH Data File To (SHUupload@brocade.com), and SMTP Server (Optional) are visible. Button: Send A Test Email.

At the bottom of the dialog are buttons for 'Reset To Default' and 'Done'.

# Running SAN Health

## Scheduling Audits

- Windows Scheduler can run audits on a set schedule
  - Run SANHealth.exe as the program
  - Use the .SET file as one argument
  - Add /autostart as a second argument
  - Password does not need to be stored
  - User does not need to be logged in for SAN Health to run





# Examples of Report Content Use



# Report Content

Easy to Navigate Spreadsheet

- The Microsoft Excel-based reports are structured in a hyperlinked, drill-down hierarchy of SAN to Fabric to Switch to Port
- Each page as a hyperlink back to the Table Of Contents to make navigation through large reports easier

TABLE OF CONTENTS	
<b>SAN SUMMARY</b>	
SAN Summary For SAN_Example.....	<a href="#">Page 5</a>
Device Details.....	<a href="#">Page 6</a>
Visio Topology Diagram.....	<a href="#">Page 7</a>
Comments And Recommendations.....	<a href="#">Page 8</a>
<b>FABRIC DETAILS</b>	
<a href="#">Fabric - Storage_Edge</a>	
Fabric Summary and Port Map For Storage_Edge.....	<a href="#">Page 9</a>
Zone Summary For Storage_Edge.....	<a href="#">Page 11</a>
<a href="#">Fabric - Backbone</a>	
Fabric Summary and Port Map For Backbone.....	<a href="#">Page 13</a>
Zone Summary For Backbone.....	<a href="#">Page 15</a>
<a href="#">Fabric - Server_Edge</a>	
Fabric Summary and Port Map For Server_Edge.....	<a href="#">Page 16</a>
Zone Summary For Server_Edge.....	<a href="#">Page 24</a>
<b>SWITCH DETAILS</b>	
Switch Summary and Port Details For sw3200_32.....	<a href="#">Page 26</a>
Switch Summary and Port Details For sw3800_38.....	<a href="#">Page 29</a>
Switch Summary and Port Details For sw7500-75.....	<a href="#">Page 32</a>
Switch Summary and Port Details For sw48000-48.....	<a href="#">Page 35</a>
Switch Summary and Port Details For sw4100-41.....	<a href="#">Page 41</a>
Switch Summary and Port Details For sw200e-20.....	<a href="#">Page 44</a>
Switch Summary and Port Details For sw24000-24.....	<a href="#">Page 47</a>
Switch Summary and Port Details For sw3850-50.....	<a href="#">Page 51</a>
Switch Summary and Port Details For sw3900-39.....	<a href="#">Page 54</a>
<b>APPENDICES</b>	
Explanatory Notes.....	<a href="#">Page 57</a>
Glossary.....	<a href="#">Page 65</a>
References.....	<a href="#">Page 67</a>



# Report Content

## In Report Explanations

- Many cells in the report can be selected to see more info in the formula bar
- Learn more about report content such as zone membership, hanging zones, etc

Select the cell you would like Information on

Look in the formula bar for explanatory details

Id

fx Hst:Trg (Total number of hosts compared to the total number of targets)																				
PORT USE																				
Switch Name	Port Counts			Attached Device Types				Inter Switch Links			Fan Out Ratios		Port Speeds							
	Total	Free	Unltd	Disk	Tape	Host	Aplnc	Gtway	ISL	TrkMst	TrkSlv	Hst:Trg	Dvc:ISL	1G	2G	4G	8G	16G	1GE	10GE
FAMDA02	336	155	0	44	34	77	0	0	26	1	0	0.99:1	5.74:1	0	4	304	28	0	0	0

-

fx Average (During the performance capture portion of the audit, this was the average throughput for this ISL)																			
ISL / TRUNK SUMMARY																			
From Switch				To Switch				ISL or Trunk Type	FSPF Cost	Farthest Pnt (Hops)	Dynamic or Static	Available Bandwidth and Utilization							
Name	Dom	Area	Slot/Port	Name	Dom	Area	Slot/Port					Speed	BW	Average	% Use	Peak	% Use		
FAMDA03	174	24	fc1/25	FAMDA02	22	-	fc1/25	Normal ISL	-	1	D	8 Gbps	8	12.2MB/s	1%	44.6MB/s	3%		
FAMDA03	174	72	fc2/25	FAMDA02	22	-	fc2/25	Normal ISL	-	1	D	8 Gbps	8	11.2MB/s	1%	41.4MB/s	4%		

fx

fx Hang Mems (This is the total number of zones that are hanging, meaning they have one or more members defined, but not present)														
CONFIG "ZONESET_A" IS ACTIVE														
Zone Database Use	Aliases Statistics				Zone Statistics				Config Statistics				Zones in	
	Total	Avg Mems	Max Mems	Hang Mems	Total	Avg Mems	Max Mems	Hang Mems	Total	Avg Mems	Max Mems	Hang Mems	Active Config	
1.2%	79	0.99	1	12	211	3.97	19	146	4	27.75	54	49	211	

# Report Use Examples

## Zone and Configuration Checking

15 ALIASES														
Alias Name		Alias Member(s)												
dell_4_3bwwn	10:00:00:00:c9:29:04:77													
dell_4_4bwwn	10:00:00:00:c9:29:04:32													
demotestalias	156.5													
hitachi_00	50:00:60:e8:02:ee:78:00													
dmx800_16c1	50:06:04:8a:cc:c8:8c:6f													
dmx800_16d1	50:06:04:8a:cc:c8:8c:7f													
ZONING METRICS														
Fabric Name		Database Use	Aliases Statistics				Zone Statistics				Config Statistics			
			Aliases	AvMem	MaxMem	Hanging	Zones	AvMem	MaxMem	Hanging	Configs	AvMem	MaxMem	Hanging
Prod-1		6.1% of 127k	72	1.8	2	7	62	2.9	6	7	1	62	62	1
Prod-2		6.1% of 127k	84	1.1	2	3	64	3.8	8	5	1	64	64	1
DR-1		6.6% of 127k	128	1.3	2	17	28	4.8	13	9	1	28	28	1
DR-2		9.5% of 127k	182	1	2	27	41	6.2	14	20	2	40.5	41	2
TOTALS			466	1.3	2	54	195	4.4	14	41	5	48.6	64	5

- Hanging zones are identified, these are most likely historical zones where the device has moved or has been decommissioned
- Alerts are provided for zones with too many members and these should also be examined

Domain	Port	Speed	Status	Type	World Wide Name	Alias Name	Description	Avg Perf	Max Perf	Port ID
4	0	2 Gbps	Online	F-Port	10:00:00:00:c9:2b:50:a5	ETS_FILE01_2	EMULEX	37.6 MB/s	69 MB/s	040000
4	1	2 Gbps	Online	F-Port	10:00:00:00:c9:2d:03:71	NOT ZONED	EMULEX	0 MB/s	0 MB/s	040100
4	2	2 Gbps	Online	F-Port	10:00:00:00:c9:2b:9d:ac	ETS_BOOTP01	EMULEX	22.6 MB/s	65 MB/s	040200
4	3	2 Gbps	Online	F-Port	10:00:00:e0:02:02:88:24	IT_TAPE	CROSSROADS	25.4 MB/s	68 MB/s	040300
4	4	2 Gbps	Online	E-Port	10:00:00:60:69:51:73:1b	To CORE15	ISL	14.9 MB/s	44 MB/s	
4	5	2 Gbps	Online	E-Port	Trunk Slave		ISL	14.8 MB/s	44 MB/s	

- Devices that you forget to zone will not be able to communicate

# Report Use Examples

## Switch Setting Consistency

- Ensure consistency of management settings
- Easily identify configuration anomalies
- Check monitor and alert settings

HEALTH STATUS AND MONITORING																	
Switch Name	Switch State		Power Supplies			Fans			Temp Sensors			Errors		SNMP		SysLog	
	Marg	OK	Bad	Marg	OK	Bad	Marg	Ok	Low	OK	High	Lvl1	Lvl2	No	Yes	No	Yes
SHRF001	0	1	0	0	2	0	0	4	1	3	0	0	0	0	1	0	1
SHRF002	0	1	0	0	2	0	0	4	1	3	0	0	0	1	0	0	1
SHRF003	0	1	0	0	2	0	0	4	1	3	0	0	0	0	1	1	0
SHRF004	0	1	0	0	2	0	0	4	1	3	0	0	0	0	1	1	0
TOTALS	0	2	0	0	4	0	0	8	2	6	0	0	0	1	3	2	2

SHRF001 IN FABRIC FP_1Z UNIX			
Switch Name	SHRF001	Brocade Model	DCX 8510
IP Address	10.125.233.12	WwN	10:00:00:60:69:81:3f:1a
FC IP address	0.0.0.0	Domain ID	70
Vendor	Hitachi Data Systems	Serial Number	FS010014205
Switch Status	HEALTHY/OK	MAC Address	N/A
Active Config	ON (ZoneConfig)	Ethernet Port	AUTO
Zone DB Use	8.1 % of 127 kbytes	Switch Date	N/A
POST	Enabled	QuickLoop	Disabled
Telnet Timeout	0 minutes	Fabric Watch	Alarms are disabled
		Role in Fabric	Subordinate

MONITORING AND ALERTING							
FABRIC WATCH	SYSLOG SETTINGS						
	Status	Syslog Status	IP Address 1	IP Address 2	IP Address 3	IP Address 4	IP Address 5
	disabled	Not In Use	N/A	N/A	N/A	N/A	N/A
SNMP SETTINGS							
Switch Description		Switch Location		Contact Information			
FibreChannelSwitch		EndUserPremise		FieldSupport			
Community Strings : SecretC0de(rw)		OrigEquipMfr(rw)		private(rw)		public(ro)	
Access Control List : Not Configured		Not Configured		Not Configured		Not Configured	

# Report Use Examples

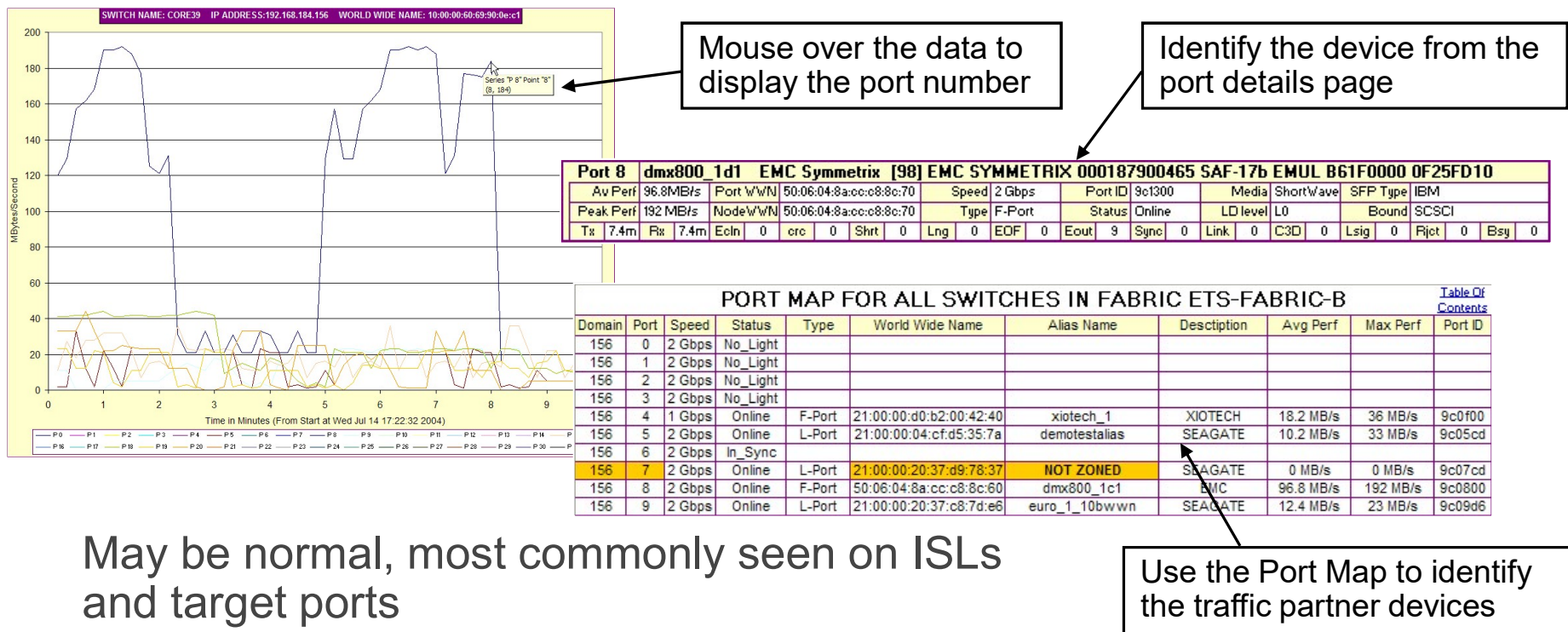
## Fan-Out-Ratios and Potential Oversubscription

PORT USE														
Fabric Name	Port Use						Fan Out Ratios			Port Long Distance Modes				
	Disk	Tape	Host	ISL	Free	Total	Host:Disk	Port:ISL	Device:ISL	10km	25km	50km	100km	Auto
Prod-1	6	11	48	28	83	176	8:1	5.29:1	1.32:1	176	0	0	0	0
Prod-2	2	18	62	32	78	192	31:1	5:1	1.56:1	192	0	0	0	0
DR-1	28	0	91	42	79	240	3.25:1	4.71:1	1.83:1	240	0	0	0	0
DR-2	30	5	101	54	66	256	3.37:1	3.74:1	1.52:1	256	0	0	0	0
TOTALS	66	34	302	156	306	864	4.58:1			864	0	0	0	0

- High Host to Disk ratios implies that the disk port may be oversubscribed
  - Check the traffic pattern on the disk ports
  - Use Fabric Watch to monitor the buffer credits alerts on that port
  - Check the disk vendors recommended fan-out-ratio
- High Device to ISL ratios may be indicative of a poor design or a higher potential for congestion

# Report Use Examples

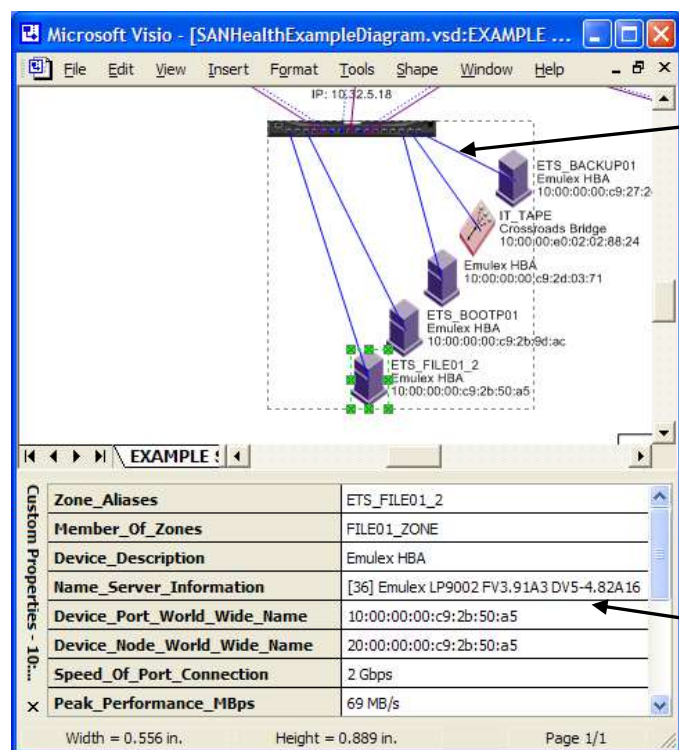
High levels of Traffic and Unusual Spikes





# Diagram use Case Examples

## Finding Embedded Data Within Visio Icons



Color coded connectors that represent the link's bandwidth

- Microsoft Visio based topology diagram
- Point in time accurate diagram
- User selectable device text

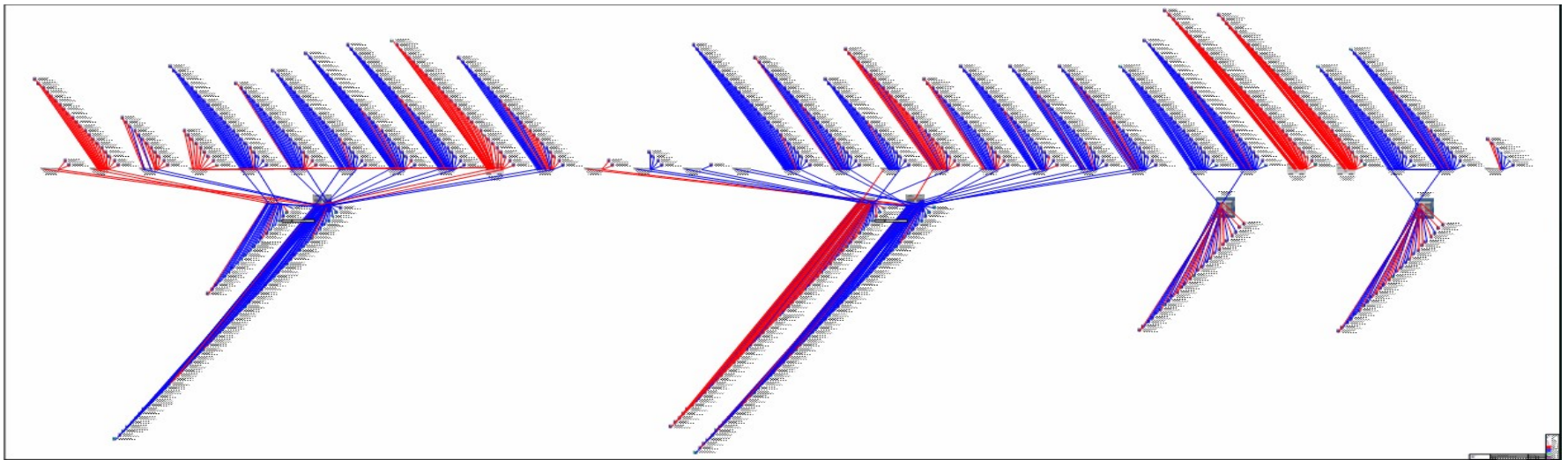
Custom Properties Window displays the attributes of every component in the diagram



# Diagram use Examples

## Migration Planning

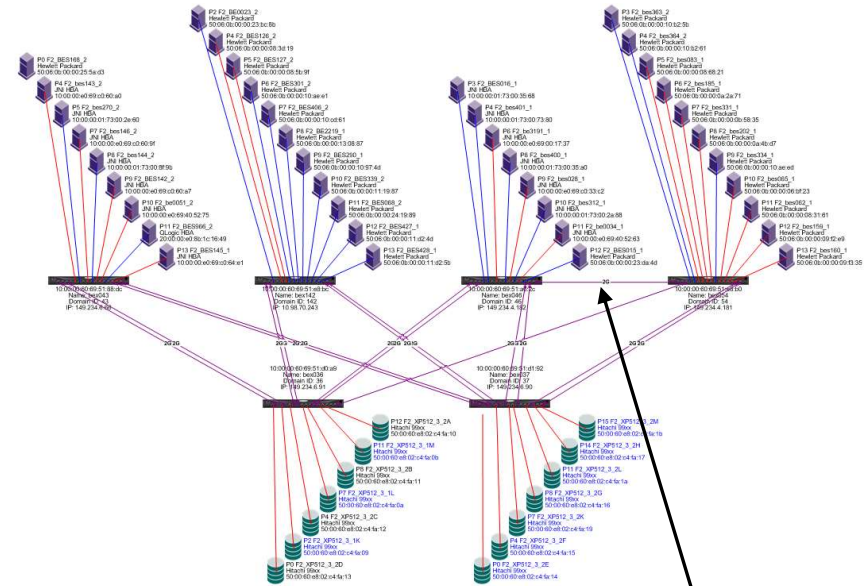
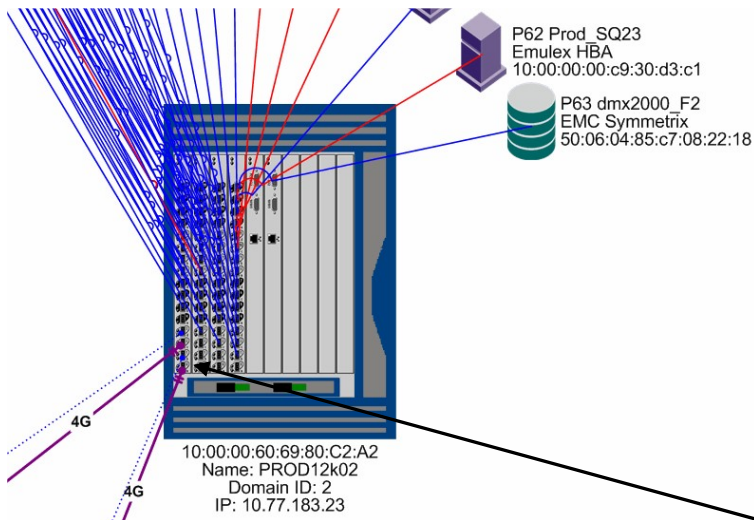
A point in time snapshot of the environment assists when planning a migration  
Additional snapshots during the migration are useful milestone or documentation checkpoints



# Diagram Use Examples

## Physical Configuration Review

- Problems are sometimes only obvious when you look at a diagram



Multiple ISLs going to a single blade may not be by-design

DELLEMC