

To 5G — and Beyond

No boundaries, just powerful telecommunications insights with Dell PowerEdge XE9680 Servers with Intel Gaudi 3 AI Accelerators

The future, while uncertain, brings exciting possibilities for communications service providers (CSPs), especially with advancements in artificial intelligence (AI) and the impact it can have on your networks.

Test the limits of what you can do — and ultimately achieve with your network — when you power telecom AI with an open infrastructure built on Dell PowerEdge XE9680 6U Servers and Intel® Gaudi® 3 AI Accelerators.

Together, let's break proprietary boundaries, confidently forge ahead and tap into your telecom network's hidden potential.



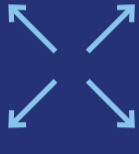
No-compromise telecom AI infrastructure for CSPs

Explore uncharted territory for your telecommunications network. The Dell leading eight-way platform is engineered to significantly enhance performance for your most complex workloads.



Manage

large and complex models and data sets with high GPU memory and bandwidth.



Scale

performance to meet specific telecom demands with eight Intel Gaudi 3 900W OAM AI accelerators.

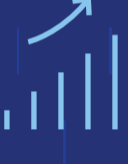
Tailored

to your telecom needs

Design your telecom open ecosystem your way. Continue to drive network performance and monetize the enterprise edge with a foundation that is easily configured to meet today's telecommunications requirements and tomorrow's promise.

Accelerated telecom open ecosystem

With an open-source approach, and Ethernet access built in, the PowerEdge XE9680 with Intel Gaudi 3 AI Accelerator is perfect for CSPs looking to deploy open-source and industry ubiquitous coding protocols.

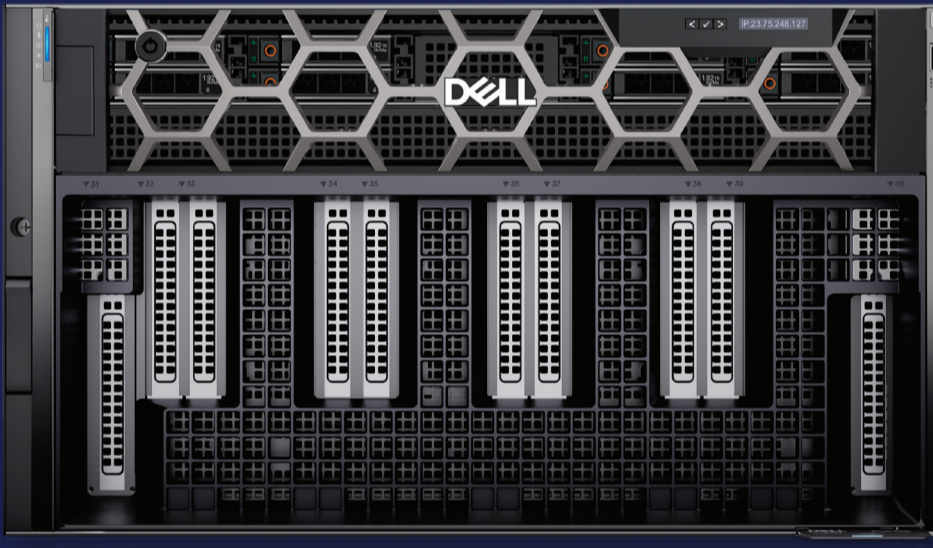


Sustain

your server long term. Intel Gaudi 3 AI Accelerators come with all-Ethernet connectivity and a five-year lifespan.



Top reasons to choose Dell and Intel



Fast ROI

Dell PowerEdge XE9680 Servers with Intel Gaudi 3 AI Accelerators are highly scalable, efficient and open telecommunications systems with integrated networking that drive cost savings for CSPs over time. Lower deployment TCO with standard Ethernet switches and fewer NICs. And sustain that ROI over an extended period with long-life Intel Gaudi 3 AI Accelerators.



Efficient networking

Integrated networking connects directly to an external accelerator fabric, without the need for external NICs — reducing complexity and total cost of ownership.

- PowerEdge servers include six integrated OSFP 800GbE ports.
- Every Intel Gaudi 3 accelerator has 24 integrated 24x200 GbE ports.



Open telecom ecosystem

Avoid vendor lock-in with an open and familiar telecom architecture that lets you power AI your way. Intel enables software abstraction and provides market-leading flexibility when porting existing PyTorch® code to Intel Gaudi 3 AI Accelerators.

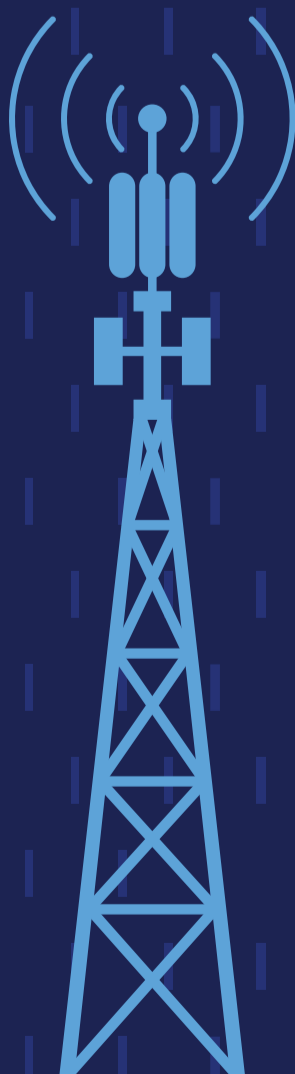
Dell AI for Telecom

Accelerate your telecom AI infrastructure. Power real outcomes.

Optimize
network performance

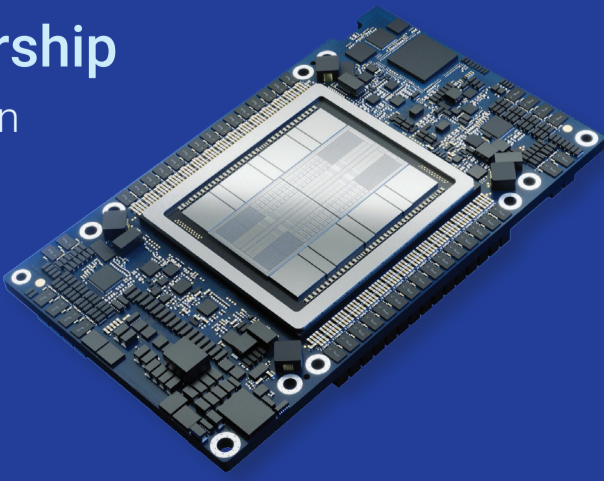
Run
any AI workload, anywhere

Accelerate
AI business outcomes



Confidently embrace the future with a trusted partnership

Push the boundaries of what you can do with telecom AI built on a proven Dell Technologies and Intel foundation. We've been jointly serving the needs of CSPs for years, and we'll continue to optimize your network and help you achieve your goals well into the future.



Learn more

at Dell.com/Telecom-AI