

Connected Health

Technology Solutions for Healthcare Providers



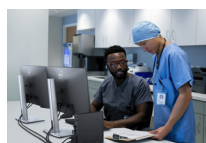
Healthcare use cases



Patient Registration and Administration

PAGE 3-4

Innovative technology solutions that align to new patients' needs to speed up registration and access to care.



Doctor's Office

PAGE 5

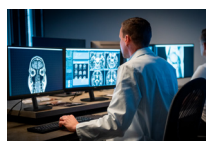
Efficient and space saving solutions for care providers in need of accurate, secure and fast access to patient information.



Exam Room

PAGE 6-7

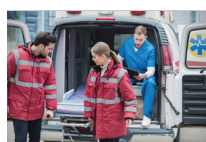
Innovative technology solutions that are flexible, secure and easy to manage so care providers can focus on their patient's needs.



Medical Imaging and Diagnosis

PAGE 8

The best tools for radiologists to work efficiently and confidentially to enable positive outcomes.



Emergency First Responder (EMS)

PAGE 9

Technology solutions for emergency medical service and care providers who need to be equipped with tools to perform in the most demanding situations.



Telehealth

PAGE 10

Gain on-demand secure access to patients, programs and data from wherever your patients are.



Interactive Learning

PAGE 11

Enter new worlds of learning potential with a VR-ready solution for mainstream desktop users.



Powering Patient Care with AI

PAGE 12

Enhance clinical workflows, digital health assistants and patient monitoring with Dell AI PCs.

Patient Registration and Administration

Innovative technology solutions that speed up registration and access to patient care.

Dell Recommended Solution

- A Dell Pro Micro
- B Dell Pro 24 Plus USB-C Hub Monitor - P2425HE
- C Dell Pro Micro All-in-One Stand - MFS22
- D Dell Webcam - WB3023
- E Dell Pro Keyboard and Mouse - KM5221W
- F Dell Pro Wireless Headset - WL3024



Keep your workspace clutter free with a complete all-in-one system. Simply attach the Dell Pro Micro to the Dell Pro Micro All-in-One stand fitted with a compatible Dell USB-C Hub monitor (sold separately).

With the optional Type-C module on the Dell Pro Micro, you can power your PC (up to 100W) using a single USB-C cable connected to the Dell USB-C Hub monitor.



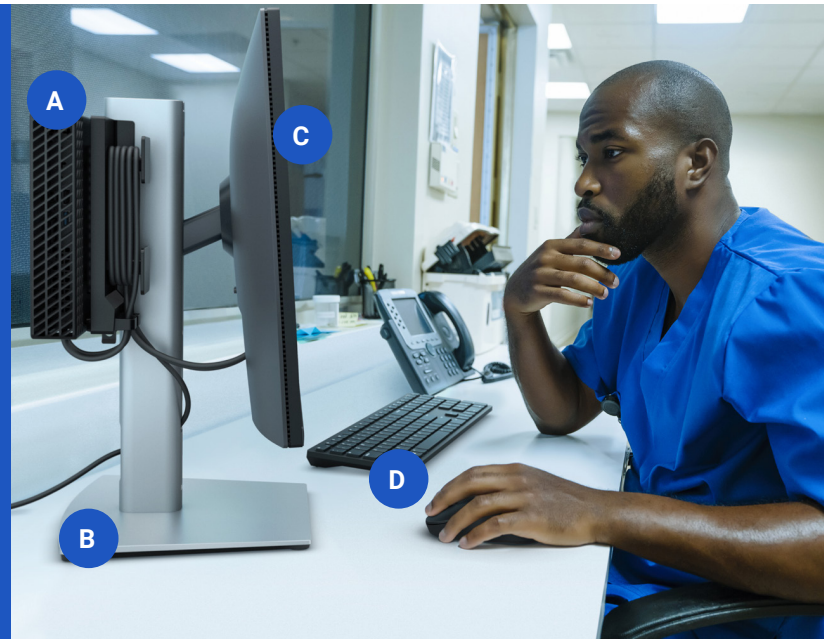
Some options may not be available in all regions.

Additional accessories and options

- G Dell Wall/Under-the-Desk VESA Mount (PC sold separately)
- H Dell Pro 24 Plus 16:10 USB-C Hub Monitor - P2425E
- I Dell Pro Keyboard and Mouse - KM5221W

Patient registration and administration

Securely access both their applications and patient records, regardless of location or available station.



The space-saving OptiPlex 3000 Thin Client supports up to three displays at 4K resolution and makes it easier to multi-task or simply see the bigger picture. Get the centralized control and security inherent to Dell thin clients and secure access to cloud-based applications and virtual workspaces.

Dell Recommended Solution

- A** OptiPlex 3000 Thin Client with Dell ThinOS or Windows 11 IoT Enterprise
- B** Dell Pro Micro All-in-One Stand - MFS22
- C** Dell Pro 24 Plus Monitor - P2425H
- D** Dell Pro Keyboard and Mouse - KM5221W

Additional accessories and options

Discover a wide selection of stands and mounting options designed and tested for OptiPlex 3000 Thin Client.



Doctor's Office

Care providers can get accurate, secure and fast access to patient information with our versatile mobile solutions.



A

B



Dell Recommended Solution

The ultra-light and slim Dell Pro Premium laptops offer exceptional portability, lightning-fast performance and extended battery life, ensuring seamless use throughout the day, from patient consultations to corridor conversations.

A Dell Pro 13 Premium or Dell Pro 14 Premium

B Dell Pro Premium Compact Mouse - MS7421W

C Dell Pro 7-in-1 USB-C Travel Hub - DA310*



E

G

F



H

Additional accessories and options

- E Latitude 7350 Detachable
- F Latitude 7350 Detachable Collaboration Keyboard
- G Latitude 7350 Detachable Active Pen
- H Dell EcoLoop Protective Case for Latitude 7350 Detachable

Some options may not be available in all regions
*Not pictured

Exam Room

Flexible, secure and easy to manage IT solutions so care providers can focus on their patients' needs.



Ultracompact, powerful desktop with flexible mounting options adapts to the needs of clinic and patient rooms. Gain AI-enhanced efficiencies with AI PC options.

Dell Recommended Solution

- A** Dell Pro Micro or Dell Pro Micro Plus with versatile mounting options
- B** Dell Pro 24 Plus Monitor - P2425H
- C** Dell Pro Plus Keyboard and Mouse - KM7321W
- D** Medical cart



Additional accessories and options

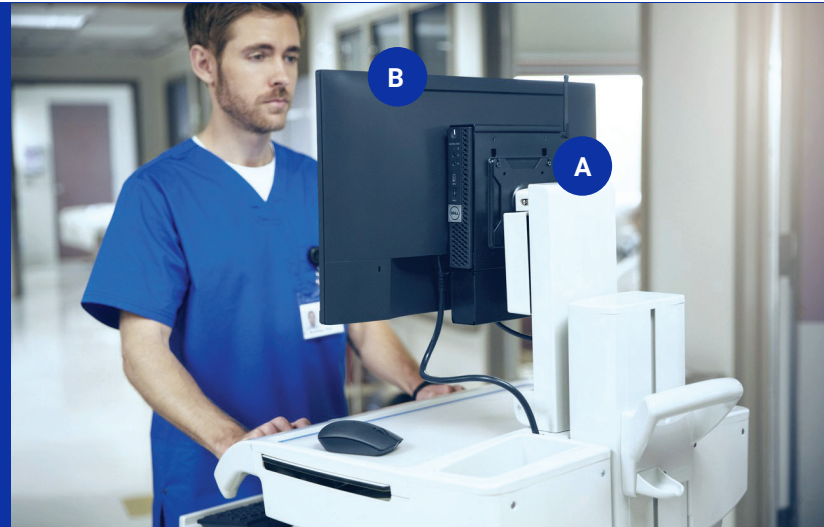
- E** Dell Pro Wireless Headset - WL3024



Some options may not be available in all regions

Exam Room

Innovative technology solutions that are flexible, secure and easy to manage so care providers can focus on their patient's needs.



Dell Recommended Medical Cart Solution for Exam Room

Get the centralized control and security inherent to Dell thin clients and secure access to cloud-based applications and virtual workspaces. [Learn More](#)

Additional options

A OptiPlex 3000 Thin Client* with Dell Dual VESA mount

B Dell Pro 24 Plus Monitor - P2425H

C Dell Pro Keyboard and Mouse - KM5221W*

D Dell Pro 14 laptop or Dell Pro 24 All-in-One configured with Dell ThinOS, or Windows 11 IoT Enterprise.*



Additional accessories and options

E OptiPlex 3000 Thin Client with vertical stand

F Dell Pro 24 Plus Monitor - P2425H (x2)

G Dell Pro Dual Monitor Arm - MDA20

H Dell Pro Plus Keyboard and Mouse - KM7321W

I Dell Pro Plus Wireless ANC Headset - WL5024

* Not pictured

Some options may not be available in all regions

Medical imaging and diagnosis

The best tools for radiologists who need to work efficiently and confidentially to enable correct diagnosis.



Dell Recommended Diagnostic Solution

Dell Pro Max and Precision workstations – the most powerful PCs from Dell. Built to power the most intensive applications and power world-class displays from Barco, for ultimate viewing and color accuracy.

A Precision 7875 Tower workstation

B Barco Coronis Fusion 6MP diagnostic display for general PACS*

C Barco Eonis MDRC-2321 SNIB clinical review display for navigation head*



Dell recommended home read diagnostic display solution

D Dell Pro Max 18 Plus*

E Barco Nio 3MP Dual-Head Diagnostic Displays for general PACS*

F Barco VisionTek eGFX Enclosure w/MXRT-5600*

Additional accessories

G APC Back-UPS Pro 1500VA Battery Backup & Surge Protector – A6993995*

* Not pictured
Some options may not be available in all regions

Emergency First Responder (EMS)

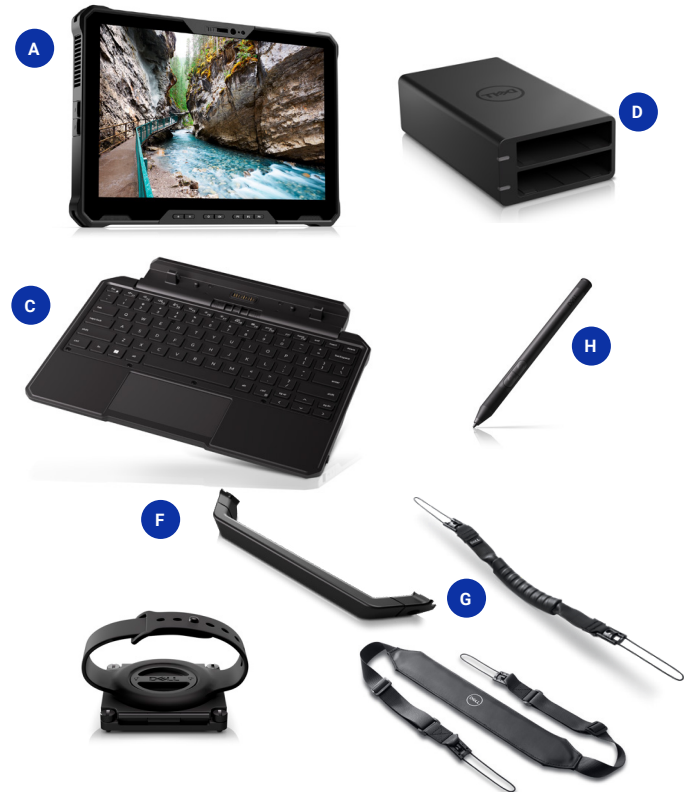
Technology solutions for emergency medical service and care providers who need to be equipped with tools to perform in the most demanding situations.



Dell Recommended Solution

Trusted rugged technology solutions that help monitor and provide care for patients, in-vehicle or on the go. Dell Latitude 7230 Rugged Extreme Tablet is lightweight, has a glove touch-capable screen, and can be disinfected.

- A** Dell Latitude 7230 Rugged Extreme Tablet
- B** Dell Rugged Tablet Dock*
- C** Detachable keyboard
- D** Dell Mobile Battery Charger
- E** Extended input and output module*
- F** Dell Rotating Hand Strap
- G** Carrying accessories like rigid handle, flexible handle and shoulder strap
- H** Rugged active pen



* Not pictured

Some options may not be available in all regions

Telehealth

Gain on-demand, secure access to patients, programs and data from wherever your patients may be located.

Dell Recommended Solution

Work in comfort and in style with a sleek, secure design. The optional 5MP IR camera* with Presence Detection wakes your PC upon approach and locks when you step away.

- A** Dell Pro 24 All-in-One Plus with FHD camera
- B** Height Adjustable Stand
- C** Dell Pro Keyboard and Mouse - KM5221W



Additional accessories and options

- D** Dell Pro 24 Plus Monitor - P2425H
- E** Dell Pro 24 All-in-One Plus (with built-in webcam)
- F** Fixed Stand
- G** Dell Pro Plus Wireless ANC Headset - WL5024
- H** Dell Pro Webcam - WB5023
- I** Dell Pro Premium Collaboration Keyboard and Mouse - KM900

*Not pictured.

Some options may not be available in all regions.

Interactive Learning

Enter new worlds of learning potential with a VR-ready solution for mainstream desktop users.



Dell Recommended Solution

Enable more immersive experiences with the desktop built to deliver rich virtual reality consumption. The Dell Pro Max Tower T2 features high performance graphics options and thrives in interactive learning environments.

A Dell Pro Max Tower T2

B Dell Pro Plus Keyboard and Mouse - KM7321W

C Dell Pro 27 Plus Monitor - P2725H

D HTC VIVE Pro Virtual Reality System



Additional accessories and options

E Dell Pro Dual Monitor Stand - MDS19

F 3DConnexion SpaceMouse Pro Wireless

G Dell Pro Premium Wireless ANC Headset - WL7024



Powering the future of patient care with AI

PREDICTIVE ANALYTICS

Clinic workflow & resource optimization

AI revolutionizes clinical workflows by automating routine tasks, enhancing decision-making, and optimizing resources. hospitals can manage patient flow, detect diseases early, minimize surgical risks in real time, and reduce clinician burnout through workload management.

DIGITAL HEALTH ASSISTANTS

AI-enabled customer service and self-service

Digital health assistants and chatbots transform patient care with personalized services, like self-scheduling, real-time monitoring, and 24/7 support, connected through advanced clinical data platforms.

DATA DRIVEN PATIENT CARE

Real-time patient monitoring for precision diagnostics

Create a multilingual, AI-driven chatbot to assist citizens with routine inquiries, such as tax filing, permit applications, or scheduling public services. The chatbot can streamline communication, ensuring accessibility for all residents.

Dell Recommended Solutions:

AI PCs for Clinician Mobility, E HR Access, Rounding, & Medicine
Dell Pro 13/14 Premium

High Performance AI PCs for Training or Model Prototyping

Dell Pro Max 16
Dell Pro Max Desktops

Buy AI Solutions:

M365 Copilot
NVIDIA AI Enterprise
NVIDIA Clara Guardian

Build AI Solutions

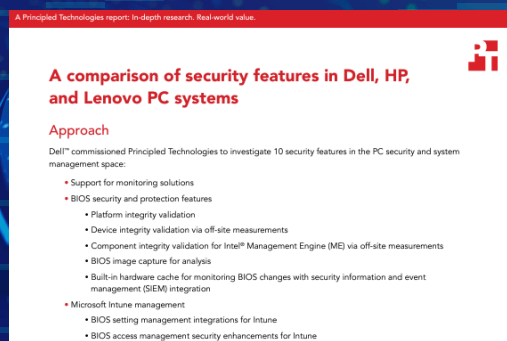
Dell Pro AI Studio
Dell Professional Services for AI
Dell Accelerator Services for RAG on Dell Pro Max AI PCs

Simplify IT

Our most secure¹ and most manageable² commercial PCs make IT management a breeze

World's Most Secure Commercial PCs¹

According to Principled Technologies, no PC manufacturer offers the BIOS-level visibility Dell does.



SECURITY

Improve fleet-wide security with multiple layers of defense.

Reduce the attack surface and enhance long-term cyber resilience with [Dell Trusted Workspace](#)



Be secure from first boot with rigorous supply chain controls.



Maintain BIOS integrity with deep, firmware-level visibility.



Protect end-user identity from malware that looks to steal credentials.



Enrich OS-level data with PC telemetry to speed detection, response and remediation.



Layer on advanced threat protection from our ecosystem of best-of-breed software partners.



Shrink the IT-security gap with an integrated, AI-enabled solution

Explore hardware-assisted security with Dell, Intel & CrowdStrike.

[Learn More >](#)

MANAGEABILITY

Best-in-class PCs and peripherals management – only from Dell.

With [Dell Management Portal](#), you can manage Dell PCs, over the cloud, in conjunction with Microsoft Intune.

[Dell Management Portal >](#)

And with Dell Device Management Console, you can save time with centralized and secure peripherals management.

[Dell Device Management Console >](#)

Update and secure your fleet of Dell devices, with one application – [Dell Client Device Manager](#).

[Dell Trusted Update Experience](#) makes it simple to update endpoints with the latest BIOS and driver versions. Dell is the only Top-5 PC vendor that:



Publishes³ a device drivers and downloads release schedule:

IT Admins can deploy fleet-wide device updates on a predictable timeline.

[Learn More >](#)



Dell has the industry's first:⁴

Partner Portal accessible in Microsoft Intune, with fleet-wide BIOS password access capability and Enterprise application access and publication capabilities

Binary Large Object (BLOB) package-based solution, for endpoint BIOS settings configuration, using Microsoft Intune

Hardware OEM systems management solution to integrate with Intel vPro



Simplify PC refresh with Dell Services

Enabling every step of the PC lifecycle

Dell APEX PC as a Service¹

Fully customizable monthly subscription that can include PCs, peripherals, software and services with no upfront investment.

APEX PC as a Service makes it easy to refresh to the latest PCs and seamlessly deploy, secure, manage, support and help with the retirement of devices.

[Dell APEX PC as a Service \(PCAAS\) >](#)

ProDeploy Client Suite

PC refresh starts with getting new devices in the hands of your end-users. Dell ProDeploy Suite streamlines operations and increases productivity with configured PCs that are ready to use on day one with dynamic cloud-based provisioning and imaging.

When transitioning from old to new technology, ProDeploy Plus includes the ability to securely erase sensitive end-user data with sophisticated tools to sanitize devices and includes Asset Recovery Services for responsible retirement.

[Dell ProDeploy Client Suite >](#)

Modern Lifecycle Solutions

Dell Premier

324%

ROI over 3 years³

Modernize IT purchasing by shopping your catalog in a tailored online solution. Gain control over the entire IT ecosystem to cut costs, standardize ordering, access analytics and more.

[Dell Premier >](#)

Asset Recovery Services

2.8B

Pounds of electronics recovered through all recovery programs since 2007²

Let Dell help you securely and responsibly retire your old IT equipment - regardless of brand - to allow for a seamless transition from old to new technology, while protecting both your business and the planet.

[Asset Recovery Services >](#)

ProSupport Suite for PCs

ProSupport Suite is more than a 24/7 break-fix solution, it's a set of tools that automate and optimize your environment with little to no human intervention or end-user disruption.

Select from a robust library of Dell-authored scripts that correct company-wide issues quickly, minimizing remediation times and maintaining peak system performance. ProSupport Suite provides telemetry-driven data to arm IT with insights and make targeted updates, all controlled from a single dashboard.

[ProSupport Suite for PCs >](#)

Disclaimers

Page No 13

1. Based on Dell internal analysis, October 2024 (Intel) and March 2025 (AMD). Applicable to PCs on Intel and AMD processors. Not all features available with all PCs. Additional purchase required for some features. Intel-based PCs validated by Principled Technologies. A comparison of security features (<https://www.principledtechnologies.com/Dell/OEM-security-feature-comparison-0424.pdf>), April 2024.
2. Based on Dell internal analysis, January 2025. Most-manageable commercial PCs when comparing the systems management capabilities of Dell Update Processes, Dell Manageability Solution capabilities and integrations with 3rd Party Management Solutions, with competitor update processes, systems management solution capabilities and integrations with 3rd party management solutions. 3rd Party Management Solution - Microsoft Intune, is a separate purchase.
3. Dell publishes a device drivers and downloads release schedule. Source: Based on internal analysis, May 2023. When comparing publicly available device drivers and downloads release schedules published by the Top 5 PC vendors, as of May 2023.
4. Capabilities of Dell Update Processes, Dell Management Portal and Dell Manageability Solutions capabilities and integrations with 3rd Party Management Solutions, with competitor update processes, partner portal capabilities in Microsoft Intune systems management solution capabilities and integrations with 3rd party management solutions. 3rd Party Management Solutions - Microsoft Intune, Workspace ONE, are separate purchases. Intel vPro, to support out-of-band systems management, is an additional system configuration upgrade; and Dell has the industry's first:
 - a. Based on Dell internal analysis - October 2024. Based on Dell Management Portal capabilities in Microsoft Intune compared to competitor Partner Portal capabilities in Microsoft Intune. Dell Command | Endpoint Configure for Microsoft Intune - the industry's first Binary Large Object (BLOB) package-based solution, for securely configuring & managing endpoints, using Microsoft Intune. Disclaimer: Industry's first device manageability solution to use a Binary Large Object (BLOB) package, recognized by Microsoft Intune, for secure endpoint configuration and management.
 - b. Dell Command | Intel vPro Out of Band - the industry's first hardware OEM systems management solution to integrate with Intel vPro - for remote management of systems, regardless of power-state. Disclaimer: Based on Dell internal analysis, November 2023.
 - c. Dell Command | Intel vPro Out of Band - the industry's first hardware OEM systems management solution to integrate with Intel vPro - for remote management of systems, regardless of power-state. Disclaimer: Based on Dell internal analysis, November 2023.

Page No 14

1. Payment solutions provided and serviced by Dell Financial Services L.L.C. or its affiliate or designee ("DFS") for qualified customers. Offers may not be available or may vary in certain countries. Where available offers may be changed without notice and are subject to product availability, applicable law, credit approval, documentation provided by and acceptable to DFS and may be subject to minimum transaction size. Offers not available for personal, family or household use. Dell Technologies and the Dell Technologies logo are trademarks of Dell Inc. Restrictions and additional requirements may apply to transactions with governmental or public entities. At the end of the contract, the customer may renew the contract or return the equipment to DFS.
2. Dell Technologies has recovered 2.8 billion pounds of electronics since 2007. Source: Based on Dell internal analysis of publicly available data, April 2023.
3. Based on a Forrester Total Economic Impact™ Study Commissioned by Dell Technologies and AMD, "The Total Economic Impact™ Of Dell Premier," February 2024. Full study: The Total Economic Impact™ of Dell Premier.