

DELL TECHNOLOGIES SOLUTIONS FOR MEDITECH ENVIRONMENTS

Comprehensive health records for next-generation patient care

WHY DELL TECHNOLOGIES

1

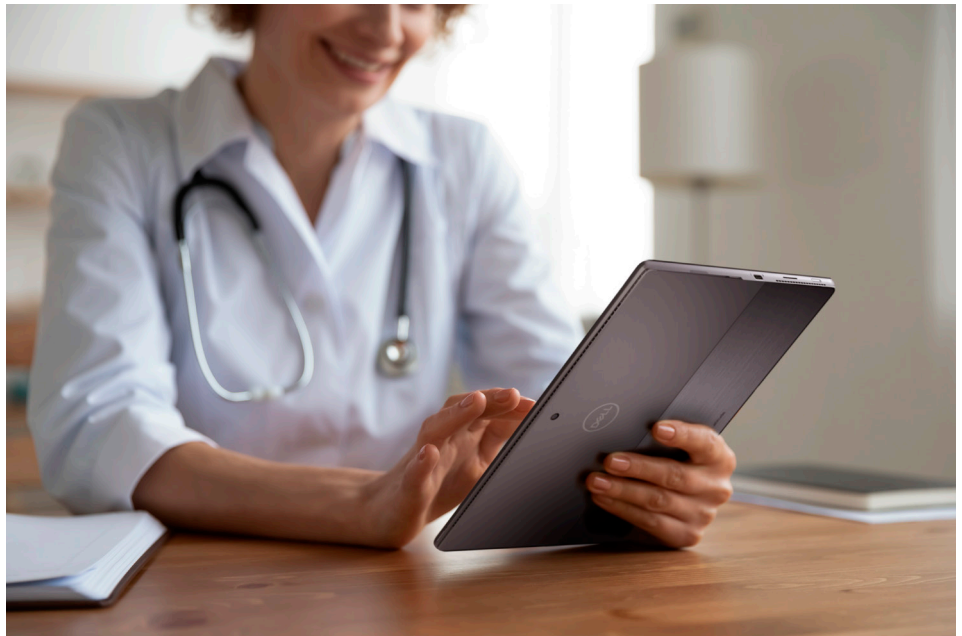
Dell Technologies offers the full breadth of solutions from edge to core to cloud for your MEDITECH deployment.

2

More than 60% of MEDITECH's customers deploy Dell Technologies solutions.¹

3

Our data protection solutions include the Networker NMMEDI module designed specifically for MEDITECH along with PowerProtect DM for enhanced data protection.



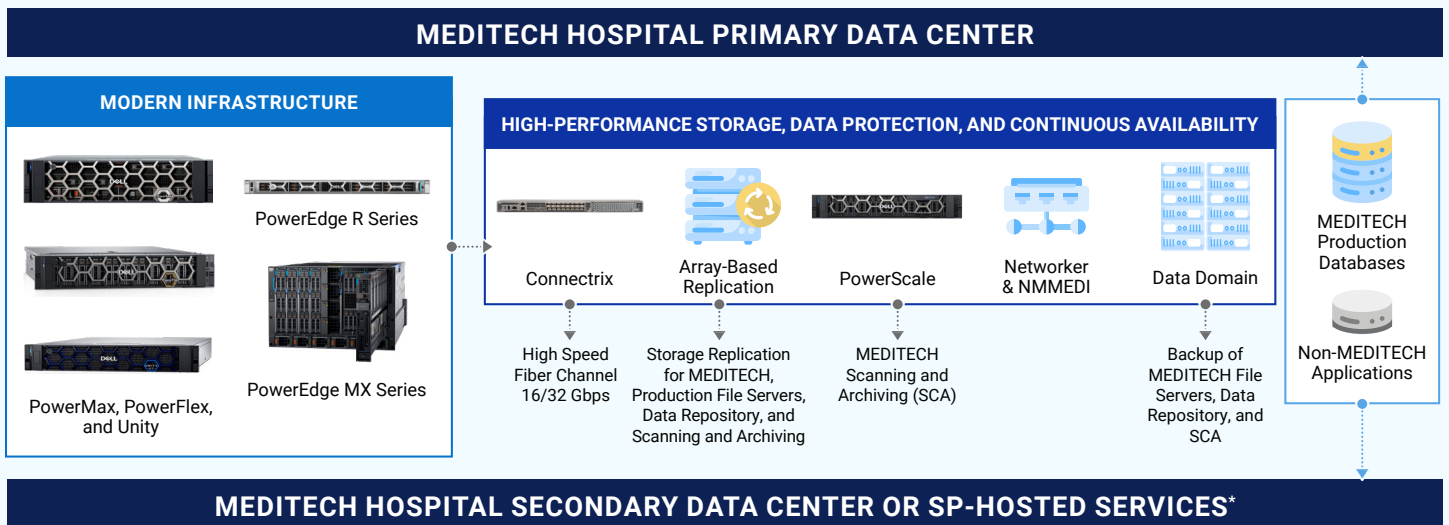
Accelerate EHR Deployment with Dell Technologies

Dell Technologies delivers integrated solutions designed to help healthcare organizations keep pace with digital innovation. Combining industry-leading hardware, software, and end-user devices with deep healthcare expertise and consulting services, Dell empowers your team to achieve seamless, successful MEDITECH EHR deployments.

Our technology aligns with your organization's needs—extending from point of care to core to cloud. This holistic approach addresses critical workflows, management demands, and security challenges, enabling a seamless MEDITECH environment. By leveraging optimized end-user devices, composable infrastructure, advanced management tools, and robust security controls, Dell ensures your organization is equipped to deliver exceptional patient care efficiently and securely.

1. HIMSS Analytics, May 2019.

Figure 1. MEDITECH EHR Reference Architecture



Enhanced EHR Integration for Healthcare Organizations

Whether implementing a new MEDITECH system or optimizing your current platform, consolidating clinical and administrative data is key to enabling instant access to critical patient information anytime, anywhere. Consider these areas crucial for effective EHR integration:

- Workflow:** Streamlining workflows is essential for productive healthcare environments. Rather than a one-size-fits-all approach, health IT must provide tailored tools for healthcare professionals. For example, clinicians using MEDITECH Expanse need real-time, secure access to EHR data as they move between patient rooms and other locations. Alternatively, desk-centric specialists, like radiologists and pathologists, require high-performance desktop systems optimized for advanced image processing and data analysis.
- Management:** Health IT teams face the challenge of delivering consistent, seamless EHR experiences while managing a complex array of devices, applications, and system infrastructures. Dell's solutions simplify ecosystem management and improve technology adoption without compromising efficiency or functionality.
- Security:** Healthcare providers must meet stringent security requirements to protect patient data from increasing cyber threats. By integrating advanced security solutions that address vulnerabilities across connected devices and access points, Dell helps organizations ensure compliance and safeguard sensitive information.

Dell Technologies integrates endpoint devices, clinical workflows, and IT infrastructure to support seamless MEDITECH environments. With cutting-edge technology, robust security, and 24/7 support, Dell empowers healthcare providers to run and manage operations efficiently. By partnering with Dell, organizations can enhance patient care delivery with confidence, transforming healthcare today and for the future.

Modernize Your MEDITECH Environment with Dell

Point of care

Dell offers an extensive portfolio of devices and technologies tailored to MEDITECH Expanse environments, including [Dell OptiPlex workstations](#), [Wyse thin clients](#), [Latitude laptops](#), [Precision systems](#) and more. Predefined configurations optimize workflows based on unique staff needs - including physicians, nurses, technicians, pharmacy staff, researchers, administrative staff, and lab personnel, ensuring the right device for every task.

Enable secure, fast access to patient information with VMware Workspace ONE, creating a Digital Clinical Workspace experience. Features like single sign-on and tap-and-go technology can save clinicians valuable time each shift, boosting productivity and satisfaction.

Core | Data center

Modernize your data center with Dell Technologies IT infrastructure solutions to optimize complex EHR ecosystems, including:

- Compute: High-performance [PowerEdge](#) platforms
- Storage: [PowerMax](#), [PowerFlex](#), [PowerStore](#) and [UnityXT](#) arrays
- Advanced data protection with NetWorker/NMMEDI backups and cyber recovery

Multi-cloud

Dell Technologies offers a broad range of multi-cloud solutions and services for enterprise workloads, from healthcare-specific cloud services and industry-leading software-defined infrastructure to solutions that simplify and accelerate the ability to leverage multiple clouds.

Achieve Optimal MEDITECH Performance with Dell Technologies

Dell Technologies provides the infrastructure needed to enable your organization to achieve optimal performance including:

- 24x7 support
- The latest technologies across the entire infrastructure stack, including compute, storage, networking, and virtualization
- Running MEDITECH Expanse on storage platforms with certified-recommended configurations

Learn more at Dell.com/healthcare and [@DellTechHealth](https://twitter.com/DellTechHealth) | [#TransformHIT](https://hashtage.com/#TransformHIT)