



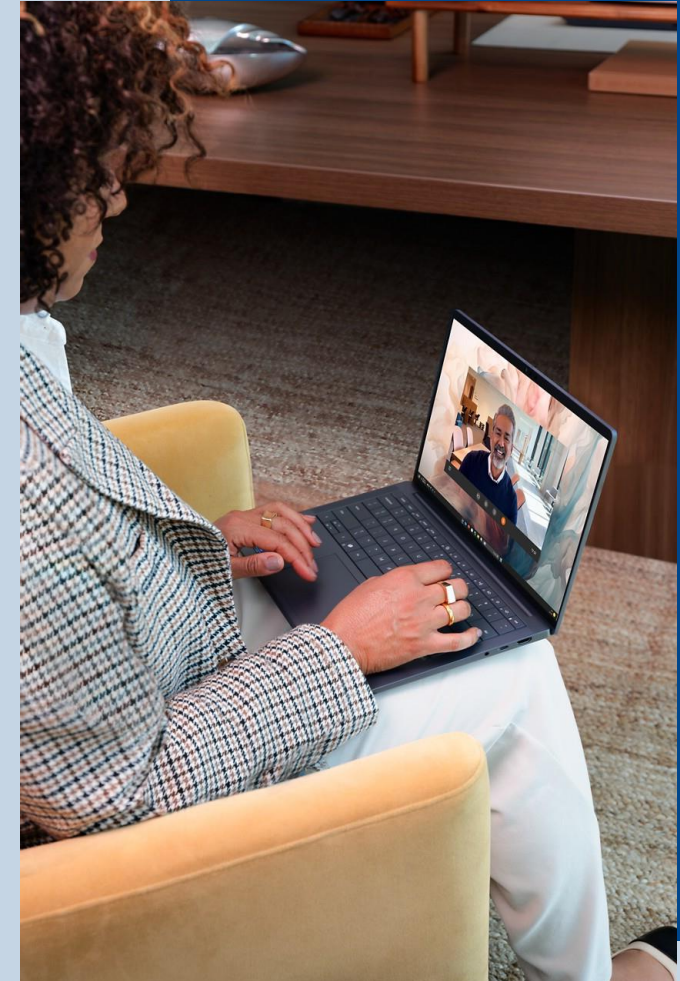
Unleash 40+ TOPS NPU Power

De-risk tomorrow
and upgrade to
Dell Copilot+ PCs.

DELL Technologies

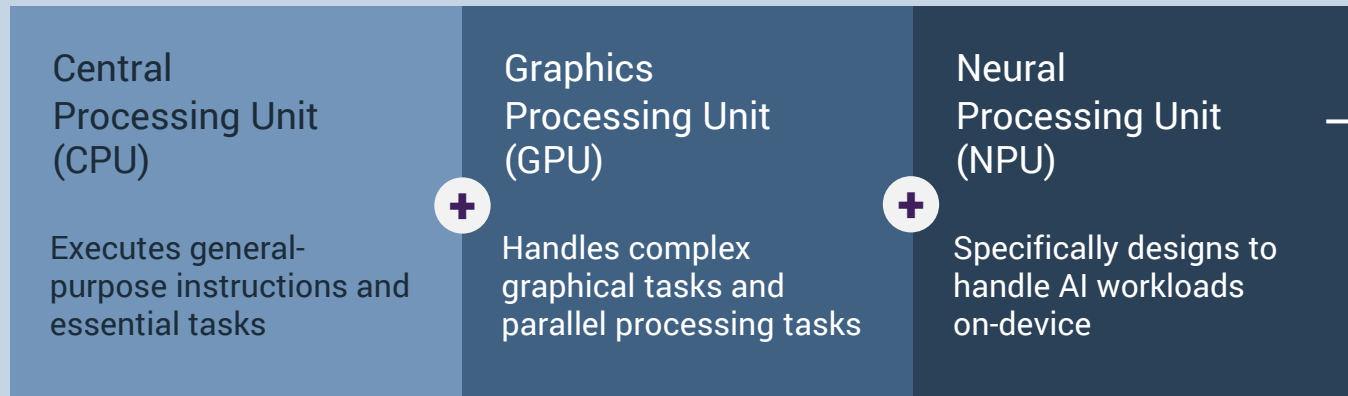
Contents

Defining the terms	Understand the core components and structure of AI PCs.
Scaling AI PC performance	Explore how AI PCs handle tasks from basic AI functions to complex, parallel workloads.
Is your AI PC built to handle AI workloads?	Learn how on-device AI is reshaping the industry and how you can prepare your workforce with the right device
The Dell Copilot+ PC advantage	Learn how on-device AI is reshaping the industry Maximize your AI PC investment and optimize your PC performance to boost your productivity
Power your day with Dell Copilot+ PC cases	Boost your workday with Dell Copilot+ PCs: better performance, efficiency, security, and value.
Dell Copilot+ PC portfolio	Comprehensive portfolio of Copilot+ PCs designed to scale performance with secure and reliable features
Maximize ROI	Discover what free AI inferencing means and how to save on up-front costs
Success Story	AI in Action: See Deloitte's AI Transformation with Copilot + PCs
Take the Next Step	Upgrade Today, Achieve More Tomorrow



The new normal built for AI

New PC Architecture makes an everyday PC – an AI PC



NPU performance is measured in TOPS (Tera Operations Per Second)

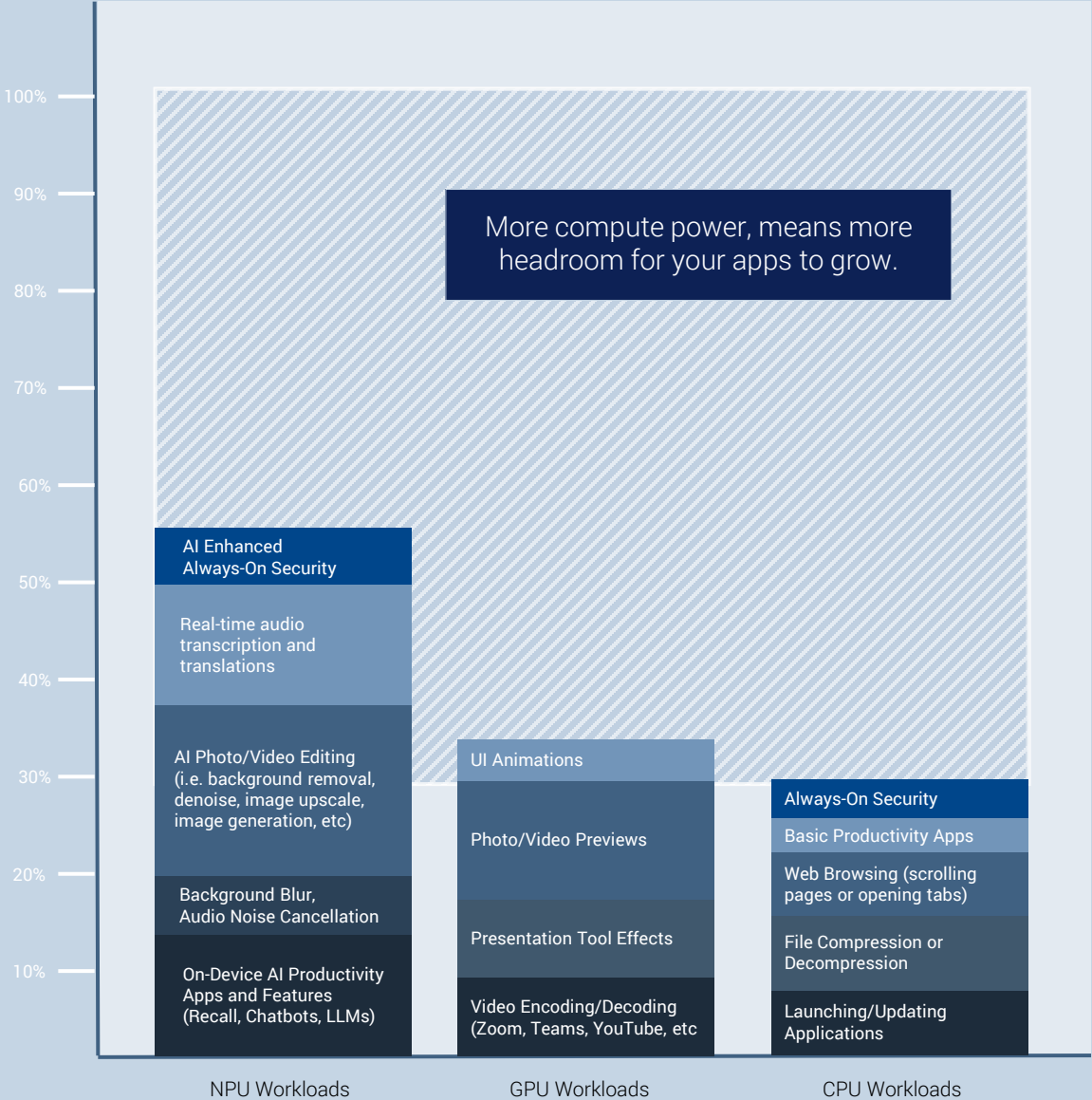
$$\begin{array}{c} \uparrow \\ \text{Higher} \\ \text{TOPS} \end{array} = \begin{array}{c} \uparrow \\ \text{Supports more} \\ \text{Models} \end{array} + \begin{array}{c} \uparrow \\ \text{Faster} \\ \text{Output} \end{array} + \begin{array}{c} \downarrow \\ \text{Lower} \\ \text{Latency} \end{array}$$



More AI-powered applications mean greater demands on computing power.

Some days, the workday feels like a whirlwind. Multiple workstreams, a packed to-do list, and back-to-back meeting invites can leave you juggling tasks across countless tabs and applications.

Dell Copilot+ PCs are built for this kind of multitasking. With smart load-balancing across the CPU, GPU, and NPU, your system handles concurrent tasks effortlessly. Each processing unit handles what it does best, so your PC stays fast, responsive, and ready for whatever your day (or your apps) throw at it, with more headroom to grow.



Scaling AI PC performance

AI PCs aren't one-size-fits-all. The right NPU performance level can make all the difference from lighter NPU TOPS performance to next-gen options offering higher TOPS for advanced capabilities.

AI PCs with Higher TOPS NPUs power have:



Have with greater memory bandwidth and parallel processing units



Enabling seamless execution of larger transformer-based models



Minimize reliance on CPU/GPU fallback for real-time on-device AI

Essential AI PCs

10-16 TOPS

NPU Performance

Basic AI tasks for entry-level AI users

MAX MODEL SIZE:

~1B Parameters

CONCURRENT AI TASKS

1-2

EXAMPLE USE CASES:

- Background blur in video calls
- Voice-to-text
- Security threat detection

Copilot+ PCs

40-50 TOPS

NPU Performance

Peak AI PC performance for everyday knowledge workers and power users

MAX MODEL SIZE:

~7B-13B Parameters

CONCURRENT AI TASKS

4-8

EXAMPLE USE CASES:

- Real-time and offline language translation
- Faster security threat detection
- Video and photo editing and upscaling
- Image generation
- Multimodal summarization
- Running local LLMs

Is your AI PC ready to handle AI workloads for today and tomorrow?

By 2028,
98%

of all PCs shipped will be AI PCs that come with new NPUs that run AI tasks directly on the device¹



The Challenge

Generative AI is transforming productivity, but rising costs, cyber threats, and tech demands challenge progress.



The Solution

On-device AI changes everything. By keeping AI tasks local, you gain control, cut costs, and power through bottlenecks.



The Dell Copilot+ PC Advantage

Dell Copilot+ PCs set the standard with the industry's most secure and manageable commercial AI PCs² backed by the broadest generative AI solutions portfolio, cutting-edge on-device innovation, and global services that scale your AI journey.

Everyday AI experiences in the past
focused on cloud-based AI solutions for the end-user...

Everyday AI experiences moving towards
on-device with hybrid AI workloads today and in the future...

1. Based on IDC Worldwide Artificial Intelligence PC Forecast, 2024-2028, September 2024

2. Most secure is based on Dell internal analysis, October 2024. Applicable to PCs on Intel processors. Not all features available with all PCs. Additional purchase required for some features. Validated by Principled Technologies. A comparison of security features, April 2024. Most-manageable commercial PCs when comparing the systems management capabilities of Dell Update Processes, Dell Manageability Solution capabilities and integrations with 3rd Party Management Solutions, with competitor update processes, systems management solution capabilities and integrations with 3rd party management solutions. 3rd Party Management Solution - Microsoft Intune, is a separate purchase. Based on Dell internal analysis, January 2025.

Take everyday to the next level with Dell Copilot+ PCs

Up to 50 TOPS for NPU performance

- **Exceptional Speed** – Handle data processing, machine learning, and intricate visual rendering effortlessly.
- **Seamless Multitasking** – Run multiple applications without slowing down.

Industry's most secure commercial AI PCs¹

- **Keep Your Organization Safeguarded** – Secure sensitive data and prevent cyberattacks
- **AI-Powered Security** – Advanced security features built into hardware and AI layers

Industry's most manageable commercial AI PCs¹

- **Adapt Seamlessly** – scaling for hybrid workforces or supporting complex IT ecosystems
- **Powerful Designs** – Perfect balance of performance and adaptability to meet complex IT ecosystem challenges

Sustainable Sleek Designs

- **Durable Designs** – 4x more durable for easier repairs²
- **Silent Performance** – Quiet dual-fan system that boosts airflow by 20%³



1. Most secure is based on Dell internal analysis, October 2024. Applicable to PCs on Intel processors. Not all features available with all PCs. Additional purchase required for some features. Validated by Principled Technologies. A comparison of security features, April 2024. Most-manageable commercial PCs when comparing the systems management capabilities of Dell Update Processes, Dell Manageability Solution capabilities and integrations with 3rd Party Management Solutions, with competitor update processes, systems management solution capabilities and integrations with 3rd party management solutions. 3rd Party Management Solution - Microsoft Intune, is a separate purchase. Based on Dell internal analysis, January 2025.

2. Based on internal durability testing performed on Dell Pro 14 (March/May 2025) and HP EliteBook 640 G11 (November 2024).

3. Based on Dell internal test, November 2024.

DELL COPILOT+ PC USE CASES

Ready-to-go Copilot+ PC features

From optimizing video conferencing to powering productivity, Copilot+ PCs are equipped with unique Copilot+ features that save time, remove friction and enhance collaboration empowering every task you handle on your device with the power AI.

See AI PCs in Action

Recall: Just describe what you are looking for and Recall will show you snapshots of the most relevant content in a way that feels like having a photographic memory.

Click To Do: Streamline tasks with Click to Do that analyzes what's on screen, anticipates your next action, and offers shortcuts tailored to your needs

Live Caption: Transcribe and Translate your conversations from 40+ language into English during calls, recordings and streamed content, breaking barriers for global communication.

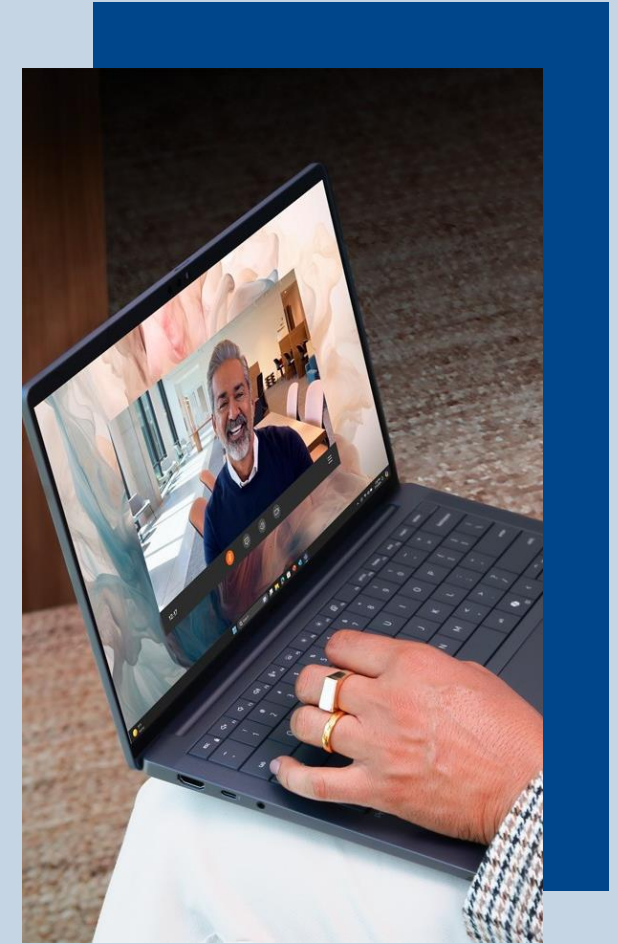
Windows Studio Effects: Look and sound your best with features like portrait lighting, eye contact, background blur and enhanced noise canceling for distraction-free video calls.

Improved Windows Search: Use simple descriptions to locate files, settings, and photos instantly without needing exact names or locations

Dell Copilot+ PCs are

32%

more energy efficient when using select
AI-enhanced collaboration workloads¹



1. Applies to AI-enhanced collaboration on Windows Studio Effect and Teams features including, eye contact correction, standard blur, portrait blur, automatic framing, calls with audio only, virtual background running on devices with Intel® Core™ Ultra 200 K/U/H/HX/S series processor. Based on internal analysis and testing, compared to previous generation Intel® Core™ Ultra processor, February 2025. Results may vary.

DELL COPILOT+ PC USE CASES

Accelerate productivity with local LLMs

Use local LLMs to instantly summarize reports, generate documents, or answer queries on-device, enabling faster workflows, greater efficiency, and secure data handling without cloud dependency.

AI for Productivity

 Anything LLM

See AI PCs in Action

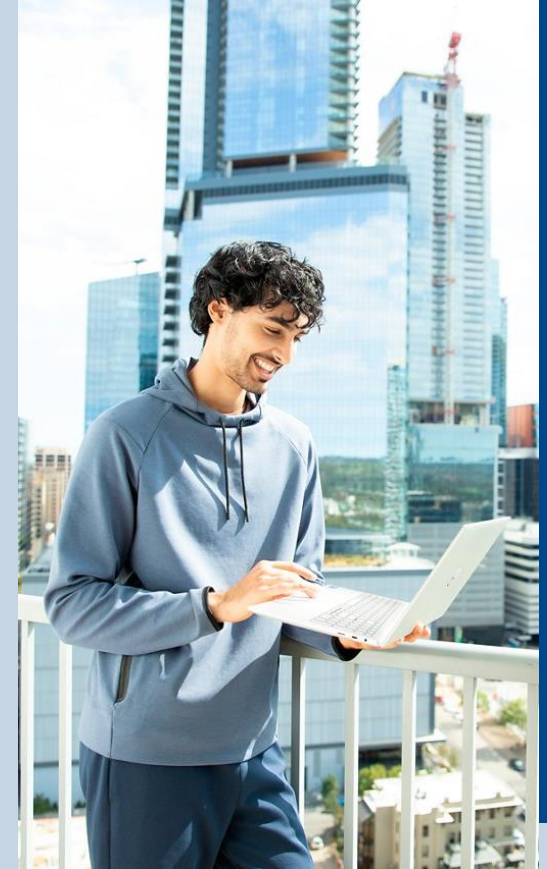
For many business workers, navigating lengthy documents, finding specific information, or drafting content can feel overwhelming and time-consuming. Traditional tools may not always provide the speed or privacy users need, especially when sensitive data is involved.

Imagine opening a dense, 30-page report that needs quick summarization. With a local LLM on your device, you invoke the model. Within a second, it parses the entire document and provides a bullet-point summary, all while working offline. Whether you're tackling Q&A tasks, generating personalized content, or drafting professional reports, the process is instant, intuitive, and secure.

Dell Copilot+ PCs are up to

3x faster

when running widely used large language models.¹



1. Based on LLMWare testing, November 2024 on Dell devices with Intel® Core™ Ultra 200V series processor compared to devices with Mac M3 Max processors. Large Language Models include: llama, llama2, mistral, phi-3, and yi-9b

DELL COPILOT+ PC USE CASES

Always-on security to keep you protected

Local AI models for security applications offer a smarter, faster way to safeguard personal devices. By running advanced, always-on models directly on the device, real-time security features like anomaly detection and AI anti-phishing features work seamlessly in the background, with all processing done offline to protect your data.

AI for Security



See AI PCs in Action

For many organizations, ensuring the security and privacy of employee's devices are critical. Real-time threat detection, user authentication, and tracking unusual patterns often require complex and expensive cloud solutions that can be slow and vulnerable to breaches.

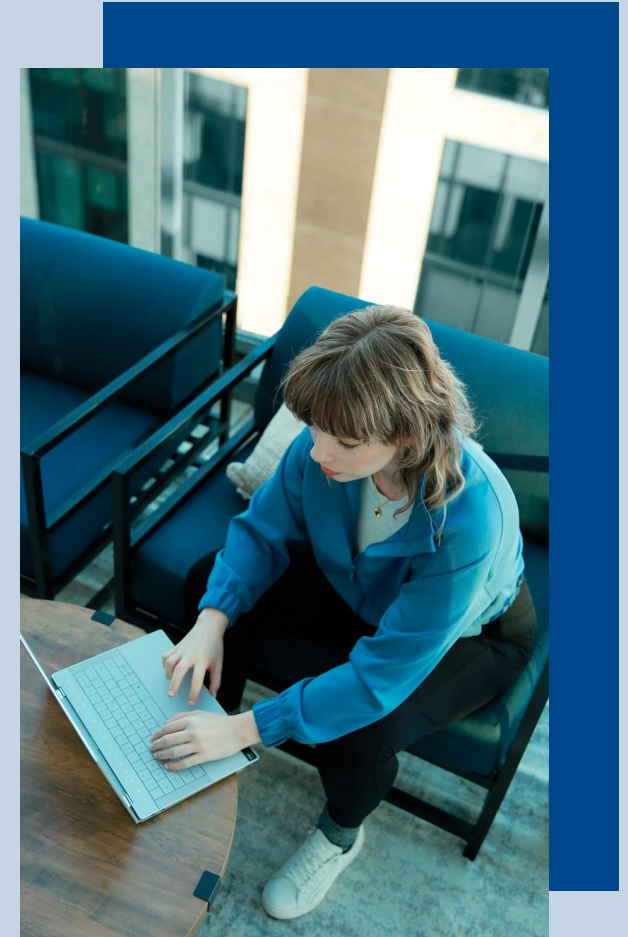
With the New PC Architecture, devices with a built-in Neural Processing Unit (NPU), allow for PCs to continuously monitor for suspicious behavior in real time. With local AI, threat detection, authentication, and anomaly tracking work simultaneously, without compromising speed or reliability. All this happens on your device, meaning your data never leaves your control.

Dell Copilot+ PCs are up to

77%

more energy efficient when leveraging advanced AI-powered security capabilities²

1. Based on internal analysis and testing, May 2025. BUFFERZONE® AI Anti-Phishing and Safe Browsing features running on devices with Intel® Core™ Ultra 200V series processor was compared to previous-generation Intel® Core™ Ultra processors.



DELL COPILOT+ PC USE CASES

Kickstart your creative workflow

Generative AI tools operating locally on personal devices bring effortless creativity into your hands. These tools enable real-time prototyping, content creation, and design rendering, offering lightning-fast results while keeping everything offline for privacy and security.

AI for Creativity

[See AI PCs in Action](#)

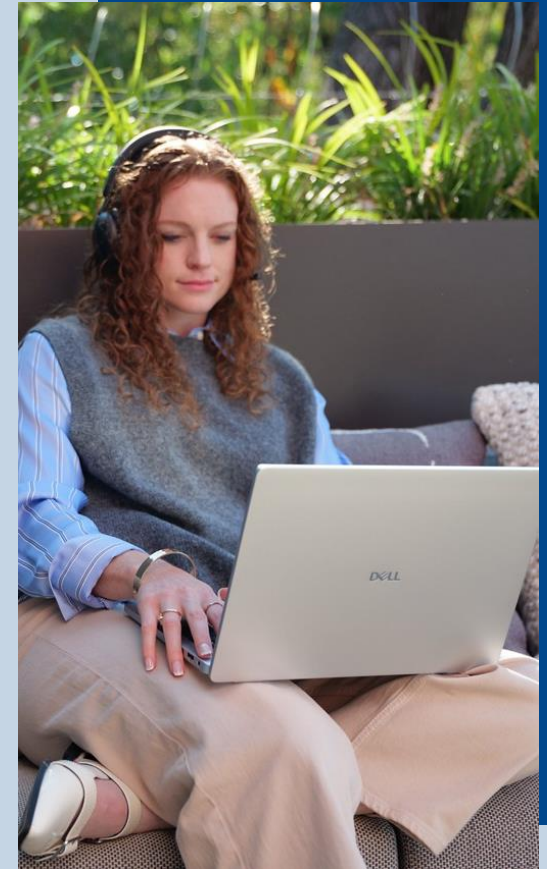
Even the most talented creators face blocks or spend too much time perfecting images or videos. Designing, editing, and creating content can feel overwhelming, especially without expert skills or costly tools. Traditional methods can be slow, complicated, and reliant on internet connections.

With AI, high-quality designs, mockups, edits, or adding effects to videos or refining images, tasks that used to take hours now take seconds. Plus, these AI tools are optimized for your Dell Copilot+ PC to help conserve energy, extending your battery life so you can stay unplugged and creative for longer.

Get up to
2.5x

longer battery life when using select AI video editing features enabled with NPU hardware acceleration³

1. Based on internal analysis and testing, November 2024. Cyberlink's Power Director AI video editing features running on devices with Intel® Core™ Ultra 200V series processors with NPU hardware acceleration enabled compared to Intel® Core™ Ultra 200V series processors without NPU hardware acceleration enabled. Results may vary.

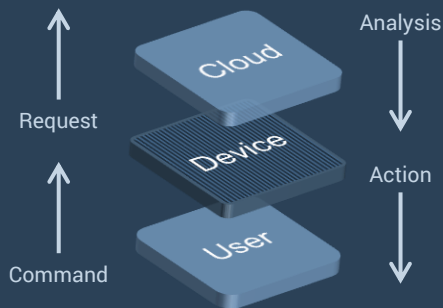


Maximize your ROI with Dell Copilot+ PCs that deliver unmatched performance and free on-device AI inferencing

Free AI inferencing begins on the device

Most organizations deploy entire PC fleets, and as AI tools become standard, every prompt, summarization, or generation task adds recurring cloud costs. AI PCs handle these tasks locally, cutting cloud expenses.

AI inferencing in the cloud



Costs are incurred everytime an app is used when sending a request from an interaction

AI inferencing on-device



Applications leverages dedicated AI engine to run AI model locally without incurring any cloud costs

+4 hours battery life

Stay unplugged up to 41% longer – perfect for when you're on-the-go¹

80% more energy efficient

Devices run efficiently when utilizing AI-driven tools that boost productivity & streamline tasks²

78% better graphics performance

With a more balanced workload distribution, you get performance for video conferencing, creative, and visual workflows¹

The right device, for the right workflow

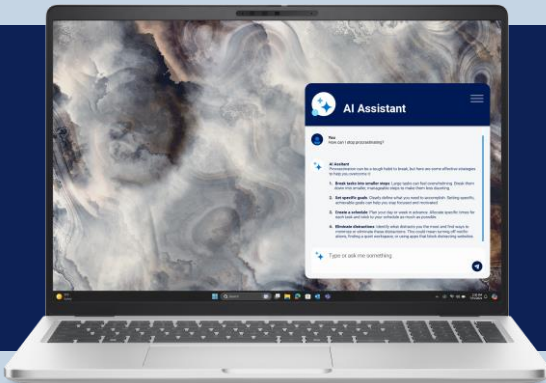
Dell Pro

Delivers essential performance for everyday productivity



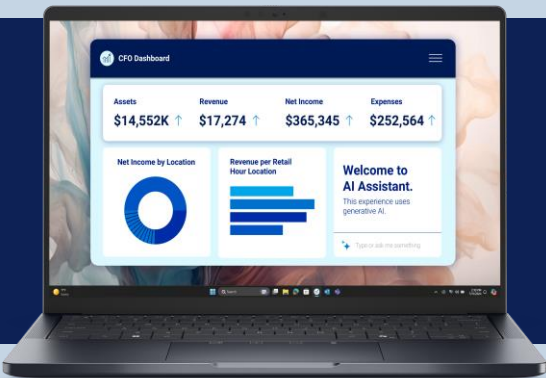
Dell Pro Plus

World's most scalable mainstream business laptop meets the needs of every type of worker¹



Dell Pro Premium

Sleek, lightweight yet powerful laptop for performance and portability on the go with up to 21.2 hours of battery life²



Dell Pro Max

Designed for applications requiring performance, for power users and entry design applications



1. Based on Dell internal test, November 2024.
2. Refers to the Dell Pro 14 Premium. Based on testing using the Mobile Mark 2025 battery life benchmark test in December 2024. For more information about this benchmark test, visit www.bapco.com. Actual battery life may be significantly less than the test results and varies depending on product configuration and use, software, usage, operating conditions, power management settings and other factors. Maximum battery life will decrease with time.

Deloitte's AI Transformation

Deloitte's needed a way to amplify developer efficiency by leveraging tools that enhance productivity and performance. They needed a solution that avoided the common pitfalls of cloud-based systems, such as availability issues, latency, security risks, and high costs, while enabling developers to focus on high-impact tasks instead of routine, time-consuming processes.

Business Results:

50%

faster processing
time for routine tasks

Reduced errors and
vulnerability of
proprietary data

Always-on AI
experiences even
without internet

Increases
productivity, speed
and cost efficiency.

[Click Here for More
Success Stories](#)

“

Partnering with Dell Technologies, we found that our visions matched perfectly. Working with a forward-thinking partner made the collaboration a very positive experience.”

Baris Sarer, Principal,
Deloitte Consulting LLP

”

The right device builds a stronger workforce

Don't wait to modernize your work experience.

Get expert guidance on features, NPU utilization, implementation with [Dell Accelerator Services for Copilot+ PCs](#)

Fast-track AI transformation with predictable, monthly pricing with [Dell APEX PC as a Service](#)

Shop our products on
Dell.com/ShopPCs

Discover the benefits of Dell Copilot+ PCs on
Dell.com/Learn-about-AI-PCs