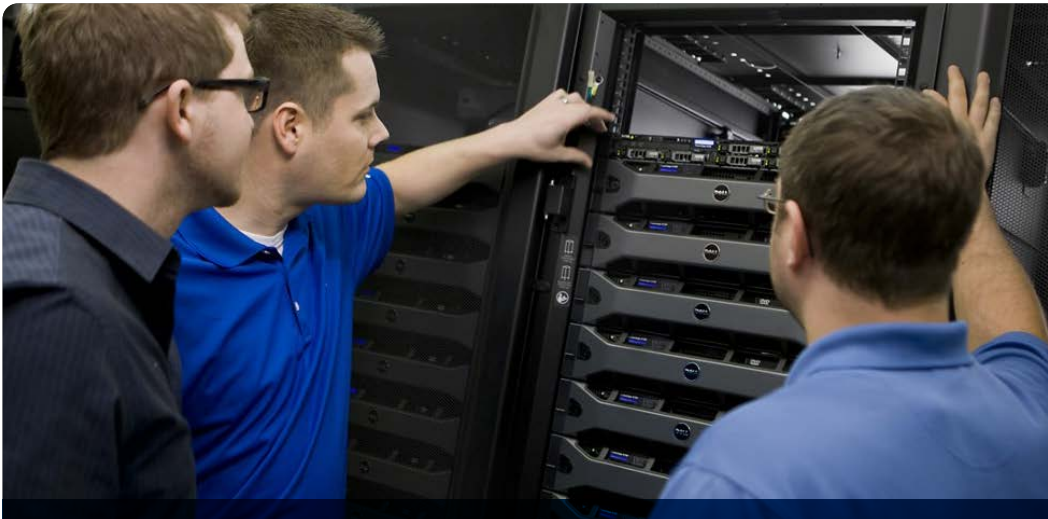


# Put PowerEdge to work faster



Save up to

**127** hrs

On 100 servers<sup>1</sup>

## ProDeploy Infrastructure Suite

### Accelerate your IT modernization with versatile server deployment services

It's time to refresh with the latest technology, but when you're deploying a large amount of computing power in a short amount of time, resources can get stretched thin, and let's face it, consistency can suffer. Put PowerEdge to work faster, by receiving new servers configured, or deployed at your location - however best fits your business need.

Best practices, refined over 35 years, deliver computing power in a wide variety of methods that fit the need of your organization. From one server to thousands, we have you covered.

### The ProDeploy Infrastructure Suite delivers broad versatility:

**ProDeploy Factory Configuration** – Factory-based services deliver PowerEdge servers ready to install saving in-house admins up to 127 hours per 100 servers deployed.

**ProDeploy Rack Integration** - Receive PowerEdge fully configured and racked direct from our facility with optional onsite final configuration.

**ProDeploy or ProDeploy Plus** - ProDeploy experts are here to help, with 24/7 field-based deployment services, from planning through implementation and beyond. Choose from guided remote to fully onsite hardware and software implementation.

**Basic Deployment** – Onsite hardware installation with package removal.

### Key Benefits

- Versatile delivery options to fit every budget and operating model.
- Consistency in quality from factory to field deployment.
- Configuration dependability, over time and at every location
- Maximize performance from fully enabled hardware and software

## Versatile choices for hardware and software deployment

Deploying new rack servers, tower servers, modular infrastructure or ready nodes, require dozens of different steps and potentially hundreds of configuration options. Rely on Dell experts to help you plan, configure, and verify the deployment so you can focus on your business. These choices provide the same great service across your choices of OS or Hypervisor without additional costs.

All delivery options include a <b>single point of contact</b> for project management	FACTORY		FIELD			
	ProDeploy Factory Configuration	ProDeploy Rack Integration	Basic Deployment	ProDeploy		ProDeploy Plus
Hardware installation and cabling	-	•	Onsite	Guided	Onsite	Onsite
Asset tagging and reporting	•	•				
RAID, BIOS and iDRAC configuration	Factory	•	-	Remote	Remote	Onsite
OS/Hypervisor installation and configuration	Factory image	•	-	Remote	Remote	Onsite
Install support software and connect with Dell Technologies	-	-	-	•	•	•
Online collaborative environment for requirements gathering and status tracking	-	•	-	•	•	•

Factory Deployment	Factory Deployment (includes RI Onsite Final Config)
<ul style="list-style-type: none"> <li>• BIOS settings</li> <li>• RAID configuration</li> <li>• Driver installs</li> <li>• Firmware freeze/upgrade</li> <li>• iDRAC configuration</li> <li>• IP Address configuration</li> <li>• Apply customer-provided System image</li> </ul>	Everything included in factory deployment, PLUS: <ul style="list-style-type: none"> <li>• Install &amp; configure OS or Hypervisor (Windows, Linux, vSphere)</li> <li>• Install &amp; configure Dell Systems Management (SupportAssist, CloudIQ, OME, OMSA)</li> <li>• VMware cluster creation</li> <li>• Install &amp; configure hypervisor manager</li> <li>• Connect host to SAN</li> </ul>

## Follow your deployment online

Fully integrated with Dell support and system management software: TechDirect | OpenManage Enterprise (OME) | OpenManage Server Administrator (OMSA) | Repository Manager | Cloud IQ | SupportAssist.

Collaborate with our experts online to plan, track and document your deployment projects with an end-to-end management portal. Save time by centralizing communication across joint teams. Once your new technology is in production, use TechDirect to boost productivity with self-service for support and parts dispatch.

For more information, please contact your Dell representative or visit [Dell.com/Prodeploy](https://Dell.com/Prodeploy)

<sup>1</sup>Based on a September 2020 Principled Technologies Test Report commissioned by Dell Technologies comparing in-house deployment vs. Dell ProDeploy for Enterprise deployment service for Dell PowerEdge R740 servers, Dell Unity Storage array and Dell PowerSwitch S4048-ON. Actual results will vary. Full report: <http://facts.pt/JPIIIWm>

Copyright © 2022 Dell Inc. or its subsidiaries. All Rights Reserved Dell, and other trademarks are trademarks of Dell Inc. or its subsidiaries. Other trademarks may be trademarks of their respective owners. Dell believes the information in this document is accurate as of its publication date. The information is subject to change without notice. November 2022-LC | ProDeploy Infrastructure for PowerEdge data sheet global