

DELL Technologies



Small, light 14" workstation
designed for Power Users.

Precision 3480

Work anywhere with a small, yet powerful workstation.

The lightest of the 3000 Series, the 3480 is a 14-inch ultra-mobile workstation that is great for multi-tasking across collaboration, business, and office applications.

Manual Privacy Shutter, Express Sign-in 2.0

Up to FHD IR camera with AI-based proximity sensors, Express Sign-in 2.0, intelligent noise cancellation and a manual privacy shutter.

Advanced thermal management, with Dual Opposing Output (DOO) fan and User Selectable Thermal Tables

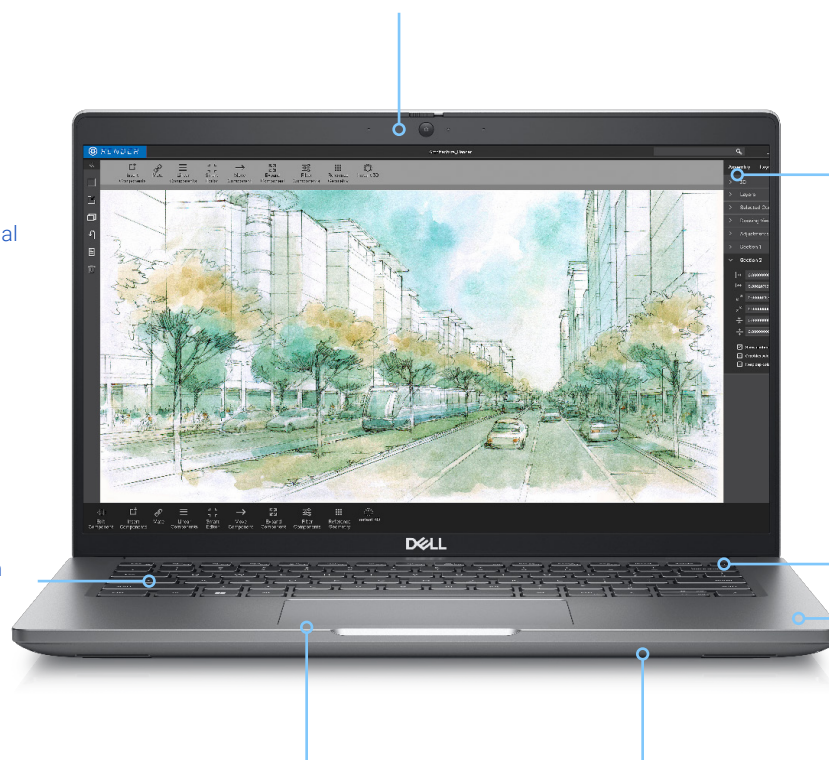
Starting weight is 3.06lbs/ 1.39kg

Pro2 ID keyboard with backlit optional

4G LTE, 5G FirstNet Certified
WiFi 6E, 4G LTE, 5G LTE with FirstNet Certification, Bluetooth 5.3

Intelligent performance

Latest professional grade components with Intel Core U i5-i7 (15W) or Core P i5-i7 (28W), 10-14 cores with vPro options, NVIDIA RTX A500 (4GB) graphics, Gen4 M.2 SSD (up to 2TB), up to 64GB of 4800 MT/s DDR5 memory (no ECC options)



Up to FHD, 100% sRGB, 400nits, PremierColor. Touch and ComfortView Plus optional. Low-blue-light (LBL) and super low power (SLP).

Optional Finger Reader, integrated with power button
Windows Hello capable

Titan Gray

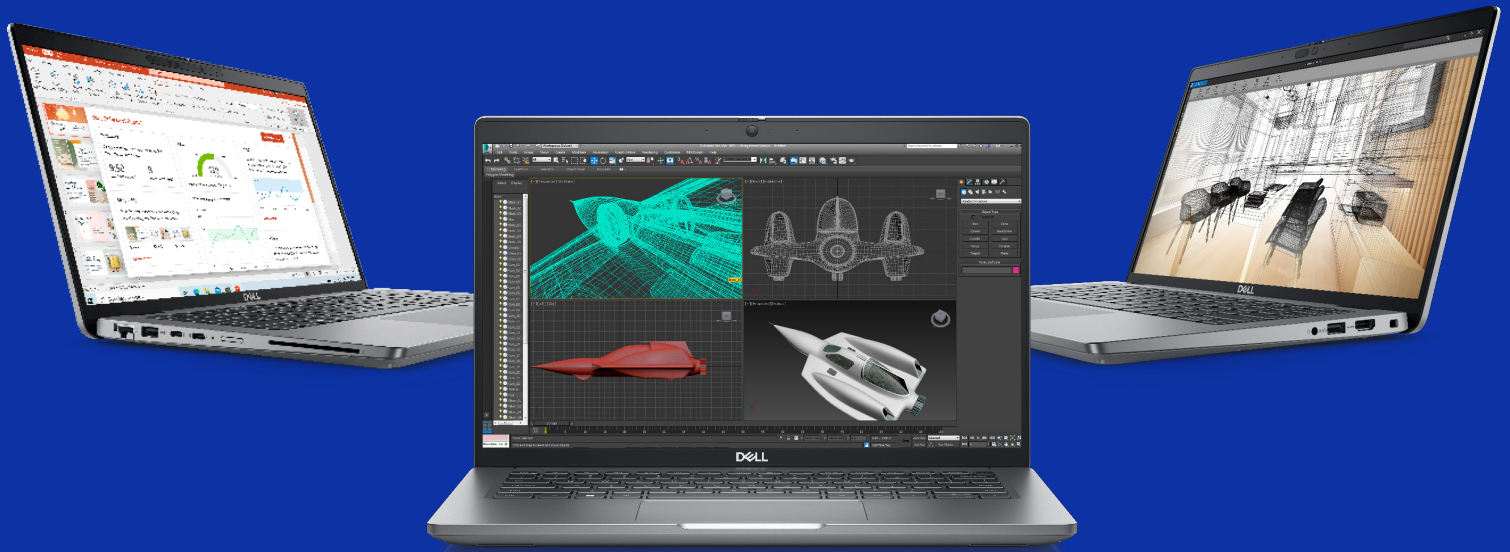
Large glass-like, multi-touch clickpad

Up to 3-cell 54Whr battery, Long Life Cycle, ExpressCharge

Wide variety of ports and input connections: (2) Thunderbolt 4 Type C, (2) USB-A 3.2

Gen 1 (1x power enabled), HDMI 2.0, RJ-45, Headset, Smart Card (optional), Fingerprint reader (optional).

ExpressCharge charges 80% in 1 hour+, charging 35% in 20 min++



Mission critical reliability and Security

Independent Software Vendor (ISV) Certified
This provides peace of mind knowing that Dell works with many independent software vendors (ISVs) to provide an exceptional, seamless user experience. To Dell, it means hundreds of engineering man-hours and rigorous testing that have been poured into Dell Precision™ workstations to optimize performance and reliability with leading industry applications.

For a full list of ISV certifications, click here
<http://precisionworkstations.com/software-certification-lookup>

Tested to US military specifications to guarantee durability (MIL-STD tested)

FIPS certified fingerprint and smartcard readers (optional)

Intelligent privacy and enhanced contextual privacy through camera



Advanced productivity

Exceptional battery life helps keep you productive, while ExpressCharge and ExpressCharge Boost gets you recharged quickly.

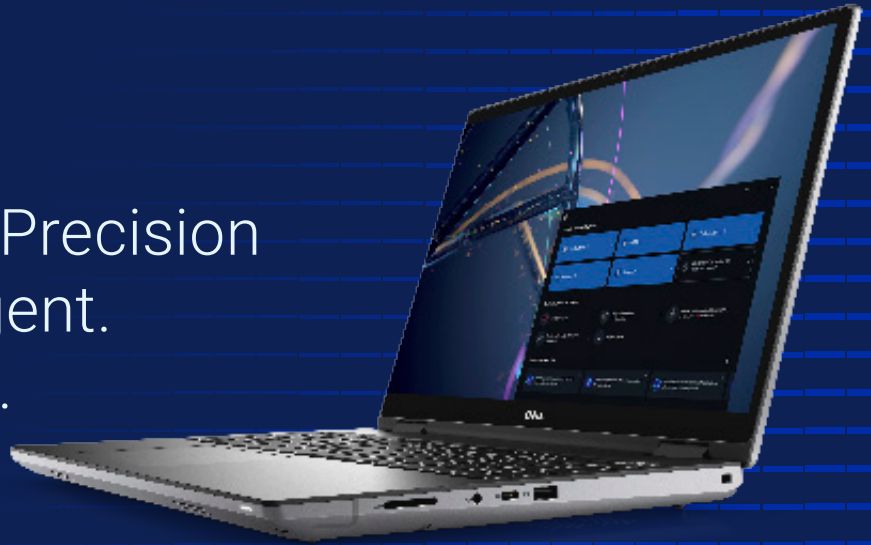
4G LTE and 5G WWAN FirstNet Certified

WiFi 6E, 4G LTE, 5G LTE with FirstNet Certification, Bluetooth 5.3 for flexible connectivity options.

Dell Optimizer for Precision

We make it intelligent.

You make it yours.



In a work-from-anywhere world, powering the world's most intelligent business PCs* is not enough, Dell Optimizer is extending personalized intelligence to the rest of the Dell ecosystem.

Dell Optimizer lets you accomplish anything with built-in intelligence that learns and adapts to the way you work.

Power your productivity with personalized performance extending from your Precision to the devices within your workspace.



An intelligent ecosystem

Enjoy easy pairing and management of your Dell monitors and accessories with the integration of Dell Display Manager and Dell Peripheral Manager.



Intelligent privacy anywhere

This technology lets you texturizes your screen when an intruder is detected and dims your PC when you look away. It also wakes your PC when your approach and locks it when you walk away.



Up level audio

Intelligent Audio delivers sound and mic enhancements reducing background noise using neural noise cancellation and voice isolation technology.



Intelligent analytics

Get full workload analysis to enable users to track system resource utilization for components such as processor, memory, graphics, and hard drive while you run your specific workload.



Unmatched connectivity

ExpressConnect* provides the world's first simultaneous multinet network connection* that joins the best network* available.



Extended power

ExpressCharge analyzes your power usage habits to improve PC battery utilization and extends run times by charging your system faster when you need a boost in power.



Improved app performance

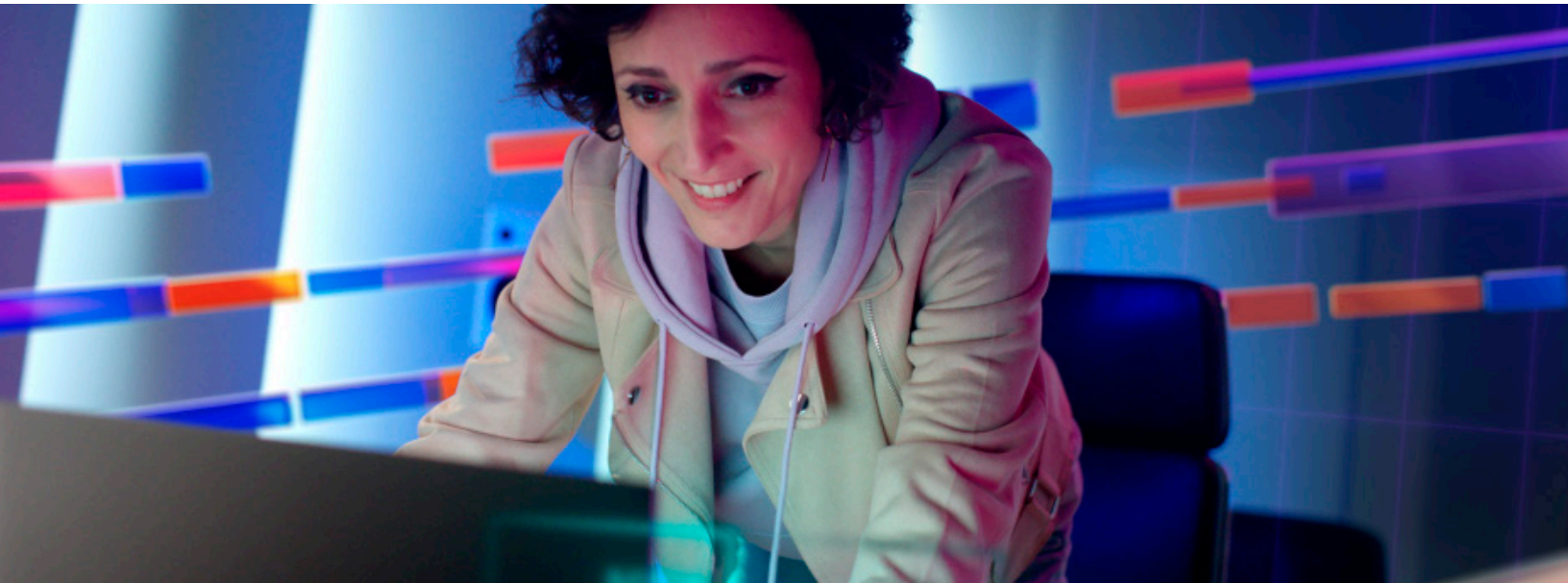
ExpressResponse analyzes how you use your preferred apps to boost performance.

With Dell Optimizer, optimization and data collection follow a stringent process to ensure your privacy and security.

Click here to learn more about Dell Optimizer.

Dell Optimizer features vary per PC model and platform. Please refer to the **Availability Matrix** for more details.

* Based on Dell Analysis. October 2022. For more details visit Guide to Bluetooth Security <https://nvlpubs.nist.gov/nistpubs/SpecialPublications/NIST.SP.800-121r2-upd1.pdf> Dell Pair is available on select Dell accessories.



Mobile Workstation Solution



UltraSharp 34 Curved Monitor USB-C Hub - U3423WE

Experience immersive brilliant color, remarkable details and spectacular contrast on the world's first 34" curved WQHD monitor with IPS Black panel technology. Enhance productivity and multitasking with RJ45, USB-C and super speed 10Gbps connectivity.



Dell Thunderbolt™ 4 Dock - WD22TB4

Experience lightning fast charging and Thunderbolt™ 4 connectivity with this flexible and powerful modular dock.



Dell Pro Wireless Keyboard and Mouse - KM5221W

Enhance your everyday productivity with a quiet full-size keyboard and mouse combo that offers programmable shortcuts and 36 months battery life.³⁸



Dell EcoLoop Pro Briefcase - CP5623

Designed for on-the-go productivity and protection, the Dell EcoLoop Pro Briefcase is made of eco-conscious material to complement any lifestyle.



Dell Pro Wireless Headset - WL5022

Work from anywhere with this Bluetooth Teams certified headset that lets you switch seamlessly to your PC or smartphone and enjoy crystal clear audio on the go.



Dell Pro Webcam - WB5023

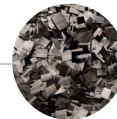
Professional 2K QHD webcam with outstanding video quality and picture clarity, certified for Microsoft Teams and Zoom.

Sustainability on Dell Precision 3480

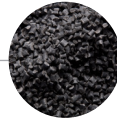
Delivering innovative technology and solutions to reduce our environmental impact, for ourselves and our customers.

Sustainable Materials

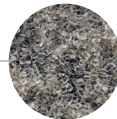
Our use of sustainable materials helps reduce the environmental impact of making and recycling them.+



• 20% carbon fiber in the lid of the product



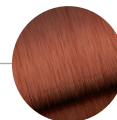
• Recycled plastics in multiple locations of the product**



• 28% ocean bound plastic in fan-housing



• Tall oil-based plastic in the lid (21%), castor oil-based rubber in the feet of the product (42%)



• 50% recycled copper in AC adapter cable

**90% recycled plastics in AC adapter exterior, 50% PCR [palm rest, inner frame, bezel, battery frame], 35% PCR [SSD frame], 30% PCR [lid, speaker housing, LCD cover antenna window]

Packaging Innovation

Ships in new enhanced 100% recycled or renewable packaging that is also 100% recyclable.*** Multipack shipping available on eligible products.

Recycle

Securely and responsibly retire your IT equipment with Dell regardless of brand, in support of a circular economy. Learn more at Dell.com/Recycle

Ecolabels

Eco-labeling standards drive sustainability further by helping customers understand electronic products and the companies that make them. This product meets the following standards:



See how we are reducing the impact of our products and solutions Dell.com/Sustainable-Devices

FEATURE	TECHNICAL SPECIFICATION
MODEL NUMBER¹	Precision 3480
PROCESSOR OPTIONS¹	13 th Generation Intel® Core™ i5-1335U, Intel® vPro® Essentials, 12 MB cache, 10 cores, up to 4.6 GHz 13 th Generation Intel® Core™ i7-1355U, Intel® vPro® Essentials, 12 MB cache, 10 cores, up to 5.0 GHz 13 th Generation Intel® Core™ i5-1340P, Intel® vPro® Essentials, 12 MB cache, 12 cores, up to 4.6 GHz 13 th Generation Intel® Core™ i5-1350P, Intel® vPro® Enterprise, 12 MB cache, 12 cores, up to 4.7 GHz 13 th Generation Intel® Core™ i7-1360P, 18 MB cache, 12 cores, up to 5.0 GHz 13 th Generation Intel® Core™ i7-1370P, Intel® vPro® Enterprise, 24 MB cache, 14 cores, up to 5.2 GHz
OPERATING SYSTEM¹	Windows 11 Home, 64-bit, Windows 10 downgrade capable Windows 11 Pro, 64-bit Windows 10 China G-SKU, 64-bit Ubuntu® 22.04 LTS, 64-bit
MEMORY OPTIONS^{1,2,3}	8 GB, 1 x 8 GB, DDR4, 3200 MT/s, single-channel 16 GB, 2 x 8 GB, DDR4, 3200 MT/s, dual-channel 16 GB, 1 x 16 GB, DDR4, 3200 MT/s, single-channel 32 GB, 2 x 16 GB, DDR4, 3200 MT/s, dual-channel 64 GB, 2 x 32 GB, DDR4, 3200 MT/s, dual-channel 8 GB, 1 x 8 GB, DDR5, 4800 MT/s, single-channel 16 GB, 2 x 8 GB, DDR5, 4800 MT/s, dual-channel 16 GB, 1 x 16 GB, DDR5, 4800 MT/s, single-channel 32 GB, 2 x 16 GB, DDR5, 4800 MT/s, dual-channel 64 GB, 2 x 32 GB, DDR5, 4800 MT/s, dual-channel 8 GB, 1 x 8 GB, DDR5, 5200 MT/s, single-channel 16 GB, 2 x 8 GB, DDR5, 5200 MT/s, dual-channel 16 GB, 1 x 16 GB, DDR5, 5200 MT/s, single-channel 32 GB, 2 x 16 GB, DDR5, 5200 MT/s, dual-channel 64 GB, 2 x 32 GB, DDR5, 5200 MT/s, dual-channel
PRIMARY HARD DISK DRIVE^{1,5}	M.2 2230, 256 GB, PCIe NVMe Gen4 x4, SSD, Class 35 M.2 2230, 512 GB, PCIe NVMe Gen4 x4, SSD, Class 35 M.2 2230, 1 TB, PCIe NVMe Gen4 x4, SSD, Class 35 M.2 2230, 2 TB, PCIe NVMe Gen4 x4, SSD, Class 25 M.2 2230, 256 GB, PCIe NVMe Gen4 x4, SED, Class 35
VIDEO CARD	Intel® Iris® Xe Graphics with dual-channel memory configuration NVIDIA® RTX A500, 4 GB GDDR6
DISPLAY	14-inch, FHD 1920 x 1080, 60 Hz, anti-glare, non-touch, 45% NTSC, 250 nits, IPS 14-inch, FHD 1920 x 1080, 60 Hz, anti-glare, touch, 72% NTSC, 300 nits, IPS 14-inch, FHD 1920 x 1080, 60 Hz, anti-glare, non-touch, 100% sRGB, 400 nits, IPS, Low Blue Light, Super Low Power
CASE COLOR	Titan Gray
PRODUCTIVITY SW¹	Dell Command Update (DCU) Dell Digital Deliver - Cirrus Client Excalibur Dell Optimizer MS Office MS Office - single language MS Office Home Business Non-Premium (Japan) MS Office Personal Non-Premium (Japan) MS Office Pro Non-Premium (Japan) Support Assist
SECURITY SW	McAfee Generic Build 30-day Commercial McAfee Generic Build 30-day Commercial JPN
WARRANTY	1-year hardware warranty with on-site/in-home service after remote diagnosis 2-year hardware warranty with on-site/in-home service after remote diagnosis 3-year hardware warranty with on-site/in-home service after remote diagnosis 4-year hardware warranty with on-site/in-home service after remote diagnosis 5-year hardware warranty with on-site/in-home service after remote diagnosis 1-year ProSupport Suite 2-year ProSupport Suite 3-year ProSupport Suite 4-year ProSupport Suite 5-year ProSupport Suite 2-year Data and Protective Services Extended Battery Services (EBS) - FRU Batteries Only 3-year Data and Protective Services Extended Battery Services (EBS) - FRU Batteries Only
ACCIDENTAL DAMAGE SERVICES	1-year Accidental Damage Service 2-year Accidental Damage Service 3-year Accidental Damage Service 4-year Accidental Damage Service 5-year Accidental Damage Service 1-year Accidental Damage Service with Theft Service 2-year Accidental Damage Service with Theft Service 3-year Accidental Damage Service with Theft Service 4-year Accidental Damage Service with Theft Service 5-year Accidental Damage Service with Theft Service 1-year Accidental Damage Protection 2-year Accidental Damage Protection 3-year Accidental Damage Protection 4-year Accidental Damage Protection 5-year Accidental Damage Protection

FEATURE	TECHNICAL SPECIFICATION
MODEL NUMBER¹	Precision 3480
KEYBOARD¹	<p>English US, Standard, non-backlit keyboard, 79 keys Brazilian, Standard, non-backlit keyboard, 80 keys Spanish, Standard, non-backlit keyboard, 80 keys Arabic, Standard, backlit keyboard, 79 keys Canada bilingual (MUI), Standard, backlit keyboard, 79 keys Chinese traditional, Standard, backlit keyboard, 79 keys English US, Standard, backlit keyboard, 79 keys French-Canadian, Standard, backlit keyboard, 79 keys Greek, Standard, backlit keyboard, 79 keys Hebrew, Standard, backlit keyboard, 79 keys Korean, Standard, backlit keyboard, 79 keys Russian, Standard, backlit keyboard, 79 keys Thai, Standard, backlit keyboard, 79 keys Ukrainian, Standard, backlit keyboard, 79 keys Japanese, Standard, backlit keyboard, 83 keys Brazilian, Standard, backlit keyboard, 80 keys Belgian, Standard, backlit keyboard, 80 keys Bulgarian, Standard, backlit keyboard, 80 keys Czech & Slovakian (MUI), Standard, backlit keyboard, 80 keys Danish, Standard, backlit keyboard, 80 keys English UK, Standard, backlit keyboard, 80 keys Estonian, Standard, backlit keyboard, 80 keys French European, Standard, backlit keyboard, 80 keys German, Standard, backlit keyboard, 80 keys Hungarian, Standard, backlit keyboard, 80 keys Icelandic, Standard, backlit keyboard, 80 keys Italian, Standard, backlit keyboard, 80 keys Nordic (MUI), Standard, backlit keyboard, 80 keys Norwegian, Standard, backlit keyboard, 80 keys Portuguese Iberian, Standard, backlit keyboard, 80 keys Slovenian, Standard, backlit keyboard, 80 keys Spanish (Castilian), Standard, backlit keyboard, 80 keys Spanish (Latin America), Standard, backlit keyboard, 80 keys Swedish/Finnish, Standard, backlit keyboard, 80 keys Swiss European (MUI), Standard, backlit keyboard, 80 keys Turkish, Standard, backlit keyboard, 80 keys Turkish F, Standard, backlit keyboard, 80 keys English International, Standard, non-backlit keyboard, 79 keys English International, Standard, backlit keyboard, 79 keys Japanese, Standard, non-backlit keyboard, 83 keys French-Canadian Quebec, Standard, non-backlit keyboard, 80 keys Keyboards are spill resistant.</p>
PORTS	<p>(2) Thunderbolt™ 4 ports with DisplayPort™ Alt Mode/USB Type-C/USB4/Power Delivery USB 3.2 Gen 1 port with PowerShare USB 3.2 Gen 1 port HDMI 2.0 port Universal audio port RJ45 Ethernet port</p>
SLOTS	<p>Wedge shaped lock slot Smart card reader slot (optional) Nano-SIM card slot (optional)</p>
DIMENSIONS	<p>US Height (rear): 0.83 in. (21.04 mm) Height (front): 0.75 in. (19.06 mm) Width: 12.65 in. (321.35 mm) Depth: 8.35 in. (212 mm) Starting weight: 3.06 lb (1.39 kg)</p> <p>Rest of the world Height (rear): 21.04 mm (0.83 in.) Height (front): 19.06 mm (0.75 in.) Width: 321.35 mm (12.65 in.) Depth: 212 mm (8.35 in.) Starting weight: 1.39 kg (3.06 lb)</p>
CAMERA	<p>1080p at 30 fps, widescreen FHD RGB camera, Dual-array microphones 1080p at 30 fps, widescreen FHD RGB + IR camera, Dual-array microphones 1080p at 30 fps, widescreen FHD RGB + IR camera, Dual-array microphones, Ambient light sensor, Express Sign-In with Presence Detection and Intelligent Privacy</p>
AUDIO	Stereo speakers with Realtek Waves, MaxxAudio® 12.0, 2 W x 2 W = 4 W total
WIRELESS	<p>WLAN: Realtek RTL8852BE, 2x2 MIMO, 1201 Mbps, 2.4/5 GHz, Wi-Fi 6 (WiFi 802.11ax), Bluetooth 5.3 Intel® AX211, 2x2 MIMO, 2400 Mbps, 2.4/5/6 GHz, Wi-Fi 6E (6 if 6E unavailable) (WiFi 802.11ax), Bluetooth 5.3</p> <p>WWAN: 4G Intel XMM 7560R Global LTE-Advanced Pro Intel 5000 Global 5G Modem, FirstNet Certified</p>
PRIMARY BATTERY	<p>3-cell, 42 Wh, ExpressCharge™ Boost 3-cell, 42 Wh, Long Cycle Life, ExpressCharge™, 3-year warranty 3-cell, 54 Wh, ExpressCharge™ Boost 3-cell, 54 Wh, Long Cycle Life, ExpressCharge™, 3-year warranty</p>

FEATURE	TECHNICAL SPECIFICATION
MODEL NUMBER¹	Precision 3480
POWER	<p>Integrated Graphics only: 65 W AC adapter, USB-C 100 W AC adapter, USB-C 130 W AC adapter, USB-C</p> <p>Discrete Graphics: 100 W AC adapter, USB-C 130 W AC adapter, USB-C</p>
REGULATORY^{8,12}	Product Safety, EMC and Environmental Datasheets Dell Regulatory Compliance Home Page Dell and the Environment
CHIPSET¹⁴	13 th Generation Intel RPL-U-series 13 th Generation Intel RPL-P-series
INTEL RESPONSIVENESS TECHNOLOGIES^{14,17}	Intel® Rapid Storage Technology
HARDWARE SECURITY	Trusted Platform Module (TPM) 2.0 discrete FIPS 140-2 certification for TPM TCG Certification for TPM (Trusted Computing Group) Finger Print Reader in Power Button tied to ControlVault 3 (optional) ControlVault 3 Advanced Authentication with FIPS 140-2 Level 3 Certification Contacted Smart Card and ControlVault 3 Contactless Smart Card, NFC, and ControlVault 3 SED SSD NVMe, SSD and HDD (Opal and non-Opal) per SDL
SENSORS	Ambient Light Sensor Accelerometer in the base: ST Micro LIS2DW12TR Accelerometer in the hinge-up (Upsell config with Emza/ALS/IR camera): ST Micro LNG2DMTR
SYSTEMS MANAGEMENT	Dell Command Monitor (DCM) Dell Command Configure (DCC) 4.7 WIN 32, 64-bit Dell Command Configure (DCC) 4.8 WIN 32, 64-bit Dell Command Integration Suite (DCIS) Dell Command Intel vPro (DCIV) Dell Command Update Dell Command Update Win 32

* Castor oil-based material rubber in the feet Tall oil-based bioplastic in the lid Ocean bound plastic in the fan housing Carbon fiber in the lid Recycled copper in AC adapter cable Recycled plastic in lid, AC adapter exterior, palm rest, inner frame, bezel, battery frame, SSD frame, speaker housing, LCD cover antenna window Packaging is made from 100% recycled or renewable content and is 100% recyclable.

** Based on internal analysis, January 2023. Select Precision Mobile Workstations (3480, 3580, 3581), 15P-H battery pack housing variants do not contain PCR.

***Up to 38.8 % recycled content and 61.2 % renewable materials in the form of FSC fibers. Excludes optional items added to order and included in box. Paper packaging materials can be recycled via municipal recycling, where available. System bag is made from recycled plastic and can be recycled along with other thin plastics. See local recycling guidelines.

1. Offering may vary by region. Some items may be available after product introduction. For complete details, refer to the Setup and Specifications published on www.dell.com/support.

2. System Memory and Graphics: Significant system memory may be used to support graphics, depending on system memory size and other factors.

3. 4 GB or Greater System Memory Capability: A 64-bit operating system is required to support 4 GB or more of system memory.

4. Particular versions of Microsoft Windows may not support the full Bluetooth 4.2 functionality.

5. Storage Option: GB means 1 billion bytes and TB equals 1 trillion bytes; actual capacity varies with preloaded material and operating environment and will be less.

6. TPM is available in selected regions.

7. Computrace: Not a Dell offer. Certain conditions apply. For full details, see terms and conditions at www.ijackforlaptops.com.

8. Please refer to <https://www.epeat.net> for specific country registration rating and participation.

9. Limited Hardware Warranty: For copy of Ltd Hardware Warranty, write Dell USA LP, Attn: Warranties, One Dell Way, Round Rock, TX 78682 or see www.dell.com/warranty.

10. Onsite Service after Remote Diagnosis: Remote Diagnosis is determination by online/phone technician of cause of issue; may involve customer access to inside of system and multiple or extended sessions. If issue is covered by Limited Hardware Warranty (www.dell.com/warranty) and not resolved remotely, technician and/or part will be dispatched, usually with business day following completion of Remote Diagnosis. Availability varies. Other conditions apply.

11. Dell Services: Availability and terms of Dell Services vary by region. For more information, visit <https://www.dell.com/servicesdescriptions>.

12. For complete listing of declarations and certifications, refer to the Dell Regulatory and Environmental Datasheet found in the Manuals section of Product Support information www.dell.com/support/home/us/en/19.

13. Based on Dell analysis, January 2023. Applies to Precision 3000/5000, Latitude 5000/7000/9000, Inspiron 16 Plus (7630), and Inspiron 14 Plus (7430). Recycled copper is 50% of total copper weight in the power adapter cable.