

Dell Precision Workstation Product Recommendations

Engineering Revit

FIXED WORKSTATIONS

Entry



Precision 3680  
Tower

For the professional architect, engineer, technician or designer performing 3D modelling and detailing on small to medium projects needing occasional rendering, VR interaction, structural, lighting analysis, or reality capture integration.

**CPU:** Intel® Core™ i7 14th Gen 14700K (33 MB cache, 20 cores, 28 threads, 3.4 GHz to 5.6 GHz, 125W)

**Memory:** 32GB: 2 x 16 GB, DDR5, 4400 MT/s, ECC

**Graphics:** NVIDIA® RTX™ A2000 12GB, 12 GB GDDR6

**Storage:** 1 TB, M.2 2280, Gen 4 PCIe NVMe, SSD

**OS:** Windows 10/11 Pro or Windows 10/11 Pro for Workstations

**Support:** 3 Years ProSupport with Next Business Day Onsite Service

Standard



Precision 3680  
Tower

For the professional architect, engineer, technician or designer performing 3D modelling and detailing on small to medium size projects needing frequent rendering, VR interaction, structural, lighting analysis, or reality capture integration.

**CPU:** Intel® Core™ i9 14th Gen 14900K (36 MB cache, 24 cores, 32 threads, 3.2 GHz to 6.0 GHz, 125W)

**Memory:** 64GB: 4 x 16 GB, DDR5, 4000 MT/s, ECC

**Graphics:** NVIDIA® RTX™ 4000 Ada Generation, 20GB GDDR6, 4DP

**Storage:** 1 TB, M.2 2280, Gen 4 PCIe NVMe, SSD

**OS:** Windows 10/11 Pro or Windows 10/11 Pro for Workstations

**Support:** 3 Years ProSupport with Next Business Day Onsite Service

Advanced



Precision 5860  
Tower

For the professional architect, engineer, technician or designer performing 3D modelling and detailing on medium to large projects needing frequent rendering, VR interaction, structural, lighting analysis, or reality capture integration.

**CPU:** Intel® Xeon® W5-2465X (33.75 MB cache, 16 cores, 32 threads, 3.1 GHz to 4.7 GHz Turbo, 200 W)

**Memory:** 64 GB, 4 x 16 GB, DDR5, 4000 MT/s

**Graphics:** Dual NVIDIA® RTX™ A6000, 48 GB GDDR6, 4 DP

**Storage:** 1TB PCIe NVME™ Class 40 M.2 SSD

**OS:** Windows 10/11 Pro or Windows 10/11 Pro for Workstations

**Support:** 3 Years ProSupport with Next Business Day Onsite Service

Ultimate



Precision 7960  
Tower

For the professional architect, engineer, technician or designer performing 3D modelling and detailing on large to extremely large projects needing frequent rendering, VR interaction, structural, lighting analysis, or reality capture integration.

**CPU:** Intel® Xeon® w9-3495X (105MB Cache, 56 cores, 112 threads, 1.9GHz to 4.8GHz Turbo 350W)

**Memory:** 128GB, 8x16GB, DDR5, 4800MT/s, RDIMM ECC Memory

**Graphics:** Dual NVIDIA® RTX™ A6000, 48 GB GDDR6, 4 DP

**Storage:** 2TB, M.2, PCIe NVMe, SSD, Class 40

**OS:** Windows 10/11 Pro or Windows 10/11 Pro for Workstations

**Support:** 3 Years ProSupport with Next Business Day Onsite Service



# Dell Precision Workstation Product Recommendations

## Engineering Revit

### MOBILE WORKSTATIONS

#### Entry

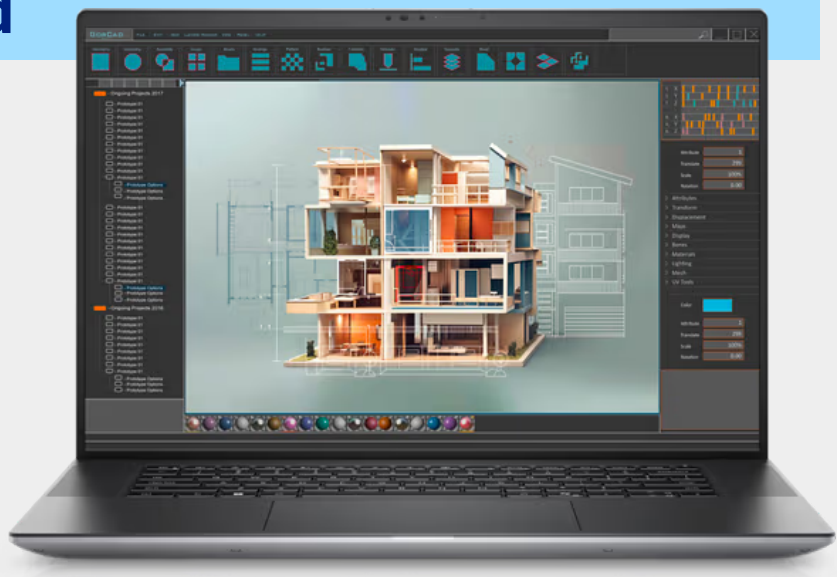


Precision 3591  
Mobile

For the professional architect, engineer, technician or designer performing 3D modelling and detailing on small to medium projects needing occasional rendering, VR interaction, structural, lighting analysis, or reality capture integration.

- CPU:** Intel® Core™ Ultra 7 165H vPro® Enterprise (24 MB cache, 16 cores, 22 threads, up to 5.0 GHz, 45W)
- Memory:** 32 GB: 2 x 16 GB, DDR5, 5600 MT/s, non-ECC
- Graphics:** NVIDIA® RTX™ 2000 Ada, 8 GB GDDR6
- Storage:** 512 GB M.2 PCIe NVMe Gen 4 2280 SSD
- OS:** Windows 10/11 Pro or Windows 10/11 Pro for Workstations
- Support:** 3 Years ProSupport with Next Business Day Onsite Service

#### Standard



Precision 5690  
Mobile

For the professional architect, engineer, technician or designer performing 3D modelling and detailing on small to medium size projects needing frequent rendering, VR interaction, structural, lighting analysis, or reality capture integration.

- CPU:** Intel® Core™ Ultra 7 165H vPro® Enterprise (24 MB cache, 16 cores, 22 threads, up to 5.0 GHz, 45W)
- Memory:** 64GB LPDDR5x 7467 MT/s
- Graphics:** NVIDIA® RTX™ 3500 Ada, 12GB GDDR6
- Storage:** 1 TB, M.2 2280, Gen 4 PCIe NVMe, SSD, Class 40
- OS:** Windows 10/11 Pro or Windows 10/11 Pro for Workstations
- Support:** 3 Years ProSupport with Next Business Day Onsite Service

#### Advanced

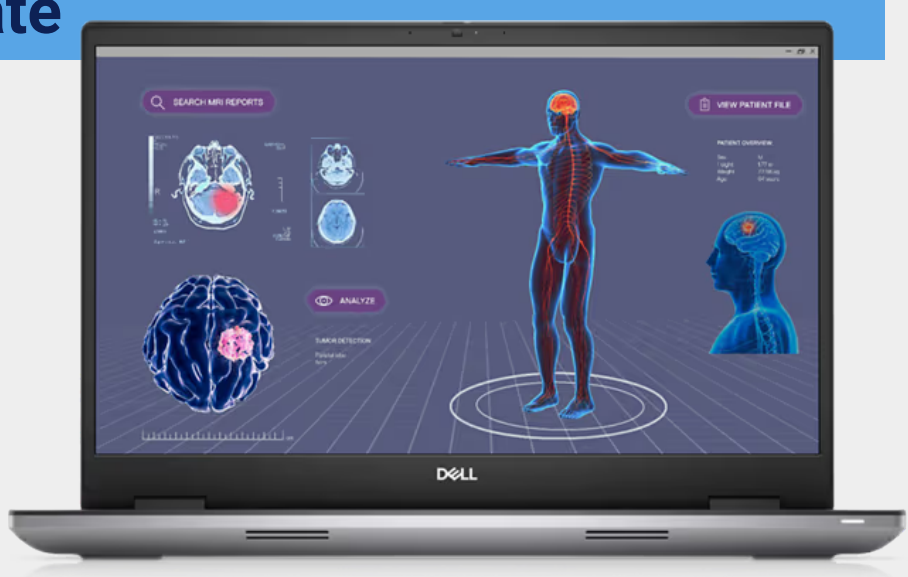


Precision 7680  
Mobile

For the professional architect, engineer, technician or designer performing 3D modelling and detailing on medium to large projects needing frequent rendering, VR interaction, structural, lighting analysis, or reality capture integration.

- CPU:** 13th Gen Intel® Core™ i9-13950HX, vPro® (36MB, 24 cores, 32 threads, up to 5.50 GHz Turbo, 55W)
- Memory:** 64GB, 2x32GB 5200MT/s SODIMM, non-ECC
- Graphics:** NVIDIA RTX™ 5000 Ada 16GB GDDR6
- Storage:** 1 TB, M.2 2280, Gen 4 PCIe NVMe, SSD, Class 40
- OS:** Windows 10/11 Pro or Windows 10/11 Pro for Workstations
- Support:** 3 Years ProSupport with Next Business Day Onsite Service

#### Ultimate



Precision 7780  
Mobile

For the professional architect, engineer, technician or designer performing 3D modelling and detailing on large to extremely large projects needing frequent rendering, VR interaction, structural, lighting analysis, or reality capture integration.

- CPU:** 13th Gen Intel® Core™ i9-13950HX, vPro® (36MB, 24 cores, 32 threads, up to 5.50 GHz Turbo, 55W)
- Memory:** 128GB, 1x128GB 3600MT/s CAMM, non-ECC
- Graphics:** NVIDIA RTX™ 5000 Ada 16GB GDDR6
- Storage:** 2 TB, M.2 2280, Gen 4 PCIe NVMe, SSD
- OS:** Windows 10/11 Pro or Windows 10/11 Pro for Workstations
- Support:** 3 Years ProSupport with Next Business Day Onsite Service

For more information see:

Please read the use case descriptions thoroughly to identify the appropriate recommendation for your usage. Recommendations are starting points and your requirements may vary.