

Dell Precision Workstation Product Recommendations
Media and Entertainment Maya

FIXED WORKSTATIONS

Entry



Precision 3680
Tower

For the 3D computer graphics artist performing modeling, light animation and effects work with limited rendering and effect simulations.

- CPU:** Intel® Core™ i7 14th Gen 14700 (33 MB cache, 20 cores, 28 threads, 2.1 GHz to 5.4 GHz, 65W)
- Memory:** 32GB: 2 x 16 GB, DDR5, 4400 MT/s, ECC
- Graphics:** AMD® Radeon™ Pro WX 3200, 4 GB GDDR5, 4 mDPAMD® Radeon™ Pro WX 3200, 4 GB GDDR5, 4 mDP NVIDIA® T1000 8GB, 8 GB GDDR6
- Storage:** 1 TB, M.2 2280, Gen 4 PCIe NVMe, SSD
- OS:** Windows 10/11 Pro or Windows 10/11 Pro for Workstations
- Support:** 3 Years ProSupport with Next Business Day Onsite Service

Standard



Precision 5860
Tower

For the 3D computer graphics artist performing modeling, light animation and effects work with occasional rendering and effects simulations.

- CPU:** Intel® Xeon® W5-2455X (30 MB cache, 12 cores, 24 threads, 3.2 GHz to 4.6 GHz Turbo, 200 W)
- Memory:** 64GB, 4x16GB, DDR5, 4800MT/s, RDIMM ECC Memory
- Graphics:** AMD Radeon Pro W6600, 8 GB GDDR6, 4 DPAMD Radeon Pro W6600, 8 GB GDDR6, 4 DP NVIDIA® RTX™ A4500, 20 GB GDDR6, 4 DP
- Storage:** 1 TB, M.2, PCIe NVMe, SSD, Class 40 2.5" 512GB SATA Class 20 Solid State Drive
- OS:** Windows 10/11 Pro or Windows 10/11 Pro for Workstations
- Support:** 3 Years ProSupport with Next Business Day Onsite Service

Advanced



Precision 7875
Tower

For the 3D computer graphics artist performing medium to high complexity modeling, animation and effects work with some rendering and effect simulations.

- CPU:** AMD Ryzen Threadripper PRO 7945WX (64 MB cache, 12 cores, 24 threads, 4.7GHz to 5.3GHz, 350 W)
- Memory:** 128 GB: 8 x 16 GB, DDR5, 4800 MT/s, RDIMM, ECC
- Graphics:** AMD Radeon Pro W6800, 32 GB GDDR6, 6 mDPAMD Radeon Pro W6800, 32 GB GDDR6, 6 mDP NVIDIA® RTX™ 6000 Ada, 48 GB GDDR6, 4 DP
- Storage:** 512 GB, M.2, PCIe NVMe, SSD, Class 40 M.2 1TB PCIe NVMe Class 50 Solid State Drive
- OS:** Windows 10/11 Pro or Windows 10/11 Pro for Workstations
- Support:** 3 Years ProSupport with Next Business Day Onsite Service

Ultimate



Precision 7960
Tower

For the 3D computer graphics artist performing highly complex modeling, animation and effects work with rendering and effects simulations.

- CPU:** Intel® Xeon® W7-3465X (75MB Cache, 28 cores, 56 threads, 2.5GHz to 4.8GHz Turbo 300W)
- Memory:** 128GB, 8x16GB, DDR5, 4800MT/s, RDIMM ECC Memory
- Graphics:** AMD Radeon Pro W6800, 32 GB GDDR6, 6 mDP NVIDIA® RTX™ A6000, 48 GB GDDR6, 4 DP, 7960T
- Storage:** 512GB, M.2, PCIe NVMe, SSD, Class 40 M.2 1TB PCIe NVMe Class 50 Solid State Drive
- OS:** Windows 10/11 Pro or Windows 10/11 Pro for Workstations
- Support:** 3 Years ProSupport with Next Business Day Onsite Service

Dell Precision Workstation Product Recommendations

Media and Entertainment Maya

MOBILE WORKSTATIONS

Entry



Precision 5490
Mobile

For the 3D computer graphics artist performing modeling, light animation and effects work with limited rendering and effects simulations.

- CPU:** Intel® Core™ Ultra 7 155H vPro® Essentials (24 MB cache, 16 cores, 22 threads, up to 4.8 GHz, 45W)
- Memory:** 32 GB: LPDDR5x, 7467 MT/s
- Graphics:** NVIDIA® RTX™ 2000 Ada Generation, 8 GB GDDR6
- Storage:** 512 GB M.2 PCIe NVMe Gen 4 2280 SSD, Class 40
- OS:** Windows 11 Pro, English, Brazilian Portuguese, French, Spanish
- Support:** 3 Years ProSupport with Next Business Day Onsite Service

Standard

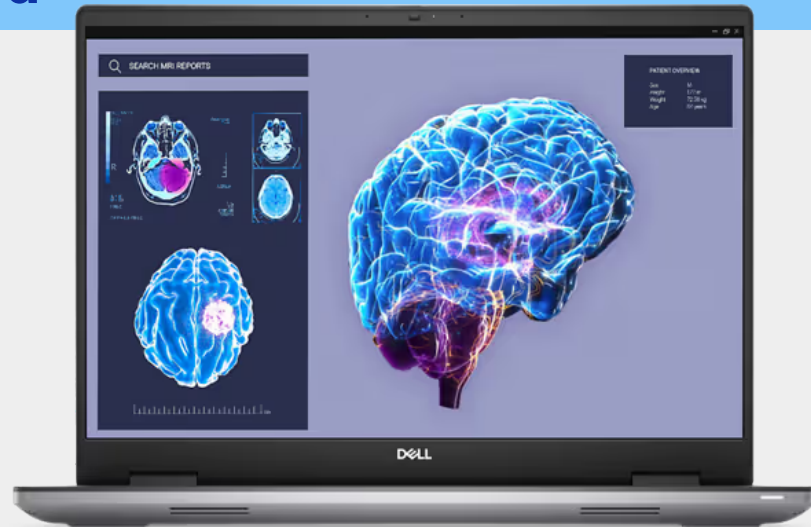


Precision 5690
Mobile

For the 3D computer graphics artist performing modeling, light animation and effects work with limited rendering and effects simulations desiring maximum mobility.

- CPU:** Intel® Core™ Ultra 7 165H, vPro® Enterprise (24MB, 16 cores, 22 threads, up to 5.0 GHz Turbo, 45W)
- Memory:** 32GB LPDDR5x 7467 MT/s
- Graphics:** NVIDIA® RTX™ 3500 Ada 12GB GDDR6
- Storage:** 1 TB, M.2 2280, Gen 4 PCIe NVMe, SSD, Class 40
- OS:** Windows 11 Pro, English, Brazilian Portuguese, French, Spanish
- Support:** 3 Years ProSupport with Next Business Day Onsite Service

Advanced

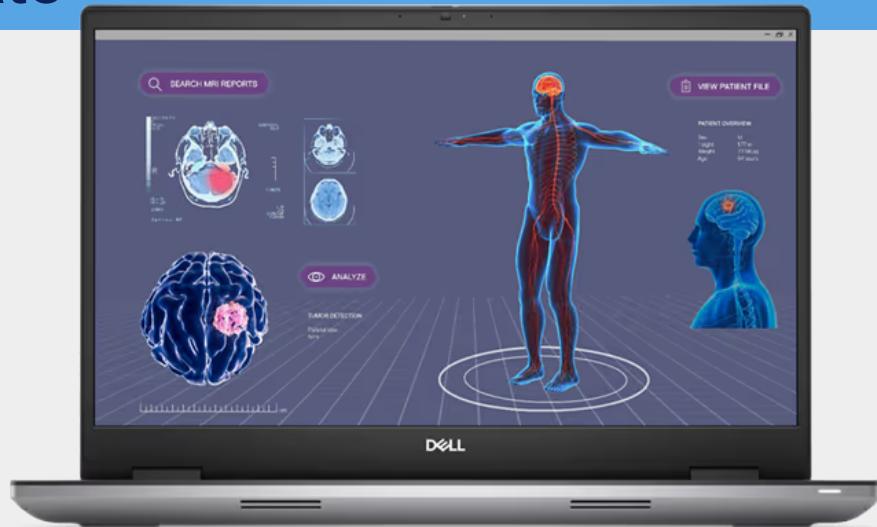


Precision 7680
Mobile

For the 3D computer graphics artist performing medium complexity modeling, animation and effects work with some rendering and effect simulations.

- CPU:** Intel® Core™ i9-13950HX (36MB Cache, 32 Threads, 24 Cores (8P+16E) up to 5.5GHz, 55w, vPro)
- Memory:** 32GB, 2x16GB 5600MT/s SODIMM, non-ECC
- Graphics:** NVIDIA RTX™ 5000 Ada 16GB GDDR6
- Storage:** 512 GB, M.2 2280, Gen 4 PCIe x4 NVMe, SSD
- OS:** Windows 10/11 Pro or Windows 10/11 Pro for Workstations
- Support:** 3 Years ProSupport with Next Business Day Onsite Service

Ultimate



Precision 7780
Mobile

For the 3D computer graphics artist performing highly complex modeling, animation and effects work with rendering and effects simulations.

- CPU:** Intel® Core™ i9-13950HX (36MB Cache, 32 Threads, 24 Cores (8P+16E) up to 5.5GHz, 55w, vPro)
- Memory:** 64GB, 2x32GB 5200MT/s SODIMM, non-ECC
- Graphics:** NVIDIA RTX™ 5000 Ada 16GB GDDR6
- Storage:** 2TB M.2 PCIe NVMe Gen 4 2280 SSD
- OS:** Windows 10/11 Pro or Windows 10/11 Pro for Workstations
- Support:** 3 Years ProSupport with Next Business Day Onsite Service

For more information see:

Please read the use case descriptions thoroughly to identify the appropriate recommendation for your usage. Recommendations are starting points and your requirements may vary.