



Dell Pro Max Performance PCs and Precision Workstations

The #1 workstation brand in the world¹

Dell Technologies also provides the most secure² and manageable PCs in the world.²

¹Source: IDC Quarterly Workstation Tracker, Q4 2024

²Based on Dell internal analysis, January 2025. Most-manageable commercial PCs when comparing the systems management capabilities of Dell Update Processes, Dell Manageability Solution capabilities and integrations with 3rd Party Management Solutions, with competitor update processes, systems management solution capabilities and integrations with 3rd party management solutions.

³3rd Party Management Solution - Microsoft Intune, is a separate purchase.

Power your passion



New product branding

We are transitioning Dell Precision workstations to a new brand category, Dell Pro Max. This transition started in January 2025 and all products will evolve into the new brand through the first half 2026. Thank you for your patience during the time and for your continued commitment to Dell Technologies.

You can trust the new Dell Pro Max performance PCs will do more than ever before as we bring out new technologies with the launch of all-new products.

Unbridle your potential

For over 25 years, Dell Technologies has delivered versatile designs, top performance and reliability to enable you to conquer your most demanding applications. From award-winning filmmakers and animators to state-of-the-art architects, engineers, and data scientists and VR developers, our expansive portfolio enables you to customize a solution that powers your passion, purpose and creative expertise.

Learn more at Dell.com/DellProMax

Need help finding the right workstation for you?

Visit our [Workstation Advisor](#)—an interactive tool that helps identify your unique system configuration based on your workflows or use case.



The Dell Advantage

Dell Pro Max and Precision workstation sport the latest technologies, security features and designs.



Intelligent performance

Dell Pro Max and Precision workstations deliver maximum performance with new Intel and AMD processors that feature advanced AI technology, as well as enhanced integrated graphics. Together the CPU, NPU and GPU provide for power efficiency.⁷ In fact, we offer a broad range of Intel and AMD processors to provide customizable processing power to fit your workloads. Combined with the latest professional NVIDIA and AMD graphics, as well as massive memory and expansive storage options you can power through some of the most computational and graphical applications at your desk or on the go.

Performance technologies

- New Intel and AMD processors with AI technologies
- New and more powerful integrated graphics
- Professional graphics from NVIDIA and AMD
- Advanced thermal solutions
- New Qualcomm AI-100 PC Inferencing Card (enterprise-class discrete NPU)
- Ultra-fast PCIe SSD storage options
- Thunderbolt™ 5 technology
- DDR5 memory, up to 8400MT/s

Advanced Security

Reduce the attack surface of your fleet with the industry's most secure commercial PCs.¹ Rigorous supply chain controls ensure PCs are secure from first boot, while unmatched hardware security keeps devices protected in-use.

Security on select systems

- Lockable and removable storage
- Lockable chassis
- Chassis intrusion sensors
- Privacy shutters on cameras
- Facial recognition
- Fingerprint readers
- Security software suites

Innovative design

Experience unrestrained innovation with the new thin, light and premium-designed mobile workstations. These devices can feature UHD+, HDR, OLED and Touch display options. Unique designs in multiple form factors deliver ultimate scalability, including rack, small form factor, and tower workstations. Additionally, select towers have FlexBays for easy part replacements, as well as multi-channel advanced cooling for outstanding acoustics and thermal performance.

Design technologies

- Small and light devices pack more performance while offering plenty of storage space and mobility - perfect for hybrid work environments
- Narrow bezel displays provide an immersive experience while maximizing viewing space
- ComfortView Plus reduces the amount of blue light emitted from the display to optimize eye comfort
- Active Touch displays provide for precise interaction with your workstation
- Customize and scale to meet your performance needs with multiple form factors and expansion options
- Fast connectivity options, including Wi-Fi 6E or 7, 5G, 4G LTE, Bluetooth 5.4 & eSIM4
- Windows and Linux operating systems are available

Note: Not all systems are available with these technologies

¹ Based on Dell internal analysis, September 2023. Applicable to PCs on Intel vPro processors. Not all features available with all PCs. Additional purchase required for some features.

Leveling up your capabilities

Rest easy knowing your Dell Pro Max and Precision workstations are designed for the technologies of today and into the future.



Outstanding reliability

Dell invests thousands of hours with Independent Software Vendors (ISV) to rigorously test our Dell Pro Max and Precision workstations so we can deliver a fully optimized solution to you. These software partners team with us and our customers to ensure the best user experience possible. Learn more about [ISV Certifications](#)

Dell exclusive, BIOS-based, Reliable Memory Technology Pro augments Error Corrective Code (ECC) memory, which automatically fixes single-bit memory errors. RMT Pro identifies and maps out bad memory sectors on the DIMM so they aren't accessed again following a reboot, which helps avoid memory errors and blue screens. The software also warns the user when DIMMs are at a critical point to failure and should be replaced.

Our mobile systems are MIL-SPEC tested to ensure they are robust and can handle typical wear and tear that comes with traveling. Also, Dell ProSupport Plus is the most complete service and support offering in the industry, so you can have both quality products and the ultimate services to go along with them.

Reliability technologies

- ISV Certifications
- MIL-STD 810H
- Intel processors with vPro
- Error Correcting Code (ECC) Memory
- Reliable Memory Pro Software
- Dell ProSupport

Driving Emerging Technologies

Dell Pro Max and Precision workstations are the foundation of virtual and augmented reality content creation and advanced commercial visualization. Our broad Ready for VR portfolio combined with the Dell Technology Partner Program are bringing futuristic efficiency and innovation to every office.

Dell Pro Max and Precision workstations also deliver the power to deploy and manage cognitive technology platforms, including Machine Learning, Deep Learning, and Artificial Intelligence, to help businesses solve complex problems and gain actionable insights from their data. Dell Pro Max and Precision workstations are a key part of the Dell and NVIDIA AI Factory.



Learn more about AI-ready solutions at Dell.com/ai

Note: Not all systems are available with these technologies

Performance vital for variety

From 3D animation to financial analytics, Dell Pro Max high performance PCs and workstations are purpose-built to power industry leaders across a wide variety of professional landscapes. Explore our industries below to find out how you can leverage Dell Pro Max to support your workflow.

Media and entertainment

Become an expert at your digital content workflow with a Dell Pro Max partnered with Adobe, Avid, Autodesk, and many other media ISVs.

[Learn more →](#)

Manufacturing and engineering

Quickly bring products to market, improve design, and reduce prototypes with Autodesk, Dassault Systems, ANSYS, and other software powered by Dell Pro Max.

[Learn more →](#)

Healthcare and life sciences

Maneuver telemedicine, EMR systems, and PACS images through partnerships with GE Healthcare, Barco, Cerner, and Epic.

[Learn more →](#)

Oil and gas

Complex workflow models and big data analytics are no match for workstation-class power combined with Halliburton, Schlumberger, and IHS Markit support.

[Learn more →](#)

State and Local Government

Learn how Dell Pro and Dell Pro Max fit within state and local government use cases.

[Learn more →](#)

Economics and financial services

Dell Pro Max performance PCs power trading floors, financial analysis, and banking through partnerships with financial institutions and ISVs.

[Learn more →](#)

Dell Pro Max 14 and 16

Level up your technology to match your skills with affordable workstation performance and reliability in a versatile package. Essential for design, creative content, financial analysis, and Microsoft power-users.



Intel



AMD



Dell Pro Max 14

The Dell Pro Max 14 AI PC offers essential performance for Power Users and business applications within a sleek, modern design. Ideal for budget-conscious users, it boosts CPU and discrete GPU performance compared to standard business laptops. Elevate your productivity with this lightweight device, starting at about 3.95lb (1.79kg), it is perfect for hybrid work and on-the-go tasks. It also features a robust 64Whr 4-cell battery, as well as WiFi 7 and single cable docking for seamless connectivity. Available with Intel Core Ultra or AMD Ryzen processors and up to NVIDIA RTX Pro™ 500 Blackwell graphics.*



Intel



AMD



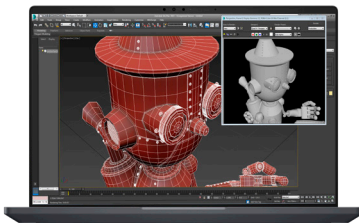
Dell Pro Max 16

Introducing a new, modern 16" AI PC designed to elevate your applications with an impressive Intel Core Ultra or AMD Ryzen 45W processor, and up to NVIDIA RTX Pro™ 2000 Blackwell graphics.* The expansive 16" display boasts a 16:10 aspect ratio and offers up to QHD+ resolution at 120Hz, with an optional touch feature available. Remarkably lightweight, this laptop starts at 4.59lb (2.08kg), making it portable without sacrificing performance. It also includes a full-sized keyboard with a number pad and a spacious clickpad for seamless interaction.

*Available on select configurations.
Note: Some components may vary throughout the product life cycle and regional offerings.

Dell Pro Max 14 & 16 Premium

Stay in your creative zone with enhanced performance designed to impress with a combination of style and capability. Perfect for users on-the-go with a light, but robust design, these devices are intended for design, creative, and other mainstream applications.



Dell Pro Max 14 Premium

Designed for those who push boundaries, the Dell Pro Max 14 Premium is innovation at its finest. Packed with the latest 45W Intel Core Ultra processors, up to next-generation NVIDIA RTX Pro™ Blackwell 2000 graphics, 64GB of blazing-fast memory, and 2TB of storage, it delivers unparalleled performance to your demanding creative projects. Immerse yourself in stunning visuals of the QHD+ 16x10 Tandem OLED display, featuring low blue light and VESA HDR TrueBlack 500 support. Effortless interaction meets elegant design with the Zero Lattice Micro LED keyboard and Haptic Touchpad, while the up to 8MP RGB + IR camera with Windows Hello ensures crystal-clear video calls.



Dell Pro Max 16 Premium

Unleash your full potential with the Dell Pro Max 16 Premium, designed to power your vision. Equipped with the an 45W Intel Core Ultra processor, up to NVIDIA RTX Pro™ Blackwell 3000 graphics, and impressive 8TBs of dual storage, this device perfectly handles demanding workflows. Achieve peak performance with thermals that include DOO fans and vapor chamber cooling, ensuring optimal functionality even under these heavy workloads. Experience the immersion of the Tandem OLED Touch display, Zero Lattice Micro LED keyboard, Haptic Trackpad and up to 8MP RGB IR camera. Power-up your Innovations.

Dell Pro Max 16 & 18 Plus

Put power behind your purpose with ultra-scalable mobile performance and reliability to power massive data sets, design simulations and analysis, rendering, and even VR and AI initiatives. These devices are perfect for energy, healthcare, engineering, and creative applications.



Dell Pro Max 16 Plus

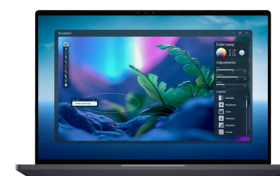
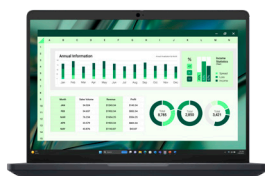
Tackle your most demanding projects with ease. Equipped with Intel 55W Core Ultra processors, up to NVIDIA RTX PRO™ 5000 Blackwell (24GB) graphics, or new Qualcomm AI-100 discrete NPU, and up to 256GB CAMM2 memory, this laptop redefines power. Handle complex workflows and massive datasets with 12TB of storage with RAID support. With Thunderbolt 5 and an advanced cooling system, you can push limits without overheating or delay. Enjoy unparalleled visuals with up to a stunning 16" UHD Tandem OLED display featuring 4K resolution, 120Hz refresh rate, and VESA HDR-1000 TrueBlack technology. Navigate effortlessly with a full-size keyboard and expansive clickpad. Plus, with an 8MP RGB+IR camera and MaxxAudio Pro sound, virtual collaboration is crystal clear.



Dell Pro Max 18 Plus

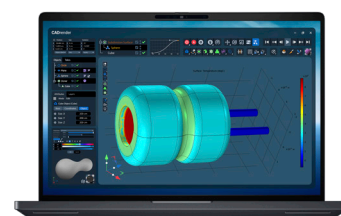
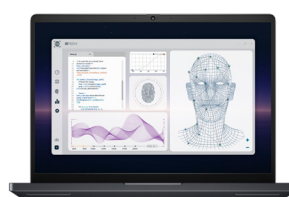
Under the hood, the Pro Max 18 Plus is built for those who won't compromise on power. Its 55W Intel Core Ultra processor, paired with integrated graphics and an NPU, ensures you stay productive. Backed by NVIDIA RTX PRO™ 5000 Blackwell graphics, with a massive 24GB of memory, this laptop is engineered to tackle professional-grade applications and AI workloads effortlessly. With support for up to 256GB of CAMM2 memory and an enormous 16TB of storage (plus RAID options), there's ample room for multitasking and storing your large projects.

Featuring an incredible 18-inch display, this laptop offers stunning QHD resolution with 500 nits of brightness to deliver amazing visuals that bring your work to life. Its generous 88% screen-to-body ratio maximizes your viewing space while keeping the modern design.



	DELL PRO MAX 14	DELL PRO MAX 16	DELL PRO MAX 14 PREMIUM
DESCRIPTIONS	Small, light 14" performance PC designed for Power Users	An affordable and light design 16" performance PC for Power Users	World's smallest footprint 14" mobile workstation features incredible performance
RECOMMENDED USE CASES	Great for advanced business application users, AI Inferencing and light design. Use cases: Knowledge workers, photographers, graphic designers	Great for graphic design, animation, video and photo editing, light CAD and CAM Use cases: Architects, engineers, video editors, animators, photographers, graphic designers	Great for graphic design, animation, video and photo editing, CAD and CAM Use cases: Architects, engineers, video editors, animators, photographers, graphic designer
PROCESSOR (UP TO)	Intel® Core™ Ultra 7 265H vPro, 28W, or AMD Ryzen™ AI 9 HX PRO 370,	Intel® Core™ Ultra 9 285H vPro, 45W, or AMD Ryzen™ AI 9 HX PRO 370 with PRO technologies	Intel® Core™ Ultra 9 285H vPro® Enterprise, 13 TOPS NPU,
GRAPHIC CARD (UP TO)	NVIDIA RTX PRO™ 500-Blackwell (6GB) - (Intel only) AMD model only available with AMD integrated graphics	NVIDIA RTX PRO™ 2000-Blackwell (8GB) - Intel only NVIDIA RTX™ PRO 1000-Blackwell, (8 GB) with AMD	NVIDIA RTX PRO™ 2000-Blackwell, (8GB)
MEMORY (UP TO)	64GB, LPCAMM2 LPDDR5X 8000MT/s, non-ECC*	64GB, LPDDR5x 8000MT/s, non-ECC*	64 GB (onboard), LPDDR5x, 8400 MT/s,
STORAGE (UP TO)	2TB	4TB	2TB
DISPLAY (UP TO)	14" 16:10 QHD+ or FHD+ Touch options available	16" 16:10 QHD+ or FHD+ Touch options available	14" 16:10 QHD+, 60Hz, Variable Refresh Rate (VRR), tandem OLED, 100% VESA-certified DisplayHDR™ True Black 500, Touch option
CAMERA (UP TO)	8MP IR Camera*	8MP IR Camera*	8MP IR Camera*
WIDTH	313mm	358mm	12.23 in. (310.60 mm)
DEPTH	227.3mm	256mm	8.36 in. (212.46 mm)
HEIGHT	24.65mm (peak), 14.79 mm (front), 18.90mm (rear)*	25.60mm (peak), 15.08mm (front), 19.08 mm (rear)*	0.74 in. (18.91 mm) (front), 0.74 in. (18.91 mm) (rear)
STARTING WEIGHT	3.95lb (1.79kg)	4.59lb (2.08kg)	3.55lb (1.61kg)
BATTERY (UP TO)	4-cell, 72 Whr	6-cell, 96 Whr	4-cell, 72 Whr

*Note: "Up to" components can vary based on product model. Some components may vary throughout the product life cycle and regional offerings.



	DELL PRO MAX 16 PREMIUM	DELL PRO MAX 16 PLUS	DELL PRO MAX 18 PLUS
DESCRIPTIONS	World's smallest footprint 16" workstation, with scalability and performance	Our most scalable 16" high performance PC delivers amazing power and user experience	Our most scalable and largest screen size workstation, 18", provides massive screen real estate and performance for your complex models
RECOMMENDED USE CASES	<p>Great for graphic design, animation, video and photo editing, CAD and CAM</p> <p>Use cases: Architects, engineers, video editors, animators, photographers, graphic designers</p>	<p>Great for VR/AR and AI applications, CAE and other complex apps</p> <p>Use cases: Engineers, creators, geophysicist, gaming developers, scientists, animators, graphic designers, heavy compute applications</p>	<p>Great for AI applications, CAE and other complex apps</p> <p>Use cases: Engineers, creators, geophysicist, gaming developers, scientists, animators, graphic designers and users of heavy compute, graphical applications</p>
PROCESSOR (UP TO)	Intel® Core™ Ultra 9 285H vPro® Enterprise, 13 TOPS NPU,	Intel® Core™ Ultra 9 285HX, 13 TOPS NPU,	Intel® Core™ Ultra 9 285HX, 13 TOPS NPU,
GRAPHIC CARD (UP TO)	NVIDIA RTX PRO™ 3000 Blackwell (12GB)	NVIDIA RTX PRO™ 5000 Blackwell (24GB)	NVIDIA® RTX™ PRO™ 5000 Blackwell (24GB)
MEMORY (UP TO)	64GB (onboard), LPDDR5x, 8400 MT/s	The 256GB CAMM speed will be 5200MT. 64GB and 128GB CAMM2 will be 6400MT. or 96 GB DDR5, 6400MT/s, CSoDIMM	The 256GB CAMM speed will be 5200MT. 64GB and 128GB CAMM2 will be 6400MT. or 96 GB DDR5, 6400MT/s, CSoDIMM
STORAGE (UP TO)	8TB	12TB	16TB
DISPLAY (UP TO)	16" 4K UHD+, 120Hz VRR, tandem OLED, VESA-certified DisplayHDR™ True Black 1000, Touch option	16" Touch, UHD+, 120Hz, OLED, Low Blue Light, VESA HDR TrueBlack 1000	18" QHD+, 120Hz, WVA, Low Blue Light, Non-touch
CAMERA (UP TO)	8MP RGB + IR Camera	8MP 30 fps HDR RGB+IR camera	8MP 30 fps HDR RGB+IR camera
WIDTH	13.93 in. (353.8 mm)	14.17 in. (360 mm)	15.83 in. (402 mm)
DEPTH	9.46 in. (240.28 mm)	10.18 in. (258.60 mm)	11.02 in. (279.95 mm)
HEIGHT	0.8 in. (20.24 mm) (front), 0.8 in. (20.24 mm) (rear)	0.68 in. (17.34 mm) (front), 0.75 in. (18.97 mm) (rear)	0.71 in. (17.92 mm) (front), 0.77 in. (19.56 mm) (rear)
STARTING WEIGHT	4.82lb (2.19kg)	5.63lb (2.55kg)	7.17lb (3.25kg)
BATTERY (UP TO)	6-cell, 96 Whr	6-cell, 96 Whr	6-cell, 96 Whr

Dell Pro Max Micro, Slim and Tower T2

Take your ideas to new places with a workstation that matches your skills but doesn't break the bank. Available in compact, small form factor, and a tower design, they are great for space-constrained workspaces, as well as some Edge use cases. These workstations are optimal for financial, design, creative applications, and many more.



Dell Pro Max Micro

The Dell Pro Max Micro is an ultra-compact PC designed for customers with space constraints but demand top-tier performance. With a chassis size of just 2.9L, Micro is one of the smallest mini workstations in the world delivering uncompromised workstation-level performance and extraordinary density. Despite its small size, the Pro Max Micro is engineered for versatility. It can be mounted behind a monitor, placed under a desk, or even racked in a data center—giving customers multiple options based on workspace needs.



Dell Pro Max Slim

Dell Pro Max Slim is a balanced and flexible small form factor PC that offers mainstream workstation-level performance in a space-saving design. For the first time in an 8L chassis, Slim supports a 125W CPU and up to 128GB DDR5 memory, with 360W total power output. This enables it to cover about 80% of regular workstation and desktop power user workloads, all with cost-efficiency. The new optional module offers 9 configurable port options. A third PCIe slot also allows customers to apply more add-in-cards based on their needs.



Dell Pro Max Tower T2

Dell Pro Max Tower T2 is the world's most powerful tower workstation, in its class. Our unlimited turbo duration technology enables the new 125W Inter Core Ultra Processors to consistently operate at a 250W power level, making it the fastest workstation for single-thread performance. Dell Pro Max Tower T2 is also the first tower workstation to support the NVIDIA Blackwell 600W Professional GPU, the most powerful client graphics card in the world —unlocking extraordinary capabilities for demanding visual and AI applications. The Tower T2 is designed for enhanced expandability. With an additional PCIe expansion slot and an upgraded 1500W power supply, the T2 is ready for customers to scale their workloads.

¹Based on internal analysis against comparable products in market. January 2024

Note: Some components may vary throughout the product life cycle and regional offerings.

5000 SERIES TOWER

Keep pace with your stream of thought with a mid-stream tower designed to deliver amazing performance for powerhungry applications. VR, AI-ready, and Data Science versions available.



Precision 5860 Tower

Experience big power in an innovative tower design with powerful processors. The 5860 Tower is ideal for professional users working with graphics and data - intensive design applications that require higher core counts and high-end graphics support in a single socket architecture. The tool-less chassis with FlexBay design supports a range of modules including scalable storage. Plus, stay cool under pressure with the revolutionary multichannel thermal design.

7000 Series Tower and Rack

Maximize your productivity with our most scalable workstations available. Featuring full tower designs, as well as a 2U rack workstation, these devices are great for almost any data or graphic-intensive application.



Precision 7875 Tower

Power your productivity with the amazing 7875 Tower, which is ideal for engineers, designers, analysts, and data scientists whose application mix includes multi-threaded, compute intensive or compute-intensive analysis, simulation, and rendering applications requiring high CPU 350W core counts. Features the AMD Ryzen Threadripper™ PRO (280W) processor, with between 12-96 Cores; up to two NVIDIA or AMD Pro 300W graphics and 56TB of RAID capable storage.



Precision 7960 Tower

The world's most scalable tower workstation¹. The 7960 Tower is great for customers who are running complex application environments including interactive design, analysis, data science, and exploration of very large data sets, as well as emerging applications/workloads like artificial intelligence and xReality. A versatile split chassis design features tool-less front access FlexBays and delivers maximum storage expandability.



Precision 7960 Rack

With the world's most powerful rack workstation² you can experience the highest level of secure remote access and ultimate workstation performance in a 2U rack industrial design. Plus, the Integrated Dell Remote Access Controller (iDRAC) allows you to deploy, update, monitor, and maintain remote workstations with ease. Collaborate across your organization, while keeping your IP in the data center.

¹Based on internal analysis, comparing similar HP and Lenovo towers. Feb 2024
²Based on internal analysis, Feb 2024. No Tier 1 competitor has a 2U rack workstation.

Note: Some components may vary throughout the product life cycle and regional offerings.



	DELL PRO MAX MICRO	DELL PRO MAX SLIM	DELL PRO MAX TOWER T2
DESCRIPTIONS	<p>World's smallest workstation available with Tensor Core GPUs.¹</p> <p>Compact, Ultra Small Form Factor</p>	<p>Performance & affordability in a small form factor.</p> <p>Small Form Factor</p>	<p>World's fastest workstation for single-threaded performance.²</p> <p>Mid-tower</p> <p>Unlimited Turbo Duration (125W CPUs) and Enhanced Performance (65W CPUs) available with new Premium Air Cooling solution</p>
PROCESSOR (UP TO)	15th gen Arrow-Lake-S Core Ultra CPU: Ultra 5 – Ultra 9 (65W@85W)	15th gen Arrow-Lake-S Core Ultra CPU: Ultra 5 – Ultra 9 (65W@85W) Ultra 5K – Ultra 9K (125W)	15th gen Arrow-Lake-S Core Ultra CPU: Ultra 5 – Ultra 9 (65W@85W) Ultra 5K – Ultra 9K (PL1=PL2@250W)
GRAPHIC CARD (UP TO)	NVIDIA RTX 4000 Blackwell SFF (20GB)	NVIDIA RTX 4000 Blackwell SFF (20GB)	NVIDIA RTX 6000 Blackwell (600W)
MEMORY (UP TO)	64GB DDR5 6400MT/s CSO-DIMM w/ECC options	128GB 4400MT/s DDR5 w/ ECC support	128GB or up to 4400MT/s DDR5 w/ECC options
STORAGE (UP TO)	(2) M.2 SSD, up to 8TB total	(3) M.2 SSD, up to 8.5TB total (1) 3.5", up to 8TB total	(3) M.2 SSD, up to 12TB total (3) 3.5", up to 24TB total Front access storage
AI slots	(1) PCIe x8 Gen 4 (1) PCIe x1 Gen 4	(1) PCIe x16 Gen 4 (1) PCIe x4 Gen 4 (1) PCIe x1 Gen 4	(1) PCIe x16 Gen 5 (1) PCIe x4 Gen 4 (1) PCIe x4 Gen 3 (1) PCIe x4 Gen 3
Chassis Size	2.9L (+0% vs. pred)	8.5L (+7.6% vs. pred)	32L (+18.5% vs. pred)
PSU/Power Adapter	180W, 280W	300W, 360W	360W, 500W, 1500W

¹Based on internal analysis vs competitive products within in the Ultra small and small form factor workstation space, December 2023.

²Based on internal study of competitors and Dell workstation products, January 2024.

³Based on internal analysis, Sept 2023.

Technical specifications subject to change without prior notice. Product availability varies by country. Please contact your Dell representative for more information. Copyright© 2023 Dell Inc. or its subsidiaries. All Rights Reserved. Dell Technologies, Dell, EMC and Dell EMC are trademarks of Dell Inc. or its subsidiaries. Other trademarks may be trademarks of their respective owners.



	PRECISION 5860 TOWER	PRECISION 7875 TOWER	PRECISION 7960 TOWER	PRECISION 7960 RACK
DESCRIPTIONS	Mid-tower with exceptional scalability. Mid-tower	Dell's highest core count on single CPU. ³ Full tower	Powerful, made for ultimate scalability. Full tower	Ultimate performance and security in a 2U form factor. 2U Rack
PROCESSOR (UP TO)	Intel® Xeon® (225W) processors, up to 24 cores	AMD Ryzen Threadripper™ Pro (350W) processor, up to 96 cores	Intel® Xeon® (350W) processor, up to 56 cores	Up to (2) Intel® Xeon® (350W) processors, up to 56 cores each
GRAPHIC CARD (UP TO)	300W AMD or NVIDIA graphics	(2) 300W Graphics from NVIDIA or AMD	(4) 300W AMD or NVIDIA graphics	(2) 300W AMD or NVIDIA graphics
MEMORY (UP TO)	2TB 4800MT/s DDR5 ECC memory	2TB 4800MT/s DDR5 ECC memory	4TB 4800MT/s DDR5 ECC memory	8TB 4800MT/s DDR5 ECC memory
STORAGE (UP TO)	56TB storage, RAID 0/1/5/10	56TB storage, RAID 0/1/5/10	152TB storage, RAID 0/1/5/10	128TB storage, RAID 0/1/5/10

¹Based on internal analysis vs competitive products within in the Ultra small and small form factor workstation space, December 2023.
²Based on internal study of competitors and Dell workstation products, January 2024.
³Based on internal analysis, Sept 2023.
Technical specifications subject to change without prior notice. Product availability varies by country. Please contact your Dell representative for more information. Copyright© 2023 Dell Inc. or its subsidiaries. All Rights Reserved.
Dell Technologies, Dell, EMC and Dell EMC are trademarks of Dell Inc. or its subsidiaries. Other trademarks may be trademarks of their respective owners.

Dell Pro Max with GB

Designed for AI developers seeking top-tier AI performance at the desk. These devices are built on NVIDIA's Grace Blackwell Super Chip architecture and pre-configured with NVIDIA's AI software stack to build and run AI workloads effortlessly.



Dell Pro Max with GB10

Exceptional AI inference and development at the desk-side in a compact design. Ideal for developing and testing AI models, efficiently handling up to 200 billion parameters with secure local processing or 400 billion parameters when two GB10 devices are interconnected using NVIDIA's ConnectX-7 network chip.



Dell Pro Max with GB300 (coming soon)

AI powerhouse for large-scale, heavy-duty AI workloads. Ideal for large-scale AI development and data-driven workloads. Supports up to 1 trillion parameter models, delivering groundbreaking 20,000 TFLOPS of FP4 compute power to your desk.

Dell Pro Max with GB10	Dell Pro Max with GB300
Incredible power in a compact design	Massive performance for heavy-duty workloads
NVIDIA GB10 Grace Blackwell Superchip	NVIDIA GB300 Grace Blackwell Ultra Desktop Superchip
Up to 280W	Up to 1500W
128GB LPDDR5x coherent unified memory	784GB Coherent memory
Supports up to 200Bn parameter models	Supports up to 1T parameter models
One Petaflop (1000 TFLOPS) of FP4 computing power	20 Petaflops (20,000 TFLOPS) of FP4 computing power
NVIDIA DGX OS on Linux & NVIDIA AI Enterprise software stack	NVIDIA DGX OS on Linux & NVIDIA AI Enterprise software stack
Can stack two GB10 systems together to multiple performance	Advanced, patented thermal design



Sustainable innovation



Built with sustainable materials

The laptops are designed with recycled, renewable or low emission materials like recycled magnesium, post-consumer recycled plastic, bio-based plastic, recycled ocean-bound plastic, and come with a battery and adapter made from recycled cobalt and recycled and low emissions aluminum.¹ Desktops are made with post-consumer recycled plastic, closed-loop plastic and recycled ocean-bound plastic.² The Dell Pro Max Plus ships with an adapter designed with the industry's first, 80% recycled copper in the cable.³



Packaging with purpose

Ships in packaging with 100% recycled or renewable materials⁶ with multipack options for easier unboxing and reduced transportation and packaging waste.⁷



Leading design for PC longevity

The Dell Pro Max portfolio of workstations feature reliable design with modular USB-C ports that are up to 14 times better twist resistance and up to 100 times better impact resistance.⁴ Select models feature modular mainboards and I/O boards for easier repairs and reduced e-waste,⁵ while modular batteries connect to the frame to minimize damage. Designed for durability and longevity, Dell ensures easy access to parts for extended product life.

[Parts, Batteries & Upgrades >](#)



Seamlessly transition from old to new technology

We can help you responsibly and securely retire your legacy IT equipment, regardless of brand, while addressing your sustainability goals.

[Asset Recovery Services >](#)



Simplify IT

Our most secure¹ and most manageable⁴ offerings make IT management a breeze

World's Most Secure Commercial PCs¹

According to Principled Technologies, no PC manufacturer offers the BIOS-level visibility Dell does.



SECURITY

Improve fleet-wide security with multiple layers of defense.

Reduce the attack surface and enhance long-term cyber resilience with [Dell Trusted Workspace](#)



Be secure from first boot with rigorous supply chain controls.



Maintain BIOS integrity with deep, firmware-level visibility.



Protect end-user identity from malware that looks to steal credentials.



Enrich OS-level data with PC telemetry to speed detection, response and remediation.



Layer on advanced threat protection from our ecosystem of best-of-breed software partners.



Shrink the IT-security gap with an integrated, AI-enabled solution

Explore hardware-assisted security with Dell, Intel & CrowdStrike.

[Hardware-Assisted Security >](#)

MANAGEABILITY

Manage your fleet of PCs - reliably and easily

Help secure and optimize your endpoints and deliver end-user productivity with [Dell Manageability Solutions](#)

With [Dell Management Portal](#), you can manage Dell PCs, over the cloud, in conjunction with Microsoft Intune. [Dell Management Portal >](#)

Update and secure your fleet of Dell PCs, with one application – [Dell Client Device Manager](#).⁵

[Dell Trusted Update Experience](#) makes it simple to update endpoints with the latest BIOS and driver versions. Dell is the only Top-5 PC vendor that:



Publishes² a device drivers and downloads release schedule:

IT Admins can deploy fleet-wide device updates on a predictable timeline.



Performs³ integrated validation of all driver and BIOS modules in an update:

IT Admins can expect a trusted, system compatible update deployment, across a fleet of devices.

[Dell Trusted Update Experience >](#)



Dell has the industry's first:⁴

Partner Portal accessible in Microsoft Intune, with fleet-wide BIOS password access capability and Enterprise application access and publication capabilities

Binary Large Object (BLOB) package-based solution, for endpoint BIOS settings configuration, using Microsoft Intune

Hardware OEM systems management solution to integrate with Intel vPro



CLAIMS

Page 16

1. Dell Pro Max: Based on internal analysis, December 2024. 50% post-consumer recycled plastic in the bezel, palmrest innerframe, 30% in the top cover, bottom cover and speaker housing. 50% recycled cobalt in the 64whr, 72whr and 96whr batteries, 42% bio-based plastic bottom bumpers and 21% bio-based plastic in the top and bottom covers, 28% recycled ocean-bound plastic in the fan housing and 20% reclaimed carbon fiber in the top and bottom covers. Dell Pro Max Plus: Based on internal analysis, January 2025. 90% recycled magnesium in the top and bottom covers, 30% post-consumer recycled plastic in the palmrest and SSD holder, 50% recycled cobalt in the battery (72 whr) and 46% bio-based plastic bottom bumpers. Dell Pro Max Premium: Based on internal analysis, January 2025. Recycled cobalt applies to the 72whr battery. 30% post-consumer recycled plastic in the speaker housing and 98% post-consumer recycled plastic in the battery frame, 90% recycled magnesium in the bottom cover, recycled and low emissions aluminum in the top cover and palmrest and 50% recycled cobalt in the battery.
2. Based on internal analysis, February 2025. Percentage is based on system plastic weight. Up to 47% post-consumer recycled plastic and 11% closed loop ITE derived plastic. 13% recycled ocean bound plastic in the fan-housing of the Dell Pro Max Micro and Tower desktops.
3. Based on internal analysis, February 2025. Recycled copper applies to the cable of the 280W GaN adapter.
4. Applies to Dell Pro Max Plus 16 and Dell Pro Max Plus 18 notebooks launching in 2025. Based on internal comparison of the solder connection on Precision 7680 and Precision 7780 vs screwed connection testing data of the Dell Pro Max Plus laptops subject to a standard repeated axial load and a standard wrenching torque in multiple directions. New USB-C port design is as screwed on connection for easier repairs and improved durability. Read warranty information for USB-C port replacement instructions.
5. Based on internal analysis, November 2024. applies TO the DELL Pro Max Premium workstation.
6. Desktop packaging contains up to 56.7% recycled content and up to 57.9% renewable materials. Workstation packaging contains up to 93.9% recycled content and up to 7.1% renewable materials. Renewable materials in the form of sustainably forested materials. Percentages may vary slightly by region[and formfactor]. Excludes optional items added to order and included.
7. Excludes Dell Pro Max Tower. Based on internal analysis, February 2025.
8. Based on internal analysis, December 2024. EPEAT registered where applicable. EPEAT registration varies by country. See www.epeat.net for registration status by country.

Page 17

1. Based on Dell internal analysis, October 2024. Applicable to PCs on Intel processors. Not all features available with all PCs. Additional purchase required for some features. Validated by Principled Technologies. [A comparison of security features](#), April 2024.
2. Dell publishes a device drivers and downloads release schedule. Source: Source: Based on internal analysis, May 2023. When comparing publicly available device drivers and downloads release schedules published by the Top 5 PC vendors, as of May 2023.
3. Dell performs integrated validation of all driver and BIOS modules in an update. Source: Based on Dell internal analysis, May 2023, of integrated validation approaches of Top 5 PC vendors, for driver and BIOS modules in an update, by currently shipping and future-state product system images.
4. Capabilities of Dell Update Processes, Dell Management Portal and Dell Manageability Solutions capabilities and integrations with 3rd Party Management Solutions, with competitor update processes, partner portal capabilities in Microsoft Intune systems management solution capabilities and integrations with 3rd party management solutions. 3rd Party Management Solutions - Microsoft Intune, Workspace ONE, are separate purchases. Intel vPro, to support out-of-band systems management, is an additional system configuration upgrade; and Dell has the industry's first:
 - a. Based on Dell internal analysis - October 2024. Based on Dell Management Portal capabilities in Microsoft Intune compared to competitor Partner Portal capabilities in Microsoft Intune.
 - b. Dell Command | Endpoint Configure for Microsoft Intune - the industry's first Binary Large Object (BLOB) package-based solution, for securely configuring & managing endpoints, using Microsoft Intune. Disclaimer: Industry's first device manageability solution to use a Binary Large Object (BLOB) package, recognized by Microsoft Intune, for secure endpoint configuration and management.
 - c. Dell Command | Intel vPro Out of Band - the industry's first hardware OEM systems management solution to integrate with Intel vPro - for remote management of systems, regardless of power-state. Disclaimer: Based on Dell internal analysis, November 2023.
5. Dell Client Device Manager application availability planned for March 2025.