



Premium look. Premium options.

Latitude 7350/7450/7650

Intel® Core™ Ultra processor

Most secure¹, intelligent² and manageable³ commercial PC

Exceptional battery life

Latitude 7450 with Intel® Core™ Ultra processors offers battery life up to 19% longer on average than the previous generation.⁹

Premium panels⁸

Enjoy 5% more room for productivity with a taller 16:10 aspect ratio display (vs. a 16:9 aspect ratio).

Options for QHD+ resolution, ComfortView Plus, and Battery-saving displays available on 13 and 14.

Touch options available on the 13 and 14.

2-in-1 configurations offer active pen support and feature and Corning® Gorilla Glass® Victus™.

Optional battery-saving Mini-LED Backlit Technology

Reduces power drain by the keyboard up to 75% and increases battery life.¹

Intentionally designed to lower environmental impact:

- World's first premium commercial PC to use 50% recycled cobalt in its battery.⁴
- 7350 and 7450 Ultralight configurations contain up to 90% recycled magnesium in the chassis.⁵
- 7350, 7450, and 7650 aluminum configurations will start shipping with 50% low emissions and 50% recycled aluminum in chassis in 2024.⁶
- Meets the highest environmental standards for energy efficiency and climate impact.⁷

Variety of premium designs

Ultralight magnesium laptops in a stunning River color available on the 13 and 14.

Aluminum laptops in classic Titan Gray available on the 13, 14, & 16. 2-in-1 form factor available on the 13 and 14.

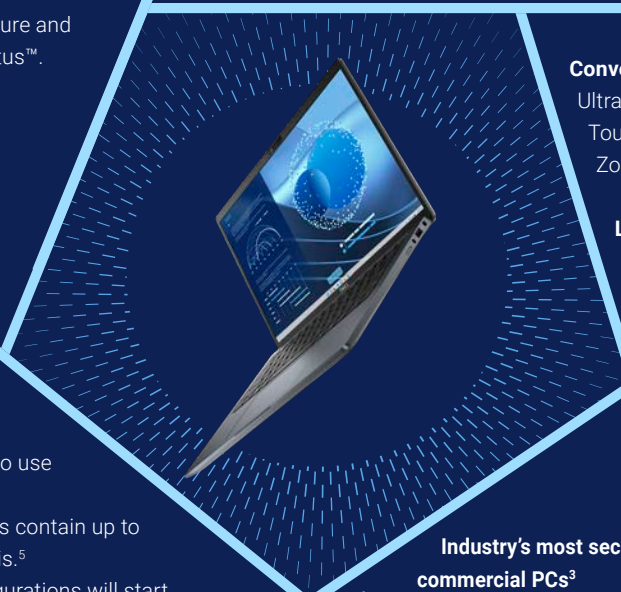
Ultralight configurations ideal for busy mobile professionals

13.3 Ultralight configs starting at 0.989 kg / 2.18 lbs.
14.0 Ultralight configs starting at 1.06 kg / 2.33 lbs.

World's smallest 13.3 premium commercial laptop¹

Simplified ordering and management

Laptop and 2-in-1 form factors available on the same system BIOS.



Convenient conferencing icons

Ultralight configurations feature a Collaboration Touchpad that puts critical Microsoft Teams and Zoom² conferencing controls at your fingertips.

Look your best on every video call

An FHD or FHD IR camera with HDR technology accurately captures image detail in challenging lighting conditions.

For the highest resolution, select a 5MP camera option (standard on Ultralight configs).

A manual privacy shutter on all configurations protects your privacy.

Industry's most secure commercial PCs³

- Only Dell offers Off-host BIOS verification and Indicators of Attack to reduce exposure to future threats.
- Integrates PC telemetry with industry-leading software to improve fleet-wide security
- Secured Component Verification, offered only by Dell, helps ensure PCs are secure from factory to first boot

Loud and clear audio

Conferencing sounds amazing with two mics and quad speakers, including two top-firing and two bottom-firing speakers.

Military-grade durability

Passes MIL-STD 810H tests.

AI-enhanced performance and efficiency



Unlock AI-enhanced performance and efficiency with Intel® Core™ Ultra processors and Copilot in Windows 11.



Intel® Core™ Ultra processor

The new Intel® Core™ Ultra processor combined with Intel vPro® delivers a secure hardware platform with premium performance and optimized power efficiency, ready to handle the next generation of AI workloads and the versatile management options that businesses require to stay ahead of the game.

Enjoy the next generation of performance hybrid architecture for supercharged computing with a battery that lasts thanks to a three tier multi-processing unit. Business users can manage complex workloads by sending the right task to the right engine at the right time with a CPU for lightweight low-latency AI tasks, GPU¹ for media and visual AI rendering, and NPU, a dedicated AI engine, for sustained AI and AI offload.



AI-enhanced apps

Apps optimized for NPU run faster and smoother, delivering more battery life.

Collaboration: Use up to 38% less power when utilizing AI-enhanced collaboration tools during Zoom calls.²

Creativity: 132% faster performance when running on-device AI photo editing on Adobe.³

Security: Detect malware with less than 1% CPU utilization using CrowdStrike.⁴



Copilot in Windows 11

Effortlessly jumpstart your workflow with the Copilot Hardware Key on your device, saving you time by providing quick access to the tools you need to start your workday.

Copilot in Windows⁵ is your AI assistant at work. Supercharge your productivity and achieve more with less time and effort, while keeping sources private and protected. Copilot brings intelligent tools to your desktop so you can get better answers, sharpen skills, find fresh solutions, and create in new ways.



Sustainable innovation



Built with sustainable materials

These laptops have been thoughtfully crafted with a selection of sustainable materials including post-consumer recycled plastic, bio-based plastic and 50% recycled cobalt. This year, these laptops will ship or start shipping with 90% recycled magnesium or 50% recycled and 50% low emissions aluminum in the chassis.¹

They ship with an adapter designed with 95% post-consumer recycled plastic in the case and 98% recycled aluminum in the thermal shield.²



Low-impact packaging

Latitude 7350, 7450 and 7650 ship in packaging made with 100% recycled or renewable materials that is also 100% recyclable.³ Multipack options are available to lower packaging and transportation waste.⁴



Responsible IT asset retirement

Dell APEX offerings and Asset Recovery Services make it easier for our customers to modernize responsibly, and reduce over-provisioning and e-waste, on schedule and within budget.

Dell makes it easy to access and replace parts to get the most life out of our products.



Environmental Certifications & Registrations

Meeting environmental standards demonstrates how our products adhere to energy-efficiency specifications and other extensive climate-related standards. These laptops are Certified ENERGY STAR[®] 8.0, TCO certified, generation 9 and EPEAT gold registered with Climate+ designations.⁵

Learn More

<http://www.dell.com/upgrade>

Dell Optimizer



We make it intelligent. You make it yours.

Powering the world's most intelligent commercial PCs¹ with AI-based optimization software that learns and responds to the way you work.



Up-level audio for a better collaboration experience

Intelligent Audio delivers sound and mic enhancements so you can fully engage in meetings with confidence. Reduce the background noise of conference call participants with neural noise cancellation. Voice quality monitoring checks your voice and notifies you if the quality is poor.

2x

Faster network performance²

Network Optimization enables clearer, more productive conference calls with enhanced connectivity and bandwidth. The world's first simultaneous multi-network connection provides faster data and video downloads³ while joining the best network⁴ available.



Work smarter with an intelligent ecosystem

Enjoy easy pairing and management of your Dell monitors and accessories with the integration of Dell Display Manager and Dell Peripheral Manager.



Intelligent privacy anywhere

Get to work faster and keep your sensitive data private with our Presence Detection technology - which wakes your PC when you approach and locks it when you walk away.



Get up to 18% in power savings⁵

Save energy without sacrificing performance for ultimate efficiency with Power Optimization. Achieve power savings when you set your PC to Quiet Mode on your thermal management settings — giving you up to 2.4 watts of power savings compared to default mode.⁵



Up-level your PC experience with Dell Displays and Accessories

Designed and tested to work better together

As the world's #1 monitor company¹, Dell knows that modern workplace requires more than PCs. We offer 200+ branded accessories to keep you connected and collaborative no matter your work style



A



B



C



D



E



F



G

F Dell Bluetooth Travel Mouse - MS700

G Dell UltraSharp Webcam - WB7022

A Dell 34 Curved Video Conferencing Monitor - P3423WEB

B Dell UltraSharp 27 Thunderbolt Hub Monitor - U2724DE

C Dell Thunderbolt 4 Dock - WD22TB4

D Dell EcoLoop Pro Backpack 15 - CP5723

E Dell Premier Wireless Keyboard and Mouse - KM7321W



Customize your entire workspace, simplify management and enhance privacy with Dell Display Manager and Dell Peripheral Manager

▶ Discover more solutions for the modern workplace

Simplify IT

Our most secure¹ and most⁶ manageable offerings make IT management a breeze

SECURITY

Improve fleet-wide security with multiple layers of defense

Reduce the attack surface and enhance long-term cyber resilience with [Dell Trusted Workspace](#)

Dell offers the industry's most secure commercial PCs¹ with protections competitors cannot match:



Be secure from first boot

Rigorous, state-of-the-art supply chain controls and Dell-unique [Secured Component Verification](#) reduce the risk of product tampering.



Spot ticking timebombs

Early-alert feature Indicators of Attack, offered only by Dell, scans for behavior-based threats.



Stay protected from evolving threats

Only Dell offers off-host BIOS and firmware verification, providing greater security than other PCs. The latest Intel vPro[®]-based PCs provide an estimated 70% attack surface reduction.⁴

Layer on advanced threat protection with software from our ecosystem of best-of-breed partners.

Only Dell integrates device telemetry with industry-leading software to improve fleet-wide security.

[Learn More >](#)

MANAGEABILITY

Manage your fleet of PCs - reliably and easily

Help secure and optimize your endpoints and deliver end-user productivity with [Dell Manageability Solutions](#)

[Dell Trusted Update Experience](#) makes it simple to update endpoints, packing the latest BIOS, driver, and firmware versions. Dell is the only Top-5 PC vendor that:



Publishes² a device drivers and downloads release schedule:

IT Admins can deploy fleet-wide device updates on a predictable timeline.



Performs³ integrated validation of all driver and BIOS modules in an update:

IT Admins can expect a trusted, system compatible update deployment, across a fleet of devices.

[Learn More >](#)



Dell has the industry's first:⁵

- Binary Large Object (BLOB) package-based solution using Microsoft Intune
- Systems Management Solution to integrate with Workspace ONE
- Hardware OEM systems management solution to integrate with Intel vPro[®]

Legacy, scale and innovation

Dell Technologies is your trusted partner for the future of work

Dell Technologies APEX

1st

and most comprehensive¹
As-a-service portfolio that spans from multi-cloud to client devices.

Experience the flexibility to transform your IT and deploy the latest technologies at predictable costs.

Dell APEX PC-as-a-Service

Fully customizable subscription covers everything - devices, software and services; available from one-to-five-year terms.

Dell APEX Managed Device Service

Fully managed, subscription with a team of IT experts to keep business devices up-to-date and secure; and no year-long commitment (US only).

[Learn more>](#)

Asset Recovery Services

2.6B

Pounds of electronics recovered since 2007⁶

Let Dell help you securely and responsibly retire your old IT equipment - regardless of brand - to allow for a seamless transition from old to new technology, while protecting both your business and the planet.

[Learn more>](#)

AI-driven support services

36TB

Telemetry data processed per day²

Evolving with you, using machine learning and an AI engine that learns fast. Trust Dell Technologies to deliver hyper-efficient, automated IT support, drawn from decades of AI experience and top-ranked services.

[Learn more>](#)

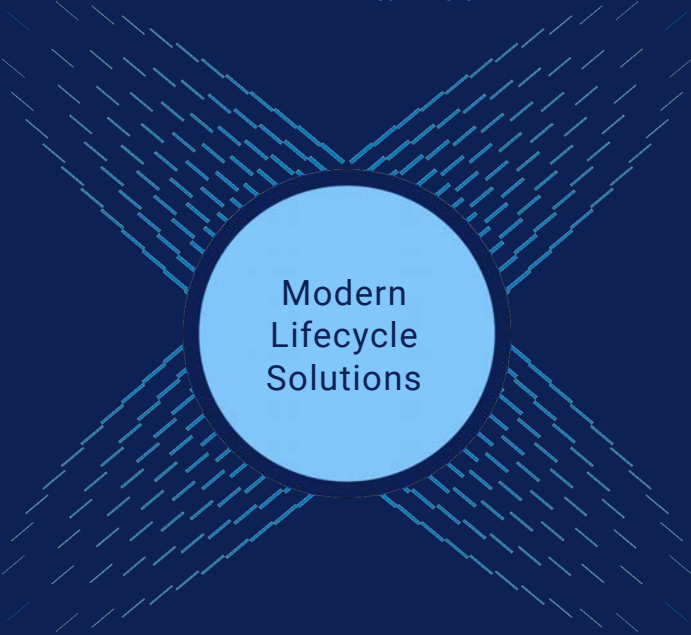
ProDeploy Client Suite for PCs

30K+

PC's configured daily³
For organizations of any size, find the right-sized deployment solution to solve an array of IT needs.

35 years of deployment expertise from Dell ensures seamless experiences for configuration, imaging, and provisioning; as well as asset tagging and warehousing.

[Learn more>](#)



Modern Lifecycle Solutions

ProSupport Suite for PCs

641

Hours of admin time saved per year⁴
With advanced telemetry and AI, IT teams can remotely manage the health of their Dell fleet, anticipate and resolve issues and automate PC updates.

[Learn more>](#)

Dell Premier

297%

ROI over 4 years⁵

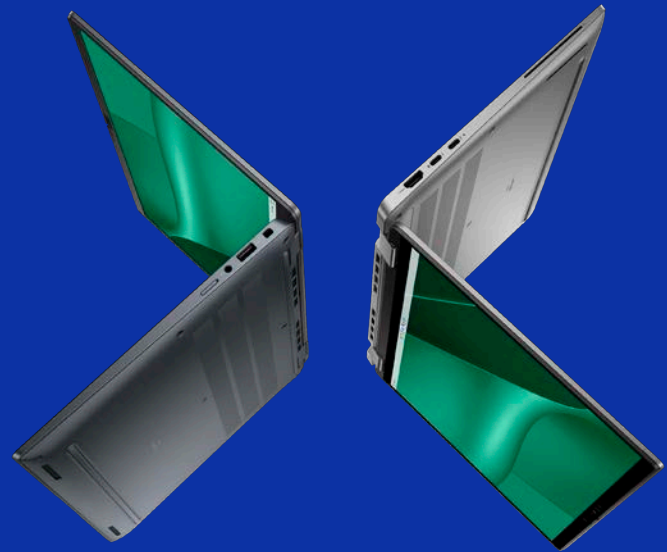
Modernize IT purchasing by shopping your catalog in a tailored online solution. Gain control over the entire IT ecosystem to cut costs, standardize ordering, access analytics and more.

[Learn more>](#)

ONE Latitude 7350 & 7450



TWO base configuration options



Feature*	Latitude 7350 7450 7650	Latitude 7350 / 7450 Ultralight
Use Case	Lightweight devices with a broad range of premium features	Ultimate in mobility with a broad range of premium features
Chassis Material & Color	Aluminium, Titan Grey	Magnesium, River Blue
Form Factor	Laptop or 2-in-1	Laptop
Camera	FHD HDR FHD HDR IR 5MP IR (only available on 7350 7450)	5MP IR
Starting Weight	Laptop 13.3: 1.152 kg / 2.54 lbs. 14.0: 1.325 kg / 2.92 lbs. 16.0: 1.837 kg / 4.05 lbs. 2-in-1 13.3: 1.297 kg / 2.86 lbs. 14.0: 1.526 kg / 3.36 lbs.	Laptop 13.3: 0.989 kg / 2.18 lbs. 14.0: 1.058 kg / 2.33 lbs.



Not All Technical Specifications Available Per System Configuration.

[Please search Dell.com/support for product owner's manual or contact your Dell Technologies sales expert.](https://www.dell.com/support)

FEATURE	TECHNICAL SPECIFICATION	TECHNICAL SPECIFICATION	TECHNICAL SPECIFICATION
MODEL NUMBER¹	Latitude 7350 (laptop or 2-in-1)	Latitude 7450 (laptop or 2-in-1)	Latitude 7650 (laptop)
CHASSIS MATERIAL & COLOR	Aluminium, Titan Grey	Aluminium, Titan Grey	Aluminium, Titan Grey
DISPLAY^{1,17}	<p><u>2-in-1</u> 13.3" 16:10 QHD+, (2560x1600), IPS Touch, 500 nits, Anti-reflective and Anti-smudge, Corning® Victus Gorilla Glass® DX, ComfortView Plus Low Blue Light, Active Pen Support</p> <p><u>Laptop</u> 13.3" 16:10 FHD+, (1920x1200), IPS Non-Touch, 250 nits, Anti-glare 13.3" 16:10 FHD+, (1920x1200), IPS Non-Touch, 400 nits, Anti-glare, Battery-saving, ComfortView Plus Low Blue Light 13.3" 16:10 FHD+, (1920x1200), IPS Touch, 300 nits, Anti-glare</p>	<p><u>2-in-1</u> 14.0" 16:10 QHD+, (1920x1200), IPS Touch, 300 nits, Anti-reflective and Anti-smudge, Corning® Victus Gorilla Glass® DX, ComfortView Plus Low Blue Light, Active Pen Support</p> <p><u>Laptop</u> 14.0" 16:10 FHD+, (1920x1200), IPS Non-Touch, 250 nits, Anti-glare, 14.0" 16:10 QHD+, (2560x1600), IPS Touch, 400 nits, sRGB 100%, Anti-glare, Battery-saving, ComfortView Plus Low Blue Light 14.0" 16:10 FHD+, (1920x1200), IPS Touch, 300 nits, Anti-glare</p>	<p><u>Laptop</u> 16.0" 16:10 FHD+, (1920x1200), IPS Non-Touch, 250 nits, Anti-glare</p>
PROCESSOR OPTIONS¹	Up to Intel® Core™ Ultra 7 processors, MTL-U, vPro®	Up to Intel® Core™ Ultra 7 processors, MTL-U, vPro® Up to Intel® Core™ Ultra 7 processors, MTL-H, vPro®	Up to Intel® Core™ Ultra 7 processors, MTL-U, vPro® Up to Intel® Core™ Ultra 7 processors, MTL-H, vPro®
AI ACCELERATOR	This Latitude system features a neural processing unit (NPU). An NPU is a microprocessor that specializes in the acceleration of machine learning tasks. NPU helps to offset the resources from CPU and/or GPU, consumes low power and improves resource utilization when processing massive multimedia data such as video and images.	This Latitude system features a neural processing unit (NPU). An NPU is a microprocessor that specializes in the acceleration of machine learning tasks. NPU helps to offset the resources from CPU and/or GPU, consumes low power and improves resource utilization when processing massive multimedia data such as video and images.	This Latitude system features a neural processing unit (NPU). An NPU is a microprocessor that specializes in the acceleration of machine learning tasks. NPU helps to offset the resources from CPU and/or GPU, consumes low power and improves resource utilization when processing massive multimedia data such as video and images.
CHIPSET¹	Integrated with the processor	Integrated with the processor	Integrated with the processor
OPERATING SYSTEM¹	Microsoft® Windows 11 Home 64-bit Microsoft® Windows 11 Pro 64-bit Ubuntu® 20.04 LTS, 64-bit (Laptop only)	Microsoft® Windows 11 Home 64-bit Microsoft® Windows 11 Pro 64-bit Ubuntu® 20.04 LTS, 64-bit (Laptop only)	Microsoft® Windows 11 Home 64-bit Microsoft® Windows 11 Pro 64-bit Ubuntu® 20.04 LTS, 64-bit (Laptop only)
GRAPHICS^{2,17}	Intel® Graphics	Intel® Graphics Intel® Arc™ graphics (Integrated)	Intel® Graphics Intel® Arc™ graphics (Integrated)
MEMORY^{1, 2, 3}	Up to 64 GB LPDDR5x SDRAM 6400 MT/s (on board)	Up to 64 GB LPDDR5x SDRAM 6400 MT/s (on board)	Up to 64 GB LPDDR5x SDRAM 6400 MT/s (on board)
STORAGE^{1, 3}	up to 2 TB, M.2 2230, TLC PCIe Gen4 NVMe, SSD 512 GB, M.2 2230, TLC PCIe Gen4 NVMe Self Encrypting Opal 2.0, SSD	up to 2 TB, M.2 2230, TLC PCIe Gen4 NVMe, SSD 512 GB, M.2 2230, TLC PCIe Gen4 NVMe Self Encrypting Opal 2.0, SSD	up to 2 TB, M.2 2230, TLC PCIe Gen4 NVMe, SSD 512 GB, M.2 2230, TLC PCIe Gen4 NVMe Self Encrypting Opal 2.0, SSD
SECURITY¹	Face IR camera (Windows Hello compliant) with ExpressSign-in 1.0 (Proximity Sensor), ExpressSign-in 2.0 (Camera Sensing) Optional Windows Hello compliant fingerprint reader in power button	Face IR camera (Windows Hello compliant) with ExpressSign-in 1.0 (Proximity Sensor), ExpressSign-in 2.0 (Camera Sensing) Optional Windows Hello compliant fingerprint reader in power button	Face IR camera (Windows Hello compliant) with ExpressSign-in 1.0 (Proximity Sensor), ExpressSign-in 2.0 (Camera Sensing) Optional Windows Hello compliant fingerprint reader in power button
DOCKING¹	(Docks are optional, sold separately) Dell Dual Charge Dock - HD22Q Dell Thunderbolt 4 Dock - WD22TB4 Dell USB-C Dock - WD19S 130W Dell USB-C Dock - WD19S 180W	(Docks are optional, sold separately) Dell Dual Charge Dock - HD22Q Dell Thunderbolt 4 Dock - WD22TB4 Dell USB-C Dock - WD19S 130W Dell USB-C Dock - WD19S 180W	(Docks are optional, sold separately) Dell Dual Charge Dock - HD22Q Dell Thunderbolt 4 Dock - WD22TB4 Dell USB-C Dock - WD19S 130W Dell USB-C Dock - WD19S 180W
CONNECTIVITY¹	Microsoft Modern Standby Compliant Wireless LAN Options⁸: Intel® BE200 Wi-Fi 7 2x2, BT 5.4 Wireless Card Mobile Broadband Options¹⁰: 4G CAT12 - Qualcomm Snapdragon X12 Global LTE-Advanced (DW5825e), eSIM, WW 4G CAT12 - Qualcomm Snapdragon X12 Global LTE-Advanced (DW5825e), eSIM, AT&T, T-Mobile, Verizon 5G - Qualcomm Snapdragon X62 Global 5G Modem (DW5932e), eSIM, WW 5G - Qualcomm Snapdragon X62 Global 5G Modem (DW5932e), eSIM, AT&T, T-Mobile, Verizon 5G - Qualcomm Snapdragon X62 Global 5G Modem (DW5932e), Non-eSIM, China only	Microsoft Modern Standby Compliant Wireless LAN Options⁸: Intel® BE200 Wi-Fi 7 2x2, BT 5.4 Wireless Card Mobile Broadband Options¹⁰: 4G CAT12 - Qualcomm Snapdragon X12 Global LTE-Advanced (DW5825e), eSIM, WW 4G CAT12 - Qualcomm Snapdragon X12 Global LTE-Advanced (DW5825e), eSIM, AT&T, T-Mobile, Verizon 5G - Qualcomm Snapdragon X62 Global 5G Modem (DW5932e), eSIM, WW 5G - Qualcomm Snapdragon X62 Global 5G Modem (DW5932e), eSIM, AT&T, T-Mobile, Verizon 5G - Qualcomm Snapdragon X62 Global 5G Modem (DW5932e), Non-eSIM, China only	Microsoft Modern Standby Compliant Wireless LAN Options⁸: Intel® BE200 Wi-Fi 7 2x2, BT 5.4 Wireless Card Mobile Broadband Options¹⁰: 4G CAT12 - Qualcomm Snapdragon X12 Global LTE-Advanced (DW5825e), eSIM, WW 4G CAT12 - Qualcomm Snapdragon X12 Global LTE-Advanced (DW5825e), eSIM, AT&T, T-Mobile, Verizon 5G - Qualcomm Snapdragon X62 Global 5G Modem (DW5932e), eSIM, WW 5G - Qualcomm Snapdragon X62 Global 5G Modem (DW5932e), eSIM, AT&T, T-Mobile, Verizon 5G - Qualcomm Snapdragon X62 Global 5G Modem (DW5932e), Non-eSIM, China only

FEATURE	TECHNICAL SPECIFICATION	TECHNICAL SPECIFICATION	TECHNICAL SPECIFICATION
MODEL NUMBER¹	Latitude 7350 (laptop or 2-in-1)	Latitude 7450 (laptop or 2-in-1)	Latitude 7650 (laptop)
CAMERA¹	FHD HDR camera with built-in camera shutter and Temporal Noise Reduction for high image quality Optional FHD HDR IR MIPI camera with built-in camera shutter, ExpressSign-in™, Intelligent Privacy, Ambient Light sensor, Temporal Noise Reduction for high image quality Optional 5MP IR MIPI camera with built-in camera shutter, ExpressSign-in™, Intelligent Privacy, Ambient Light sensor, Temporal Noise Reduction for high image quality	FHD HDR camera with built-in camera shutter and Temporal Noise Reduction for high image quality Optional FHD HDR IR MIPI camera with built-in camera shutter, ExpressSign-in™, Intelligent Privacy, Ambient Light sensor, Temporal Noise Reduction for high image quality Optional 5MP IR MIPI camera with built-in camera shutter, ExpressSign-in™, Intelligent Privacy, Ambient Light sensor, Temporal Noise Reduction for high image quality	FHD HDR camera built-in camera shutter and Temporal Noise Reduction for high image quality Optional FHD HDR IR MIPI camera with built-in camera shutter, ExpressSign-in™, Intelligent Privacy, Ambient Light sensor, Temporal Noise Reduction for high image quality
AUDIO & SPEAKERS	2 x Top Firing Premium Speakers, 2 x bottom firing Premium Speakers, Waves MaxxAudio Pro, Smart Amplifier, Intelligent Audio with Neural Noise Cancellation	2 x Top Firing Premium Speakers, 2 x bottom firing Premium Speakers, Waves MaxxAudio Pro, Smart Amplifier, Intelligent Audio with Neural Noise Cancellation	2 x Top Firing Premium Speakers, 2 x bottom firing Premium Speakers, Waves MaxxAudio Pro, Smart Amplifier, Intelligent Audio with Neural Noise Cancellation
MICROPHONE	2x Noise Cancelling Microphones	2x Noise Cancelling Microphones	2x Noise Cancelling Microphones
BATTERY^{1, 6}	3 Cell, 57Wh ⁵ , Li-ion, ExpressCharge 1.0™, ExpressCharge Boost™ 3 Cell, 57 Wh ⁵ , Li-ion, ExpressCharge 1.0™, Long Life Cycle, 3-year limited hardware warranty 2 Cell, 38Wh ⁵ , Li-ion, ExpressCharge 1.0™, ExpressCharge Boost™ 2 Cell, 38 Wh ⁵ , Li-ion, ExpressCharge 1.0™, Long Life Cycle, 3-year limited hardware warranty	3 Cell, 57Wh ⁵ , Li-ion, ExpressCharge 1.0™, ExpressCharge Boost™ 3 Cell, 57 Wh ⁵ , Li-ion, ExpressCharge 1.0™, Long Life Cycle, 3-year limited hardware warranty 2 Cell, 38Wh ⁵ , Li-ion, ExpressCharge 1.0™, ExpressCharge Boost™ 2 Cell, 38 Wh ⁵ , Li-ion, ExpressCharge 1.0™, Long Life Cycle, 3-year limited hardware warranty	3 Cell, 57Wh ⁵ , Li-ion, ExpressCharge 1.0™, ExpressCharge Boost™ 3 Cell, 57 Wh ⁵ , Li-ion, ExpressCharge 1.0™, Long Life Cycle, 3-year limited hardware warranty 2 Cell, 38Wh ⁵ , Li-ion, ExpressCharge 1.0™, ExpressCharge Boost™ 2 Cell, 38 Wh ⁵ , Li-ion, ExpressCharge 1.0™, Long Life Cycle, 3-year limited hardware warranty
POWER¹	60W AC adapter, Type-C, Ultralight Mini 60W AC Ultralight, Type-C, Mini adapter, 2-pin (Japan only) 65W AC adapter, USB Type-C, 100W AC adapter, Type-C	60W AC adapter, Type-C, Ultralight Mini 60W AC Ultralight, Type-C, Mini adapter, 2-pin (Japan only) 65W AC adapter, USB Type-C, 100W AC adapter, Type-C	60W AC adapter, Type-C, Ultralight Mini 60W AC Ultralight, Type-C, Mini adapter, 2-pin (Japan only) 65W AC adapter, USB Type-C, 100W AC adapter, Type-C
PORTS^{1, 17}	2x USB Type-C Thunderbolt™ 4.0 with Power Delivery & DisplayPort 2.1 1x USB 3.2 Gen 1, one with Power Share 1x HDMI 2.1 1x Optional external uSIM card tray (WWAN only) 1x Optional Touch Fingerprint Reader in Power Button 1x Universal Audio jack	2x USB Type-C Thunderbolt™ 4.0 with Power Delivery & DisplayPort 2.1 2x USB 3.2 Gen 1, one with Power Share 1x HDMI 2.1 1x Optional external uSIM card tray (WWAN only) 1x Optional Touch Fingerprint Reader in Power Button 1x Universal Audio jack	2x USB Type-C Thunderbolt™4.0 with Power Delivery & DisplayPort 2.1 2x USB 3.2 Gen 1, one with Power Share 1x HDMI 2.1 1x Optional external uSIM card tray (WWAN only) 1x Optional Touch Fingerprint Reader in Power Button 1x Universal Audio jack
SLOTS¹	1x Optional Contacted SmartCard Reader Wedge Shaped Lock slot	1x Optional Contacted SmartCard Reader Wedge Shaped Lock slot	1x Optional Contacted SmartCard Reader Wedge Shaped Lock slot
TOUCHPAD	Microsoft® Precision Clickpad	Microsoft® Precision Clickpad	Microsoft® Precision Clickpad
INPUT¹	Microsoft® Precision Clickpad Spill Resistant Non-Backlit Keyboard Spill Resistant Battery-saving Micro-LED Backlit Keyboard (optional) Dell Premier Rechargeable Active Pen - PN7522W (optional, sold separately, 2-in-1 only) Dell Active Pen - PN5122W (optional, sold separately, 2-in-1 only)	Microsoft® Precision Clickpad Spill Resistant Non-Backlit Keyboard Spill Resistant Battery-saving Micro-LED Backlit Keyboard (optional) Dell Premier Rechargeable Active Pen - PN7522W (optional, sold separately, 2-in-1 only) Dell Active Pen - PN5122W (optional, sold separately, 2-in-1 only)	Microsoft® Precision Clickpad Spill Resistant Non-Backlit Keyboard Spill Resistant Battery-saving Micro-LED Backlit Keyboard (optional)
SENSORS¹	Gyroscope, Digital Compass/Magnetometer, Accelerometer, GPS (via WWAN Card only), Ambient Light Sensor, GMR sensor (2-in-1 only), Adaptive Thermal Performance (via Gyroscope/Accelerometer), Dell ExpressSign-In (via Camera-based proximity), Wake/Power on with lid open (via Hall sensor) *varies by size/model	Gyroscope, Digital Compass/Magnetometer, Accelerometer, GPS (via WWAN Card only), Ambient Light Sensor, GMR sensor (2-in-1 only), Adaptive Thermal Performance (via Gyroscope/Accelerometer), Dell ExpressSign-In (via Camera-based proximity), Wake/Power on with lid open (via Hall sensor) *varies by size/model	Gyroscope, Digital Compass/Magnetometer, Accelerometer, GPS (via WWAN Card only), Ambient Light Sensor, Adaptive Thermal Performance (via Gyroscope/Accelerometer), Dell ExpressSign-In (via Camera-based proximity), Wake/Power on with lid open (via Hall sensor) *varies by size/model
DIMENSIONS^{1, 15}	<u>2-in-1</u> Height (front): 0.65 in. (16.45 mm) Height (rear): 0.70 in. (17.75 mm) Width: 11.77 in. (299 mm) Depth: 8.39 in. (213.2 mm) Starting Weight: 2.86 lbs. (1.297 kg) <u>Laptop</u> Height (front): 0.65 in. (16.44 mm) Height (rear): 0.70 in. (17.75 mm) Width: 11.77 in. (299 mm) Depth: 8.39 in. (213.2 mm) Starting Weight: 2.54 lbs (1.15 kg)	<u>2-in-1</u> Height (front): 0.67 in. (17.10 mm) Height (rear): 0.72 in. (18.21 mm) Width: 12.32 in. (313.00 mm) Depth: 8.77 in. (222.8 mm) Starting Weight: 3.36 lbs. (1.526 kg) <u>Laptop</u> Height (front): 0.67 in. (17.10 mm) Height (rear): 0.72 in. (18.21 mm) Width: 12.32 in. (313.00 mm) Depth: 8.77 in. (222.8 mm) Starting Weight: 2.92 lbs. (1.325 kg) <u>Laptop H28</u> Height (front): 0.70 in. (17.90 mm) Height (rear): 0.76 in. (19.19 mm) Width: 12.32 in. (313.00 mm) Depth: 8.77 in. (222.9 mm) Starting Weight: 2.96 lbs. (1.341 kg)	<u>Laptop</u> Height (front): 0.72 in. (18.40 mm) Height (rear): 0.77 in. (19.50 mm) Width: 14.09 in. (358.00 mm) Depth: 9.86 in. (250.42 mm) Starting Weight: 4.05 lbs. (1.837 kg) <u>Laptop H28</u> Height (front): 0.72 in. (18.40 mm) Height (rear): 0.77 in. (19.50 mm) Width: 14.09 in. (358.00 mm) Depth: 9.86 in. (250.42 mm) Starting Weight: 4.06 lbs. (1.841 kg)

FEATURE	TECHNICAL SPECIFICATION	TECHNICAL SPECIFICATION
MODEL NUMBER¹	7350 Ultralight	7450 Ultralight
CHASSIS MATERIAL & COLOR	Magnesium, River Blue	Magnesium, River Blue
DISPLAY^{1,17}	<u>Laptop</u> 13.3" 16:10 FHD+, (1920x1200), IPS Non-Touch, 400 nits, Anti-glare, Battery-saving, ComfortView Plus Low Blue Light 13.3" 16:10 FHD+, (1920x1200), IPS Touch, 300 nits, Anti-glare	<u>Laptop</u> 14.0" 16:10 FHD+, (1920x1200), IPS Non-Touch, 400 nits, Anti-glare, Battery-saving, ComfortView Plus Low Blue Light 14.0" 16:10 QHD+, (2560x1600), IPS Touch, 400 nits, sRGB 100%, Anti-glare, Battery-saving, ComfortView Plus Low Blue Light
PROCESSOR OPTIONS¹	up to Intel® Core™ Ultra 7 processors, MTL-U, vPro®	up to Intel® Core™ Ultra 7 processors, MTL-U, vPro®
AI ACCELERATOR	This Latitude system features a neural processing unit (NPU). An NPU is a microprocessor that specializes in the acceleration of machine learning tasks. NPU helps to offset the resources from CPU and/or GPU, consumes low power and improves resource utilization when processing massive multimedia data such as video and images.	This Latitude system features a neural processing unit (NPU). An NPU is a microprocessor that specializes in the acceleration of machine learning tasks. NPU helps to offset the resources from CPU and/or GPU, consumes low power and improves resource utilization when processing massive multimedia data such as video and images.
CHIPSET¹	Integrated with the processor	Integrated with the processor
OPERATING SYSTEM¹	Microsoft® Windows 11 Home 64-bit Microsoft® Windows 11 Pro 64-bit Ubuntu® 20.04 LTS, 64-bit (Laptop only)	Microsoft® Windows 11 Home 64-bit Microsoft® Windows 11 Pro 64-bit Ubuntu® 20.04 LTS, 64-bit (Laptop only)
GRAPHICS^{2,17}	Intel® Graphics	Intel® Graphics
MEMORY OPTIONS^{1,2,3}	Up to 64 GB LPDDR5x SDRAM 6400 MT/s (on board)	Up to 64 GB LPDDR5x SDRAM 6400 MT/s (on board)
STORAGE OPTIONS^{1,3}	Up to 2 TB, M.2 2230, TLC PCIe Gen4 NVMe, SSD 512 GB, M.2 2230, TLC PCIe Gen4 NVMe Self Encrypting Opal 2.0, SSD	Up to 2 TB, M.2 2230, TLC PCIe Gen4 NVMe, SSD 512 GB, M.2 2230, TLC PCIe Gen4 NVMe Self Encrypting Opal 2.0, SSD
SECURITY¹	TPM 2.0 FIPS-140-2 Certified / TCG Certified Intel ME Verification - Verifies the integrity of critical firmware using a secure off-host source. Requires Intel vPro. Chassis intrusion switch - Remotely detects hardware tampering and is integrated with Dell SafeBIOS Indicators of Attack. Optional Windows Hello compliant fingerprint reader in power button Optional Face IR camera (Windows Hello compliant) with ExpressSign-in (Presence detection) Camera Shutter Optional Security Hardware Authentication Bundles 1: Touch Fingerprint Reader (in Power Button)	TPM 2.0 FIPS-140-2 Certified / TCG Certified Intel ME Verification - Verifies the integrity of critical firmware using a secure off-host source. Requires Intel vPro. Chassis intrusion switch - Remotely detects hardware tampering and is integrated with Dell SafeBIOS Indicators of Attack. Optional Windows Hello compliant fingerprint reader in power button Optional Face IR camera (Windows Hello compliant) with ExpressSign-in (Presence detection) Camera Shutter Optional Security Hardware Authentication Bundles 1: Touch Fingerprint Reader (in Power Button)
DOCKING¹	(Docks are optional, sold separately) Dell Thunderbolt™ Dock - WD22TB4 Dell Performance Dock - WD19DCS Dell USB-C Dock - WD19S Dell Universal Dock - UD22 Dell Dual Charge Dock - HD22Q	(Docks are optional, sold separately) Dell Thunderbolt™ Dock - WD22TB4 Dell Performance Dock - WD19DCS Dell USB-C Dock - WD19S Dell Universal Dock - UD22 Dell Dual Charge Dock - HD22Q
CONNECTIVITY OPTIONS¹	Microsoft Modern Standby Compliant Wireless LAN Options¹: Intel® BE200 Wi-Fi 7 2x2, BT 5.4 Wireless Card Mobile Broadband Options¹: 5G - Qualcomm Snapdragon X62 Global 5G Modem (DW5932e), eSIM, WW 5G - Qualcomm Snapdragon X62 Global 5G Modem (DW5932e), eSIM, AT&T, T-Mobile, Verizon 5G - Qualcomm Snapdragon X62 Global 5G Modem (DW5932e), Non-eSIM, China only	Microsoft Modern Standby Compliant Wireless LAN Options¹: Intel® BE200 Wi-Fi 7 2x2, BT 5.4 Wireless Card Mobile Broadband Options¹: 5G - Qualcomm Snapdragon X62 Global 5G Modem (DW5932e), eSIM, WW 5G - Qualcomm Snapdragon X62 Global 5G Modem (DW5932e), eSIM, AT&T, T-Mobile, Verizon 5G - Qualcomm Snapdragon X62 Global 5G Modem (DW5932e), Non-eSIM, China only
CAMERA OPTIONS¹	5MP IR Camera Experiences: ExpressSign-in™, Intelligent Privacy, low light capability + Temporal Noise Reduction + Intel IPU6 + Proximity Sensor + Intel Camera Sensing Technology + Camera Shutter	5MP IR Camera Experiences: ExpressSign-in™, Intelligent Privacy, low light capability + Temporal Noise Reduction + Intel IPU6 + Proximity Sensor + Intel Camera Sensing Technology + Camera Shutter
AUDIO & SPEAKERS¹	2 x Top Firing Premium Speakers, 2 x bottom firing Premium Speakers, Waves MaxxAudio Pro, Smart Amplifier Intelligent Audio with Neural Noise Cancellation	2 x Top Firing Premium Speakers, 2 x bottom firing Premium Speakers, Waves MaxxAudio Pro, Smart Amplifier Intelligent Audio with Neural Noise Cancellation
MICROPHONE¹	2 x Noise Canceling Microphones	2 x Noise Canceling Microphones
BATTERY OPTIONS^{1,6}	3 Cell, 57Wh ⁶ , Li-ion, ExpressCharge 1.0™, ExpressCharge Boost™ 3 Cell, 57 Wh ⁶ , Li-ion, ExpressCharge 1.0™, Long Life Cycle, 3-year limited hardware warranty 2 Cell, 38Wh ⁶ , Li-ion, ExpressCharge 1.0™, ExpressCharge Boost™ 2 Cell, 38 Wh ⁶ , Li-ion, ExpressCharge 1.0™, Long Life Cycle, 3-year limited hardware warranty	3 Cell, 57Wh ⁶ , Li-ion, ExpressCharge 1.0™, ExpressCharge Boost™ 3 Cell, 57 Wh ⁶ , Li-ion, ExpressCharge 1.0™, Long Life Cycle, 3-year limited hardware warranty 2 Cell, 38Wh ⁶ , Li-ion, ExpressCharge 1.0™, ExpressCharge Boost™ 2 Cell, 38 Wh ⁶ , Li-ion, ExpressCharge 1.0™, Long Life Cycle, 3-year limited hardware warranty
POWER OPTIONS¹	60W AC adapter, Type-C, Ultralight Mini 60W AC Ultralight, Type-C, Mini adapter, 2-pin (Japan only) 65W AC adapter, USB Type-C, 100W AC adapter, Type-C	60W AC adapter, Type-C, Ultralight Mini 60W AC Ultralight, Type-C, Mini adapter, 2-pin (Japan only) 65W AC adapter, USB Type-C, 100W AC adapter, Type-C
PORTS & SLOTS^{1,17}	2 x USB Type-C Thunderbolt™ 4.0 with Power Delivery & DisplayPort 2.1 1 x USB 3.2 Gen 1 with Power share 1 x HDMI 2.1 1x Optional external uSIM card tray (WWAN only) 1x Optional Touch Fingerprint Reader in Power Button 1 x Universal Audio jack Wedge Shaped Lock Slot	2 x USB Type-C Thunderbolt™ 4.0 with Power Delivery & DisplayPort 2.1 2 x USB 3.2 Gen 1 with Power share 1 x HDMI 2.1 1x Optional external uSIM card tray (WWAN only) 1x Optional Touch Fingerprint Reader in Power Button 1 x Universal Audio jack Wedge Shaped Lock Slot
TOUCHPAD	Precision Clickpad with multi-touch gesture support Collaboration Touchpad	Precision Clickpad with multi-touch gesture support Collaboration Touchpad
INPUT¹	10-Finger Touch Display Collaboration Touchpad or Precision Clickpad with multi-touch gesture support Spill Resistant Non-Backlit Keyboard Spill Resistant Battery-saving Mini-LED Backlit Keyboard	10-Finger Touch Display Collaboration Touchpad or Precision Clickpad with multi-touch gesture support Spill Resistant Non-Backlit Keyboard Spill Resistant Battery-saving Mini-LED Backlit Keyboard

FEATURE	TECHNICAL SPECIFICATION	TECHNICAL SPECIFICATION
MODEL NUMBER	Latitude 7350 Ultraight	Latitude 7450 Ultraight
SENSORS¹	Gyroscope, Accelerometer, GPS (via WWAN Card only), Ambient Light Sensor; Adaptive Thermal Performance (via Gyroscope/Accelerometer), Dell ExpressSign-In (via Camera-based proximity), Wake/Power on with lid open (via Hall sensor) *vaires by size/model	Gyroscope, Accelerometer, GPS (via WWAN Card only), Ambient Light Sensor; Adaptive Thermal Performance (via Gyroscope/Accelerometer), Dell ExpressSign-In (via Camera-based proximity), Wake/Power on with lid open (via Hall sensor)* vaies by size/model
DIMENSIONS & WEIGHT^{1,15}	Height (rear): 0.69 in. (17.60 mm) Height (front): 0.66 in. (16.67 mm) Width: 11.77 in. (299 mm) Depth: 8.38 in. (212.9 mm) Starting Weight: 2.18 lbs. (0.989 kg)	Height (front): 0.68 in. (17.15 mm) Height (rear): 0.71 in. (17.95 mm) Width: 12.32 in. (313.00 mm) Depth: 8.67 in. (220.20 mm) Starting Weight: 2.33 lbs. (1.058 kg)
WHAT'S IN THE BOX	Laptop Adapter of your choice Power Cable Documentation - Quick Start Guide	Laptop Adapter of your choice Power Cable Documentation - Quick Start Guide



Leading the industry in sustainable practices to reduce the environmental impact of our products and packaging.

Learn more: Dell.com/sustainable-devices

FEATURE	TECHNICAL SPECIFICATION	DESCRIPTION
MODEL NUMBER ¹	Latitude-7x50	
SUSTAINABLE MATERIALS ¹	<p>Post-consumer recycled plastic (PCR) and closed loop ITE derived plastic - chassis</p> <p>Closed loop ITE derived plastic-NA Post-consumer recycled plastic²: 7350 (Standard and Ultralight): 50% in the bottom Cover Inner Frame and Battery Frame 7450/7650 (Standard): 35% in bottom Cover Inner Frame, Battery Frame, 180 Hinge Cap, Palm rest Inner Frame, LCD Magnet Frame, 2-in-1 : CM Frame, 2-in-1 Bezel and Palm rest Dummy Cap 7450: 35% in 180 Hinge Cap and Palm rest cover Dummy Cap</p> <p>Post-consumer recycled plastic (PCR) - power adapter³ (65-Watt): 95% in adapter case and AC inlet (100-Watt): 90% in adapter case (60 Watt): 50% in adapter case</p> <p>Recycled aluminum - power adapter (65-Watt): 98% recycled aluminum in thermal shielding³</p> <p>Recycled and low emissions aluminum: 50% recycled and 50% low-emissions aluminum in the chassis (does not apply to Ultralight configurations)²</p> <p>Recycled magnesium: 90% recycled magnesium in the chassis²</p> <p>Recycled copper - power adapter (100-watt): 50% recycled copper in adapter cable</p> <p>Recycled cobalt: 50% in battery²</p> <p>Recycled or renewable packaging materials 100% recycled, renewable and recyclable packaging¹¹</p>	<p>Post-consumer recycled plastic is plastic waste generated by households, industrial, commercial or institutions repurposed in the PC design. Closed loop plastic is reclaimed plastic from any disposed IT product repurposed in the PC design.</p> <p>Recycling aluminum helps divert material from landfills, where it would otherwise contribute to the growing problem of waste disposal. Aluminum is durable and does not degrade during the recycling process, making it a material that can be recycled repeatedly.</p> <p>The combination of using low emissions aluminum which is aluminum derived from a hydropower source and recycled aluminum helps reduce the carbon footprint of the material by up to 90%³</p> <p>Recycling magnesium helps conserve natural resources by reducing the demand for virgin magnesium extracted from minerals like dolomite or magnesite. The extraction and refinement of magnesium from its ore can be energy-intensive, making recycling magnesium a more sustainable option</p> <p>Recycling copper helps preserve finite natural resources because it reduces the need for extensive mining and extraction of copper ore that is a more energy intensive process</p> <p>Majority of recycled cobalt used in PC batteries is sourced from the EV batteries and the remainder is sourced from consumer electronics. Virgin cobalt resources are fast depleting and using recycled cobalt helps build a circular economy. Using recycled cobalt is a less energy intensive process and produces lesser waste than mining virgin cobalt</p> <p>Using recycled or renewable materials lowers waste and helps lower environmental impact. Materials may include recycled content and/or renewable content, in the form of sustainably forested fibers.</p>
ECO-LABELS ^{1,7}	<p>EPEAT Climate+™ Yes</p> <p>EPEAT Gold</p> <p>TCO Certified, Gen 9 Yes</p> <p>Energy Star 8.0 Yes</p>	<p>This is a product level designation for EPEAT-registered products which meet the industry's best climate criteria.</p> <p>Meeting globally recognized eco-label certifications for sustainable IT, our customers can trust that Dell products adhere to the highest energy-efficiency specifications and other climate-related standards. Product registry: https://www.epeat.net/</p> <p>TCO Certified is a leading sustainability certification for IT products, with a comprehensive system of up-to-date criteria and independent verification. Product registry: https://tco certified.com/product-finder/</p> <p>Energy Star 8.0 is a specification recognizing the most energy-efficient PC's, backed by Environmental Protection Agency (US).</p>
MULTI-PACK SHIPPING ^{1,8}	Dell Multi-pack: 7350 7450	Dell Multi-pack offers a simpler, more efficient unboxing experience vs. single pack products, with less packaging waste and better pallet optimization for transportation.
ASSET RECOVERY SERVICES ⁶	Asset Recovery Services Yes	Asset Recovery Services helps our customers resell, recycle or return-to-lease legacy IT equipment in a secure and sustainable manner, while unlocking value that can be put towards future innovation.
GLOBAL COMPLIANCE	For global compliance to regulations worldwide please visit dell.com/support	
REGULATORY ^{4,6}	Product Safety, EMC and Environmental Datasheets Dell Regulatory Compliance Home Page Dell and the Environment	



Dell Optimizer, our AI-based optimization software, learns and responds to the way you work providing improved application and device performance, clearer audio and more.

Learn more: Dell.com/Optimizer

FEATURE	TECHNICAL SPECIFICATION	DESCRIPTION
MODEL NUMBER	Latitude-7x50	
DELL OPTIMIZER	Power Optimization	Intelligent features to protect battery life and delivery energy savings. AI-based Dynamic Charge Policy adapts to usage behavior to apply optimal charge setting. Intelligent Battery Extender preserves runtime by making system adjustments when battery is low. Advanced Charge will charge battery before start of day and prevent overcharging. ExpressCharge will provide up to 90% charge in one hour. ⁹ Select lower energy-cost times of day to charge with Peak Shift. Thermal settings (optimized, cool, quiet, ultra performance) to balance PC performance and fan noise. Battery health report. Critical firmware alerts and notifications.
	Intelligent Audio	AI-based neural noise technology removes intrusive background sounds, echoes, and reverb caused by room acoustics from all ends of conference calls as well as mutes all background noises when no speech is detected. Will also provide automated tuning for optimized sound quality and on-screen notifications if voice quality drops in conference calls.
	Presence Detection	Sensors detect your presence, and onlookers, to conserve battery runtime and protect screen privacy. Wake on Approach awakens system and works with Windows Hello to sign you in, hands free. Look Away Dim darkens your screen and Walk Away lock turns off your display helping protect runtime and provide screen privacy. Keep Alive feature won't let your screen dim when you are still present but are not actively engaging with your PC. Onlooker Detection will alert you or obscure your screen to provide privacy.
	Network Optimization	Automatically switches to the best allowable Wi-Fi network when congestion is detected and uses multiple wired and wireless network connections to transfer data up to 2x faster and improve download speed. ¹⁰ Allocates the maximum bandwidth to conference application when you are on a call.
	Intelligent Ecosystem	Convenient access to Dell Peripheral Manger and Dell Display Manager for customization settings and controls for your Dell Peripherals and your Dell Monitor.



Improve fleet-wide security with hardware and software protections from Dell Trusted Workspace.

Learn more: Dell.com/endpoint-security

FEATURE	TECHNICAL SPECIFICATION	DESCRIPTION
MODEL NUMBER	Latitude-7x50	
HARDWARE & FIRMWARE SECURITY (INCLUDED)	Dell Trusted Device Application	Generates insights into the security state of a platform, monitoring changes to BIOS attributes, detecting possible tampering of BIOS firmware, and more.
	Dell SafeBIOS	Verify the integrity of the BIOS with tamper detection and secure, off-host BIOS image capture.
	Dell SafeBIOS Indicators of Attack	Scan for behavior-based threats for early detection by enabling telemetry integration with popular third-party security and endpoint management solutions. Includes Microsoft Intune, Carbon Black Cloud, CrowdStrike, Splunk.
	Dell SafeBIOS Common Vulnerabilities & Exposures (CVE) Detection	Identify and address known BIOS vulnerabilities and provides recommendations how to fix them. *Available early 2024.
HARDWARE & FIRMWARE SECURITY (OPTIONAL)	Dell SafeID	Secure end-user credentials. This unique hardware-based security solution provides a hardened and secure bank for storing and processing user credentials. Dependent on model. Credential security options may include: <ul style="list-style-type: none"> Secure interaction with Imprivata for authenticating credentials on multi-user devices Finger Print Reader in Power Button tied to ControlVault 3.0+ ControlVault 3 Advanced Authentication with FIPS 140-2 Level 3 Certification Contacted Smart Card and ControlVault 3.0+ Contactless Smart Card, NFC, and ControlVault 3.0+ FIPS 201 Full Scan Finger Print Reader and ControlVault Trusted Platform Module (TPM) 2.0 discrete FIPS 140-2 certification for TPM
	Dell Secured Component Verification	Provides assurance that the device and its components remain secure from factory to first boot. On-device and cloud-based options available. Availability varies by region.
	Tamper-evident packaging	Detect tampering with this supply chain assurance offering. Availability varies by region.
	Hard drive wipes	Sanitize the hard drive in accordance with National Institute of Standards and Technology (NIST) guidelines with this supply chain assurance offering. Availability varies by region.
	Intel ME Verification	Verify the integrity of critical firmware using a secure off-host source. Requires Intel vPro.
	Chassis intrusion switch	Remotely detects hardware tampering and is integrated with Dell SafeBIOS Indicators of Attack.
	Wedge-shaped lock slot	Device locking option helps reduce the risk of a data breach. Standard slot that can be paired with a standard security cable lock. Spec varies by model: <ul style="list-style-type: none"> Dell Fixed Workstations (Desktops): Kensington Security Slot™ (T-bar) Dell Laptops: Kensington Security Slot™ (Wedge)
	Fingerprint reader	Fingerprint reader in Power button tied to ControlVault 3+ secures end-user credentials.
	OPAL drive / Self-encrypting drive (SED)	Hardware-based full disk encryption that protects user data without storing encryption keys in RAM where it can be accessed by malicious parties.
	SPI Flash Tamper Detection Circuit	Detects and prevents tampering with BIOS SPI flash chips on the motherboard.
SOFTWARE SECURITY (OPTIONAL)	Dell SafeGuard & Response: CrowdStrike, Carbon Black, Secureworks	Threat detection and response/remediation
	Dell SafeData: Absolute	Self-healing for applications and networks
	Dell SafeData: Netskope	Cloud and network data protection
	McAfee Business Protection	Simple, automated, all-in-one security made for small businesses



Securely manage & optimize your endpoints and deliver end-user productivity with Dell Manageability Solutions.

Learn more: Dell.com/command

FEATURE	TECHNICAL SPECIFICATION	DESCRIPTION
MODEL NUMBER¹	Latitude-7x50	
MANAGEABILITY SOLUTIONS (INCLUDED)	Dell Client Command Suite	Streamline how you deploy drivers, configure BIOS, monitor devices, and manage updates.
	Dell Trusted Update Experience	Simplify how you update your endpoints with latest BIOS, driver, and firmware versions.
	DellSupport Assist - Home, Business, OS Recovery	



Modernize IT with comprehensive lifecycle services and support.

Learn more: Dell.com/support

FEATURE	TECHNICAL SPECIFICATION	DESCRIPTION
MODEL NUMBER	Latitude-7x50	
SUPPORT SERVICES (OPTIONAL)^{5,6}	ProSupport for PCs	Hardware break/fix with next business day service, 24x7 in-region technical support on hardware and software issues. Includes access to SupportAssist for proactive issue resolution and AI-powered fleet insights.
	ProSupport Plus for PCs	Hardware break/fix with next business day service, 24x7 priority access to in-region technical support for hardware and software issues PLUS Accidental Damage coverage, Keep Your Hard Drive and a Service Account Manager (with 500 devices). Includes access to SupportAssist for proactive and predictive automations and AI-powered fleet insights.
	ProSupport Flex for PCs	Flexible options to supplement in-house IT (1,000 device requirement) - Change to: Hardware break/fix with next business day service, 24x7 in-region technical support on hardware and software issues and a Service Account Manager plus the OPTION to choose Accidental Damage coverage or Keep Your Hard Drive. Includes access to SupportAssist for proactive and predictive automations and AI-powered fleet insights.
DEPLOY SERVICES (OPTIONAL)⁶	ProDeploy Flex for Client	ProDeploy Flex allows customers with specific deployment needs to mix and match standardized options to fit their needs.
	ProDeploy Essentials for Client	From initial PC setup and preparation to data transfer, whether remote or onsite, ProDeploy Essentials is geared toward limited interruption for the end user.
	ProDeploy for Client	ProDeploy partners with IT to apply common customization of hardware settings and software so systems meet IT specifications for security, software and network protocols.
	ProDeploy Plus for Client	With ProDeploy Plus, we bring it all together to take care of end-user needs and efficiently meet IT specifications while working with IT teams to plan, configure and deploy systems that are ready-to-work, using modern solutions.
	Asset Recovery Services	Securely and responsibly retire legacy IT equipment and unlock value to fund new innovation and help your business grow.
	Logistic Services	Warehouse your products at our facility for up to 180 days and take delivery on the day and time that best meets your needs. Schedule your IT resources to be in place when you need them – on the exact day the new systems arrive. Available in NA, EMEA and APJ.
	Configuration Services	Image Load, Asset Tag, BIOS Customization, HDD Partitioning, Software Installation, Laser Etch, Data Security.
MANAGE SERVICES (OPTIONAL)⁶	Lifecycle Hub	Combines warehousing and inventory management with configuration services and deployment expertise into one end-to-end solution. With included return, repair, and refurbishing services, Dell Lifecycle Hub helps keep employees working, maximizes use of device inventory and frees up IT resources to focus on business priorities. Available in US, Austria, Belgium, Czech Republic, Denmark, Finland, France, Germany, Greece, Ireland, Italy, Luxembourg, Netherlands, Poland, Portugal, Slovakia, Spain, Sweden, UK.
	Managed Detection and Response Pro Plus	A fully-managed, 360-degree security operations solution designed to prevent threats, quickly detect and contain attack attempts, and help recover your IT environment in the event of a breach.

FEATURE	TECHNICAL SPECIFICATION
MODEL NUMBER ¹	Latitude 7x50
WARRANTY ^{4,6}	1 Year Basic Warranty with Hardware Onsite Service 2-5 Year Basic Warranty Extension
SERVICES TERMS ⁶	1-5 Year ProSupport Next Business Day Onsite Service 1-5 Year ProSupport Plus for Client
ACCIDENTAL DAMAGE ¹	1-5 Year Accidental Damage Services

Legal disclaimers

Page No 1

1. Dell has the industry's most secure commercial PCs with built-in below the OS security features that our competitors cannot match. Based on Dell internal analysis, September 2023. Applicable to PCs on Intel processors. Not all features available with all PCs. Additional purchase required for some features.
2. Based on Dell analysis, November 2023. Dell Optimizer not available in OptiPlex 3000 series, Latitude Chromebook Enterprise, and Linux-based devices. Feature availability and functionality may vary by model. For more details visit: <https://www.delltechnologies.com/asset/en-us/solutions/business-solutions/technical-support/dell-optimizer-features-availability-matrix.pdf.external>
3. Based on Dell internal analysis, January 2024. Most-manageable commercial PCs when comparing the systems management capabilities of Dell Update Processes, Dell Manageability Solution capabilities and integrations with 3rd Party Management Solutions, with competitor update processes, systems management solution capabilities and integrations with 3rd party management solutions. 3rd Party Management Solutions - Microsoft Intune, Workspace ONE, are separate purchases. Intel vPro, to support out-of-band systems management, is an additional system configuration upgrade.

Page No 2

1. Applies to Product launched March 2024. Based on Dell analysis of publicly available information, October 2023
2. Collaboration icons are only visible during Zoom or Microsoft Teams calls. Compatible video conferencing platforms are subject to change.
3. Dell has the industry's most secure commercial PCs with built-in below the OS security features that our competitors cannot match. Based on Dell internal analysis, September 2023. Applicable to PCs on Intel processors. Not all features available with all PCs. Additional purchase required for some features.
4. Applies to the Latitude 7350 Detachable and the Latitude 7350 that uses the 57Whr battery. Based on internal analysis, February 2024
5. Applies to the Latitude 7450 Ultralight WLAN configuration and the 7350 Ultralight and excludes Japan. WWAN configuration (7450 Ultralight) is estimated to start shipping with 90% recycled magnesium in May 2024. Based on internal analysis, January 2024
6. 7650 and 7450 Mainstream. Based on internal analysis, January 2024. 7350 MS: Shipping timelines may vary based on region and laptop configuration.
7. Based on EPEAT Climate+ Designations achieved in all applicable countries. EPEAT registered where applicable. EPEAT registration varies by country. See <http://www.epeat.net/> for registration status and tier levels.
8. High-Efficiency Video Coding (HEVC) content playback on the system and on an external display as well as HEVC content streaming is supported on configurations with a discrete graphics card, built in 4K panel, Dolby Vision or CyberLink Blue-ray player; for other configurations HEVC content playback on the system will require a separate purchase and download of software HEVC codec or third-party media players.
9. Latitude 7450 and Latitude 7440 tested across multiple configurations. Battery life results were compared for like-to-like configs (i.e., same or similar memory, storage, display, battery, etc.) except for CPU.

Page No 3

1. High-Efficiency Video Coding (HEVC) content playback on the system and on an external display as well as HEVC content streaming is supported on configurations with a discrete graphics card, built in 4K panel, Dolby Vision or CyberLink Blue-ray player; for other configurations HEVC content playback on the system will require a separate purchase and download of software HEVC codec or third-party media players.
2. Based on internal testing on generic devices, as measured by system on chip (SOC) package power during 1x1 Zoom call with background blur on NPU on Intel Core Ultra 7 165H processor comparing to 13th Gen Core i7 1370P processor. Learn more here: [Intel® Core™ Ultra Processors - 1 | Performance Index](#)
3. Based on internal testing on generic devices, as measured by an AI video editing workload using Adobe Premier Pro Beta on Intel Core Ultra 7 165H processor, comparing to 13th Gen Intel Core i7-1370P processor. Learn more here: [Intel® Core™ Ultra Processors - 1 | Performance Index](#)
4. <1% CPU usage when running on-device AI based security like CrowdStrike. Based on Intel and CrowdStrike testing. Results may vary. These results should not be taken with the understanding that the ratio of CPU usage, memory usage, or inference time between CPU only and CPU+NPU will remain the same with a different/smaller model – even one using the same neural architecture as the model under test. This is also not a general claim about the performance of other models on the NPU, even other CNNs. The result should only be taken as an understanding that, for this specific Convolutional Neural Network (CNN) model developed by CrowdStrike, a smaller distilled model of the same design would likely have an average inference time after the first of <= ~25ms and a CPU overhead <= ~1%. Note that featurization/tokenization were not measured as part of this test. The model was tested using the OpenVINO framework. Learn more here: <https://www.crowdstrike.com/blog/crowdstrike-and-intel-research-advance-endpoint-security/> Timing of feature delivery and availability varies by market and device. Use Copilot with a Microsoft Account or use Copilot with commercial data protection at no additional cost by signing into a work or school account (Microsoft Entra ID) with Microsoft 365 E3, E5, F3, A3 or A5 for faculty, Business Premium, and Business Standard. Coming to more Entra ID users over time.

Page No 4

1. Based on internal analysis, January 2024.
 - a. Post-consumer recycled plastic:
 - i. 7340 (Standard and Ultralight): 50% in the bottom Cover Inner Frame and Battery Frame
 - ii. 7440/7640 (Standard): 35% in bottom Cover Inner Frame, Battery Frame, 180 Hinge Cap, Palm rest Inner Frame, LCD Magnet Frame, 2-in-1: CM Frame, 2-in-1 Bezel and Palm rest Dummy Cap
 - b. 7440 Ultralight: 35% in 180 Hinge Cap and Palm rest cover Dummy Cap
 - c. 50% recycled cobalt in battery applies to Latitude 7x50 shipping with 57 whr battery. 42% bio-based plastic in the bottom feet.
 - d. Recycled Magnesium: Applies to the Latitude 7450 Ultralight WLAN configuration and the 7350 Ultralight and excludes Japan. WWAN configuration ((7450 UL) is estimated to start shipping with 90% recycled magnesium in May 2024. Based on internal analysis, January 2024
 - e. Recycled and low emissions aluminum: 7650 and 7450 Mainstream. Based on internal analysis, January 2024. 7350 MS: Shipping timelines may vary based on region and laptop configuration.
2. Based on internal analysis, February 2024
3. Contains at least 92.9% recycled content and at least 6.1% renewable materials. Renewable materials in the form of sustainably forested fibers. Percentages may vary slightly by region. Excludes optional items added to order and included in box. Paper packaging materials can be recycled via municipal recycling, where available. System bag is made from recycled plastic and can be recycled along with other thin plastics. See local recycling guidelines.
4. Excluding Latitude 7650. Based on internal analysis, January 2024.
5. Based on internal analysis, January 2024. Based on EPEAT Climate+ Designations achieved in all applicable countries. EPEAT registered where applicable. EPEAT registration varies by country. See <http://www.epeat.net/> for registration status and tier levels.

Page No 5

1. Based on Dell analysis, November 2023. Dell Optimizer not available in OptiPlex 3000 series, Latitude Chromebook Enterprise, and Linux-based devices. Feature availability and functionality may vary by model. For more details visit: <https://www.delltechnologies.com/asset/en-us/solutions/business-solutions/technical-support/dell-optimizer-features-availability-matrix.pdf.external>
2. Based on A Principled Technologies Report commissioned by Dell that ran PC performance benchmarks on Dell Latitude 9430 laptops and OptiPlex 7400 all-in-one desktop PCs: Improve PC app performance, battery charging, and end-user experiences with Dell Optimizer, June 2023.
3. ExpressConnect available with Dell Optimizer software version 2.0 and onwards. Download the latest at <https://www.dell.com/support/home>. Simultaneous multi-network connection (or connection-based teaming) is a new connectivity feature under ExpressConnect. It simultaneously sends and receives data and video traffic using two or more wired or wireless connections. Based on Dell internal analysis, October 2021.
4. Best network selection based on signal strength, channel congestion, router type and others. Network suggestions based on user credentials.
5. This is based on a Dell internal study, testing power and performance within our Dell Optimizer power module. White paper published November 2022 <https://www.delltechnologies.com/asset/en-us/solutions/business-solutions/industry-market/maximizing-power-efficiency-with-dell-optimizer-a-case-study.pdf>

Page No 6

1. IDC Worldwide Quarterly PC Monitor Tracker, Q3 2023

Page No 7

1. Dell has the industry's most secure commercial PCs. (Claim Details: Cover page - #1)
2. Dell publishes a device drivers and downloads release schedule. Source: Source: Based on internal analysis, May 2023. When comparing publicly available device drivers and downloads release schedules published by the Top 5 PC vendors, as of May 2023.
3. Dell performs integrated validation of all driver and BIOS modules in an update. Source: Based on Dell internal analysis, May 2023, of integrated validation approaches of Top 5 PC vendors, for driver and BIOS modules in an update, by currently shipping and future-state product system images.
4. Only Dell offers off-host BIOS and firmware verification, providing greater security than other PCs. Details: The latest Intel vPro based PCs provide an estimated 70% attack surface reduction compared to four-year-old devices. Based on IOActive's "Intel vPro 13th Gen Attack Surface Study" published March 2023 (commissioned by Intel), which evaluates Intel vPro devices powered by 13th Gen Intel Core processors against four-year-old Intel-based PCs on Windows OS. Details at www.intel.com/performancevpro. Results may vary.
5. Most Manageable Commercial PC. Based on Dell internal analysis, January 2024. Details: Most manageable commercial PC when comparing the systems management capabilities of Dell Update Processes, Dell Manageability Solution capabilities and integrations with 3rd Party Management Solutions, with competitor update processes, systems management solution capabilities and integrations with 3rd party management solutions. 3rd Party Management Solutions - Microsoft Intune, Workspace ONE, are separate purchases. Intel vPro, to support out-of-band systems management, is an additional system configuration upgrade; and Dell has the industry's first:
 - a. Dell Command | Endpoint Configure for Microsoft Intune - the industry's first Binary Large Object (BLOB) package-based solution, for securely configuring & managing endpoints, using Microsoft Intune. Disclaimer: Industry's first device manageability solution to use a Binary Large Object (BLOB) package, recognized by Microsoft Intune, for secure endpoint configuration and management
 - b. Dell Client Command Suite – the industry's first Systems Management Solution to integrate with VMWare Workspace ONE, for secure BIOS, firmware, OS and update management of PCs, from the cloud. Disclaimer: Based on Dell internal analysis, July 2023
 - c. Dell Command | Intel vPro Out of Band– the industry's first hardware OEM systems management solution to integrate with Intel vPro - for remote management of systems, regardless of power-state. Disclaimer: Based on Dell internal analysis, November 2023.

Page No 8

1. Dell Technologies APEX offers the 1st and most comprehensive As-a-service portfolio that spans from multi-cloud to client devices. Source: Based on Dell internal analysis, April 2023. Payment solutions provided to qualified commercial customers by Dell Financial Services through Dell Technologies group companies or authorized business partners. Solutions may be changed without notice and are subject to product availability, eligibility, credit approval, acceptable documentation and local applicable law. Some solutions, including end of term purchase options, may not be available or may vary by country. Within the EU, the EEA, the UK and Switzerland certain solutions are provided by Dell Bank International d.a.c. and its local branches, including by Dell Bank International d.a.c Sucursal en España in Spain. Dell Bank International d.a.c. is regulated by the Central Bank of Ireland. Dell Technologies and Dell logos are trademarks of Dell Inc.
2. Dell Technologies processes 36TB of telemetry data per day. Source: Based on Dell internal analysis, November 2023.
3. ProDeploy Client Suite for PCs configures 30K PC daily. Source: Based on Dell internal analysis, April 2023.
4. ProSupport Suite for PCs saves 641 hours of IT admin time per year* (on recurring tasks for a 1,000-device fleet. *vs. a manual approach based on data extrapolated from hands-on testing). Source: Based on a Principled Technologies test report, "Simplify PC management and save IT admin time with an automated support service," dated September 2023. Testing commissioned by Dell, conducted in the United States. Actual results will vary. Full report: <https://facts.pt/PELu7Im>
5. Dell Premier offers up to 297% ROI, or return on investment, over a span of 4 years. Source: Based on a Forrester Total Economic Impact™ Study Commissioned by Dell Technologies and Intel, "The Total Economic Impact™ Of Dell Premier Solutions", August 2021. These findings were aggregated into a 15,000-employee composite organization to create a four-year financial model that calculates the likely ROI a company should expect by adopting Dell Premier. Actual results may vary. Full study <https://tools.totaleconomicimpact.com/go/dell/premiersolutions/>
6. Dell Technologies has recovered 2.6 billion pounds of electronics since 2007. Source: Based on Dell internal analysis of publicly available data, April 2023.

Page No 10-13

1. Offering may vary by country and by configuration and Operating System
2. Intel® Arc™ graphics - only available on selected Intel® Core™ Ultra 1xxH (H-series processors), powered systems with at least 16GB of system memory in dual channel configuration (2x8GB). Intel® graphics – used on Intel® Core™ Ultra 1xxU processors (U-series processors).
3. GB means 1 billion bytes and TB equals 1 trillion bytes; actual capacity varies with preloaded material and operating environment and will be less.
4. Limited Hardware Warranty: For copy of Limited Hardware Warranty, write Dell USA LP, Attn: Warranties, One Dell Way, Round Rock, TX 78682 or see www.dell.com/warranty
5. Hold
 - a. Dependent on model, uses Dell ControlVault Dedicated FIPS Level 3 security chip or Dell-unique FIPS 140-2 Trusted Platform Module to secure end user credentials.
 - b. Offer varies by region.
 - c. Requires Dell Trusted Device software.

6. The stated Watt Hour (Whr) is not an indication of battery life. Express Charge 1.0 (EC1.0) enables quick battery charging to 80% capacity in 60 min or 100% capacity in 120min. Express Charge 2.0 (EC2.0) enables quick battery charging to 80% capacity in 35min. Express Charge Boost (ECB) enables quick battery charging to 35% capacity in 20min. Charging patterns for EC1.0, EC2.0 and ECB are measured for the system in the shutdown state. Long life cycle battery has the charging pattern to enable longer life. Long-life cycle battery is capable of 3 years life, or 1000 discharge/charge cycles and Dell provides 3 years limited hardware warranty for this battery.
7. Requires Wyse Management Suite Pro. Requires Dell ThinOS (2303 or above) activation license with Wyse Management Suite Pro and Dell ProSupport for Software seat license sold separately. The Latitude All-in-One systems need to be configured with 8 GB Memory, 128 GB or higher capacity SSD/HDD and Ubuntu Linux with Dell Client Agent Enabler (DCA-Enabler). For more details, refer to the Dell ThinOS Installation and ThinOS Activation License User Guide on www.dell.com/support
8. Wi-Fi7/6e which has the 6Ghz band requires Windows 11 Operating system and compatible router. Router requires a separate purchase. WiFi 7/6E (6GHz) connectivity is only available in select locations. Check availability with your service provider. The Wi-Fi 7 card will operate on Wi-Fi 6E/6 speeds when Wi-Fi 7 is unavailable. Drivers for Wi-Fi 7 will be available mid-2024 (Win11 24H2 update). Dates are subject to change without notice. Ubuntu OS will not support Wi-Fi7 and will operate on WiFi 6/6E speeds when configured for WiFi7. The Bluetooth wireless card version may vary depending on the operating system that is installed on your computer.
9. Latitude product is BFR/PVC free, accessories like adapters and cables may not be BFR/PVC free. Dell is meeting the definition of BFR-/CFR-/PVC-free as set forth in the iNEMI Position Statement on the 'Definition of Low-Halogen Electronics (BFR-/CFR-/PVC-free)'. Plastic parts contain less than 1,000 ppm (0.1%) of bromine (if the Br source is from BFRs) and less than 1,000 ppm (0.1%) of chlorine (if the Cl source is from CFRs or PVC or PVC copolymers). All printed circuit board (PCB) and substrate laminates contain bromine/chlorine total less than 1,500 ppm (0.15%) with a maximum chlorine of 900 ppm (0.09%) and maximum bromine being 900 ppm (0.09%).
10. Mobile Broadband antenna and module (for 2-in-1 devices) available only at time of system purchase. Mobile Broadband subject to service provider's broadband subscription and coverage area; additional charges apply. eSim technology subject to regional carrier/service provider availability & service provider's data plan subscription; additional charges apply. Check availability with your service provider.
11. Onsite Service after Remote Diagnosis: Remote Diagnosis is determination by online/phone technician of cause of issue; may involve customer access to inside of system and multiple or extended sessions. If issue is covered by Limited Hardware Warranty (www.dell.com/warranty) and not resolved remotely, technician and/or part will be dispatched, usually within 1 business day following completion of Remote Diagnosis. Availability varies. Other conditions apply.
12. Dell Services: Availability and terms of Dell Services vary by region. For more information, visit www.dell.com/servicedescriptions.
13. Significant system memory may be used to support graphics, depending on system memory size and other factors.
15. Weights vary depending on configuration and manufacturing variability.
16. Available in US only
17. High-Efficiency Video Coding (HEVC) content playback on the system and on an external display as well as HEVC content streaming is supported on configurations with a discrete graphics card, built in 4K panel, Dolby Vision or CyberLink Blue-ray player; for other configurations HEVC content playback on the system will require a separate purchase and download of software HEVC codec or third-party media players.

Page No 14-18

1. Not all technical specifications available per system configuration. Offering may vary by region. Some items may be available after product introduction. For complete details, refer to the Owner's Manual published on www.dell.com/support.
2. Based on internal analysis, January 2024.
 - a. Post-consumer recycled plastic:
 - i. 7340 (Standard and Ultralight): 50% in the bottom Cover Inner Frame and Battery Frame
 - ii. 7440/7640 (Standard): 35% in bottom Cover Inner Frame, Battery Frame, 180 Hinge Cap, Palm rest Inner Frame, LCD Magnet Frame, 2-in-1: CM Frame, 2-in-1 Bezel and Palm rest Dummy Cap
 - b. 7440 Ultralight: 35% in 180 Hinge Cap and Palm rest cover Dummy Cap
 - c. 50% recycled cobalt in battery applies to Latitude 7x50 shipping with 57 whr battery. 42% bio-based plastic in the bottom feet.
 - d. Recycled Magnesium: Applies to the Latitude 7450 Ultralight WLAN configuration and the 7350 Ultralight and excludes Japan. WWAN configuration ((7450 UL) is estimated to start shipping with 90% recycled magnesium in May 2024. Based on internal analysis, January 2024
 - e. Recycled and low emissions aluminum: 7650 and 7450 Mainstream. Based on internal analysis, January 2024. 7350 MS: Shipping timelines may vary based on region and laptop configuration.
3. Based on internal analysis, February 2024.
4. Limited Hardware Warranty: For copy of Ltd Hardware Warranty, write Dell USA LP, Attn: Warranties, One Dell Way, Round Rock, TX 78682 or see www.dell.com/warranty.
5. Contains at least 92.9% recycled content and at least 6.1% renewable materials. Renewable materials in the form of sustainably forested fibers. Percentages may vary slightly by region. Excludes optional items added to order and included in box. Paper packaging materials can be recycled via municipal recycling, where available. System bag is made from recycled plastic and can be recycled along with other thin plastics. See local recycling guidelines.
6. Dell Services: Availability and terms of Dell Services vary by region. For more information, visit www.dell.com/servicedescriptions.
7. Based on internal analysis, January 2024. Based on EPEAT Climate+ Designations achieved in all applicable countries. EPEAT registered where applicable. EPEAT registration varies by country. See <http://www.epeat.net/> for registration status and tier levels.
8. Excluding Latitude 7650. Based on internal analysis, January 2024.
9. Based on A Principled Technologies Report commissioned by Dell that ran PC performance benchmarks on Dell Latitude 9430 laptops and OptiPlex 7400 all-in-one desktop PCs: Improve PC app performance, battery charging, and end-user experiences with Dell Optimizer, June 2023
10. Based on A Principled Technologies Report commissioned by Dell that ran PC performance benchmarks on Dell Latitude 9430 laptops and OptiPlex 7400 all-in-one desktop PCs: Improve PC app performance, battery charging, and end-user experiences with Dell Optimizer, June 2022
11. Contains at least 92.9% recycled content and at least 6.1% renewable materials. Renewable materials in the form of sustainably forested fibers. Percentages may vary slightly by region. Excludes optional items added to order and included in box. Paper packaging materials can be recycled via municipal recycling, where available. System bag is made from recycled plastic and can be recycled along with other thin plastics. See local recycling guidelines.

Technical specifications subject to change without prior notice. Product availability varies by country. Please contact your Dell representative for more information. Copyright© 2023 Dell Inc. or its subsidiaries. All Rights Reserved. Dell Technologies, Dell, EMC and Dell EMC are trademarks of Dell Inc. or its subsidiaries. Other trademarks may be trademarks of their respective owners.