



Compact design. Seamless connectivity.

Dell Pro Plus Compact Keyboard

MODEL: KB740



Conveniently switch

Seamlessly work across three devices using this Dell Pro Plus Compact Keyboard – KB740. The three-device connectivity provides maximum convenience with the two Bluetooth 5.0 and 2.4GHz wireless connection methods, allowing you to switch with a click of a button.



Simply reliable

Built to last, this keyboard has one of the longest battery lives at up to 36 months.¹ Dell Advanced Exchange Service² offers you added peace of mind, shipping you a replacement the next business day during your 3-year Limited Hardware Warranty³ period. Rigorous testing ensures that the keyboard works perfectly with your Dell systems.



Customize and manage

Tilt the keyboard to your desired angle so you can type comfortably, and then program the shortcut keys for easy navigation across your preferred applications or commands. The Dell Display and Peripheral Manager software lets you pair devices, program shortcuts, adjust DPI, check battery and connectivity status and deploy latest firmware updates easily.



¹ Based on Dell analysis of battery life usage model calculations, Nov. 2020. Results vary depending on use, operating conditions and other factors.

² Replacement part/unit dispatched, if needed, following completion of phone/online diagnosis. Fee charged for failure to return defective unit. Availability varies.

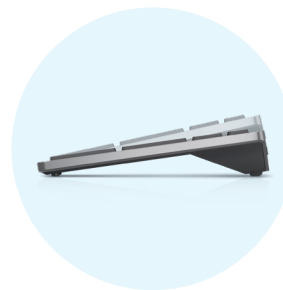
³ For a copy of the Limited Hardware Warranty, write to Dell USA LP, Attn: Warranties, One Dell Way, Round Rock, TX 78682 or see dell.com/warranty.

Compact design. Seamless connectivity.

Seamlessly switch between 3 devices anytime with the press of a key and enhance your productivity with its 36-month battery life.¹



Battery and connectivity indicators



Adjustable tilt

Tested and certified to work seamlessly with Dell systems

128-bit AES (Advanced Encryption Standard) encryption on keyboard helps protect your data transmission across your devices, providing you with a secure connection while typing.

Advanced Exchange Service gets you a replacement shipped the next business day should your existing one become faulty within the 3-year warranty period.²

¹ Based on Dell analysis of battery life usage model calculations, Nov. 2020. Results vary depending on use, operating conditions and other factors.

² Replacement part/unit dispatched, if needed, following completion of phone/online diagnosis. Fee charged for failure to return defective unit. Availability varies.

FEATURE	TECHNICAL SPECIFICATION
MODEL	Dell Pro Plus Compact Keyboard - KB740
COLOR	Titan Gray
CONNECTIVITY	Wireless - 2.4GHz or Bluetooth 5.0 ¹ Microsoft Swift Pair ²
BATTERY LIFE	36 months ³
OS SUPPORT	2.4Ghz <ul style="list-style-type: none">Windows 7, 8.1, 10 and 11; macOS; Linux (Red Hat Enterprise 8.0 /Ubuntu 18.4); Chrome; and Android OS Bluetooth <ul style="list-style-type: none">Windows 8.1, 10 and 11; macOS; Linux (Red Hat Enterprise 8.0 /Ubuntu 18.4); Chrome; and Android OS Dell Display and Peripheral Manager <ul style="list-style-type: none">Windows 10 build 17763 and above (x64-based)Windows 11 (x64-based)Windows 11 on ARM (arm64-based)
SOFTWARE	Dell Display and Peripheral Manager (Windows compatible) <ul style="list-style-type: none">Pair devicesProgram shortcut keysView battery/connectivity statusFirmware updates
WARRANTY	3-year Advanced Exchange Service ⁴
PACKAGE CONTENT	Keyboard USB Receiver Batteries (2 x AA) Documentation
TYPING MECHANISM	Scissors keys
PROGRAMMABLE KEYS	F1-F12
MULTIMEDIA KEYS	6 Multimedia Keys (Vol+, Vol-, Speaker Mute, Play/Pause, Forward, Backward)
TILT ADJUSTMENT	5° / 9°
DIMENSIONS	Height: 1.0 inch / 25.34 mm Length: 14.3 inches / 363.2 mm Width: 4.8 inches / 121.5 mm
WEIGHT (WITHOUT BATTERIES)	1.12 lbs / 506 g
SECURITY	128-bit AES encryption

1 System requirement: Bluetooth Low Energy technology.

2 Compatible with Windows 10, version 1803 onwards, and Windows 11.

3 Based on Dell analysis of battery life usage model calculations, Nov. 2020. Results vary depending on use, operating conditions and other factors.

4 Replacement part/unit dispatched, if needed, following completion of phone/online diagnosis. Fee charged for failure to return defective unit. Availability varies.

Technical specifications subject to change without prior notice. Product availability varies by country. Please contact your Dell representative for more information.

© 2025 Dell Inc. or its subsidiaries. All rights reserved. Dell Technologies, Dell, EMC, Dell EMC and other trademarks are trademarks of Dell Inc. or its subsidiaries. Other trademarks may be trademarks of their respective owners.