



# Dell Trusted Infrastructure

A modern, secure, resilient and intelligent technology foundation for your organization to help foster innovation.

Physical and software-defined systems, AI, multicloud environments, edge devices and as-a-service delivery define the infrastructure of the modern era – and this is changing everything we know about cybersecurity and cyber resilience.

At Dell, we believe IT security and resilience should embrace three core practice areas:

- Reducing the attack surface
- Detecting and responding to cyber threats
- Recovering from a cyberattack

all while utilizing zero trust principles to help advance your cybersecurity and resilience posture.

# Infrastructure for the modern era.

We live in a data-driven world. IT runs wherever the business takes it, and data is created and accessed anywhere, far from the centralized monolithic data centers of the past. Today, “infrastructure” means data storage and hyperconverged systems, servers, networking and data protection that may be physically distributed or delivered as-a-service but regardless of how IT infrastructure is consumed, at Dell, we believe it must be trusted by our customers and partners.

A trusted infrastructure operates everywhere with maximum flexibility and business agility without compromising security. It’s modern, resilient and flexible, supporting a zero trust approach or however you choose to secure and preserve your organization’s most vital digital assets.



## Modern

Designed for innovation, a modern infrastructure is highly distributed or delivered as-a-service and includes edge devices as well as multicloud environments to enable modern organizations.



## Resilient

To be resilient, solutions should be developed with a secure lifecycle. From components to systems to fully integrated solutions, a secure supply chain ensures the devices within your environment can be trusted.



## Intelligent

Intelligent infrastructure incorporates advancements such as AI, machine learning and automation, to enable you to scale your security posture with consistent governance and enforcement.



# Dell Trusted Infrastructure

Whether it is hardware or software, Dell Trusted Infrastructure is a family of secure and resilient IT solutions and services designed and built to provide confidence, control and scale.



**Protect**  
data and systems

---



**Enhance**  
cyber resiliency

---



**Overcome**  
security complexity



# Protect data and systems

Whether at the edge, on-premises or across multiple cloud providers, you can combat cyber threats to your organization's critical systems, applications and data – all from a single provider. Dell Trusted Infrastructure helps you enable zero trust principles by embedding security capabilities across our enterprise-wide line of storage, servers, hyperconverged, networking and data protection solutions.

Ensure that access to systems is secure, and threats are detected and neutralized. Our solutions include hardened devices and processes for an intrinsic security advantage everywhere data and applications live.

Protect edge to core to cloud through innovative solutions and best practices by combating risks with intelligent software and AI and machine learning to protect data, networks and systems.

Run your IT infrastructure with confidence that data is secure, whether at rest, at work, or on the move, by implementing pervasive security to help ensure the integrity and availability of critical data, applications and operations.

# Enhance cyber resiliency

Plan, prepare and practice recovery to lessen the impact of cyberattacks and resume operations rapidly with confidence. Dell Trusted Infrastructure provides automated workflows and software-defined solutions to protect critical systems, applications and data as your environments become more distributed.

Ensure that your data, systems and operations can withstand cyberattacks and you have the right help to recover in the event of an incident with a good IRR plan.

Maintain operational continuity and data visibility in the event of a cyber incident by aligning business processes to incident response and recovery with MDR capabilities.

Establish compliance and adhere to zero trust principles by applying modern technologies to strengthen access, authentication and authorization within a highly distributed remote workforce and multicloud environment.



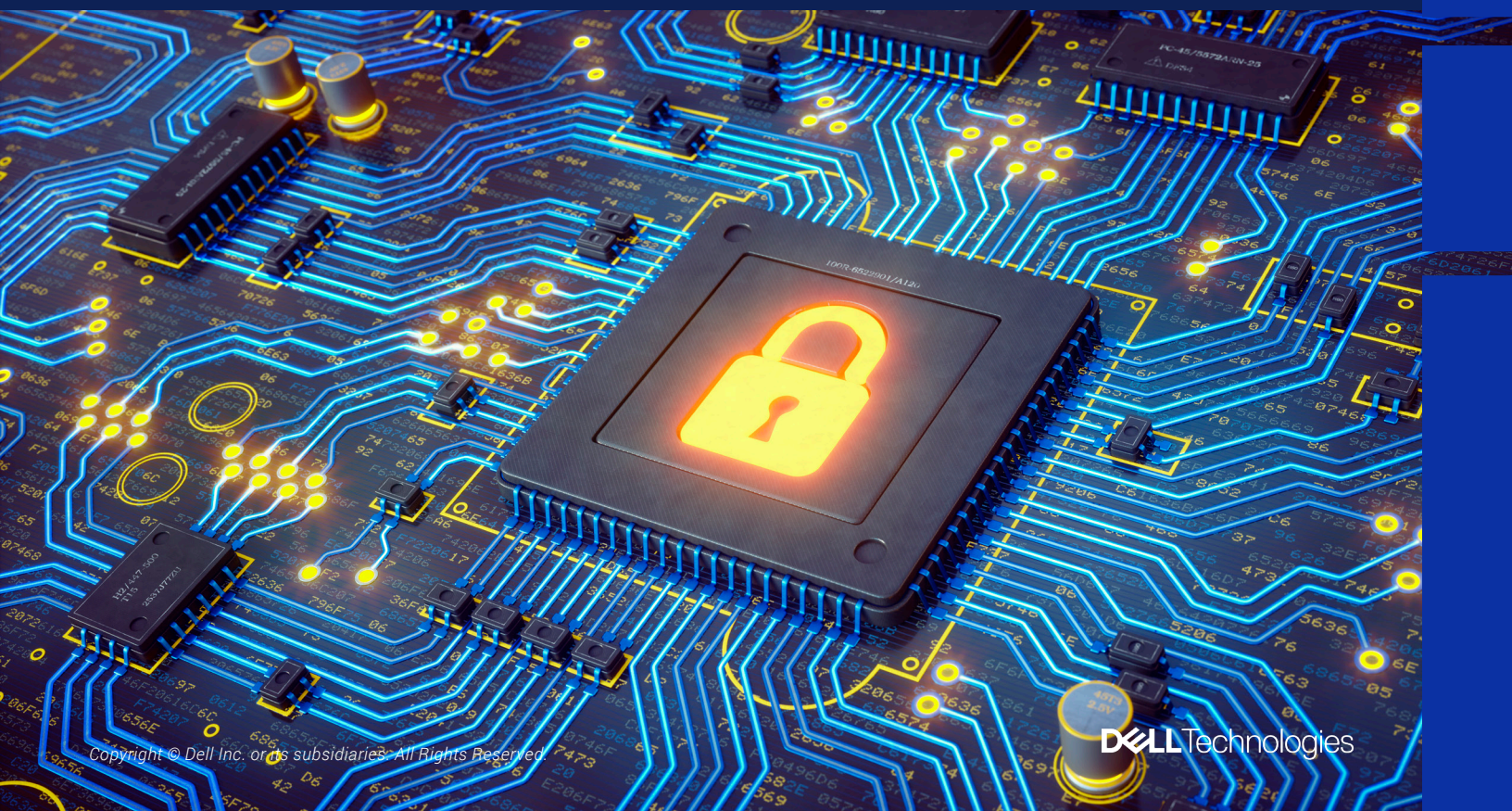
# Overcome security complexity

Modernize security operations and confidently build or expand your zero trust architecture in the face of increasing complexity. Dell Trusted Infrastructure provides automation orchestration and intelligent innovations that complement our hardware, firmware-based and software security features.

**Streamline your infrastructure** by reducing the number of security applications and vendors. As an enterprise-wide solution provider, Dell Technologies helps you consolidate security capabilities in your environment with end-to-end solutions. Now, you can work with one trusted partner who understands your challenges.

**Extend your security staff** with expert resources and services. Work with Dell security experts by utilizing our cybersecurity services and as-a-Service offerings to stretch your personnel resources and operationalize your expenses.

**Augment your existing security systems** and quickly scale your security strategy using automation and intelligence in place of manual, human operations.



# Trusted and modern security across your IT infrastructure, all from a single provider.

<h2>Dell Storage</h2> <p>Have peace of mind that your data is secure, protected and available.</p>	<p>Is it possible to have secure storage solutions along with comprehensive threat detection and response? Yes, it is. Our solutions overcome security complexity by aggregating threat intelligence and cascading it to upstream security platforms.</p>
<h2>Dell Servers</h2> <p>Meet today's threat landscape with a cyber resilient architecture that provides evolving security controls, features and solutions.</p>	<p>Be more cyber-resilient with built-in security at every product lifecycle phase. Silicon Root of Trust serves as an anchor and provides control over signed firmware, drift detection, BIOS recovery, systems management integration and supply chain assurance.</p>
<h2>Dell Networking</h2> <p>Strengthen security with multiple layers of defenses in hardware and software – at the edge and in the network.</p>	<p>A comprehensive and adaptable security strategy is the key to maintaining confidence and control in today's dynamic business landscape. By combining advanced architecture, rigorous security certifications, robust access protocols, and seamless integrations, this approach ensures your network remains secure while running at top performance.</p>
<h2>Dell Hyperconverged Infrastructure</h2> <p>Fortify and modify applications at every layer of the stack – from the supply chain to hardware infrastructure through software development and lifecycle management software.</p>	<p>Not all Hyperconverged Infrastructure solutions are equal. With Dell, you have an agile infrastructure with full stack integrity and comprehensive lifecycle management to drive operational efficiencies and reduce risks. That's why Dell has been the market leader in HCI for 20 consecutive quarters.<sup>1</sup> Now, your team can focus on your business, not chasing the latest threat.</p>
<h2>Dell Data Protection</h2> <p>Secure data across core, edge and multicloud environments with solutions that best fit your infrastructure and IT needs.</p>	<p>Simplify and automate operations at scale with industry-proven, modern, intelligent data protection. Using a full suite of integrated offerings and management tools, you can isolate critical data, identify suspicious activity and accelerate automated data recovery. With Dell data protection, you can quickly resume business as usual.</p>
<h2>Dell APEX AIOps</h2> <p>Keep infrastructure safe with cybersecurity assessments and fast remediation.</p>	<p>Be more responsive with security notifications right within the application administrators use to manage infrastructure health, capacity and performance. Monitoring and predictive analytics combine human and machine intelligence to deliver insights that ensure your IT infrastructure meets business demands.</p>
<h2>Dell Professional Services</h2> <p>Ease security operations through an automated, integrated and optimized experience.</p>	<p>Learn more about how your organization can take a more holistic approach to your cybersecurity. Fortify your environment with IT solutions for cyber resilience by protecting data and systems, enhancing cyber resiliency and overcoming security complexity and gain the confidence, control and scale you need to address security challenges with modern, end-to-end solutions from Dell Technologies.</p>

<sup>1</sup> IDC Worldwide Quarterly Converged Systems Tracker, 1Q2022

# Modern, resilient and intelligent infrastructure solutions and services.

Anything less, is unacceptable.



At Dell Technologies, we believe secure technology has never been more essential than in today's modern era.

We understand that you need to focus on business, ensuring that every chip in every server in every rack in every data center in your global IT environment is safe and secure. It is why we build security into everything we design.

For decades we've refined everything from redefining our [secure supply chains](#) to our [secure development lifecycle](#). We're diligent in how we design, source, build, ship and manage our products so you can trust them in your environment.



# Dell Trusted Infrastructure

Cyberattacks never sleep, but you can have peace of mind that your journey to IT transformation is secure.

[Learn More](#)

