



# Dell thin clients with Windows IoT Enterprise

Power, convenience, and familiarity of Windows®  
in a thin client solution optimized by Dell.

# Dell thin clients with Windows IoT Enterprise

## Built to fit your virtual workspace

Combining Dell's optimizations in management and user experience with a rich Windows ecosystem, Windows IoT Enterprise delivers immersive productivity for digital workspaces and address the needs of regulated industries such as healthcare, retail, government, financial services or education.

### Tailored to your needs

With hybrid cloud deployment and floating license allocation, manage your Dell devices from on-premises (data center), hybrid or public cloud for greater control and agility. The cloud-first, multi-tenant model supports your growing business requirements.

### User Friendly

Enjoy the familiarity of a Windows operating system requiring less user training and ensure a more productive experience with early access to updates from VDI providers and third-party solutions.

### Flexible management options

Choose from Dell's exclusive Wyse Management Suite, support from Ommissa Workspace ONE<sup>®1</sup> for a unified digital workspace platform and Microsoft Endpoint Configuration Manager<sup>1</sup> to take advantage of existing investment

### Best-in-class security

Experience enhanced protection against modern security threats, less disruption in your workday and less time managing remediation of devices with Dell added-value software securing the desktop experience.

### Rich collaboration experience

Support for VDI plugins locally enables high-quality media streams and delivers immediate benefits to the business with real-time communication and improved collaboration.

### Ready for VDI

The versatility to access all types of virtual workspaces and cloud-based environments with a built-in suite of comprehensive clients for popular VDI solutions.

### Intuitive IT interface

Deploy systems, manage embedded applications and control the write filter through an intuitive interface with Dell Application Control Center



# Upgrade to Windows 11 IoT Enterprise LTSC 2024

Windows 11 IoT Enterprise LTSC 2024 brings exciting capabilities to Dell thin client solutions and ensures a stable and secure platform, as with previous LTSC releases. These upgrade solutions provide enhanced security, compliance and efficiency from Windows® 11 IoT Enterprise, along with Dell's exclusive value-added features. Take productivity to new levels with built-in VDI broker clients, Easy Setup, Dell Imaging Manager and support for simplified management and deployment.



## Select your target thin client for Windows 11 IoT Enterprise upgrade

(upgrade option is based on the computing capabilities of your thin client device)

OptiPlex 3000 Thin Client  
OptiPlex All-in-One (Gen ID 7410)  
Latitude 3440  
with Intel celeron or pentium processors



Windows 11 IoT Enterprise  
Entry Upgrade Solution

OptiPlex All-in-One (Gen ID 7410 & 7420)  
OptiPlex Micro (Gen ID 7010 and 7020)  
Latitude 3440  
Latitude 5440  
Latitude 5450  
with Intel® Core™ i3, Intel® Core™ i5 or  
Intel® Core™ Ultra 5 processors



Windows 11 IoT Enterprise  
Value Upgrade Solution

OptiPlex Micro Gen ID 7020  
with Intel® Core™ i7 processor



Windows 11 IoT Enterprise  
High End Upgrade Solution

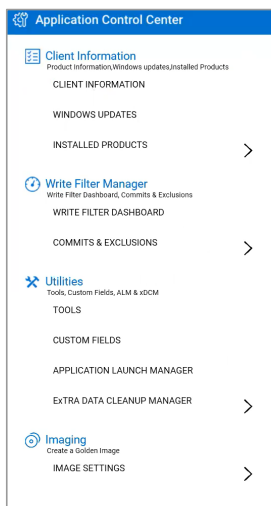
▶ [Learn more about Windows 11 IoT Enterprise LTSC 2024 upgrades](#)

# Why Windows IoT Enterprise with Dell thin clients?

Experience the benefits of our productivity applications designed to make Dell thin client solutions easier to deploy and adapt to your specific needs.

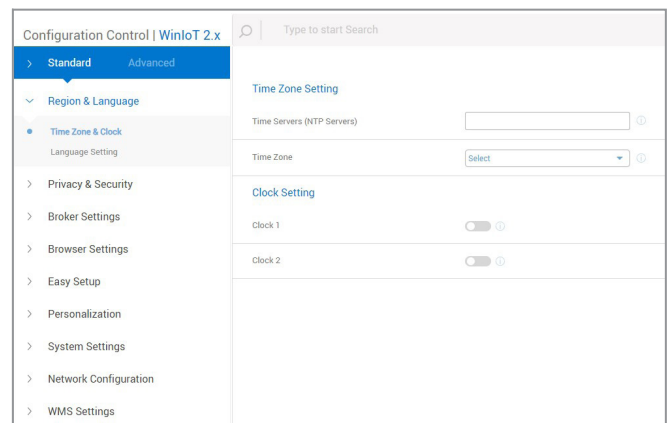
## Intuitive interface

Control system configurations, embedded applications and utility tools including write filter through an intuitive, easy to navigate interface with Dell Application Control Center.



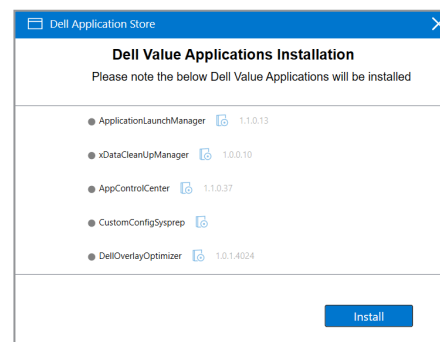
## Configuration made easier

A modern and intuitive configuration interface provides fast and easy navigation to the settings. And the new Search functionality helps IT users to quickly locate relevant configuration options and enables a streamlined and more efficient experience.\*



## All apps at your fingertips

Deploy partner components and client applications made available through quarterly releases from a convenient interface with Dell Application Store.



**40%**  
More performance  
than predecessor<sup>2</sup>

**OptiPlex 3000 Thin Client  
with Windows 10 IoT Enterprise**

\* Wyse Management Suite 4.1 with Configuration UI package is required. For complete details, refer to the technical documentation published on [www.dell.com/support](http://www.dell.com/support)

# Simplified IT Operations

Wyse Management Suite is a flexible hybrid cloud solution that allows to centrally configure, monitor, manage and optimize Dell thin client solutions, anytime, anywhere. Wyse Management Suite is ideal for businesses small, large and in-between. With multiple versions, our solution meets all levels of deployment.



Cloud-first



Web browser access



Scalability & high availability



Automation & reporting



Enterprise-class administration

## Power your workday

Manage up to one million endpoints<sup>3</sup> from the public and private cloud. Manage from anywhere with a mobile app for real-time endpoint modern management.

## Deploy with ease

From zero to productivity instantly with Wyse Management Suite Pro on public cloud<sup>3</sup>. Automated processes and intelligent insights with powerful dynamic device-grouping and rules-based automation to deliver a proactive management approach.

## Security built-in

Highly secure, Wyse Management Suite uses HTTPS-based communications, two factor authentication and roles-based provisioning.

## Efficient productivity

One tool that does it all: Easily manage your Dell endpoints, configure system and BIOS configurations, complete hardware inventories and view event and audit logs for a centralized management experience.

# Meet The Family



### OptiPlex 3000 Thin Client

The OptiPlex 3000 Thin Client delivers a quiet, durable computing experience and makes for easier multitasking with support for up to three displays at 4K resolution. Intel® Quad Core processors bring instant and seamless access to digital and virtual workspaces. An all-new variety of mounts offers flexibility in setting up a work environment.

[▶ view 360° product demo](#)



### Dell Pro 24 All-in-One 35W QC24251

A 24" all-in one desktop with smart collaboration features, up to the latest Intel® Core™ i5 and ergonomic stand options. Crystal-clear images and video come through on 24" Full HD Touch and Non-Touch panels. With the TUV Low Blue Light certified non-touch panel, you can work comfortably with reduced eye strain.

[▶ view 360° product demo: 35 Watts](#)



### Dell Pro 14 Laptop

Modern design with up-leveled essential productivity features for every business. A full HD 14" display, built-in support for unified communications and rich connectivity options deliver a productive user experience and faster and smarter collaboration.

[▶ view 360° product demo](#)



| FEATURE   | TECHNICAL SPECIFICATIONS5  | TECHNICAL SPECIFICATIONS5   |
|---|--|---|
| <b>OPERATING SYSTEM</b>                                 | Windows 10 IoT Enterprise LTSC 2021 (quarterly release 2502)   | Windows 11 IoT Enterprise LTSC 2024   |
| <b>DELL CLIENT DEVICE OPTIONS<sup>1</sup></b>           | OptiPlex 3000 Thin Client<br>OptiPlex All-in-One<br>OptiPlex Micro Form Factor 7020 (Plus version)<br>Latitude 3440<br>Latitude 5450   | OptiPlex 3000 Thin Client<br>Dell Pro 24 All-in-One 35W QC24251<br>Dell Pro 14 Laptop PC14250   |
| <b>ELIGIBLE DEVICES FOR UPGRADE OPTION <sup>1</sup></b> |  | OptiPlex 3000 Thin Client<br>OptiPlex All-in-One 7410, 7420<br>OptiPlex Micro Form Factor (Plus version) 7010, 7020<br>Latitude 3440<br>Latitude 5440<br>Latitude 5450  |
| <b>SERVER OS INFRASTRUCTURE SUPPORT</b>                 | VMware Horizon®<br>Microsoft® Azure<br>Microsoft® Azure Virtual Desktops<br>Microsoft® Windows Terminal Server<br>Citrix Workspace™<br>Citrix Virtual Apps and Desktops™ (formerly XenDesktop/XenApp)<br>Amazon WorkSpaces   | VMware Horizon®<br>Microsoft® Azure<br>Microsoft® Azure Virtual Desktops<br>Microsoft® Windows Terminal Server<br>Citrix Workspace™<br>Citrix Virtual Apps and Desktops™ (formerly XenDesktop/XenApp)<br>Amazon WorkSpaces  |
| <b>BROKER CLIENT<sup>2</sup></b>                        | VMware Horizon client 2406 or latest<br>Citrix Workspace app 2409 CR or latest<br>Microsoft RDP 10 client<br>Microsoft Azure Virtual Desktop client 1.2.x or latest<br>Amazon WorkSpaces Windows client 5.17.x   | VMware Horizon client 2406 or latest<br>Citrix Workspace app 2409 CR or latest<br>Microsoft Remote Desktop Connection (RDP) 10 client<br>Microsoft Azure Virtual Desktop client 1.2.x or latest<br>Amazon WorkSpaces Windows client 5.24.x "add-on"   |
| <b>LOCAL BROWSER</b>                                    | Microsoft Edge Browser<br>Microsoft Internet Explorer 11   | Microsoft Edge Browser  |
| <b>DELL PRODUCTIVITY APPLICATIONS<sup>4</sup></b>       | <p><b>Dell Application Store</b> allows to selectively deploy Dell value-added applications to one device or a group of devices using Wyse Management Suite or Microsoft Endpoint Configuration Manager</p> <p><b>Overlay Optimizer</b> provides write protection to deliver better performance and session reliability</p> <p><b>Dell Application Control Center</b> provides enhanced control over system configurations, embedded applications and utility tools through an intuitive, easy to navigate interface.</p> <p><b>Easy Setup</b> helps to quickly and simply deploy configurations</p> <p><b>Application Launch Manager (ALM)</b> enables to start an application that is based on predefined events such as service startup, user login/logoff, or system shutdown in system account.</p> <p><b>xData Cleanup Manager</b> helps to optimizes client disk space</p> <p><b>Wyse Device Agent</b></p> <p><b>Dell Command Monitor</b></p> | <p><b>Dell Application Store</b> allows to selectively deploy Dell value-added applications to one device or a group of devices using Wyse Management Suite or Microsoft Endpoint Configuration Manager</p> <p><b>Dell Application Control Center</b> provides enhanced control over system configurations, embedded applications and utility tools through an intuitive, easy to navigate interface.</p> <p><b>Easy Setup</b> helps to quickly and simply deploy configurations</p> <p><b>Application Launch Manager (ALM)</b> enables to start an application that is based on predefined events such as service startup, user login/logoff, or system shutdown in system account.</p> <p><b>xData Cleanup Manager</b> helps to optimizes client disk space</p> <p><b>Dell Imaging Manager</b> provides a modern and intuitive UI to capture and deploy images efficiently.</p> <p><b>Wyse Device Agent</b></p> <p><b>Dell Command Monitor</b></p> <p><b>Dell Imaging Manager</b></p> |
| <b>UNIFIED COMMUNICATIONS OPTIMIZATION</b>              | Microsoft Teams VDI Optimization (for Citrix and VMware)<br>Zoom Cloud Meetings VDI Optimization 5.16.x or latest (for Citrix and VMware)<br>Cisco Webex App VDI Plugin 43.12.x or latest (package includes VDI Meetings and VDI plugin)<br>Cisco Jabber 14.3.x or latest  | Microsoft Teams VDI Optimization (with Citrix and VMware)<br>Zoom Cloud Meetings VDI Optimization 5.16.x or latest (with Citrix and VMware)<br>Cisco Webex App VDI Plugin 44.8.x or latest (package includes VDI Meetings and VDI plugin)<br>Cisco Jabber 15.x or latest  |
| <b>SECURITY</b>   | TPM Hardware encryption <sup>8</sup> (factory configuration)<br>UEFI supported<br>BitLocker Drive Encryption<br>Unified Write Filter supported<br>VMware Carbon Black (optional) <sup>1</sup>  | TPM Hardware encryption <sup>8</sup> (factory configuration)<br>UEFI supported<br>BitLocker Drive Encryption<br>Unified Write Filter supported<br>VMware Carbon Black (optional) <sup>1</sup>   |
| <b>WINDOWS APPLICATIONS</b>                             | <ul style="list-style-type: none"> <li>Windows Media Player</li> <li>Windows Multitouch and gestures support</li> <li>Microsoft .NET</li> <li>Keyboard Filter</li> <li>Windows Defender Advanced Threat Protection</li> <li>H.265 codec with HEVC</li> </ul>   | <ul style="list-style-type: none"> <li>Windows Media Player</li> <li>Windows Multitouch and gestures support</li> <li>Microsoft .NET</li> <li>Keyboard Filter</li> <li>Windows Security - Windows Defender Advanced Threat Protection</li> <li>H.265 codec with HEVC</li> </ul>   |

| FEATURE                                | TECHNICAL SPECIFICATIONS <sup>5</sup>   | TECHNICAL SPECIFICATIONS <sup>5</sup>  |
|--|---|--|
| <b>MANAGEMENT OPTIONS</b>              | Wyse Management Suite 5.0 (or above) Pro edition recommended for comprehensive management and hybrid cloud deployment - <a href="#">Free trial</a><br>Wyse Management Suite 5.0 (or above) Standard edition available for basic on-premises management - <a href="#">Request 1-year free license</a><br>Management through VMware Workspace ONE <sup>®</sup> (optional) <sup>2</sup><br>Support for Microsoft Endpoint Configuration Manager 2303<br>Dell Command   Monitor 10.6.x<br>Remote shadowing and control with Tight VNC | Wyse Management Suite 5.0 (or above) Pro edition recommended for comprehensive management and hybrid cloud deployment - <a href="#">Free trial</a><br>Wyse Management Suite 5.0 (or above) Standard edition available for basic on-premises management - <a href="#">Request 1-year free license</a><br>Management through VMware Workspace ONE <sup>®</sup> (optional) <sup>2</sup><br>Support for Microsoft Endpoint Configuration Manager 2303<br>Dell Command   Monitor 10.10.x<br>Remote shadowing and control with Tight VNC |
| <b>USER INTERFACE LANGUAGE SUPPORT</b> | English, Brazilian Portuguese, Spanish, French Canada, German, Italian, French, Russian, Simplified Chinese, Traditional Chinese, Japanese, Korean, Danish , Finnish, Swedish, Norwegian, Dutch   |  |
| <b>DOWNLOADS AND DOCUMENTATION</b>     | Quarterly releases and technical documentation are available on <a href="http://Dell.com/Support">Dell.com/Support</a> for the supported Dell thin clients.   |  |



# Your thin client solution in 3 easy steps

Meet the evolving needs of the workforce and increase efficiency without compromising on security with Cloud Client Workspace software and Dell thin client solutions. Pair our thin client software options with industry-leading Dell Pro systems for a personalized VDI endpoint solution delivering smarter user experiences and stronger security.

## 1 Select the Thin Client Software

### Dell ThinOS<sup>1</sup>

The most secure thin client OS\* is purpose-built for VDI to deliver a simplified end-user and IT experience.

[Learn More >](#)

### Windows 11 IoT Enterprise LTSC<sup>1</sup>

Power and familiarity of Windows® in a thin client optimized by Dell with robust security features and flexible management options.

[Learn More >](#)

## 2 Choose a Form Factor

Laptop, All-in-One and desktop form factor options give you the freedom to create a personalized virtual workspace. Work in confidence anywhere and enable a more productive and collaborative VDI experience with our new premium devices<sup>2</sup>.



**OptiPlex 3000 Thin Client**

The OptiPlex 3000 Thin Client delivers a quiet, durable computing experience and makes it easier to multi-task.



**Dell Pro 24 All-in-One (QC24251) [35W]**

Sleek, space-saving All-in-One thin client solution that combines performance with collaboration features.



**Dell Pro 14 (PC14250)**

Work confidently with this reliable laptop equipped with essential performance features.



**Dell Pro 16 Plus<sup>3</sup> (PB16250)**

Boost productivity with a large 16" display and a numeric keypad for data entry accuracy.

## 3 Add Wyse Management Suite Pro

An enterprise-class solution that provides modern and secure management of all your Dell thin client solutions from anywhere. Securely manage a distributed workforce with a hybrid cloud solution designed to meet all deployment levels.

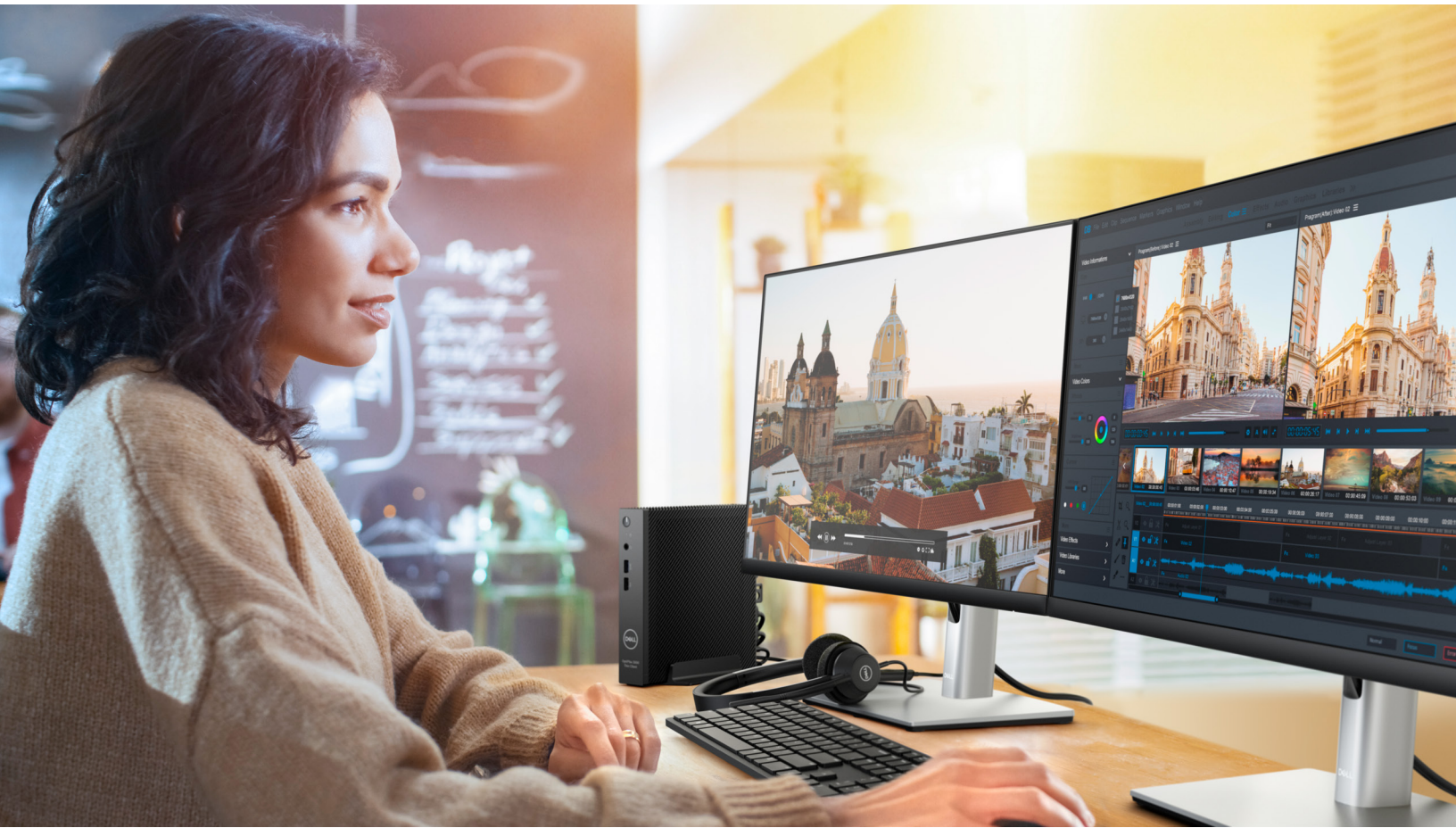
[Click here to learn more about Cloud Client Workspace](#)

\* Based on Dell analysis of Dell ThinOS in Appliance Mode vs. competitive products, January 2025. CLM-006980

1. Offering may vary by country and by configuration and operating system. Some items may be available after product introduction.

2. Product images are not to scale. Refer to specifications for accurate measurements

3. ThinOS 10 is a customer install option available for select configuration options and capabilities of the Dell Pro 16 Plus. ThinOS 10 can be manually installed from a USB key or deployed to units shipped with factory-installed Ubuntu 24.04 for Managed Clients. The required ThinOS 10 subscription license is sold separately.



### Secure by design

Work confidently from anywhere with solutions designed to augment the security of your VDI and cloud environments.

### Unified approach to I.T.

Modern management with hybrid cloud deployment provides greater control and agility.

### Optimized user experience

Access digital and virtual workspaces with unprecedented simplicity and flexibility.

Learn more at [Dell.com/CloudClientWorkspace](https://www.dell.com/CloudClientWorkspace)

1. Sold separately, available from respective vendors
2. Based on Dell internal analysis using CPU Mark benchmark tests, comparing the OptiPlex 3000 Thin Client configured Windows 10 IoT Enterprise with the Wyse 5070 Thin Client similarly configured, March 2022. Actual results may vary.
3. Requires Wyse Management Suite Pro on public cloud. License activation required
4. Wireless antenna and module available only at time of system purchase.
5. Offering may vary by country and by configuration and operating system. Some items may be available after product introduction. For complete details, refer to the Setup and Specifications published on [www.dell.com/support](https://www.dell.com/support). Windows 11 IoT Enterprise is not available to configure with the Dell Pro 16 Plus. Dell ThinOS 10 is a customer install option available for select configuration options and capabilities of the Dell Pro 16 Plus. ThinOS 10 can be manually installed from a USB key or deployed to units shipped with factory installed
6. Ubuntu 24.04 for Managed Clients. The required ThinOS 10 subscription license is sold separately and Wyse Management Suite Pro Edition version 5.0.
7. Visit [dell.com/support](https://www.dell.com/support) for a comprehensive list of all available downloads and latest release. For complete details, refer to the Windows 10 Enterprise for Dell Thin Clients Administrator's Guides published on [www.dell.com/support](https://www.dell.com/support).
8. Support and features depending on customer environment and by region, partner broker, VDI protocol and configurations.
9. TPM is available in selected regions and select models.