



# All-day productivity

Dell Pro 24 Plus Monitor

**MODEL: P2425H**

Dell Pro 24 Plus Monitor

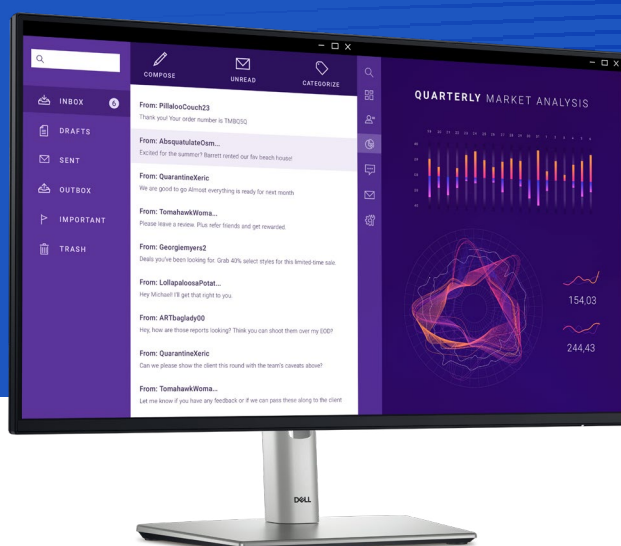
**MODEL: P2425H without stand<sup>1</sup>**

The world's # 1 monitor company\*

\* Dell monitors are #1 Worldwide for 10 years! Source: IDC Worldwide Quarterly PC Monitor Tracker, Q3 2024. From 2014 to 2024.

1 Product availability may vary by country, please contact your Dell representative for more information.

# 4-star certified monitor for eye comfort<sup>1</sup>



Get enhanced visual comfort and seamless connectivity with this 23.8-in FHD monitor.

## Enhanced eye comfort

This monitor achieves TÜV Rheinland® 4-star eye comfort certification — the latest industry standard for eye comfort to help reduce signs of eye fatigue.

Benefit from improved ComfortView Plus, a built-in feature that reduces blue light emission to less than 35% while allowing you to see vibrant colors with 99% sRGB coverage, and 100Hz refresh rate that delivers smoother and sharper motion visuals.

## Easy to connect

Connect your accessories across a variety of ports including DisplayPort 1.2, VGA, HDMI and a Quick Access USB-C port that delivers up to 15W of power.

## See your work clearly

With In-Plane Switching (IPS) technology, this monitor offers a wide 178°/178° viewing angle, so you can view your work with consistent color and image quality from virtually any angle.

Get deeper blacks and brighter whites with 1500:1 contrast ratio.

<sup>1</sup> Based off TÜV Rheinland® eye comfort certification.



### Enhanced eye comfort

Stay productive while ensuring eye comfort. The 100Hz refresh rate delivers smooth motion visuals, and improved ComfortView Plus reduces harmful low blue light emissions while allowing you to see vibrant colors with 99% sRGB coverage.



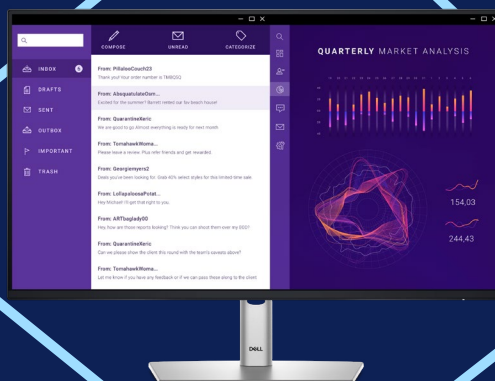
### A better view from anywhere

See consistent images across wide viewing angles enabled by In-Plane Switching (IPS) technology and detailed images with 1500:1 contrast ratio on this FHD monitor.



### Multi-task with ease

Boost efficiency with Dell Display and Peripheral Manager that lets you organize multiple apps on your screen.



### Easy to connect

Connect your accessories via a wide variety of ports including a Quick Access USB-C downstream port that delivers up to 15W of power.

▶ [Click here to explore more.](#)

### World's number 1 monitor company\*

We deliver world-class monitors that have gone through rigorous development processes and stringent tests to ensure dependable performance. Get peace of mind with unmatched warranty and support options. Being environmentally forward in thinking, our monitors adhere to environment standards and are made with sustainable materials.



# Environmentally-forward thinking

## Sustainable materials

Thoughtfully crafted with sustainable materials including 85% recycled plastics<sup>1</sup> with post-consumer recycled plastic and closed-loop ITE-derived plastic, 50% recycled steel<sup>2</sup>, 100% recycled aluminum<sup>2</sup> and at least 20% recycled glass.<sup>3</sup>

## Packaging innovation

Ships with reduced plastic<sup>4</sup> and is in a box made with 100% renewable materials that is recyclable.<sup>5</sup> Dell is shifting to a cushioning solution derived entirely from fiber that is kinder to the environment.

## Elevated standards

Dell Technologies has the industry's widest portfolio of Display product types that have achieved the EPEAT Climate+ designation.<sup>6</sup> This monitor meets highest environmental standards and registered EPEAT Gold with Climate+ designation — industry best practices for decarbonization.<sup>7</sup>

## Energy conservation

Using PowerNap mode in Dell Display and Peripheral Manager lowers energy use by up to 14.8%.<sup>8</sup>

<sup>1</sup> Percentage is based on system plastic weight and may vary by model. 60% post-consumer recycled plastic, 25% closed loop ITE-derived plastic. ITE derived post-consumer recycled plastic: Materials that are derived from discarded products listed under IT and Telecommunications Equipment category in Annex II, Part 3 of EU Directive 2012/19/EU (the WEEE Directive)<sup>40</sup> and televisions. Based on internal analysis, January 2024.

<sup>2</sup> 100% recycled aluminum: Monitor stand. 50% recycled steel: Monitor chassis. Based on internal analysis, January 2024.

<sup>3</sup> Applicable to all new monitors launching in CY 2024. Recycled glass is present in monitor panel. Based on internal analysis, January 2024.

<sup>4</sup> Based on internal analysis, January 2024. Applies to all new P series and S series monitors launching in Cy2024. 22% average reduction in plastic use is based on the removal of EPE foam.

<sup>5</sup> Applies to all Dell monitors launched since 2023. Made from FSC mix sources which is a mix of material from FSC certified forests, recycled content and/or FSC controlled wood. Based on internal analysis, August 2023.

<sup>6</sup> Based on EPEAT Climate+ Designations achieved in all applicable countries. EPEAT registered where applicable. EPEAT registration varies by country. See [www.epeat.net](http://www.epeat.net) for registration status and tier levels by country. Data as available in October 2023.

<sup>7</sup> Based on internal analysis, November 2023. Based on EPEAT Climate+ Designations achieved in all applicable countries. EPEAT registered where applicable. EPEAT registration varies by country. See [www.epeat.net](http://www.epeat.net) for registration status and tier levels by country.

<sup>8</sup> The calculation assumes the monitor is used for 10 hours a day, including 1.5 hours of idle time with display in sleep mode when the device screensaver is on. Based on internal analysis, May 2023.





# All day comfort

Get a seamless viewing experience and focus on your task with ultra-thin bezel design.



## Easy-to-use

Navigate the onscreen menu and adjust settings with a convenient joystick control.



## De-clutter your workspace

Free up your desk space with the small monitor base and hide cables from view by tucking them into the riser.<sup>1</sup>

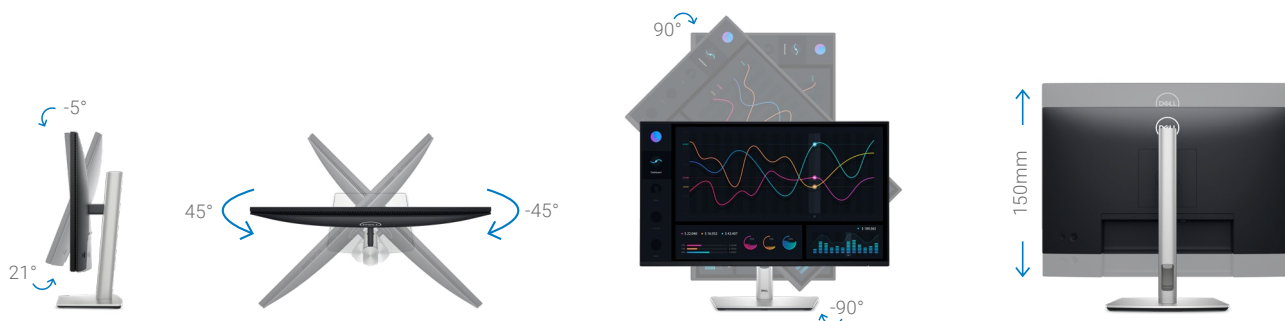


## Quick access

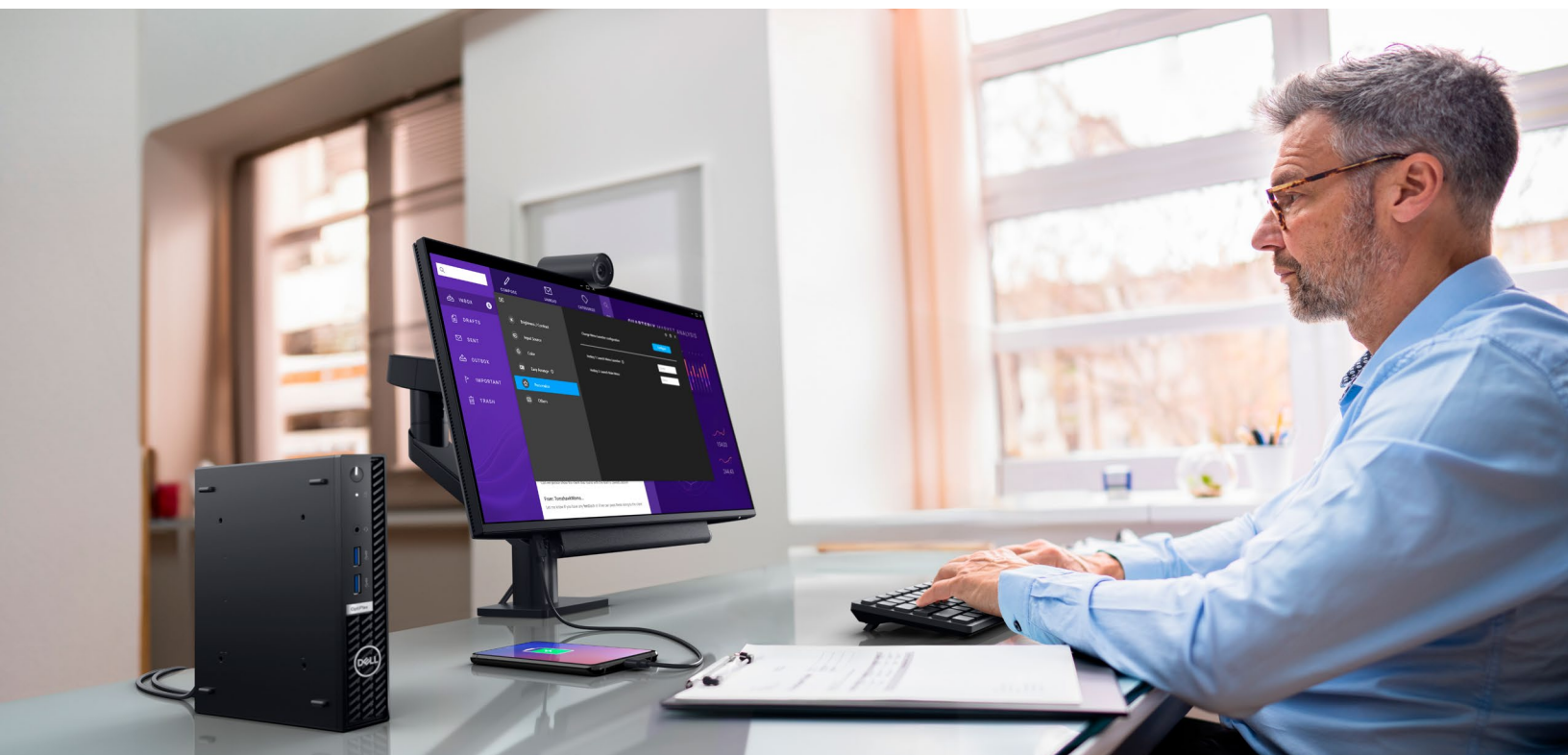
USB-C downstream port enables fast data transfers and charging of up to 15W of power.

## Work comfortably

Experience made-for-you comfort by tilting<sup>1</sup>, swiveling<sup>1</sup>, pivoting<sup>1</sup> and adjusting the height<sup>1</sup> of your monitor (150mm max).



<sup>1</sup> Not applicable to Dell Pro 24 Plus Monitor without stand.



# Dell Display and Peripheral Manager

Experience Dell's singular, innovative application to optimize the performance of your entire Dell PC workspace.<sup>1</sup>

## Maximize productivity

Easy Arrange tiles apps across screens with pre-set partitions, enhancing multitasking. Easy Arrange Memory saves and restores app profiles manually, on schedule, or at start-up.

## Customize your views

Work comfortably, day or night. Automate your brightness and contrast settings to match your schedule.

## More manageable

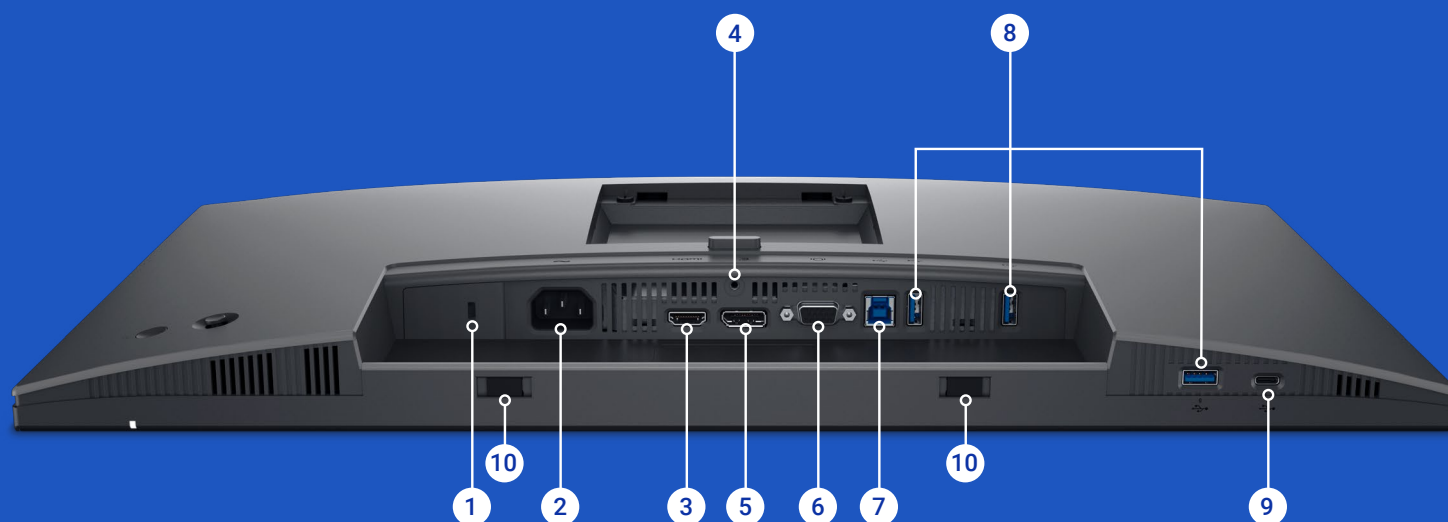
Scale up management across your entire fleet of Dell displays and client peripherals with streamlined firmware updates and expanded Command Line Interface features.<sup>2</sup>

[Download Dell Display and Peripheral Manager](#)

<sup>1</sup> Based on Dell internal analysis – February 2025.

<sup>2</sup> Firmware updates for fleet deployment are available for Dell Pro Plus Hub Monitors

# Ports & Slots



- 1** Security lock slot<sup>1</sup>
- 2** Power connector
- 3** HDMI
- 4** Stand-lock
- 5** DisplayPort 1.2
- 6** VGA

- 7** USB 3.2 Gen1 Type-B upstream
- 8** USB 3.2 Gen1 Type-A downstream (3)
- 9** USB 3.2 Gen1 Type-C downstream (PD of up to 15W)
- 10** Soundbar slots

<sup>1</sup> Based on Kensington Security Slot™

FEATURE	TECHNICAL SPECIFICATION
MODEL	Dell Pro 24 Plus Monitor - P2425H
DIAGONAL VIEWING SIZE	60.47 cm (23.8")
PRESET DISPLAY AREA (H X V)	527.04 mm x 296.46 mm (20.75" x 11.67")
PANEL TYPE	In-Plane Switching (IPS) technology
DISPLAY SCREEN COATING	Anti-glare with 3H hardness
MAXIMUM PRESET RESOLUTION	1920 x 1080
REFRESH RATE	Up to 100 Hz
VIEWING ANGLE	178° vertical / 178° horizontal
PIXEL PITCH	0.2745 mm x 0.2745 mm
PIXEL PER INCH (PPI)	92.53
CONTRAST RATIO	1,500: 1 (typical)
ASPECT RATIO	16:9
BACKLIGHT TECHNOLOGY	LED edgelight system
BRIGHTNESS	250 cd/m <sup>2</sup> (typical)
RESPONSE TIME	5ms gray-to-gray (Fast mode) 8ms gray-to-gray (Normal mode)
COLOR SUPPORT	Color Gamut: 99% sRGB Color Depth: Up to 16.7 million colors
TÜV EYE COMFORT	Yes, 4-Star
FLICKER FREE	Yes
CONNECTIVITY	<ul style="list-style-type: none"> <li>1 x HDMI 1.4 (HDCP 1.4) (Supports up to FHD 1920 x 1080 100Hz TMDS as per specified in HDMI 1.4)</li> <li>1 x DP 1.2 (HDCP 1.4)</li> <li>1 x VGA</li> <li>1 x USB 3.2 Gen1 Type-B upstream</li> <li>3 x USB 3.2 Gen1 Type-A downstream</li> <li>1 x USB 3.2 Gen1 Type-C downstream with up to 15W PD (data only)</li> </ul>
USB POWER DELIVERY	Yes, up to 15W via USB-C downstream port
ADJUSTABILITY	Height: Up to 150 mm (5.9") Tilt: -5° ~ 21° Swivel: -45° ~ 45° Pivot: -90° ~ 90°
DELL DISPLAY AND PERIPHERAL MANAGER COMPATIBILITY	Yes with Easy Arrange
REMOTE ASSET MANAGEMENT	Yes
SPECIFICATIONS - SERVICE / SUPPORT DETAILS	3 Year Limited Hardware Warranty with Advanced Exchange Service and Premium Panel Exchange

FEATURE	TECHNICAL SPECIFICATION
VOLTAGE REQUIRED	100 VAC to 240 VAC / 50 Hz or 60 Hz ± 3 Hz / 1.5 A (typ)
POWER CONSUMPTION (OPERATIONAL) (TYPICAL)	0.3 W (Off mode) 0.3 W (Standby mode) 11.7 W (On mode) 65 W (Max) 12.0 W (Pon) 38.4 kWh (TEC)
AUDIO OUTPUT	Optional soundbar (sold separately)
HEIGHT WITH STAND (COMPRESSED ~ EXTENDED)	364.00 mm ~ 496.53 mm (14.33" ~ 19.55")
WIDTH WITH STAND	538.64 mm (21.21")
DEPTH WITH STAND	181.75 mm (7.16")
HEIGHT WITHOUT STAND	314.23 mm (12.37")
WIDTH WITHOUT STAND	538.64 mm (21.21")
DEPTH WITHOUT STAND	50.03 mm (1.97")
WEIGHT (PANEL ONLY - FOR VESA MOUNT)	3.12 kg (6.88 lbs)
WEIGHT (WITH PACKAGING)	6.78 kg (14.95 lbs)
SECURITY	Security-lock slot (based on Kensington Security Slot™)
COMPLIANT STANDARDS	<ul style="list-style-type: none"> <li>ENERGY STAR® certified monitor</li> <li>EPEAT® GOLD</li> <li>EPEAT® Climate+</li> <li>TCO Certified Displays</li> <li>TCO Certified Edge</li> <li>RoHS-compliant</li> <li>BFR / PVC free monitor (excluding external cables)</li> <li>Arsenic-free glass and mercury-free (panel only)</li> </ul>
FLAT PANEL MOUNT INTERFACE	VESA (100 mm x 100mm)
TEMPERATURE RANGE	Operating: 0°C ~ 40°C (32°F ~ 104°F) Non-operating: -20° ~ 60°C (-4° ~ 140°F)
HUMIDITY RANGE	Operating: 10% ~ 80% (non-condensing) Non-operating: 5% ~ 90% (non-condensing)
ALTITUDE	Operating: 5,000 m (16,404 ft) max Non-operating: 12,192 m (40,000 ft) max
WHAT'S INCLUDED	1 x Monitor panel 1 x Stand riser and base 1 x Power cord 1 x DP-to-DP cable, 1.8m 1 x USB 3.2 Gen1 Type A-to-B (upstream) cable, 1.8m 1 x Quick setup guide 1 x Safety, Environmental, and Regulatory Information



FEATURE	TECHNICAL SPECIFICATION
MODEL	Dell Pro 24 Plus Monitor - P2425H without stand <sup>1</sup>
DIAGONAL VIEWING SIZE	60.47 cm (23.8")
PRESET DISPLAY AREA (H X V)	527.04 mm x 296.46 mm (20.75" x 11.67")
PANEL TYPE	In-Plane Switching (IPS) technology
DISPLAY SCREEN COATING	Anti-glare with 3H hardness
MAXIMUM PRESET RESOLUTION	1920 x 1080
REFRESH RATE	Up to 100 Hz
VIEWING ANGLE	178° vertical / 178° horizontal
PIXEL PITCH	0.2745 mm x 0.2745 mm
PIXEL PER INCH (PPI)	92.53
CONTRAST RATIO	1,500: 1 (typical)
ASPECT RATIO	16:9
BACKLIGHT TECHNOLOGY	LED edgelight system
BRIGHTNESS	250 cd/m <sup>2</sup> (typical)
RESPONSE TIME	5ms gray-to-gray (Fast mode) 8ms gray-to-gray (Normal mode)
COLOR SUPPORT	Color Gamut: 99% sRGB Color Depth: Up to 16.7 million colors
TÜV EYE COMFORT	Yes, 4-Star
FLICKER FREE	Yes
CONNECTIVITY	<ul style="list-style-type: none"> <li>1 x HDMI 1.4 (HDCP 1.4) (Supports up to FHD 1920 x 1080 100Hz TMDS as per specified in HDMI 1.4)</li> <li>1 x DP 1.2 (HDCP 1.4)</li> <li>1 x VGA</li> <li>1 x USB 3.2 Gen1 Type-B upstream</li> <li>3 x USB 3.2 Gen1 Type-A downstream</li> <li>1 x USB 3.2 Gen1 Type-C downstream with up to 15W PD (data only)</li> </ul>
USB POWER DELIVERY	Yes, up to 15W via USB-C downstream port
DELL DISPLAY AND PERIPHERAL MANAGER COMPATIBILITY	Yes with Easy Arrange
REMOTE ASSET MANAGEMENT	Yes
SPECIFICATIONS - SERVICE / SUPPORT DETAILS	3 Year Limited Hardware Warranty with Advanced Exchange Service and Premium Panel Exchange

FEATURE	TECHNICAL SPECIFICATION
VOLTAGE REQUIRED	100 VAC to 240 VAC / 50 Hz or 60 Hz ± 3 Hz / 1.5 A (typ)
POWER CONSUMPTION (OPERATIONAL) (TYPICAL)	0.3 W (Off mode) 0.3 W (Standby mode) 11.7 W (On mode) 65 W (Max) 12.0 W (Pon) 38.4 kWh (TEC)
AUDIO OUTPUT	Optional soundbar (sold separately)
HEIGHT WITHOUT STAND	314.23 mm (12.37")
WIDTH WITHOUT STAND	538.64 mm (21.21")
DEPTH WITHOUT STAND	50.03 mm (1.97")
WEIGHT (PANEL ONLY - FOR VESA MOUNT)	3.12 kg (6.88 lbs)
WEIGHT (WITH PACKAGING)	5.34 kg (11.77 lbs)
SECURITY	Security-lock slot (based on Kensington Security Slot™)
COMPLIANT STANDARDS	<ul style="list-style-type: none"> <li>ENERGY STAR® certified monitor</li> <li>EPEAT® GOLD</li> <li>EPEAT® Climate+</li> <li>TCO Certified Displays</li> <li>TCO Certified Edge</li> <li>RoHS-compliant</li> <li>BFR / PVC free monitor (excluding external cables)</li> <li>Arsenic-free glass and mercury-free (panel only)</li> </ul>
FLAT PANEL MOUNT INTERFACE	VESA (100 mm x 100mm)
TEMPERATURE RANGE	Operating: 0°C ~ 40°C (32°F ~ 104°F) Non-operating: -20° ~ 60°C (-4° ~ 140°F)
HUMIDITY RANGE	Operating: 10% ~ 80% (non-condensing) Non-operating: 5% ~ 90% (non-condensing)
ALTITUDE	Operating: 5,000 m (16,404 ft) max Non-operating: 12,192 m (40,000 ft) max
WHAT'S INCLUDED	1 x Monitor panel 1 x Power cord 1 x DP-to-DP cable, 1.8m 1 x USB 3.2 Gen1 Type A-to-B (upstream) cable, 1.8m 1 x Quick setup guide 1 x Safety, Environmental, and Regulatory Information

# Steadfast reliability

As the No. 1 monitor company worldwide\*, we take pride in our unyielding commitment to quality and the utmost in customer satisfaction.

## Premium Panel Exchange

Dell Premium Panel Exchange<sup>1</sup> allows a free monitor replacement during the Limited Hardware Warranty<sup>2</sup> period even if only one bright pixel is found.

## Advanced Exchange Service

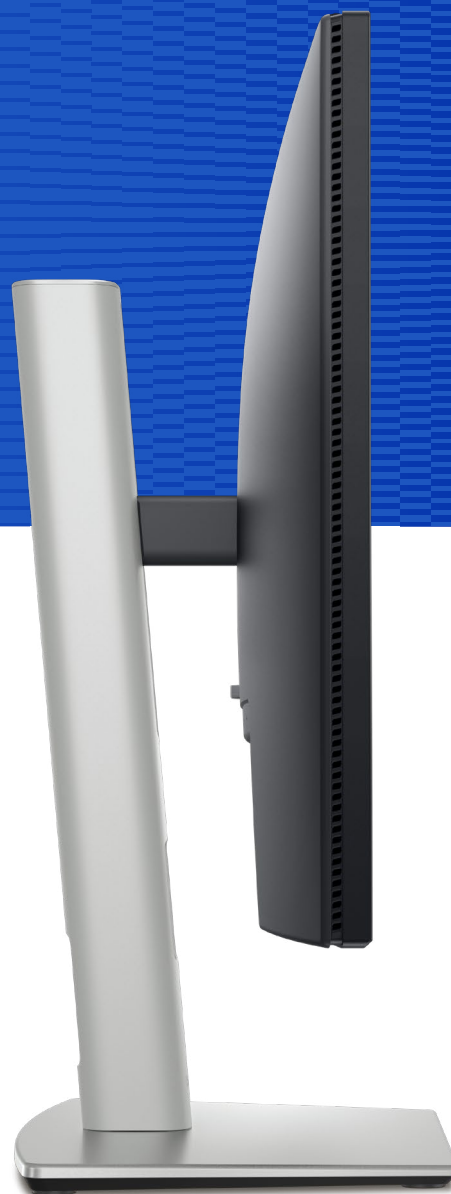
This monitor comes with a 3-year Advanced Exchange Service<sup>3</sup> so that if a replacement becomes necessary, it will be shipped to you the next business day during your 3-year Limited Hardware Warranty.<sup>2</sup>

## ProSupport

Upgrade to 24x7 specialized technical phone support with the Dell ProSupport option.<sup>4</sup>

## Optimal integration

Dell Monitor is designed to work seamlessly with our PC and accessories. Visit the support page to find out more.



\* Dell monitors are #1 Worldwide for 10 years! Source: IDC Worldwide Quarterly PC Monitor Tracker, Q3 2024. From 2014 to 2024.

1 Applicable to Dell UltraSharp, P Series, and C Series desktop monitors.

2 For copy of Ltd Hardware Warranty, write to Dell USA LP, Attn: Warranties, One Dell Way, Round Rock, TX 78682 or see <https://www.dell.com/warranty>.

3 Advanced Exchange: Dell will send you a replacement monitor the next business day in most cases, if deemed necessary after phone/online diagnosis. Shipping times may vary by location and for monitors 55" and above. Fee charged for failure to return defective unit. See [dell.com/servicecontracts/global](https://www.dell.com/servicecontracts/global).

4 Availability varies, please visit [www.dell.com/support](https://www.dell.com/support) for details. In some countries, hours for in-region support may vary. Support after local business hours may be provided in a language other than the local language.

Technical specifications subject to change without prior notice. Product availability varies by country. Please contact your Dell representative for more information.

© 2025 Dell Inc. or its subsidiaries. All Rights Reserved. Dell Technologies, Dell, EMC, Dell EMC and other trademarks are trademarks of Dell Inc. or its subsidiaries. Other trademarks may be trademarks of their respective owners. USB Type-C® and USB-C® are registered trademarks of USB Implementers Forum. Thunderbolt and the Thunderbolt logo are trademarks of Intel Corporation in the U.S. and/or other countries.