



Dell Pro 24 All-in-One 35W thin client solution

QC24251

Built for seamless collaboration and optimized for Dell cloud client solutions

Thin client solution built for seamless collaboration

Work in comfort and in style. This space-saving All-in-One with built-in camera, mics and speakers can optimize productivity and collaboration for a variety of workstyles. Whether you are in hospitality, retail, healthcare or another sector, experience confident and seamless access to virtual desktops and Desktop-as-a-Service environments.

Responsive, business-class performance

Engineered to increase your productivity with Intel® Core™ up to i5 processors when configured with Dell ThinOS or Windows 11 IoT Enterprise.

Next-level video conferencing

Connect like you're there with an FHD HDR (High Dynamic Range) webcam that automatically adjusts so users look clear in any lighting environment.

Work comfortably

Choose the right set-up for your needs with 24" FHD touch or non-touch TÜV Rheinland certified low blue light displays^{2,3}, with the choice of fixed or height-adjustable stands.

Secure access to digital and virtual workspaces

Versatile thin client operating system options and centralized control from Wyse Management Suite. Configure your Dell Pro 24 All-in-One with Dell ThinOS or Windows 11 IoT Enterprise to power your VDI environment with a smarter user experience, stronger security and easier IT management.

Most secure thin client solution with Dell ThinOS¹

No sensitive data or personal information exposed on the local device. With a closed architecture, system hardening to limit attack surfaces, unpublished APIs, and encrypted data and files exclusively packaged by Dell, ThinOS is virus and malware-resistant.

High-speed productivity

Up to 512GB M.2 Gen 4 SSD and up to 32GB DDR5 RAM with up to 5600 MT/s speeds.

Comprehensive connectivity including USB-C, USB-A, DP and HDMI ports. DP ports support up to 5K resolution for stunning visual quality.

Fuel productivity with a complete Dell ecosystem

Designed and tested with Dell Accessories, Mounts and Stands, and Monitors from the world's #1 monitor company⁴.

Intentional material choices

- Built with up to 54% recycled plastic⁹
- Up to 100% recycled or renewable packaging¹⁰

Meets the latest environmental standards

Certified ENERGY STAR®, carries TCO certification and EPEAT Gold registered with Climate+ designation⁸.

APEX and services

Experience the world's first and most comprehensive as-a-service portfolio with Dell APEX⁷.

Simplify IT

Streamline PC fleet management with one unified BIOS across Dell Pro All-in-One PCs⁵.

Two year PC refresh lifecycle for managed transitions help reduce maintenance and support costs.

Trusted reliability

Dell Pro desktops are built for reliability and durability, with less than 1% requiring service in their first year⁶.



Sustainable innovation



Sustainable materials

Built with up to 54% recycled plastic including closed-loop ITE derived plastic¹. Plus, there is 16% recycled glass in the panel¹.



Built to last

Built with high-quality components, Dell Pro desktops drive top performance and value throughout its lifecycle. Dell makes it simple to access and replace parts to get the most life out of our products.

[Parts & upgrades >](#)



Meets the latest environmental standards

These products are certified TCO, ENERGY STAR® and EPEAT Gold registered with Climate+³.



Packaging

These products ship in packaging made with up to 100% recycled or renewable content².



Seamlessly modernize your tech

We can help you refresh to the latest technology while responsibly retiring your devices, regardless of brand, while addressing your sustainability goals.

[Asset recovery services >](#)



Elevate your thin client experience

Fuel productivity and collaboration with a complete Dell ecosystem that is engineered and tested for a seamless experience with your Dell Pro 24 All-in-One.



Purpose-built, integrative design

Work in comfortable style and create a seamless multi-display workspace with a choice of matching stands and Dell displays. Experience all-day productivity with ergonomic features like tilt, swivel and 90-degree rotation and Low Blue Light-certified touch and non-touch displays^{1,2}.

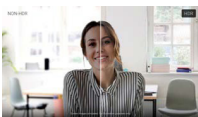
A. Dell Pro 24 All-in-One Basic Stand

B. Dell Pro 24 All-in-One Height Adjustable Stand

Enhance collaboration

Look your best

Look great, even in high-contrast lighting, with the FHD HDR camera. High dynamic range (HDR) technology automatically adjusts clarity in any lighting environment including low light, direct sunlight or high contrast lighting conditions with greater tonal range. And, when you're ready for privacy, simply push the pop-up camera down to hide it.



Discover high-quality audio

Choose smart collaboration with select models offering the longest listening time of up to 80 hours in its class³, enabling focused work anywhere you go.



More advanced drop-in-box options

Ensure same-time delivery and easy setup with Dell drop-in-box wireless keyboards and combos. Dell wireless keyboards offer up to 36 months of battery life for long-term performance⁴. Select models include silent keys for quiet, focused typing in open office environments.



Your thin client solution in 3 easy steps

Meet the evolving needs of the workforce and increase efficiency without compromising on security with Cloud Client Workspace software and Dell thin client solutions. Pair our thin client software options with industry-leading Dell Pro systems for a personalized VDI endpoint solution delivering smarter user experiences and stronger security.

1 Select the Thin Client Software

Dell ThinOS¹

The most secure thin client OS* is purpose-built for VDI to deliver a simplified end-user and IT experience.

[Learn more >](#)

Windows 11 IoT Enterprise LTSC¹

Power and familiarity of Windows® in a thin client optimized by Dell with robust security features and flexible management options.

[Learn more >](#)

2 Choose a Form Factor

Laptop, All-in-One and desktop form factor options give you the freedom to create a personalized virtual workspace. Work in confidence anywhere and enable a more productive and collaborative VDI experience with our new premium devices².



OptiPlex 3000 Thin Client

The OptiPlex 3000 Thin Client delivers a quiet, durable computing experience and makes it easier to multi-task.



Dell Pro 24 All-in-One
(QC24251) [35W]

Sleek, space-saving All-in-One thin client solution that combines performance with collaboration features.



Dell Pro 14
(PC14250)

Work confidently with this reliable laptop equipped with essential performance features.



Dell Pro 16 Plus³
(PB16250)

Boost productivity with a large 16" display and a numeric keypad for data entry accuracy.

3 Add Wyse Management Suite Pro

An enterprise-class solution that provides modern and secure management of all your Dell thin client solutions from anywhere. Securely manage a distributed workforce with a hybrid cloud solution designed to meet all deployment levels.

[Click here to learn more about Cloud Client Workspace.](#)

* Based on Dell analysis of Dell ThinOS in Appliance Mode vs. competitive products, January 2025. CLM-006980

¹ Offering may vary by country and by configuration and operating system. Some items may be available after product introduction.

² Product images are not to scale. Refer to specifications for accurate measurements

³ ThinOS 10 is a customer install option available for select configuration options and capabilities of the Dell Pro 16 Plus. ThinOS 10 can be manually installed from a USB key or deployed to units shipped with factory-installed Ubuntu 24.04 for Managed Clients. The required ThinOS 10 subscription license is sold separately.

Simplify client refresh with Dell Services

Enabling every step of the PC lifecycle

Dell Technologies APEX

1st

and most comprehensive¹

As-a-service portfolio that spans from multi-cloud to client devices.

Experience the flexibility to transform your IT and deploy the latest technologies at predictable costs.

Dell APEX PC-as-a-Service²

Fully customizable monthly subscription that can include PCs, peripherals, software and services with no upfront investment.

[Dell APEX PC-as-a-Service \(PCAAS\) >](#)

ProDeploy Client Suite

PC refresh starts with getting new devices in the hands of your end-users. Dell ProDeploy Suite streamlines operations and increases productivity with configured PCs that are ready to use on day one with dynamic cloud-based provisioning and imaging.

When transitioning from old to new technology, ProDeploy Plus includes the ability to securely erase sensitive end-user data with sophisticated tools to sanitize devices and includes Asset Recovery Services for responsible retirement.

[Dell ProDeploy Client Suite >](#)

Modern Lifecycle Solutions

Dell Premier

324%

ROI over 3 years⁴

Modernize IT purchasing by shopping your catalog in a tailored online solution. Gain control over the entire IT ecosystem to cut costs, standardize ordering, access analytics and more.

[Dell Premier >](#)

Asset Recovery Services

2.8B

Pounds of electronics recovered through all recovery programs since 2007³

Let Dell help you securely and responsibly retire your old IT equipment - regardless of brand - to allow for a seamless transition from old to new technology, while protecting both your business and the planet.

[Asset Recovery Services >](#)

ProSupport Suite for PCs

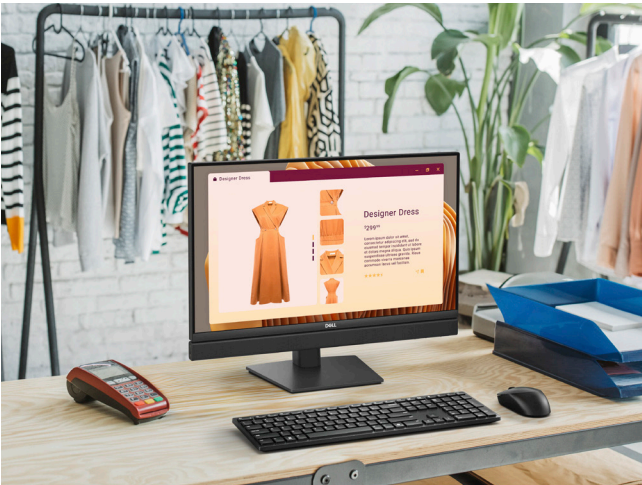
ProSupport Suite is more than a 24/7 break-fix solution, it's a set of tools that automate and optimize your environment with little to no human intervention or end-user disruption.

Select from a robust library of Dell-authored scripts that correct company-wide issues quickly, minimizing remediation times and maintaining peak system performance. ProSupport Suite provides telemetry-driven data to arm IT with insights and make targeted updates, all controlled from a single dashboard.

[ProSupport Suite for PCs >](#)

Work your way

This space-saving All-in-One with built-in camera, mics and speakers can optimize productivity and collaboration for a variety of workstyles. Whether you are in hospitality, retail, healthcare or another sector, maximize the efficiency of your virtual environment and empower teams to perform at their best with our Dell Pro 24 All-In-One thin client solution.



[Explore 360 view >](#)

Feature	Dell Pro 24 All-In-One 35W (QC24251)
Processor	Up to Intel® Core™ i5 processors (35-Watt) (14th Gen)
Chassis color options	Dark Grey
Stand options	Fixed stand or Height adjustable stand
Camera	FHD HDR (High Dynamic Range) camera
Speakers	2 x 2 Watt audio
Graphics	Integrated Graphics
Memory	Up to 32GB DDR5 memory
Storage	1 M.2 slot with up to 512GB SSD
Power supply	External Power Adapter
Native USB ports	6 USB ports (includes 1 USB-C port)
Native video ports	1 DisplayPort++ 1.4a port supporting up to 5K resolution at 60 Hz
Service terms	1 year



Not All Technical Specifications Available Per System Configuration.

[Please search Dell.com/support for product owner's manual or contact your Dell Technologies sales expert.](#)

FEATURE	TECHNICAL SPECIFICATION
PRODUCT NAME	Dell Pro 24 All-In-One 35W
MODEL IDENTIFIER	QC24251
CHASSIS¹	Dark Grey
THIN CLIENT OPERATING SYSTEM OPTIONS^{1,2}	Dell ThinOS 10 Windows 11 IoT Enterprise LTSC 2024
DISPLAY¹	23.81", FHD 1920x1080, 1500:1 contrast ratio, 100 Hz refresh rate, IPS, Non-touch, Anti-Glare, 250 nit, 99% sRGB, ComfortView Plus 23.81", FHD 1920X1080, 1000:1 contrast ratio, 75 Hz refresh rate, IPS, Touch, Anti-Glare, 300 nit, 99% sRGB, ComfortView Plus
PROCESSOR OPTIONS¹	Intel® Core™ 300T (2 cores, up to 3.4G Hz) Intel® Core™ i3 14100T (4 cores, up to 4.4 GHz) Intel® Core™ i5 14500T (14 cores, up to 4.8 GHz) Intel® Core™ i5 14600T (14 cores, up to 5.1 GHz)
MEMORY OPTIONS^{1,2}	For Intel® Core™ i5-14600T: 8 GB, 1 x 8 GB, DDR5, 5600 MT/s, single-channel 16 GB, 2 x 8 GB, DDR5, 5600 MT/s, dual-channel 16 GB, 1 x 16 GB, DDR5, 5600 MT/s, single-channel 32 GB, 2 x 16 GB, DDR5, 5600 MT/s, dual-channel 32 GB, 1 x 32 GB, DDR5, 5600 MT/s, single-channel For Intel® 300T/Intel® Core™ i3-14100T/Intel® Core™ i5-14500T 8 GB: 1 x 8 GB, DDR5, 4800 MT/s, single-channel 16 GB: 2 x 8 GB, DDR5, 4800 MT/s, dual-channel 16 GB: 1 x 16 GB, DDR5, 4800 MT/s, single-channel 32 GB: 2 x 16 GB, DDR5, 4800 MT/s, dual-channel 32 GB: 1 x 32 GB, DDR5, 4800 MT/s, single-channel
STORAGE OPTIONS^{1,3}	HDD: None SSD: 512 GB SSD 256 GB SSD
CHIPSET¹	Intel® Q670
GRAPHICS OPTIONS	Integrated: Intel® Q670
PORTS	Right: 1 USB 3.2 Gen 2 (10 Gbps) port with PowerShare Left: 1 Global headset jack Below Display: 1 USB 3.2 Gen 2 (10 Gbps) Type-C® port Back panel: 2 USB 3.2 Gen 1 (5 Gbps) ports 2 USB 2.0 ports with SmartPower On 1 DisplayPort++ 1.4a/HDCP 2.3 port 1 RJ-45 Ethernet Port (1 Gbps)
SLOTS	Energy Efficient (35W): 1 M.2 2230 slot for Wi-Fi and Bluetooth combo card 1 M.2 2230/2280 slot for solid-state drive 1 SD-card slot 1 security-cable slot (3 mm x 7 mm, T-Bar design)
WIRELESS OPTIONS	Intel® Wi-Fi 6E AX211, 2x2, 802.11ax, MU-MIMO, Bluetooth® 5.3 wireless card MediaTek Wi-Fi 6 MT7920, 2x2, 802.11ax, MU-MIMO, Bluetooth® 5.4 wireless card – coming soon Intel® Wi-Fi 7 BE200, 2x2, 802.11be, MU-MIMO, Bluetooth® 5.4 wireless card Card (Wi-Fi 7 feature support for ThinOS 10 is coming soon)
CAMERA & MICROPHONE¹	1920 x 1080 at 30 fps FHD RGB camera, Dual-array microphones
AUDIO & SPEAKERS¹	Internal stereo speakers with Realtek ALC3204, 2W x 2 = 4W total
POWER	35W External AC adapter (130W/180W 7.4mm barrel)
DIMENSIONS	Height (Front): 13.95 in. (354.30 mm) Height (Rear): 13.95 in. (354.30 mm) Width: 21.26 in. (540 mm) Depth: 2.28 in. (57.90 mm) Starting weight (Fixed stand): 15.69 lb (7.12 kg) Maximum Weight (Fixed stand): 18.57lb (8.43 kg) Starting weight (HAS stand): 17.83 lb (8.09 kg) Maximum Weight (HAS stand): 20.71 lb (9.40 kg) Starting weight (without stand): 11.49 lb (5.22 kg) Maximum Weight (without stand): 14.38 lb (6.53 kg)



Leading the industry in sustainable practices to reduce the environmental impact of our products and packaging.

Learn more: <https://www.dell.com/en-us/lp/dt/sustainable-devices>

FEATURE	TECHNICAL SPECIFICATION	
MODEL NUMBER¹	Dell Pro 24 All-In-One 35W	
SUSTAINABLE MATERIALS¹	Post-consumer recycled plastic (PCR) and closed loop ITE derived plastic – chassis: 52% Recycled or renewable packaging materials: up to 100%	
ECO-LABELS¹	EPEAT Climate+: EPEAT Gold with Climate+ TCO Certified: Yes	EPEAT: Gold Energy Star: Yes
MULTI-PACK SHIPPING¹	Dell Multi-pack: N/A	
ASSET RECOVERY SERVICES⁵	Asset Recovery Services: Yes	
GLOBAL COMPLIANCE	US CEC MEPS compliant configurations available Australia and New Zealand MEPS compliant configurations available CEL WEEE Japan Energy Law South Korea E-standby EU RoHS China RoHS	
REGULATORY⁴	Product Safety, EMC and Environmental Datasheets Dell Regulatory Compliance Home Page Dell and the Environment	

Product Disclaimers/Citations

Page 2 (Product wheel)

1. Based on Dell analysis of Dell ThinOS in Appliance Mode vs. competitive products, January 2025.
2. Dell Pro 24 All-in-One 65W and Dell Pro 24 All-in-One Plus: Global (except China): TÜV Rheinland Certified (ID#1111265308 - Low Blue Light Content). China only: TÜV Rheinland Certified (ID#0000084862 - Low Blue Light Content). For more details, visit www.tuv.com.
3. Dell Pro 24 All-in-One 35W: Global (except China): TÜV Rheinland Certified (ID#1111265309 - Low Blue Light Content). China only: TÜV Rheinland Certified (ID#0000084863 - Low Blue Light Content). For more details, visit www.tuv.com.
4. Dell is the world's #1 monitor company. Source: IDC Worldwide Quarterly PC Monitor Tracker, Q4 2024.
5. Dell Pro All-in-One PCs with Intel® processors.
6. Source: Based on Dell Quality Intelligence (Qi) too - Dell Internal Analysis, January 2025.
7. Based on Dell Analysis, April 2024.
8. EPEAT Gold Registration with Climate+ and TCO certification apply to the Dell Pro 24 All-in-One 35 watt and Dell Pro 24 All-in-One Plus. Dell Pro 24 All-in-One 65 watt is EPEAT Silver registered with Climate+ Based on internal analysis, February 2025. EPEAT registered where applicable. EPEAT registration varies by country. See www.epeat.net for registration status by country. TCO certification with select Windows 11 IoT Enterprise configurations only (not available with ThinOS. Energy Star with Windows 11 IoT Enterprise and Dell ThinOS configurations coming soon.
9. Based on internal analysis, January 2025. Percentage is based on system plastic weight. Post-consumer recycled plastic: up to 43%, Closed-Loop ITE derived plastic: up to 11%.
10. Contains up to 96.3% recycled content and up to 41.5% renewable materials. Renewable materials in the form of sustainably forested materials. Percentages may vary slightly by region [and formfactor]. Excludes optional items added to order and included in the box.

Page 3 (Sustainable Innovation)

1. Based on internal analysis, January 2025. Percentage is based on system plastic weight. Post-consumer recycled plastic: up to 41%, Closed-Loop ITE derived plastic: up to 11%. Recycled glass is in the panel.
2. Contains up to 96.3% recycled content and up to 41.5% renewable materials. Renewable materials in the form of sustainably forested materials. Percentages may vary slightly by region [and formfactor]. Excludes optional items added to order and included in the box.
3. EPEAT Gold Registration with Climate+ and TCO certification apply to the Dell Pro 24 All-in-One 35 watt and Dell Pro 24 All-in-One Plus. Dell Pro 24 All-in-One 65 watt is EPEAT Silver registered with Climate+ Based on internal analysis, February 2025. EPEAT registered where applicable. EPEAT registration varies by country. See www.epeat.net for registration status by country. TCO certification with select Windows 11 IoT Enterprise configurations only (not available with ThinOS. Energy Star with Windows 11 IoT Enterprise and Dell ThinOS configurations coming soon.

Page 4 (Elevate your thin client experience)

1. Dell Pro 24 All-in-One 65W and Dell Pro 24 All-in-One Plus: Global (except China): TÜV Rheinland Certified (ID#1111265308 - Low Blue Light Content). China only: TÜV Rheinland Certified (ID#0000084862 - Low Blue Light Content). For more details, visit www.tuv.com.
2. Dell Pro 24 All-in-One 35W: Global (except China): TÜV Rheinland Certified (ID#1111265309 - Low Blue Light Content). China only: TÜV Rheinland Certified (ID#0000084863 - Low Blue Light Content). For more details, visit www.tuv.com.
3. Based on Dell analysis (busy light and ANC off mode) of battery life usage, July 2024. Results vary depending on use, operating conditions and other factors. Applies only to Dell Pro Premium Wireless Headset – WL7024.
4. Based on Dell analysis, January 2025.

Page 6 (Simplify Client refresh with Dell Services)

1. Based on Dell internal analysis, April 2023.
2. Payment solutions provided and serviced by Dell Financial Services L.L.C. or its affiliate or designee ("DFS") for qualified customers. Offers may not be available or may vary in certain countries. Where available offers may be changed without notice and are subject to product availability, applicable law, credit approval, documentation provided by and acceptable to DFS and may be subject to minimum transaction size. Offers not available for personal, family or household use. Dell Technologies and the Dell Technologies logo are trademarks of Dell Inc. Restrictions and additional requirements may apply to transactions with governmental or public entities. At the end of the contract, the customer may renew the contract or return the equipment to DFS.
3. Dell Technologies has recovered 2.8 billion pounds of electronics since 2007. Source: Based on Dell internal analysis of publicly available data, April 2023.
4. Based on a Forrester Total Economic Impact™ Study Commissioned by Dell Technologies and AMD, "The Total Economic Impact™ Of Dell Premier," February 2024. Full study: The Total Economic Impact™ of Dell Premier.

Technotes:

1. Offering may vary by region. Some items may be available after product introduction. For complete details, refer to the Owner's Manual published on www.dell.com/support.
2. System Memory and Graphics: Significant system memory may be used to support graphics, depending on system memory size and other factors.
3. 4GB or Greater System Memory Capability: A 64-bit operating system is required to support 4GB or more of system memory.
4. Particular versions of Microsoft Windows may not support the full Bluetooth 5.0 functionality.
5. Storage Option: GB means 1 billion bytes and TB equals 1 trillion bytes; actual capacity varies with preloaded material and operating environment and will be less.
6. TPM is available in selected regions.
7. Please refer to www.epeat.net for specific country registration rating and participation.
8. Limited Hardware Warranty: For copy of Ltd Hardware Warranty, write Dell USA LP, Attn: Warranties, One Dell Way, Round Rock, TX 78682 or see www.dell.com/warranty.
9. Onsite service after Remote Diagnosis: Remote Diagnosis is determination by online/phone technician of cause of issue; may involve customer access to inside of system and multiple or extended sessions. If issue is covered by Limited Hardware Warranty (www.dell.com/warranty) and not resolved remotely, technician and/or part will be dispatched, usually within 1 business day following completion of Remote Diagnosis. Availability varies. Other conditions apply.
10. Dell Services: Availability and terms of Dell Services vary by region. For more information, visit www.dell.com/servicedescriptions.
11. For complete listing of declarations and certifications, refer to the Dell Regulatory and Environmental Datasheet found in the Manuals section of Product Support information www.dell.com/support/home/us/en/19.
12. Dell ThinOS and Windows 11 IoT Enterprise LTSC 2024 thin client operating system options are available with select configuration options and support select capabilities of the Dell Pro 24 All-in-One 35W. For more information, visit dell.com/CloudClientWorkspace.