

# Revolutionizing Telecom Networks with AI-Powered Infrastructure

78% of all organizations surveyed prefer a primarily on-premises or hybrid GenAI model<sup>1</sup>

Artificial intelligence (AI) is transforming the Telecom industry. For communications service providers (CSPs) facing increasingly complex networks, AI enables real-time insights, automation and optimization. It's a vital differentiator that can generate significant competitive advantage.

Investing in infrastructure such as the Dell PowerEdge XE7745 delivers the performance, security and cost efficiency needed for CSPs to support a rapidly increasing number of compute-intensive AI workloads, while providing a foundation to:



Develop and deploy AI in their own organization and over their networks



Adapt to evolving customer demands to stay ahead of the market



Explore and capitalize on new revenue opportunities

## Dell AI for Telecom with AMD

With CSP demand for new AI solutions growing, Dell Technologies and AMD provide the high-performance infrastructure needed to generate innovative Telecom outcomes. Their ecosystem of hardware (including current and next-gen CPUs and GPUs), software, partners and expertise can be combined with access to open-source platforms that enables CSPs to accelerate their AI adoption and produce revenue-generating services.



## Dell PowerEdge XE7745

Delivering the flexibility and scalability needed for today and tomorrow's Telecom demands, the Dell PowerEdge XE7745 server is purpose-built for accelerated AI versatility. Supporting both current and next-gen CPUs and GPUs, the 4U air-cooled XE7745 easily integrates into current data infrastructure. CSPs can fine-tune their core ratio and achieve optimal performance across a diverse range of workloads, including:



Inferencing



Model fine tuning



High-performance computing



### Purpose-Built:

Supports up to 8 double wide or 16 single wide PCIe GPUs for dense acceleration AI performance.

2X MORE PCIe GPU CAPACITY

### Intelligent:

A choice of GPU and AI fabric options, backed by an open ecosystem of AI solutions to supply much-needed flexibility.

UP TO 192 CORES PER CPU

### Cyber Resilient:

Infrastructure is fortified by a dedicated platform security co-processor and AMD Infinity Guard.

256 BIT AES ENCRYPTION

### 2 SOCKET CAPABLE:

- M-HS compliant MB (5th Gen AMD EPYC™ processors)

### ACCELERATOR OPTIMIZED:

- Up to 8x DW accelerators (600W)
- Up to 16x SW
- PCIe accelerator vendor and type flexibility



### SUPPORT FOR UP TO 8 DRIVES:

- 8x E3.s direct attach
- BOSS capable

### SUPPORT FOR HIGH-SPEED AND MEMORY CAPACITY:

- 32 DDR5 DIMMS

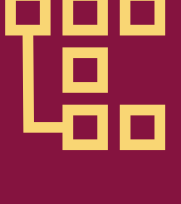
### FLEXIBLE I/O:

- Up to 8x PCIe Gen5 slots
- One OCP 3.0 slot Gen5

By integrating the Dell PowerEdge XE7745 with AMD EPYC™ processors into their data centers, CSPs can run AI workloads that:



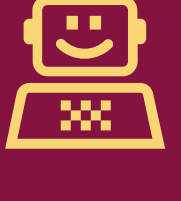
Improve network performance



Streamline processes



Capitalize on new opportunities



Enhance decision making



## Build for the future of Telecom

Investing in infrastructure such as the Dell PowerEdge XE7745 enables CSPs to stay at pace with the latest AI innovations and generate significant competitive advantage. Discover how working with Dell Technologies and AMD can power Telecom innovation today:

[Learn More](#)