



Dell Pro Precision and Dell Pro Max Workstations and AI Accelerators

The #1 workstation brand in the world¹

Dell Technologies also provides the most secure² and manageable PCs in the world.²

1Source: IDC Quarterly Workstation Tracker, Q4 2024

2Based on Dell internal analysis, January 2025. Most-manageable commercial PCs when comparing the systems management capabilities of Dell Update Processes, Dell Manageability Solution capabilities and integrations with 3rd Party Management Solutions, with competitor update processes, systems management solution capabilities and integrations with 3rd party management solutions.

3rd Party Management Solution - Microsoft Intune, is a separate purchase.

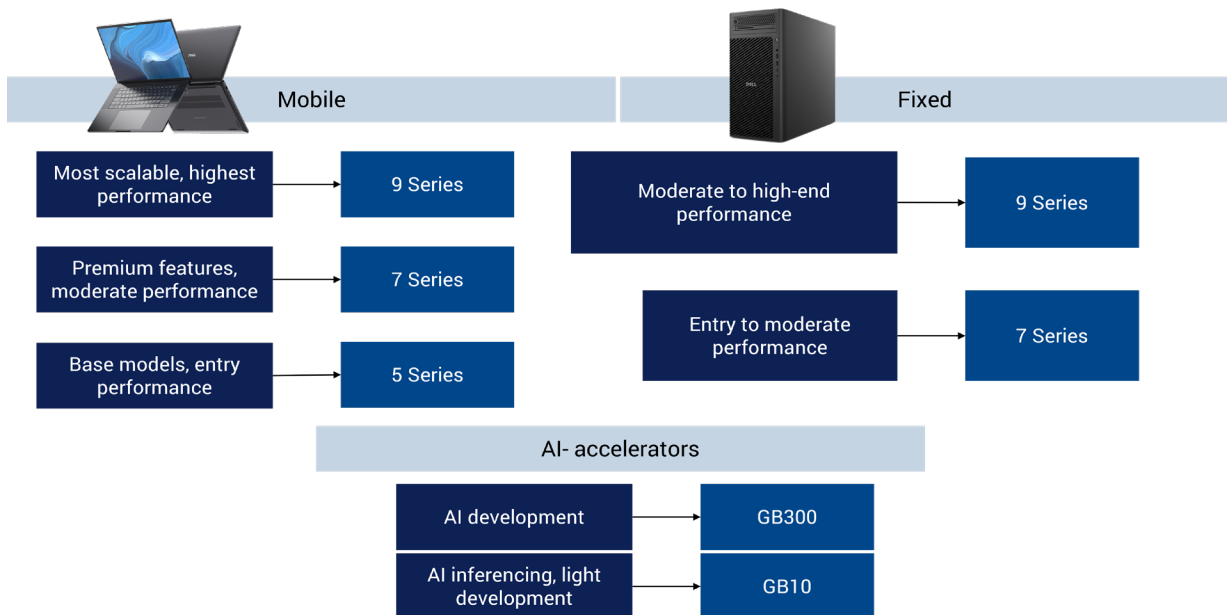
Power your passion



New product branding

We are transitioning Dell Pro Max workstations to a new brand category, Dell Pro Precision. This transition started in January 2026 and all products will evolve into the new brand through the first half 2027. Thank you for your patience during this time and for your continued commitment to Dell Technologies.

You can trust the new Dell Pro Precision performance PCs will do more than ever before as we bring out new technologies with the launch of all-new products. To help you understand the new product branding, we've provided this chart below:



Unbridle your potential

For over 25 years, Dell Technologies has delivered versatile designs, top performance and reliability to enable you to conquer your most demanding applications. From award-winning filmmakers and animators to state-of-the-art architects, engineers, and data scientists and VR developers, our expansive portfolio enables you to customize a solution that powers your passion, purpose and creative expertise.

Learn more at Dell.com/Dell_Pro_Precision

The Dell Advantage



Dell Pro Precision and Pro Max workstations sport the latest technologies, security features and designs.

Intelligent performance

Dell Pro Precision and Pro Max workstations deliver maximum performance with new Intel and AMD processors that feature advanced AI technology, as well as enhanced integrated graphics. Together the CPU, NPU and GPU provide for power efficiency.⁷ In fact, we offer a broad range of Intel and AMD processors to provide customizable processing power to fit your workloads. Combined with the latest professional NVIDIA and AMD graphics, as well as massive memory and expansive storage options you can power through some of the most computational and graphical applications at your desk or on the go.

Performance technologies

- New Intel and AMD processors with AI technologies
- New and more powerful integrated graphics
- Professional graphics from NVIDIA and AMD
- Qualcomm AI-100 PC Inferencing Card (enterprise-class discrete NPU)
- Gen 5 SSD storage
- Ultra-fast PCIe SSD storage options
- Thunderbolt™ 5 technology
- DDR5 memory, up to 8533MT/s
- Advanced thermal solutions

Advanced Security

Reduce the attack surface of your fleet with the industry's most secure commercial PCs.¹ Rigorous supply chain controls ensure PCs are secure from first boot, while unmatched hardware security keeps devices protected in-use.

Security technologies

- Lockable and removable storage
- Lockable chassis
- Chassis intrusion sensors
- Privacy shutters on cameras
- Facial recognition
- Fingerprint readers
- Security software suites
- Post Quantum Computing Compliant
- Control Vault 3+
- Contacted/less Smart Card readers

Innovative design

Experience unrestrained innovation with the new thin, light and premium-designed mobile workstations. These devices can feature UHD+, HDR, OLED and Touch display options. Unique designs in multiple form factors deliver ultimate scalability, including rack, small form factor, and tower workstations. Additionally, select towers have FlexBays for easy part replacements, as well as multi-channel advanced cooling for outstanding acoustics and thermal performance.

Design technologies

- Small and light devices pack more performance while offering plenty of storage space and mobility - perfect for hybrid work environments
- Narrow bezel displays provide an immersive experience while maximizing viewing space
- ComfortView Plus reduces the amount of blue light emitted from the display to optimize eye comfort
- Active Touch displays provide for precise interaction with your workstation
- Customize and scale to meet your performance needs with multiple form factors and expansion options
- Fast connectivity options, including Wi-Fi 6E or 7, 5G, 4G LTE, Bluetooth 5.4 & eSIM4
- Windows and Linux operating systems are available

Note: Not all systems are available with these technologies

¹ Based on Dell internal analysis, September 2023. Applicable to PCs on Intel vPro processors. Not all features available with all PCs. Additional purchase required for some features.

Leveling up your capabilities

Rest easy knowing your Dell Pro Max and Precision workstations are designed for the technologies of today and into the future.



Outstanding reliability

Dell invests thousands of hours with Independent Software Vendors (ISV) to rigorously test our Dell Pro Precision and Max workstations so we can deliver a fully optimized solution to you. These software partners team with us and our customers to ensure the best user experience possible. Learn more about [ISV Certifications](#)

Dell exclusive, BIOS-based, Reliable Memory Technology Pro augments Error Corrective Code (ECC) memory, which automatically fixes single-bit memory errors. RMT Pro identifies and maps out bad memory sectors on the DIMM so they aren't accessed again following a reboot, which helps avoid memory errors and blue screens. The software also warns the user when DIMMs are at a critical point to failure and should be replaced.

Our mobile systems are MIL-SPEC tested to ensure they are robust and can handle typical wear and tear that comes with traveling. Also, Dell ProSupport Plus is the most complete service and support offering in the industry, so you can have both quality products and the ultimate services to go along with them.

Reliability technologies

- ISV Certifications
- MIL-STD 810H
- Intel processors with vPro
- Error Correcting Code (ECC) Memory
- Reliable Memory Pro Software
- Dell ProSupport

READY FOR



Driving Emerging Technologies

Dell Pro Precision and Max workstations are the foundation of virtual and augmented reality content creation and advanced commercial visualization. Our broad Ready for VR portfolio combined with the Dell Technology Partner Program are bringing futuristic efficiency and innovation to every office.

Dell Pro Precision and Max workstations and AI Accelerators also deliver the power to deploy and manage cognitive technology platforms, including Machine Learning, Deep Learning, and Artificial Intelligence, to help businesses solve complex problems and gain actionable insights from their data. Dell Pro Max and Precision solutions are a key part of the Dell and NVIDIA AI Factory.

Learn more about AI-ready solutions at Dell.com/ai

Note: Not all systems are available with these technologies

Performance vital for variety

From 3D animation to financial analytics, Dell Pro Max high performance PCs and workstations are purpose-built to power industry leaders across a wide variety of professional landscapes. Explore our industries below to find out how you can leverage Dell Pro Max to support your workflow.

Media and entertainment

Become an expert at your digital content workflow with a Dell Pro Precision partnered with Adobe, Avid, Autodesk, and many other media ISVs.

[Learn more →](#)

Manufacturing and engineering

Quickly bring products to market, improve design, and reduce prototypes with Autodesk, Dassault Systems, ANSYS, and other software powered by Dell Pro Precision.

[Learn more →](#)

Healthcare and life sciences

Maneuver telemedicine, EMR systems, and PACS images through partnerships with GE Healthcare, Barco, Cerner, and Epic.

[Learn more →](#)

Need help finding the right workstation for you?

Visit our [Workstation Advisor](#)—an interactive tool that helps identify your unique system configuration based on your workflows or use case.

Oil and gas

Complex workflow models and big data analytics are no match for workstation-class power combined with Halliburton, Schlumberger, and IHS Markit support.

[Learn more →](#)

State and Local Government

Learn how Dell Pro and Dell Pro Max fit within state and local government use cases.

[Learn more →](#)

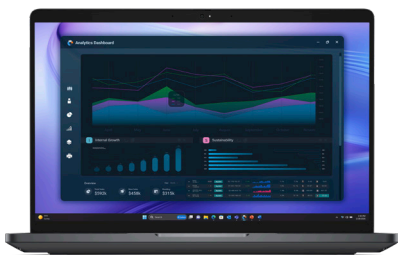
Economics and financial services

Dell Pro Precision workstations power trading floors, financial analysis, and banking through partnerships with financial institutions and ISVs.

[Learn more →](#)

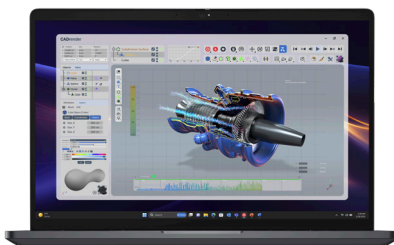
Dell Pro Precision 5 Series 14 and 16 Laptops

Precision 5 Series 14 and 16 Laptops up your technology to match your skills with affordable workstation performance and reliability in a versatile package. Essential for design, creative content, financial analysis, and Microsoft power-users.



Dell Pro Precision 5 Series 14 Laptop

Experience reliable performance and effortless mobility with the Dell Pro Precision 5 Series 14, built for professionals on the move. Its thin, modern design features a new aluminum top cover and has a starting weight of under 4 pounds, making it easy to carry anywhere. Inside, Series 3 Intel Core Ultra processors with a 50 TOPS NPU and fast Intel Arc integrated graphics handle demanding workloads with ease. For advanced creative and technical tasks, you can add optional professional NVIDIA graphics. Your work comes to life on a vibrant FHD+ display that delivers crisp, clear visuals. You can also enhance teamwork with an optional 8MP IR camera, which provides incredible clarity for collaboration.



Dell Pro Precision 5 Series 16 Laptop

Discover dependable performance and premium mobility with the Dell Pro Precision 5 Series 16. Designed for professionals who need a larger screen without sacrificing portability, this laptop features a lightweight build under five pounds. Inside, it contains Series 3 Intel Core Ultra processors and fast Intel Arc integrated graphics, delivering the power to handle your daily workloads. For more intensive creative and technical projects, you can add optional professional NVIDIA graphics. The vibrant 16-inch QHD+ display option provides an expansive canvas for your ideas, while the full-sized keyboard and large clickpad ensure comfortable and efficient interaction. Enhance your virtual meetings and collaboration with the optional 8MP UPD camera.



Dell Pro Max 16

Discover the Dell Pro Max 16, a versatile and cost-effective laptop designed for power users and creative professionals. This mobile workstation provides an ideal balance of performance, mobility, and price. It features up to powerful AMD Ryzen™ AI PRO 400 Series Processors with Radeon™ Pro graphics integrated graphics to manage your daily tasks and multitasking with ease. For more demanding design applications, you can add optional NVIDIA RTX Pro 1000 graphics. The expansive 16-inch QHD+ display with a 16:10 aspect ratio gives you more screen space for your projects. A full-size keyboard with a number pad and a large clickpad ensure comfortable and efficient use. With advanced connectivity options, including Wi-Fi 7, 5G and up to 20hrs battery life.

Dell Pro Precision 7 Series 14 and 16 Laptops

Stay in your creative zone with enhanced performance designed to impress with a combination of style and capability. Perfect for users on-the-go with a light, but robust design, these devices are intended for design, creative, and other mainstream applications.



Dell Pro Precision 7 Series 14 Laptop

Experience exceptional performance and sophisticated style with the Dell Pro Precision 7 Series 14. This compact and lightweight laptop delivers the power you need to bring your biggest ideas to life, wherever you work. It features advanced Intel Core Ultra 7 and 9 processors with an up to 50 TOPS NPU, which works with fast Intel Arc integrated graphics (up to 12 Xe) to handle demanding professional applications with ease. For next-level creative and technical tasks, you can add optional NVIDIA RTX Pro 2000 graphics. Your work will look stunning on the brilliant QHD+ Tandem OLED display. The zero-lattice keyboard and glass haptic trackpad provide a comfortable, responsive user experience. You can also enhance collaboration with an optional 8MP camera and advanced connectivity, including Thunderbolt and a Micro-SD card reader.



Dell Pro Precision 7 Series 16 Laptop

Discover exceptional performance and premium mobility with the Dell Pro Precision 7 Series 16. It is designed for professionals who need a larger screen and powerful performance. This compact and lightweight laptop features Series 3 Intel Core Ultra processors with an up to 50 TOPS NPU and up to Intel Arc Pro 12 Xe integrated graphics, giving you the power to handle your daily workloads. For more intensive creative and design projects, you can add optional NVIDIA RTX Pro 3000 graphics. The stunning 16-inch UHD+ Tandem OLED display provides an expansive canvas for your ideas, while the zero-lattice keyboard and glass haptic trackpad ensure comfortable, efficient interaction. You can enhance teamwork with an optional 8MP camera and advanced connectivity.

Note: Some components may vary throughout the product life cycle and regional offerings.

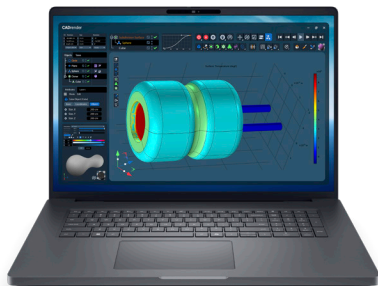
Dell Pro Max 16 & 18 Plus

Put power behind your purpose with ultra-scalable mobile performance and reliability to power massive data sets, design simulations and analysis, rendering, and even VR and AI initiatives. These devices are perfect for energy, healthcare, engineering, and creative applications.



Dell Pro Max 16 Plus

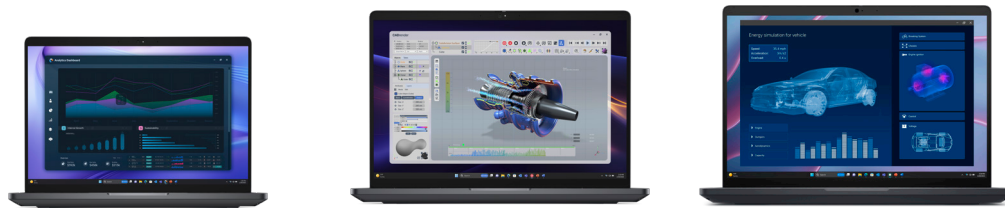
Tackle your most demanding projects with ease. Equipped with Intel Core Ultra (HX) processors, up to NVIDIA RTX PRO™ 5000 Blackwell (24GB) graphics, or new Qualcomm AI-100 discrete NPU, and up to 128GB CAMM2 memory, this laptop redefines power. Handle complex workflows and massive datasets with 12TB of storage with RAID support. With Thunderbolt 5 and an advanced cooling system, you can push limits without overheating or delay. Enjoy unparalleled visuals with up to a stunning 16" UHD Tandem OLED display featuring 4K resolution, 120Hz refresh rate, and VESA HDR-1000 TrueBlack technology. Navigate effortlessly with a full-size keyboard and expansive clickpad. Plus, with an 8MP RGB+IR camera and MaxxAudio Pro sound, virtual collaboration is crystal clear.



Dell Pro Max 18 Plus

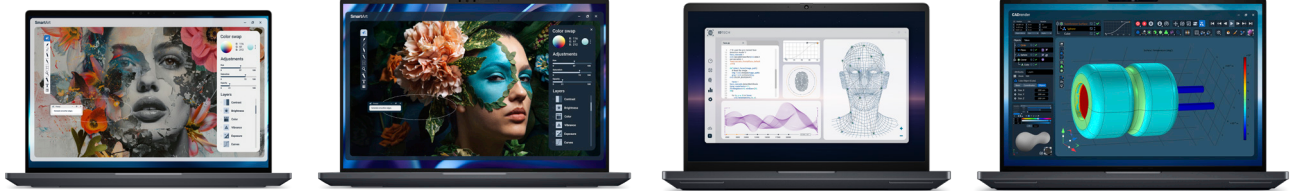
The Pro Max 18 Plus is built for those who won't compromise on power. Its high performance Intel Core Ultra (HX) processor, paired with integrated graphics ensures you stay productive. Backed by NVIDIA RTX PRO 5000 Blackwell graphics, with a massive 24GB of memory, this laptop is engineered to tackle professional-grade applications and AI workloads effortlessly. With support for up to 128GB of CAMM2 memory and an enormous 16TB of storage (plus RAID options), there's ample room for multitasking and storing your large projects. Featuring an incredible 18-inch display, this laptop offers stunning QHD resolution with 500 nits of brightness to deliver amazing visuals that bring your work to life. Its generous 88% screen-to-body ratio maximizes your viewing space while keeping the modern design.

Note: Some components may vary throughout the product life cycle and regional offerings.



	PRO PRECISION 5 14	PRO PRECISION 5 16	PRO MAX 16
DESCRIPTIONS	Small, light 14" performance PC designed for Power Users and light design apps	An affordable and light design 16" performance PC industry specialists	An affordable and light design 16" performance PC for Power Users
RECOMMENDED USE CASES	<p>Great for advanced business application users, AI Inferencing and light design.</p> <p>Use cases: Knowledge workers, photographers, graphic designers</p>	<p>Great for advanced business application users, AI Inferencing and light design.</p> <p>Use cases: Knowledge workers, photographers, graphic designers</p>	<p>Great for graphic design, animation, video and photo editing, light CAD and CAM</p> <p>Use cases: Architects, engineers, video editors, animators, photographers, graphic designer</p>
PROCESSOR (UP TO)	Series 3 Intel® Core™ Ultra 9 Processor 386H	Series 3 Intel® Core™ Ultra 9 Processor 386H	AMD Ryzen AI 9 HX PRO 475 with PRO technologies
GRAPHIC CARD (UP TO)	NVIDIA RTX PRO™ 500-Blackwell (6GB)	NVIDIA RTX PRO™ 2000-Blackwell (8GB)	NVIDIA RTX™ PRO 1000-Blackwell, (8 GB)
MEMORY (UP TO)	64GB, LPCAMM2 LPDDR5X 8533MT/s, non-ECC*	64GB, LPDDR5x 8533MT/s, non-ECC*	64GB, LPDDR5x 8000MT/s, non-ECC*
STORAGE (UP TO)	2TB, Gen 5	4TB, Gen 5	4TB, Gen 5
DISPLAY (UP TO)	14" 16:10 QHD+ Non-touch or FHD+ Touch options available	16" 16:10 QHD+ Non-touch or FHD+ Touch options available	16", QHD+ Non-touch or FHD+ Touch options available
CAMERA (UP TO)	8MP IR Camera*	8MP IR Camera*	8MP IR Camera*
WIDTH	12.32 in. (313 mm)	14.09 in. (358 mm)	14.09 in. (358 mm)
DEPTH	8.95 in. (227.30 mm)	10.08 in. (256 mm)	10.08 in. (256 mm)
HEIGHT	Rear: 0.72 in. (18.33 mm) Peak: 0.93 in. (23.65 mm) Front: 0.55 in. (13.97 mm)	Rear: 0.72 in. (18.36 mm) Peak: 0.97 in. (24.7 mm) Front: 0.54 in. (13.78 mm)	Rear: 0.75 in. (19.08 mm) Peak: Front: 0.59 in. (15.08 mm)
STARTING WEIGHT	3.98lb (1.80kg)	4.77 lbs (2.16 kg)	4.63lbs (2.10kg)
BATTERY (UP TO)	4-cell, 72 Whr	6-cell, 96 Whr	6-cell, 96 Whr

*Note: "Up to" components can vary based on product model. Some components may vary throughout the product life cycle and regional offerings.



PRO PRECISION 7 14

PRO PRECISION 7 16

PRO MAX 16 PLUS

PRO MAX 18 PLUS

DESCRIPTIONS

World's smallest footprint 14" mobile workstation features incredible performance

World's smallest footprint 16" workstation, with scalability and performance

Our most scalable 16" high performance PC delivers amazing power and user experience

Our most scalable and largest screen size workstation, 18", provides massive screen real estate and performance for your complex models

RECOMMENDED USE CASES

Great for graphic design, animation, video and photo editing, CAD and CAM

Use cases:
Architects, engineers, video editors, animators, photographers, graphic designer

Great for graphic design, animation, video and photo editing, CAD and CAM

Use cases:
Architects, engineers, video editors, animators, photographers, graphic designers

Great for VR/AR and AI applications, CAE and other complex apps

Use cases:
Engineers, creators, geophysicist, gaming developers, scientists, animators, graphic designers, heavy compute applications

Great for AI applications, CAE and other complex apps

Use cases:
Engineers, creators, geophysicist, gaming developers, scientists, animators, graphic designers and users of heavy compute, graphical applications

PROCESSOR (UP TO)

Series 3 Intel® Core™ Ultra 9 386H vPro®, 50 TOPS NPU

Series 3 Intel® Core™ Ultra 9 386H vPro®, 50 TOPS NPU

Intel® Core™ Ultra 9 285HX, 13 TOPS NPU

Intel® Core™ Ultra 9 285HX, 13 TOPS NPU

GRAPHIC CARD (UP TO)

NVIDIA RTX™ PRO 2000-Blackwell, (8 GB)

NVIDIA RTX PRO™ 3000 Blackwell (12GB)

NVIDIA RTX PRO™ 5000 Blackwell (24GB)

NVIDIA® RTX™ PRO™ 5000 Blackwell (24GB)

MEMORY (UP TO)

64GB, LPCAMM2 LPDDR5X 8533 MT/s, non-ECC*

64GB (onboard), LPDDR5x, 8533 MT/s, non-ECC*

The 128GB CAMM speed will be 5200MT. 64GB and 128GB CAMM2 will be 6400MT. or 96 GB DDR5, 6400MT/s, CSoDIMM

The 128GB CAMM speed will be 5200MT. 64GB and 128GB CAMM2 will be 6400MT. or 96 GB DDR5, 6400MT/s, CSoDIMM

STORAGE (UP TO)

4TB, Gen 5

8TB, Gen 5

12TB, Gen 4

16TB, Gen 4

DISPLAY (UP TO)

14" 4K UHD+, 60Hz VRR, tandem OLED, VESA-certified DisplayHDR™ True Black 500, Touch option

16" 4K UHD+, 120Hz VRR, tandem OLED, VESA-certified DisplayHDR™ True Black 1000, Touch option

16" Touch, UHD+, 120Hz, OLED, Low Blue Light, VESA HDR TrueBlack 1000

18" QHD+, 120Hz, WVA, Low Blue Light, Non-touch

CAMERA (UP TO)

8MP RGB + IR Camera

8MP RGB + IR Camera

8MP 30 fps HDR RGB+IR camera

8MP 30 fps HDR RGB+IR camera

WIDTH

12.23 in. (310.60 mm)

13.93 in. (353.80 mm)

14.17 in. (360 mm)

15.83 in. (402 mm)

DEPTH

8.36 in. (212.45 mm)

9.46 in. (240.28 mm)

10.18 in. (258.60 mm)

11.02 in. (279.95 mm)

HEIGHT

Rear: 0.74 in. (18.91 mm)
Peak: 0.78 in. (19.72 mm)
Front: 0.74 in. (18.91 mm)

Rear: 0.80 in. (20.24 mm)
Peak: 0.83 in. (21.05 mm)
Front: 0.80 in. (20.24 mm)

Front: 0.68 in. (17.34 mm)
Peak: 1.16 in. (29.4mm)
Rear: 0.75 in. (18.97 mm)

Front: 0.71 in. (17.92 mm)
Peak: 1.19 in. (30.2mm)
Rear: 0.77 in. (19.56 mm)

STARTING WEIGHT

3.51 lb (1.59 kg)

4.78 lb (2.17 kg)

5.63lb (2.55kg)

7.17lb (3.25kg)

BATTERY (UP TO)

4-cell, 72 Whr

6-cell, 96 Whr

6-cell, 96 Whr

6-cell, 96 Whr

Note: "Up to" components can vary based on product model. Some components may vary throughout the product life cycle and regional offerings.

Dell Pro Max Micro, Slim, Tower T2 and Dell Pro Precision 7 T1

Take your ideas to new places with a workstation that matches your skills but doesn't break the bank. Available in compact, small form factor, and a tower design, they are great for space-constrained workspaces, as well as some Edge use cases. These workstations are optimal for financial, design, creative applications, and many more.



Dell Pro Max Micro



The Dell Pro Max Micro is an ultra-compact PC designed for customers with space constraints but demand top-tier performance. With a chassis size of just 2.9L, Micro is one of the smallest mini workstations in the world delivering uncompromised workstation-level performance and extraordinary density. Despite its small size, the Pro Max Micro is engineered for versatility. It can be mounted behind a monitor, placed under a desk, or even racked in a data center—giving customers multiple options based on workspace needs.



Dell Pro Max Slim



Dell Pro Max Slim is a balanced and flexible small form factor PC that offers mainstream workstation-level performance in a space-saving design. For the first time in an 8L chassis, Slim supports a 125W CPU and up to 128GB DDR5 memory, with 360W total power output. This enables it to cover about 80% of regular workstation and desktop power user workloads, all with cost-efficiency. The new optional module offers 9 configurable port options. A third PCIe slot also allows customers to apply more add-in-cards based on their needs.



Dell Pro Precision 7 T1



The Dell Pro Precision 7 T1 is designed to bring workstation performance within reach. Engineered to fuel demanding projects, it features Intel® Core™ Ultra processors with a dedicated NPU for accelerated AI-driven applications and NVIDIA® RTX™ Pro graphics. With up to 128GB of DDR5 memory and expansive storage options, this workstation optimizes workflows and handles large datasets with ease. Tested and ISV-certified for professional software, it ensures applications run seamlessly. Extensive expandability and connectivity options, including Wi-Fi 7, provide the tools needed to maintain productivity and support high-performance workloads.



Dell Pro Max Tower T2



Dell Pro Max Tower T2 is the world's most powerful tower workstation, in its class. Our unlimited turbo duration technology enables the new 125W Inter Core Ultra Processors to consistently operate at a 250W power level, making it the fastest workstation for single-thread performance. Dell Pro Max Tower T2 is also the first tower workstation to support the NVIDIA Blackwell 600W Professional GPU, the most powerful client graphics card in the world—unlocking extraordinary capabilities for demanding visual and AI applications. The Tower T2 is designed for enhanced expandability. With an additional PCIe expansion slot and an upgraded 1500W power supply, the T2 is ready for customers to scale their workloads.

¹Based on internal analysis against comparable products in market. January 2024

Note: Some components may vary throughout the product life cycle and regional offerings.

DELL PRO PRECISION 9

Built for maximum power and scalability, offering increasing performance and expandability as you move up the stack. Ideal for professionals running graphics- and data-intensive workloads, these systems deliver high core counts with Intel® Xeon® 600 Processors for Workstation and advanced graphics support, accelerating AI, simulation, and large-scale data tasks.



Dell Pro Precision 9 T2

Delivers exceptional performance with up to 24 cores for the most demanding workloads. Features NVIDIA® RTX™ Pro Blackwell GPUs up to 6000 and 1TB of DDR5 ECC memory. Its 32L chassis provides extensive scalability with five PCIe slots and a wide range of storage configurations, enabling professionals to tailor performance to their evolving requirements.



Dell Pro Precision 9 T4

The T4 raises the bar for high-performance computing with up to 86 cores. Designed to support a wide range of GPU configurations—including a single 600W GPU, dual 300W GPUs, or up to four 50W GPUs. With up to 4TB of DDR5 memory and a 48L chassis supporting six PCIe slots and nine storage bays totaling up to 124TB, the system scales to meet evolving workflow demands.



Dell Pro Precision 9 T6

World's most scalable tower workstation¹, takes the Precision 9 T4 architecture and adds a full expansion bay that unlocks unprecedented room to grow. It offers up to 86 cores and supports an exceptional range of GPU configurations—including 2x 600W, 5x 300W, or 7x 50W --along with up to 4TB of DDR5 memory. Its 72L expansive chassis offers up to 15 PCIe slots and up to 21 storage bays, creating a future-ready platform built to scale.

¹ Based on Dell internal analysis, comparing similar HP and Lenovo products. February 2026.

7000 Series Tower and Rack

Maximize your productivity with our most scalable workstations available. Featuring full tower designs, as well as a 2U rack workstation, these devices are great for almost any data or graphic-intensive application.



Precision 7875 Tower

Power your productivity with the amazing 7875 Tower, which is ideal for engineers, designers, analysts, and data scientists whose application mix includes multi-threaded, compute intensive or compute-intensive analysis, simulation, and rendering applications requiring high CPU 350W core counts. Features the AMD Ryzen Threadripper™ PRO (280W) processor, with between 12-96 Cores; up to two NVIDIA or AMD Pro 300W graphics and 56TB of RAID capable storage.



Precision 7960 Rack

With the world's most powerful rack workstation² you can experience the highest level of secure remote access and ultimate workstation performance in a 2U rack industrial design. Plus, the Integrated Dell Remote Access Controller (iDRAC) allows you to deploy, update, monitor, and maintain remote workstations with ease. Collaborate across your organization, while keeping your IP in the data center.



	DELL PRO MAX MICRO	DELL PRO MAX SLIM	DELL PRO PRECISION 7 T1	DELL PRO MAX TOWER T2
DESCRIPTIONS	World's smallest workstation available with Tensor Core GPUs. ¹ Compact, Ultra Small Form Factor	Performance & affordability in a small form factor. Small Form Factor	Exceptional workstation performance and reliability at an affordable price point Mid-tower	World's fastest workstation for single-threaded performance. ² Mid-tower Unlimited Turbo Duration (125W CPUs) and Enhanced Performance (65W CPUs) available with new Premium Air Cooling solution
PROCESSOR (UP TO)	Intel® Core™ Ultra Processors (Series 2): Ultra 5 – Ultra 9 (65@85W)	Intel® Core™ Ultra Processors (Series 2): Ultra 5 – Ultra 9 (65W@85W) Ultra 5K – Ultra 9K (125W)	Intel® Core™ Ultra Processors (Series 2): Ultra 5 - Ultra 9 (65W)	Intel® Core™ Ultra Processors (Series 2): Ultra 5 – Ultra 9 (65W@85W) Ultra 5K – Ultra 9K (PL1=PL2@250W)
GRAPHIC CARD (UP TO)	NVIDIA RTX 4000 Blackwell SFF (70W)	NVIDIA RTX 4000 Blackwell SFF (70W)	NVIDIA RTX 4000 Blackwell (140W)	NVIDIA RTX 6000 Blackwell (600W)
MEMORY (UP TO)	64GB DDR5 6400MT/s CSO-DIMM w/ECC options	128GB 4400MT/s DDR5 w/ ECC support	128GB 4400 MT/s DDR5	128GB or up to 4400MT/s DDR5 w/ECC options
STORAGE (UP TO)	2x M.2 SSD, up to 8TB total	3x M.2 SSD, up to 8.5TB total 3.5", up to 8TB total	3x M.2 SSD, up to 5TB total 3.5", up to 4TB total	3x M.2 SSD, up to 12TB total 3x 3.5", up to 24TB total Front access storage
ADD IN SLOTS	PCIe x8 Gen 4 PCIe x1 Gen 4	PCIe x16 Gen 4 PCIe x4 Gen 4 PCIe x1 Gen 4	PCIe x16 Gen 4 PCIe x4 Gen 3 PCIe x1 Gen 3 PCIe x4 Gen 3 (optional expansion board)	PCIe x16 Gen 5 PCIe x4 Gen 4 PCIe x4 Gen 3 PCIe x4 Gen 3
CHASSIS SIZE	2.9L (+0% vs. pred)	8.5L (+7.6% vs. pred)	15L	32L (+18.5% vs. pred)
PSU/POWER ADAPTER	180W, 280W	300W, 360W	260W, 360W	360W, 500W, 1500W

¹Based on internal analysis vs competitive products within in the Ultra small and small form factor workstation space, December 2023.

²Based on internal study of competitors and Dell workstation products, January 2024.

³Based on internal analysis, Sept 2023.

Technical specifications subject to change without prior notice. Product availability varies by country. Please contact your Dell representative for more information. Copyright© 2023 Dell Inc. or its subsidiaries. All Rights Reserved. Dell Technologies, Dell, EMC and Dell EMC are trademarks of Dell Inc. or its subsidiaries. Other trademarks may be trademarks of their respective owners.



	DELL PRO PRECISION 9 T2	DELL PRO PRECISION 9 T4	DELL PRO PRECISION 9 T6
DESCRIPTIONS	Mid-tower with exceptional scalability. Mid-tower	Maximum power. Made for ultimate scalability and performance. Full tower	Engineered for maximum scalability. Full tower
PROCESSOR (UP TO)	Intel® Xeon® 600 Processors for Workstation, up to 24 cores	Intel® Xeon® 600 Processors for Workstation, up to 86 cores	Intel® Xeon® 600 Processors for Workstation, up to 86 cores
GRAPHIC CARD (UP TO)	NVIDIA RTX Pro Blackwell 6000 or AMD	NVIDIA RTX Pro Blackwell 6000 or AMD	NVIDIA RTX Pro Blackwell 6000 or AMD
MEMORY (UP TO)	1TB DDR5 ECC memory	4TB DDR5 ECC memory	4TB DDR5 ECC memory
STORAGE (UP TO)	Up to 100TB storage, RAID 0/1/5/10	Up to 124TB storage, RAID 0/1/5/10	Up to 316TB storage, RAID 0/1/5/10
ADD IN SLOTS	x4 PCIe Gen 5 x16 PCIe Gen 5 x4 (x8 OE slot) PCIe Gen4 x16PCIe Gen4 x8 OE PCIe Gen4	(2) x16 PCIe Gen 5 x8 OE PCIe Gen 5 x8 OE PCIe Gen 4 (2) x4 (x8 OE slot) PCIe Gen 4	Base: (2) x16 PCIe Gen 5 x8 OE PCIe Gen 5 x8 OE PCIe Gen 4 (2) x4 (x8 OE slot) PCIe Gen 4 Expansion: Configure up to 3 PCIe risers, each offers the following: x16 PCIe Gen 5 x8 PCIe Gen 4 x4 PCIe Gen 4
CHASSIS SIZE	32L	49L	72L
PSU/POWER ADAPTER	500W 750W 1500W	1500W 2400W	2400W



PRECISION 7875 TOWER

PRECISION 7960 RACK

DESCRIPTIONS

Dell's highest core count on single CPU.³

Ultimate performance and security in a 2U form factor.

Full tower

2U Rack

PROCESSOR (UP TO)

AMD Ryzen Threadripper™ Pro (350W) processor, up to 96 cores

Up to (2) Intel® Xeon® (350W) processors, up to 56 cores each

GRAPHIC CARD (UP TO)

2x 300W Graphics from NVIDIA or AMD

2x 300W AMD or NVIDIA graphics

MEMORY (UP TO)

2TB 4800MT/s DDR5 ECC memory

8TB 4800MT/s DDR5 ECC memory

STORAGE (UP TO)

56TB storage, RAID 0/1/5/10

128TB storage, RAID 0/1/5/10

ADD IN SLOTS

x16 Gen5 PCIe
x16 PCIe Gen4
(2) x8 PCIe Gen4
x8 PCIe Gen5
x4 (x8 OE slot) PCIe Gen4

(2) x16 PCIe Gen5 FH
x16 PCIe Gen4 FH
(2) x16 PCIe LP
(2) x8 PCIe FH

CHASSIS SIZE

35L
35L

32L

PSU/POWER ADAPTER

1000W
1350W

800W
1100W
1400/2400W

¹Based on internal analysis vs competitive products within in the Ultra small and small form factor workstation space, December 2023.

²Based on internal study of competitors and Dell workstation products, January 2024.

³Based on internal analysis, Sept 2023.

Technical specifications subject to change without prior notice. Product availability varies by country. Please contact your Dell representative for more information. Copyright© 2023 Dell Inc. or its subsidiaries. All Rights Reserved. Dell Technologies, Dell, EMC and Dell EMC are trademarks of Dell Inc. or its subsidiaries. Other trademarks may be trademarks of their respective owners.

Dell Pro Max with GB

Designed for AI developers seeking top-tier AI performance at the desk. These devices are built on NVIDIA's Grace Blackwell Super Chip architecture and pre-configured with NVIDIA's AI software stack to build and run AI workloads effortlessly.



Dell Pro Max with GB10

Exceptional AI inference and development at the desk-side in a compact design. Ideal for developing and testing AI models, efficiently handling up to 200 billion parameters with secure local processing or 400 billion parameters when two GB10 devices are interconnected using NVIDIA's ConnectX-7 network chip.



Dell Pro Max with GB300

AI powerhouse for large-scale, heavy-duty AI workloads. Ideal for large-scale AI development and data-driven workloads. Supports up to 1 trillion parameter models, delivering groundbreaking 20,000 TFLOPS of FP4 compute power to your desk.

Dell Pro Max with GB10

Incredible power in a compact design

NVIDIA GB10 Grace Blackwell Superchip

Up to 280W

128GB LPDDR5x coherent unified memory

Supports up to 200Bn parameter models

One Petaflop (1000 TFLOPS) of FP4 computing power

NVIDIA DGX OS on Linux & NVIDIA AI Enterprise software stack

Can stack two GB10 systems together to multiple performance

Dell Pro Max with GB300

Massive performance for heavy-duty workloads

NVIDIA GB300 Grace Blackwell Ultra Desktop Superchip

Up to 1500W

748GB Coherent memory

Supports up to 1T parameter models

20 Petaflops (20,000 TFLOPS) of FP4 computing power

Ubuntu with NVIDIA AI Developer Tools

Breakthrough thermal design



Sustainable innovation



Built with sustainable materials

The laptops are designed with recycled, renewable or low emission materials like recycled magnesium, post-consumer recycled plastic, bio-based plastic, recycled ocean-bound plastic, and come with a battery and adapter made from recycled cobalt and recycled and low emissions aluminum.¹ Desktops are made with post-consumer recycled plastic, closed-loop plastic and recycled ocean-bound plastic.² The Dell Pro Max Plus ships with an adapter designed with the industry's first, 80% recycled copper in the cable.³



Packaging with purpose

Ships in packaging with 100% recycled or renewable materials⁶ with multipack options for easier unboxing and reduced transportation and packaging waste.⁷



Leading design for PC longevity

The Dell Pro Max portfolio of workstations feature reliable design with modular USB-C ports that are up to 14 times better twist resistance and up to 100 times better impact resistance.⁴ Select models feature modular mainboards and I/O boards for easier repairs and reduced e-waste,⁵ while modular batteries connect to the frame to minimize damage. Designed for durability and longevity, Dell ensures easy access to parts for extended product life.

[Parts, Batteries & Upgrades >](#)



Seamlessly transition from old to new technology

We can help you responsibly and securely retire your legacy IT equipment, regardless of brand, while addressing your sustainability goals.

[Asset Recovery Services >](#)



Simplify IT

Our most secure¹ and most manageable² commercial PCs make IT management a breeze

World's Most Secure Commercial PCs¹

According to Principled Technologies, no PC manufacturer offers the BIOS-level visibility Dell does.



SECURITY

Improve fleet-wide security with multiple layers of defense.

Reduce the attack surface and enhance long-term cyber resilience with [Dell Trusted Workspace >](#)



Be secure from first boot with enhanced supply chain assurance through **Dell SafeSupply Chain**.



Reduce exposure to classical and quantum threats with deep, BIOS-level visibility via **Dell SafeBIOS and Dell Trusted Device App**.



Store credentials in hardware away from malware that looks to steal them with **Dell SafeID**.



Layer on advanced threat protection from our partner ecosystem: **CrowdStrike • Absolute • Halcyon**



Shrink the IT-security gap with an integrated, AI-enabled solution

Explore hardware-assisted security with Dell, Intel & CrowdStrike.

[Learn More >](#)

MANAGEABILITY

Best-in-class PCs and peripherals management – only from Dell.

With **Dell Management Portal**, you can manage Dell PCs, over the cloud, in conjunction with Microsoft Intune. [Dell Management Portal >](#)

And with Dell Device Management Console, you can save time with centralized and secure peripherals management. [Dell Device Management Console >](#)

Update and secure your fleet of Dell devices, with one application – **Dell Client Device Manager**.

Dell Trusted Update Experience makes it simple to update endpoints with the latest BIOS and driver versions. Dell is the first Top 5 PC vendor to:



Publish³ a device drivers and downloads release schedule:

IT Admins can deploy fleet-wide device updates on a predictable timeline.

[Learn More >](#)



Dell has the industry's first:⁴

Partner Portal accessible in Microsoft Intune, with fleet-wide BIOS password access capability and Enterprise application access and publication capabilities

Binary Large Object (BLOB) package-based solution, for endpoint BIOS settings configuration, using Microsoft Intune

Hardware OEM systems management solution to integrate with Intel vPro

Simplify PC refresh with Dell Services

Enabling every step of the PC lifecycle

Dell APEX PC as a Service¹

Fully customizable monthly subscription that can include PCs, peripherals, software and services with no upfront investment.

APEX PC as a Service makes it easy to refresh to the latest PCs and seamlessly deploy, secure, manage, support and help with the retirement of devices.

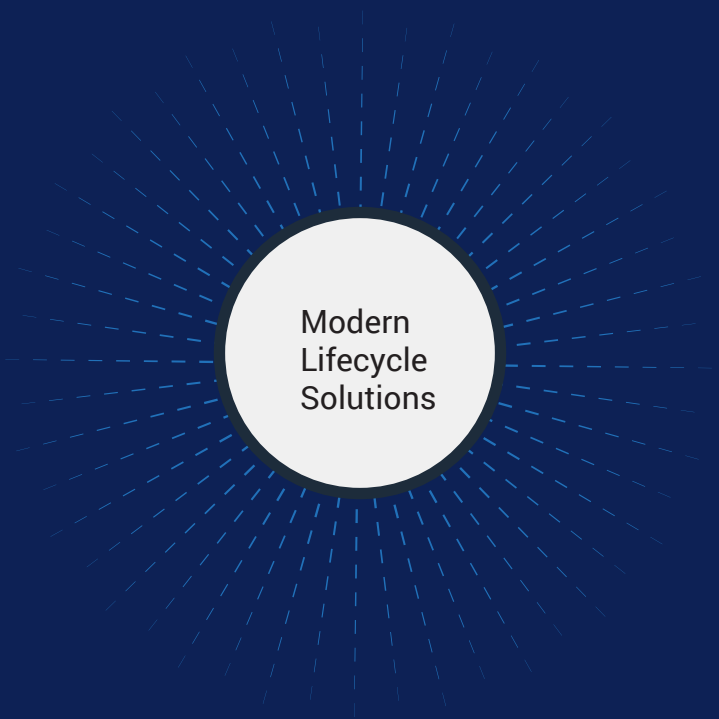
[Dell APEX PC as a Service \(PCAAS\) >](#)

ProDeploy Client Suite

PC refresh starts with getting new devices in the hands of your end-users. Dell ProDeploy Suite streamlines operations and increases productivity with configured PCs that are ready to use on day one with dynamic cloud-based provisioning and imaging.

When transitioning from old to new technology, ProDeploy Plus includes the ability to securely erase sensitive end-user data with sophisticated tools to sanitize devices and includes Asset Recovery Services for responsible retirement.

[Dell ProDeploy Client Suite >](#)



Modern Lifecycle Solutions

Dell Premier

324%

ROI over 3 years³

Modernize IT purchasing by shopping your catalog in a tailored online solution. Gain control over the entire IT ecosystem to cut costs, standardize ordering, access analytics and more.

[Dell Premier >](#)

Asset Recovery Services

2.8B

Pounds of electronics recovered through all recovery programs since 2007²

Let Dell help you securely and responsibly retire your old IT equipment - regardless of brand - to allow for a seamless transition from old to new technology, while protecting both your business and the planet.

[Asset Recovery Services >](#)

ProSupport Suite for PCs

ProSupport Suite is more than a 24/7 break-fix solution, it's a set of tools that automate and optimize your environment with little to no human intervention or end-user disruption.

Select from a robust library of Dell-authored scripts that correct company-wide issues quickly, minimizing remediation times and maintaining peak system performance. ProSupport Suite provides telemetry-driven data to arm IT with insights and make targeted updates, all controlled from a single dashboard.

[ProSupport Suite for PCs >](#)

CLAIMS

Page 16

1. Dell Pro Max: Based on internal analysis, December 2024. 50% post-consumer recycled plastic in the bezel, palmrest innerframe, 30% in the top cover, bottom cover and speaker housing 50% recycled cobalt in the 64whr, 72whr and 96whr batteries, 42% bio-based plastic bottom bumpers and 21% bio-based plastic in the top and bottom covers, 28% recycled ocean-bound plastic in the fan housing and 20% reclaimed carbon fiber in the top and bottom covers. Dell Pro Max Plus: Based on internal analysis, January 2025. 90% recycled magnesium in the top and bottom covers, 30% post-consumer recycled plastic in the palmrest and SSD holder, 50% recycled cobalt in the battery (72 whr) and 46% bio-based plastic bottom bumpers. Dell Pro Max Premium: Based on internal analysis, January 2025. Recycled cobalt applies to the 72whr battery. 30% post-consumer recycled plastic in the speaker housing and 98% post-consumer recycled plastic in the battery frame, 90% recycled magnesium in the bottom cover, recycled and low emissions aluminum in the top cover and palmrest and 50% recycled cobalt in the battery.
2. Based on internal analysis, February 2025. Percentage is based on system plastic weight. Up to 47% post-consumer recycled plastic and 11% closed loop ITE derived plastic. 13% recycled ocean bound plastic in the fan-housing of the Dell Pro Max Micro and Tower desktops.
3. Based on internal analysis, February 2025. Recycled copper applies to the cable of the 280W GaN adapter.
4. Applies to Dell Pro Max Plus 16 and Dell Pro Max Plus 18 notebooks launching in 2025. Based on internal comparison of the solder connection on Precision 7680 and Precision 7780 vs screwed connection testing data of the Dell Pro Max Plus laptops subject to a standard repeated axial load and a standard wrenching torque in multiple directions. New USB-C port design is as screwed on connection for easier repairs and improved durability. Read warranty information for USB-C port replacement instructions.
5. Based on internal analysis, November 2024. applies TO the DELL Pro Max Premium workstation.
6. Desktop packaging contains up to 56.7% recycled content and up to 57.9% renewable materials. Workstation packaging contains up to 93.9% recycled content and up to 7.1% renewable materials. Renewable materials in the form of sustainably forested materials. Percentages may vary slightly by region[and formfactor]. Excludes optional items added to order and included
7. Excludes Dell Pro Max Tower. Based on internal analysis, February 2025.
8. Based on internal analysis, December 2024. EPEAT registered where applicable. EPEAT registration varies by country. See www.epeat.net for registration status by country

Page 17

1. Based on Dell internal analysis, October 2024. Applicable to PCs on Intel processors. Not all features available with all PCs. Additional purchase required for some features. Validated by Principled Technologies. [A comparison of security features](#), April 2024.
2. Dell publishes a device drivers and downloads release schedule. Source: Source: Based on internal analysis, May 2023. When comparing publicly available device drivers and downloads release schedules published by the Top 5 PC vendors, as of May 2023.
3. Dell performs integrated validation of all driver and BIOS modules in an update. Source: Based on Dell internal analysis, May 2023, of integrated validation approaches of Top 5 PC vendors, for driver and BIOS modules in an update, by currently shipping and future-state product system images.
4. Capabilities of Dell Update Processes, Dell Management Portal and Dell Manageability Solutions capabilities and integrations with 3rd Party Management Solutions, with competitor update processes, partner portal capabilities in Microsoft Intune systems management solution capabilities and integrations with 3rd party management solutions. 3rd Party Management Solutions - Microsoft Intune, Workspace ONE, are separate purchases. Intel vPro, to support out-of-band systems management, is an additional system configuration upgrade; and Dell has the industry's first:
 - a. Based on Dell internal analysis - October 2024. Based on Dell Management Portal capabilities in Microsoft Intune compared to competitor Partner Portal capabilities in Microsoft Intune.
 - b. Dell Command | Endpoint Configure for Microsoft Intune - the industry's first Binary Large Object (BLOB) package-based solution, for securely configuring & managing endpoints, using Microsoft Intune. Disclaimer: Industry's first device manageability solution to use a Binary Large Object (BLOB) package, recognized by Microsoft Intune, for secure endpoint configuration and management.
 - c. Dell Command | Intel vPro Out of Band- the industry's first hardware OEM systems management solution to integrate with Intel vPro - for remote management of systems, regardless of power-state. Disclaimer: Based on Dell internal analysis, November 2023.
5. Dell Client Device Manager application availability planned for March 2025.

Page No 19

1. Based on third-party analysis by [Principled Technologies](#) when comparing Dell commercial AI PCs on Intel processors vs. HP and Lenovo, July 2025. Backed by Dell internal analysis of worldwide PC market, October 2025. Applicable to PCs on Intel processors. Not all features available with all PCs. Additional purchase required for some features.
2. Based on Dell internal analysis, January 2025. Most-manageable commercial PCs when comparing the systems management capabilities of Dell Update Processes, Dell Manageability Solution capabilities and integrations with 3rd Party Management Solutions, with competitor update processes, systems management solution capabilities and integrations with 3rd party management solutions. 3rd Party Management Solution - Microsoft Intune, is a separate purchase.
3. Dell publishes a device drivers and downloads release schedule. Source: Based on internal analysis, May 2023. When comparing publicly available device drivers and downloads release schedules published by the Top 5 PC vendors, as of May 2023.
4. Capabilities of Dell Update Processes, Dell Management Portal and Dell Manageability Solutions capabilities and integrations with 3rd Party Management Solutions, with competitor update processes, partner portal capabilities in Microsoft Intune systems management solution capabilities and integrations with 3rd party management solutions. 3rd Party Management Solutions - Microsoft Intune, Workspace ONE, are separate purchases. Intel vPro, to support out-of-band systems management, is an additional system configuration upgrade; and Dell has the industry's first:
 - a. Based on Dell internal analysis - October 2024. Based on Dell Management Portal capabilities in Microsoft Intune compared to competitor Partner Portal capabilities in Microsoft Intune. Dell Command | Endpoint Configure for Microsoft Intune - the industry's first Binary Large Object (BLOB) package-based solution, for securely configuring & managing endpoints, using Microsoft Intune. Disclaimer: Industry's first device manageability solution to use a Binary Large Object (BLOB) package, recognized by Microsoft Intune, for secure endpoint configuration and management.
 - b. Dell Command | Intel vPro Out of Band- the industry's first hardware OEM systems management solution to integrate with Intel vPro - for remote management of systems, regardless of power-state. Disclaimer: Based on Dell internal analysis, November 2023.
 - c. Dell Command | Intel vPro Out of Band- the industry's first hardware OEM systems management solution to integrate with Intel vPro - for remote management of systems, regardless of power-state. Disclaimer: Based on Dell internal analysis, November 2023.

Based on Dell Management Portal capabilities in Microsoft Intune compared to competitor Partner Portal capabilities in Microsoft Intune.

Page No 20

1. Payment solutions provided and serviced by Dell Financial Services L.L.C. or its affiliate or designee ("DFS") for qualified customers. Offers may not be available or may vary in certain countries. Where available offers may be changed without notice and are subject to product availability, applicable law, credit approval, documentation provided by and acceptable to DFS and may be subject to minimum transaction size. Offers not available for personal, family or household use. Dell Technologies and the Dell Technologies logo are trademarks of Dell Inc. Restrictions and additional requirements may apply to transactions with governmental or public entities. At the end of the contract, the customer may renew the contract or return the equipment to DFS.
2. Dell Technologies has recovered 2.8 billion pounds of electronics since 2007. Source: Based on Dell internal analysis of publicly available data, April 2023.
3. Based on a Forrester Total Economic Impact™ Study Commissioned by Dell Technologies and AMD, "The Total Economic Impact™ Of Dell Premier," February 2024. Full study: The Total Economic Impact™ of Dell Premier.