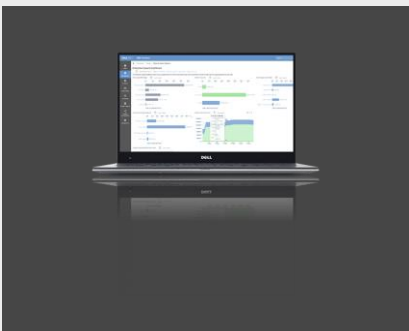


# Dell Storage Resource Manager (SRM)

Visualize, analyze and optimize your storage environment

## Essentials

SRM accurately provides chargeback for storage, hosts, hypervisors, and virtual machines based on SLAs.



Chargeback is available for block, file, object, and cloud storage.

Configuration compliance helps mitigate configuration errors for storage, SAN and hosts. You can even check to see if your environment complies with the Dell Support Matrix.

Multi-factor authentication is powered by RSA SecureID

## Control Costs

Rapid data growth combined with increased service level expectations introduces new management challenges for traditional storage environments. Dell Storage Resource Manager™ (SRM) is a comprehensive, storage monitoring and reporting solution that helps IT to visualize, analyze and optimize your end-to-end heterogeneous storage environments. SRM monitors inventory, capacity, performance, data protection and configuration details of storage along with the connected resources like hosts, SAN fabrics and applications to generate proactive alerts and useful reports through a single-pane-of-glass. SRM helps to manage today's storage investments while providing a management framework that supports investments in data storage. SRM now enables carbon footprint tracking with reports on device power consumption details, consumption trends and provides a future consumption forecast across many Dell storage arrays.

## Visualize

SRM was built to manage the complexity of growing, heavily virtualized storage environments. With SRM you obtain detailed relationship and topology views from the application to the virtual or physical host, down to the LUN to identify service dependencies. You can view performance trends across the data path and identify hosts competing for resources. SRM enables you to understand and manage the impact that storage has on your applications. With this improved insight, you can optimize storage resources to control the cost of rapid data growth.

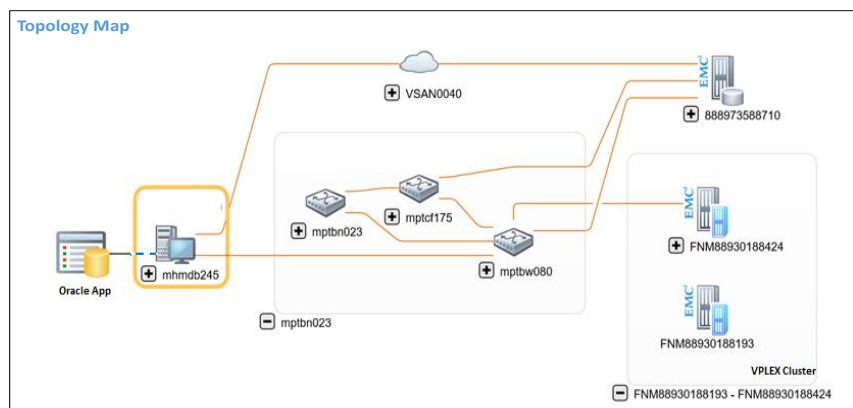


Figure 1: Visualize end to end topology and application to infrastructure mapping.

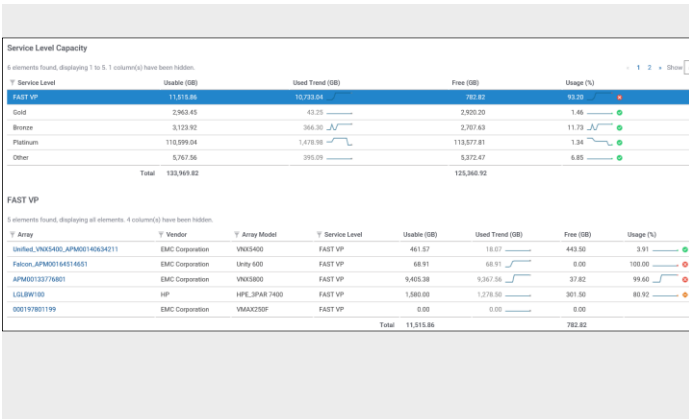


Figure 2: Analyze capacity usage by service level

**Analyze**

SRM helps you analyze health, configurations, and capacity growth. You can quickly spot SLA problems through custom dashboards and reports that meet the needs of a wide range of users and roles. With SRM you can also track block, file and object capacity consumption across your data centers with built in views to help you understand who is using capacity, how much they are using, and when more will be required.

You can continuously validate compliance with your design best practices and the Dell E-Lab Support Matrix to ensure your environment is always configured right to meet service level requirements. Also, SRM provides configuration change “what if?” analysis to proactively detect potential misconfigurations that could result from a configuration change.

**Optimize**

SRM helps you optimize capacity and improve productivity to get the most out of your investments in block, file, and object storage. It shows historical workloads and response times to determine if you have selected the right storage tier. SRM also helps you optimize the workload distribution to make sure there’s no contention and reduce performance impact.

SRM discovers all storage assets and gives you insights about where you can reclaim unused storage (LUNs with no IOPs, unmasked LUNs) or make greater use of provisioning to improve storage utilization.

Detailed capacity reporting and forecasting capabilities improves planning to enhance purchasing processes and reduce costs. With this information you can optimize your storage environment to improve your ROI.

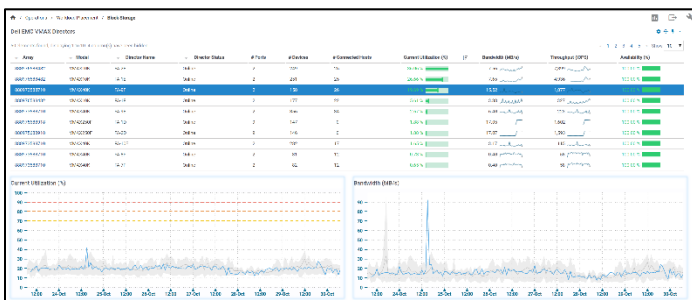


Figure 3: Optimize storage based on workload trends



[Learn more](#) about Dell Storage Resource Manager



[Contact](#) a Dell Technologies Expert



[View more](#) Dell storage resources



Join the conversation with [#DellTech](#)

© 2023 Dell Inc. or its subsidiaries. All Rights Reserved. Dell and other trademarks are trademarks of Dell Inc. or its subsidiaries. Other trademarks may be trademarks of their respective owners. H12350.11