

Dell PowerProtect Data Manager

A cyber resilient software platform for modern, multicloud workloads

MODERN

- **Unified Dashboard:** Provides a single, intuitive dashboard for visibility, control and efficiency.
- **AI Assistant:** Delivers contextual guidance, intelligent navigation and recommendations
- **Discover, Manage, Protect and Restore:** VMware, Hyper-V, Nutanix AHV, Kubernetes, databases, AI workloads, cloud-native workloads and file systems
- **Multicloud optimized:** Backup to cloud, backup in-cloud, long term retention and cloud disaster recovery
- **Software-defined:** Flexible deployment options
- **Superior VMware protection:** Transparent Snapshots delivers 5x faster backups¹ and 6x faster restores² with near-zero VM impact

SIMPLE

- **Autonomous operations:** Automated discovery and protection of databases, VMs, file systems and containers
- **Self-service with centralized governance:** Enable data owners from native interfaces while mitigating risk and assuring regulatory compliance
- **Monitoring and analytics:** Dell AIOps delivers AI-driven automation, predictive analytics and intelligent monitoring
- **Appliance:** Streamlined deployed, central managed in a single, open and integrated solution

RESILIENT

- **Intelligent threat detection:** ML-powered Anomaly Detection identifies suspicious activity with centralized investigation, including PowerStore integration
- **Cyber recovery:** Increase business resiliency to rapidly recover from cyber incidents
- **Efficient protection:** Maximize security, performance and scalability with PowerProtect Data Domain

Gain confidence your data is protected and available in an AI world

Organizations face mounting pressure to protect AI workloads and modern applications while defending against sophisticated cyber threats. As backup requirements shift to application and data owners, traditional IT-driven approaches are no longer sufficient.

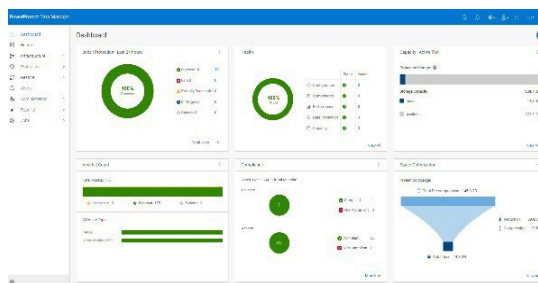
PowerProtect Data Manager addresses these challenges as a trusted and advanced cyber resilience platform. Dell Technologies offers cyber resilience software designed to secure traditional and modern workloads, providing more than just access to backups and restores, including:

- Advanced analysis and reuse for dev/test
- Cloud leverage to extend data center functionality
- Protection for cloud native applications
- Self-service backup and restore options from native applications
- Detection of anomalies to mitigate potential risk
- Centralized governance and control
- Enhanced business resiliency against cyber threats

Dell PowerProtect Data Manager leads the way by providing modern, simple and resilient cyber resilience, engineered for both traditional and modern workloads.

Experience modern cyber resilience

You can address these challenges by transitioning to a broader cloud cyber resilience strategy that modernizes your data center and unlocks the value of your data and applications for everyone.



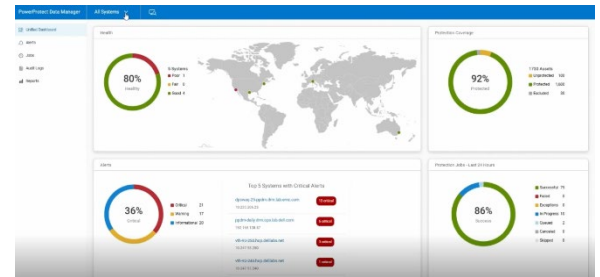
Data Manager gives you valuable insight into protected on-premises and in-cloud workloads, applications, file systems, and virtual machines (VMs). Plus, complete oversight and governance to ensure compliance.

Designed with operational simplicity and agility in mind, Data Manager works in tandem with PowerProtect Data Domain to secure traditional workloads and file systems as well as modern workloads, like Kubernetes and virtual environments. Restore data on-premises or in the cloud. With compliance at the forefront, Data Manager aligns with stringent service level objectives, ensuring your organization is protected against evolving cyber threats.

Unified Dashboard

The Unified Dashboard gives you a centralized view into your Data Manager environment that lets you monitor multiple PowerProtect Data Manager and Data Manager Appliance systems from a single intuitive interface. It consolidates key signals like job health, system status, capacity trends and risk posture so admins no longer have to jump between separate consoles.

By aggregating monitoring data across distributed environments, it reduces operational overhead, speeds troubleshooting and helps you spot trends and issues faster for better decisions. The Unified Dashboard is designed for scalable, enterprise-wide management.

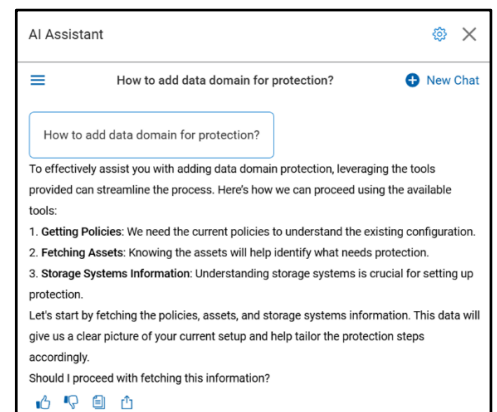


AI Assistant

The AI Assistant is an in-product, AI- powered guide that helps admins work faster and with more confidence. It provides contextual guidance for errors and alerts, explains likely root causes and recommends next steps so issues are resolved sooner with fewer support calls.

With intelligent navigation, it automatically steers users to the right pages and workflows in the UI, reducing clicks and guesswork. It also offers best-practice recommendations for policies, schedules, and configuration, helping teams set up protection correctly the first time and stay ready for audits.

Since it's trained on product documentation and knowledge base content, customers can accelerate time to value, improve operational efficiency, and reduce dependence on external support resources—all from within the Data Manager experience



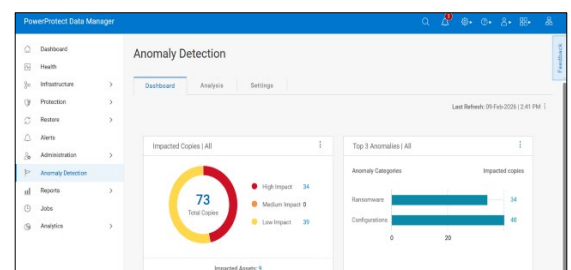
Autonomous operations with self-service flexibility

Automatically discover and protect databases, virtual machines (VMware vSphere, Microsoft Hyper-V, Nutanix AHV), file systems (Windows, Linux, NAS), AI workloads, cloud-native workloads across AWS, Azure and Google Cloud, and Kubernetes containers (including OpenShift Virtualization and VMware Tanzu) through a common policy engine that ensures compliance and governance across all workloads.

Empower data owners to perform self-service backup and restore operations from native applications while it maintains governance through Multisystem Reporting. Dell AIOps provides cloud-based monitoring with machine learning and predictive analytics, enabling proactive resolution and empowering both administrators and data owners to take action.

Secure your data with Anomaly Detection

Intelligently protect your data against cyber threats with Anomaly Detection. This feature offers early threat detection of unusual file activities after backups, providing immediate insights into potential security risks. Using advanced machine learning algorithms, Anomaly Detection reviews metadata, behavior patterns and system configurations to flag suspicious activity, helping to protect your production environment from ransomware and other threats. Anomaly Detection is lightweight and provides comprehensive monitoring at no additional cost. The dedicated landing page centralizes investigation with policy-level exclusions and actionable workflows for verification and false positive reporting, ensuring your backup data is secure and recoverable while maintaining operational consistency. Detection capabilities now identify anomalies in PowerStore snapshots, providing rapid insights into potential threats.

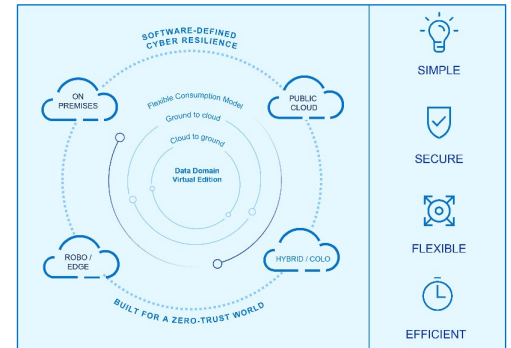


Multicloud optimized

Leverage the cloud for backup, long-term retention and disaster recovery. Whether you're focusing on private, public or hybrid clouds, you can be confident your data is protected at the level you need.

Data Manager extends protection to the cloud by tiering backups to cloud storage for long-term retention, minimizing costs while maximizing backup access. Archive to object support includes Wasabi-hosted Dell ObjectScale, Microsoft Azure for file systems and SQL Server, and AIX platform support. Data Manager protects in-cloud workloads running on AWS, Azure and Google Cloud, and enables disaster recovery to the public cloud with Data Domain Virtual Edition delivering high performance through deduplication.

PowerProtect Data Manager brings enterprise cyber resilience for VMware Tanzu and Hyper-V, both on-premises and in cloud, with WDAC support for secure Hyper-V environments and application-consistent protection.



Protect cloud-native workloads across multiple public clouds

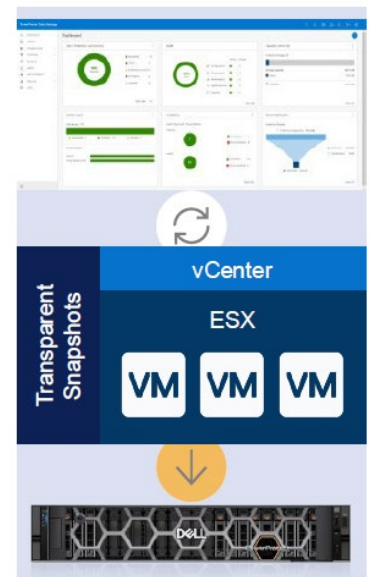
Mission and business-critical applications including Kubernetes containers (EKS, AKS, GKE), AI infrastructure and cloud-native workloads deployed in the public cloud require enterprise-grade protection methods. Unfortunately, the level of native cyber resilience available in public clouds isn't sufficient, consistent nor designed to reign in sprawl.

PowerProtect Data Manager discovers, orchestrates and automates protection for AWS, Azure and Google workloads via tag-based policies and REST APIs. It protects cloud-native workloads across multiple public clouds, providing global visibility and control. For Dell NativeEdge edge computing environments, Data Manager delivers industry-first co-engineered protection with image-level backup for KVM virtual machines.

Change how you protect VMware

Transparent Snapshots, a feature of Dell PowerProtect Data Manager, redefines how you protect VMware environments at scale. By automating VM image-level backups, it removes the need to pause VMs during the backup process, ensuring continuous availability without business disruption. Designed for simplicity and performance, Transparent Snapshots provides up to 5x faster backups¹, 6x faster restores², and reduces VM latency by up to 5x³.

This innovative approach eliminates proxies for data movement, reducing infrastructure costs and complexity while improving efficiency. It's storage agnostic, supports NFS and vSAN, and automatically scales with your VMware environment, making it ideal for large, fast-growing deployments. With Transparent Snapshots, you'll experience seamless backups, lower costs, and simplified management—all while reducing the risk of data loss. Modernize your VMware backup strategy today with Transparent Snapshots.



Optimized Dell Storage protection with Storage Direct Protection



PowerProtect Data Manager with Storage Direct Protection delivers fast backup and recovery for Dell PowerMax and PowerStore, with shorter RPOs through application-consistent snapshots. Centralized management with automatic discovery simplifies operations. Benefits include Instant Access, image-level restores, retention lock support and Transparent Snapshots for comprehensive protection of multiple storage clusters.

PowerProtect Data Manager Appliance

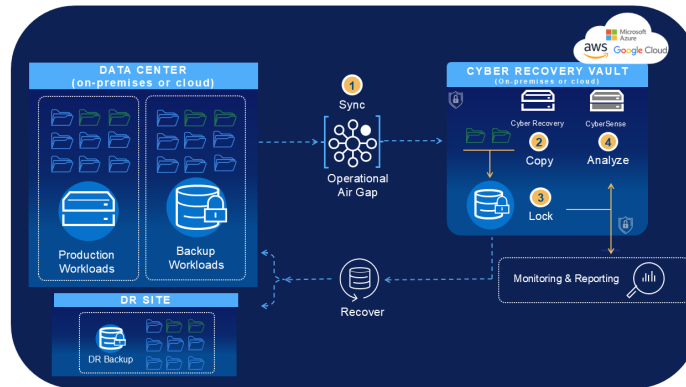
Deploy PowerProtect Data Manager through VMware virtual environments or direct RHEL and SLES Linux deployment, providing infrastructure flexibility while maintaining consistent cyber resilience capabilities. The new PowerProtect Data Manager Appliance is a software-defined solution that takes scalability, flexibility, and performance to the next level. The Data Manager Appliance is the best way to achieve cyber resilience with Dell PowerProtect. With a single, easy-to-manage interface, you get consistent backup and storage operations without the hassle all while reducing management overhead by 50%.⁴



Increase business resiliency with Cyber Recovery capabilities

Events once seen as extreme and unusual, are now common. This makes cyber resilience an even more important part of your business strategy. Your business needs to have the ability to anticipate, withstand, recover from and adapt to adverse conditions, stresses, attacks, or compromises on systems that use or are enabled by cyber resources.

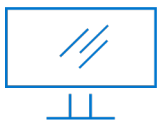
PowerProtect Cyber Recovery provides maximum control and security for data and infrastructure with layered protection to safeguard and recover critical systems from cyberattacks. Lock down your critical data, whether on-premises or in an easy-to-deploy public cloud, isolate it from threats in an air-gapped vault, and use machine learning to expose suspicious activity for clean, reliable data recovery.



With direct integration with PowerProtect Data Manager, you can automate your recovery and business continuity strategies to reduce business risk caused by cyberattacks and enhance your overall cyber resilience.

Take the next step

Experience the trusted cyber resilience platform. Contact your Dell sales representative or authorized reseller to learn more about how PowerProtect Data Manager can benefit your organization.



[Learn More](#) about PowerProtect Data Manager



[Contact](#) a Dell Technologies Expert

- ¹. When comparing PowerProtect Data Manager 19.19 with Transparent Snapshots backup performance to PowerProtect Data Manager 19.19 with VADP backup performance. Based on Dell internal analysis and testing, June 2025.
- ². When comparing PowerProtect Data Manager 19.19 with Transparent Snapshots restore performance to PowerProtect Data Manager 19.19 with VADP restore performance. Based on Dell internal analysis testing, June 2025.
- ³. When comparing PowerProtect Data Manager 19.19 with Transparent Snapshots VM latency performance to PowerProtect Data Manager 19.19 with VADP VM latency performance. Based on Dell internal analysis and testing, June 2025.
- ⁴. Based on Dell internal analysis, October 2025.