

# Doubling down on performance



Cloud RAN is a game-changer for Communication Service Providers (CSPs). By cloudifying radio access functions, you can reduce hardware and operational costs, increase scalability, enhance 5G performance, and power AI-driven optimization. The Dell PowerEdge XR8720t is optimized to deliver scalable, high-performance infrastructure for Cloud RAN and other next-gen mobile workloads, helping you lay the foundation for Open RAN and accelerate the deployment of new services.

## Converge all Cloud RAN workloads into a single server

Dell's unique multi-sled architecture delivers a complete RAN solution in one 2U platform, while competitors require multiple servers to meet production-scale requirements due to fundamental architectural limitations. The PowerEdge XR8720t extends the PowerEdge XR8000 family with the industry's first single-server solution for complete Cloud RAN and Open RAN DU deployments. With twice the port density and more than double processing cores of previous generations, the PowerEdge XR8720t changes the game on RAN performance. For the first time, you can access open compute resources that match the performance of traditional BBUs, delivering unmatched scalability through the latest generation Intel® Xeon® 6 SoC processors.

**2x** Port density (12 to 24)

**>2x** Processing cores (32 to 72)

**1/2** No. of servers needed at edge sites

Powered by Intel® Xeon® 6 SoC with 72 cores

1400W dual-input PSUs



## Extreme flexibility & serviceability

The PowerEdge XR8720t simplifies maintenance and operations with its sled-based architecture and capabilities like front accessible I/O. This reduces downtime and operational costs for Telecom and Enterprise Edge workloads. It is also the first ruggedized single socket server to reach 24 SFP28 ports of fronthaul connectivity, an absolute must for Cloud RAN DU workloads. The PowerEdge XR8720t uses the same PowerEdge XR8000 chassis as previous generations, ensuring fast and easy installation. It comes in two configurations: one designed for maximum networking density and the other focused on flexibility.



**1st Edge Server** with Intel® Ethernet Network Adapter OCP3.0 E830-XXVDA8



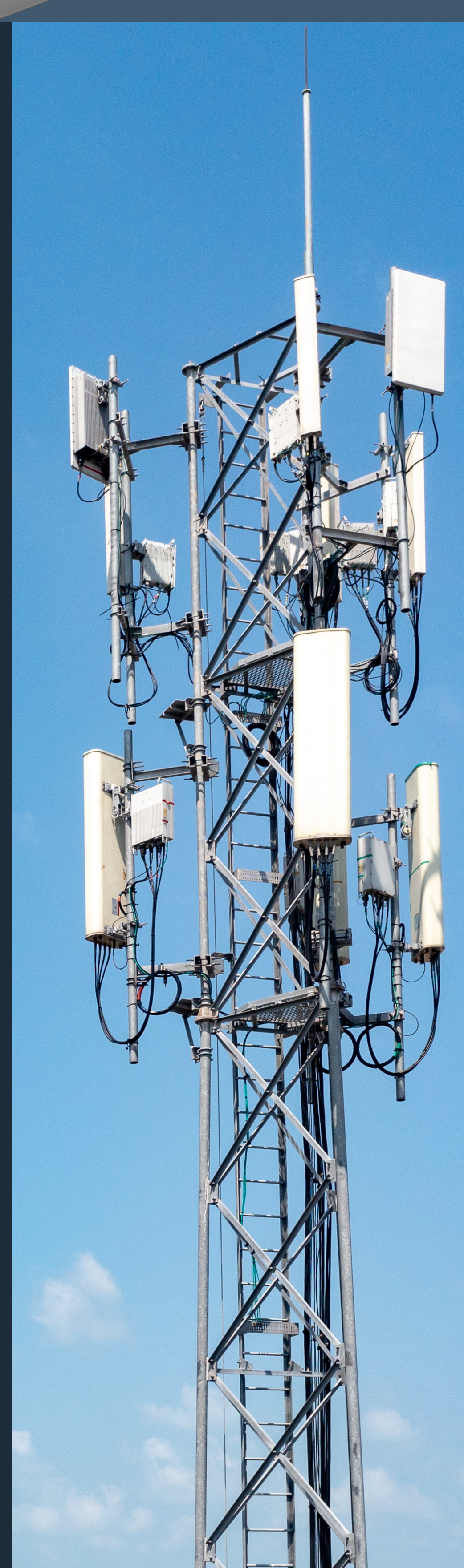
Hot-swappable modularity



**Front-accessible I/O** for simplified field serviceability



**+50%** expandability per server sled

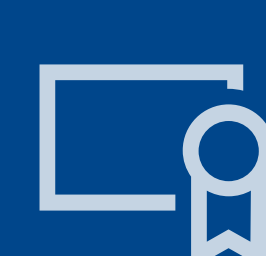


## Rugged reliability in challenging environments

Edge environments demand robust and reliable hardware. The PowerEdge XR8720t is certified for NEBS Level 3 and GR-3108 Class 1 compliance with operating ranges of -5°C to 55°C, making it ideal for deployment in harsh physical conditions and space-constrained locations.



**-5°C to 55°C**  
extreme temperature operating range



**NEBS Level 3**  
and **GR-3108**  
**Class 1** compliance



**430 mm depth**  
from front I/O wall to rear wall

## All your Cloud RAN and Open RAN needs in a single server sled

Interested in learning more about the PowerEdge XR8720t? Reach out to your Dell Technologies representative or visit [Dell.com/Telecom](https://dell.com/Telecom) for full details.

