

## ► EXPLORE

# Dell Trusted Workspace

## Secure anywhere-work

with hardware & software defenses built for today's cloud-based world.

Reduce the attack surface and stay ahead of modern threats with a comprehensive portfolio of hardware and software protections.

[Learn more about the portfolio →](#)

Dell secured the highest score  
on the IDC Enterprise PC  
Vendor Trust Perception Index



Source: IDC, The Enterprise PC Trust Perception Index, 2025: Measuring Customer Perception of Trustworthiness (in Security, Privacy, Compliance, and ESG) for Enterprise PC Vendors, Doc #US53220125, March 2025.

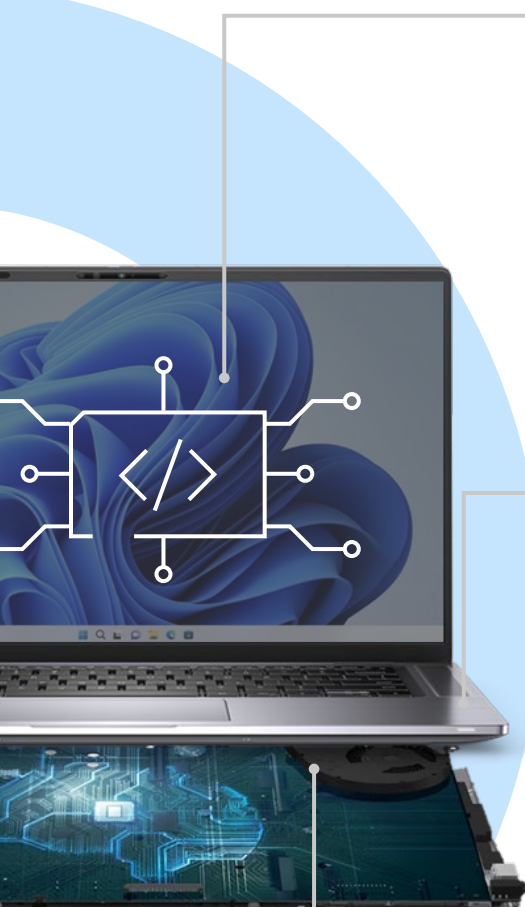


[The world's  
most secure  
commercial AI PCs<sup>1</sup> →](#)



[Software to improve  
the security of any  
fleet →](#)

# Multiple layers of defense



## Built-on **Software Security**

Layer on advanced threat protection with software from an expertly selected partner ecosystem. Take advantage of the benefits and efficiencies that come from consolidating security purchases.

## Built-in **Hardware & Firmware Security**

Prevent and detect foundational attacks with the world's most secure commercial AI PCs.<sup>1</sup> Deep defenses at the BIOS/firmware and hardware levels keep the device protected in-use.

Only Dell integrates PC telemetry with industry-leading software to improve fleet-wide security.<sup>1</sup>

## Built-with **Supply Chain Security**

Work confidently knowing your device is secure from first boot. Secure PC design, development and testing help reduce the risk of product vulnerabilities. Rigorous supply chain controls reduce the risk of product tampering.



Prevent, detect and respond to threats wherever they occur

**Dell SafeGuard and Response**

**Dell SafeData**



Stay protected from evolving threats

**Dell SafeBIOS**

**Dell SafeID**

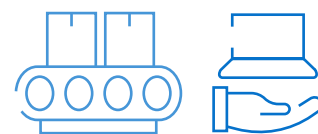


Trust hardware is tamper-free on delivery

**Dell SafeSupply Chain**

**Dell Trusted Workspace** Built-with & Built-in Security

# World's most secure commercial AI PCs<sup>1</sup>



## Be secure from first boot

Rigorous, state-of-the-art supply chain controls and optional add-ons, like Dell-unique **Secured Component Verification**, provide assurance of PC integrity. [Learn more](#) →

## Verify firmware integrity

Dell-exclusive **firmware verification** (hardware-based security found in Intel processors) protects against unauthorized access to and tampering of highly privileged firmware. [Learn more](#) →

## Secure end user credentials

Verify user access with Dell-unique **SafelD**, a dedicated security chip that keeps user credentials hidden from malware. Now FIPS 140-3 Level 3 certified. [Learn more](#) →

## Maintain BIOS integrity

Catch and repel threats with Dell-unique **BIOS verification**. Assess a corrupt BIOS, repair it and gain insights that reduce exposure to future threats. [Learn more](#) →

## Spot ticking timebombs

**Indicators of Attack**, an early-alert feature offered only by Dell, scans for behavior-based threats before they can do damage. [Learn more](#) →

## Catch known vulnerabilities

Dell-unique **Common Vulnerabilities and Exposures (CVE) Detection and Remediation**<sup>2</sup> monitors for publicly reported BIOS security flaws and recommends updates to mitigate risk. [Learn more](#) →



*Industry Leadership Validated by Principled Technologies\**

## Shrink the IT-security gap with PC telemetry

Enrich software solutions with below-the-OS insights. Only Dell integrates PC telemetry with industry-leading software providers to improve fleet-wide security.<sup>1</sup> [Learn more](#) →

## Explore Dell Trusted Devices



[Laptops](#) →



[Desktops](#) →



[Workstations](#) →

\*Study results available for Intel-based devices only.

Copyright © Dell Inc. All Rights Reserved.

**DELL**Technologies

**Dell Trusted Workspace** Built-on security

# Software to improve the security of any fleet



## Thwart advanced cyberattacks with **Dell SafeGuard and Response**

Prevent, detect and respond to threats wherever they occur. Artificial intelligence and machine learning proactively detect and block endpoint attacks, while security experts help hunt for and remediate identified threats across the endpoint, network and cloud.

### Partner

[\*\*CrowdStrike Falcon®\*\* →](#)

## Protect data on the device and in the cloud with **Dell SafeData**

Enable users to collaborate safely from anywhere. Netskope takes a datacentric approach to cloud security and access, protecting data and users everywhere, while Absolute gives IT visibility, protection and persistence outside the corporate firewall.

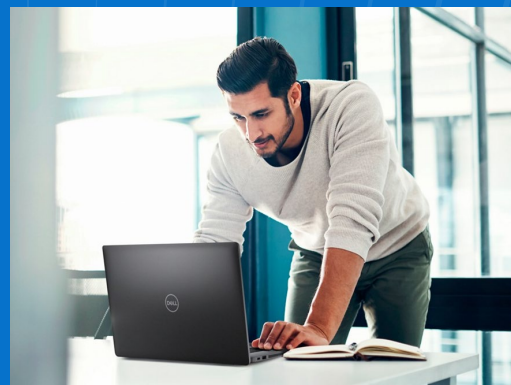
### Partner

Self-healing for endpoints, apps & networks with  
[\*\*Absolute\*\* →](#)

## Explore Dell Security Services

With Dell, customers can self-manage security or have specialists manage it for them. Engage our fully-managed, 360° SecOps solution designed to prevent, respond and recover from security threats in the IT environment.

[Learn more about  
Managed Detection and  
Response Pro Plus →](#)



## Dell Trusted Workspace Hardware-assisted security

# Integrated security

Evolving cyber threats circumvent software-only defenses. Help shrink the attack surface of endpoints with **hardware-assisted protections**.

To protect against modern threats, hardware and software defenses must work together. That's where Dell can help. We work with industry-leading security partners, combining rich, device-level telemetry with cutting-edge threat detection to improve the security of your fleet.

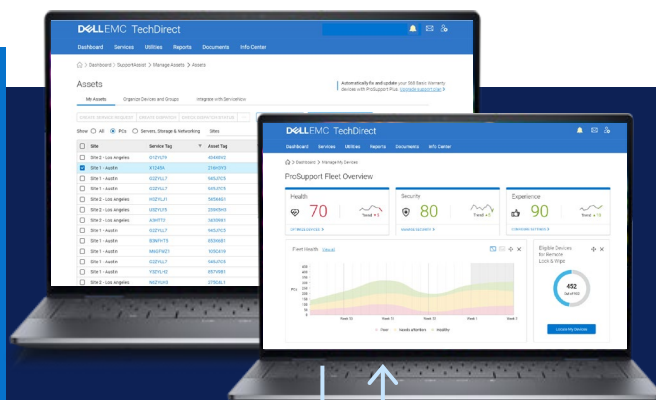
- ✓ Reduce the attack surface
- ✓ Improve threat detection

- ✓ Maintain device trust
- ✓ Consolidate providers

### Built-on Software Security

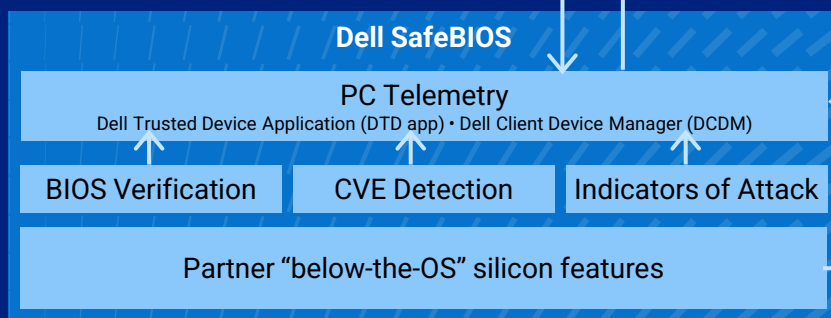
THE OS

Only Dell  
integrates PC  
telemetry with  
industry-leading  
software to  
improve fleet-  
wide security<sup>1 3</sup>



### Built-in Hardware & Firmware Security

World's most secure commercial AI PCs<sup>1</sup>



### Built-with Supply Chain Security





# Secure anywhere- work with **Dell Trusted Workspace.**



Built-with & Built-in  
Hardware Security



Built-on Software  
Security

Reduce the attack  
surface and  
improve long-term  
cyber resilience  
with multiple layers  
of defense.

Visit us

[dell.com/endpoint-security](https://dell.com/endpoint-security)

Contact us

[global.security.sales@dell.com](mailto:global.security.sales@dell.com)

Read more

[Endpoint Security Blogs →](#)

Join the conversation

[LinkedIn /delltechnologies](#)

[X @delltech](#)

## Sources and disclaimers

<sup>1</sup>Based on Dell internal analysis, October 2024 (Intel) and March 2025 (AMD). Applicable to PCs on Intel and AMD processors. Not all features available with all PCs. Additional purchase required for some features. Intel-based PCs validated by Principled Technologies. A comparison of security features, April 2024. <sup>2</sup>Dell Client Device Manager's Security Module includes automated CVE remediation for BIOS and firmware-level flaws for managed environments. For unmanaged environments still using the DTD App, all of the existing features, including CVE Detection for the BIOS is available. (Note: CVE Detection for Firmware is available when Dell Command | Update is installed.)

<sup>3</sup>Integrations available for CrowdStrike Falcon Insight XDR and Absolute. <sup>4</sup>Availability varies by region.