



Dell PowerSwitch E3200-ON Series

High performance open networking 1GbE and 10GbE Multigigabit switches for modern workloads at the network edge

The E3200 switch series offers power-efficient and resilient 1GbE and 1/2.5/5/10GbE Multigigabit range of switching solution for advanced Layer 3 distribution for large enterprise offices, branches and edge networks. The series has high-performance capabilities and wire-speed performance utilizing a non-blocking architecture to easily handle unexpected traffic loads. Use dual internal hot-swappable 80PLUS Platinum certified power supplies for high availability and power efficiency. These switches offer simple management and scalability.

Modernize edge networking

Modernize your network edge with a power-efficient and resilient 1/2.5/5/10GbE switching solution with dense options of 802.3at (30W) or 802.3bt (60W/90W) PoE solutions to deliver clean power to wide range network devices such as wireless access points (APs), Voice-over-IP (VoIP) handsets, video conferencing systems, security cameras, LED luminaires and many more.

Achieve high availability and full bandwidth utilization with Multichassis Link Aggregation (MLAG)*. E3200 series switches support MLAG to create active/active loop-free redundancy without spanning tree. Server rooms can deliver reliable server and storage connectivity with features to help save time and avoid configuration errors. E3200 supports VRF-lite*, allowing it to be partitioned into multiple virtual routers with isolated control and data planes on the same physical switch. For greater interoperability in multivendor networks, E3200 switches offer the latest open-standard protocols.

Leverage familiar tools and practices

E3200 series 48-port PoE models support Enterprise SONiC Distribution by Dell Technologies, an innovative, scalable open source network operating system designed for large-scale data center fabrics with enterprise-grade management features and 24/7 global support. E3224 SFP model supports Dell SmartFabric OS10, designed for easier deployment, greater interoperability and a lower learning curve for network administrators.

Deploy with confidence at any scale

E3200 series switches help create performance assurance with a data rate up to 1560Gbps (full duplex) and a forwarding rate up to 2167Mpps. Uplink easily with built-in rear high capacity ports.

* Network operating system specific. For details, refer to [Dell SmartFabric OS10](#) and [Enterprise SONiC Distribution by Dell Technologies](#) spec sheets

Hardware, performance and efficiency

- E3224F-ON: 1RU OS10 switch with 24 line-rate 1GbE ports of fiber, four integrated 10GbE SFP+ ports and 2 integrated 100GbE QSFP28 ports (available in Americas only)
- E3248P-ON: 1RU SONiC switch with 48 line-rate 1GbE copper ports with 802.3at (30W) PoE, four integrated 10GbE SFP+ ports and 2 integrated 100GbE QSFP28 ports
- E3248PXE-ON: 1RU SONiC switch with 48 line-rate 1G/2.5G/5G/10GbE copper ports with 802.3bt (90W) PoE, four integrated 25GbE SFP28 ports and 2 integrated 100GbE QSFP28 ports
- Available with dual 80 PLUS Platinum certified hot swappable internal power supplies. Optional external power supply to extend PoE budgets on specific models.
- Variable speed fan operation helps decrease cooling and power costs.
- Energy-Efficient Ethernet** and lower power PHYs reduce power to inactive ports and idle links, providing energy savings from the power cord to the port.
- Dell Fresh Air compliance for operation in environments up to 113°F (45°C) reduces cooling costs.

Deploying, configuring and managing***

- USB auto-configuration rapidly deploys the switch without complex TFTP configurations or sending technical staff to remote offices.
- Management via an intuitive and familiar CLI, SNMP-based management console application (including Dell OpenManage Network Manager), Telnet or serial connection.
- Private VLAN extensions and Private VLAN Edge support.
- AAA authorization, TACACS+ accounting and RADIUS support for comprehensive secure access support.
- Authentication tiering allows network administrators to tier port authentication methods such as 802.1x, MAC Authentication Bypass and Captive Portal in priority order so that a single port can provide flexible access and security.
- Achieve high availability and full bandwidth utilization with MLAG and support firmware upgrades without taking the network offline.
- Layer 3 Advanced IPv4 and IPv6 functionality including BGP, VRF, BFD, PIM-SM/DM/SSM, IGMP/MLD, RIPv1/v2, OSPFv2/v3
- VXLAN support

** Not supported by [Enterprise SONiC Distribution by Dell Technologies](#)

*** Network operating system specific. For details, refer to [Dell SmartFabric OS10](#) and [Enterprise SONiC Distribution by Dell Technologies](#) spec sheets

Product	Description
E3200 series	<p>Enterprise SONiC Distribution by Dell Technologies options</p> <ul style="list-style-type: none"> E3248P-ON IO/PS Airflow: 48x RJ45 10/100/1000Mb 802.3at (up to 30W) PoE auto-sensing ports, 4x 10G SFP+ ports, 2x 100G QSFP28 ports, 1x 1050W AC PSU included E3248PXE-ON IO/PS Airflow: 48x RJ45 10M/100M/1G/2.5G/5G/10G 802.3bt (up to 90W) PoE auto-sensing ports; 4x 25G SFP28 ports, 2x 100G QSFP28 ports, 1x 1600W AC PSU included <p>OS10 option</p> <ul style="list-style-type: none"> E3224F-ON IO/PS Airflow, 24x 1G SFP, 4x 10G SFP+ ports, 2x 100G QSFP28 ports, 1x 550W AC PSU included
Power cords	C13 to NEMA 5-15, 3M C13 to C14, 2M
Power shelves (optional)	<ul style="list-style-type: none"> MPS-1S Shelf, External power shelf to hold 1 PSU (any of 1050W AC, 1600W AC, 2000W AC, 1300W DC), Extends PoE budget for E3248P-ON, E3248PXE-ON ³ MPS-3S Shelf, External power shelf to hold up to 3 PSUs (any combination of 1050W AC or 1600W AC or 2000W AC PSUs, or up to three 1300W DC PSUs), Extends PoE budget for E3248P-ON, E3248PXE-ON ³
Power supplies (optional)	<ul style="list-style-type: none"> 550W AC hot swappable 80 PLUS Platinum certified with IO/PS airflow, adds redundancy to E3224F-ON 550W DC hot swappable 80 PLUS Platinum certified with IO/PS airflow, add 2 for redundancy on E3224F-ON 1050W AC hot swappable, adds redundancy and/or extends PoE budget for E3248P-ON. Also used with MPS-1S shelf, MPS-3S Shelf 1600W AC hot swappable, adds redundancy and/or extends PoE budget for E3248PXE-ON. Also used with MPS-1S shelf, MPS-3S Shelf
Optics, Cables and Cable Management	Please refer to Dell Networking Transceivers and Cables spec sheet for complete list of optics and cables
Fans (spare)	Fan module, IO to PSU Airflow

Technical specifications

Hardware specifications

Physical

2 integrated rear 100GbE QSFP28 ports Out-of-band management port (10/100/1000BASE-T)

USB (Type A) port for configuration via USB flash drive

MicroUSB (Type B) console port (MicroUSB to USB connector cable included)

RJ45 console port with RS232 signaling (RJ-45 to female DB-9 connector cable included) Auto-negotiation for speed and flow control Auto-MDI/MDIX, port mirroring

Flow-based port mirroring

Broadcast storm control

Energy-Efficient Ethernet per port settings**

Redundant variable speed fans

Air flow: I/O to power supply

Power supply:
Integrated 550W (E3224F-ON), 1050W (E3248P-ON), 1600W (E3248PXE-ON)

Dual firmware images on-board

Switching engine model: Store and forward

Chassis

Size (1RU, H x W x D):
1.71 in x 17.09 in x 15.75 in (power supply/ fan tray handle adds add'l 1.18 in)

Approximate weight (Switch with 1 PSU installed):
14.25lbs/6.46kg (E3224F-ON),
16.7lbs/7.57kg (E3248P-ON),
17.6lbs/7.98kg (E3248PXE-ON)

2-post rack mounting kit

Environmental

Power supply efficiency: 87% or better in all operating modes

Max. thermal output (BTU/hr):
785 (E3224F-ON),
6573 (E3248P-ON),
18487 (E3248PXE-ON)

Power consumption max (watts):
230 (E3224F-ON),
1683 (E3248P-ON),
4869 (E3248PXE-ON)

Operating temperature: 32° to 113°F (0° to 45°C)

Operating relative humidity: 95%

Storage temperature: -40° to 158°F (-40° to 70°C)

Storage relative humidity: 95%

Performance

CPU: 4-core

CPU memory: 8GB (E3224F-ON), 16GB (E3248P-ON, E3248PXE-ON)

SSD: 32GB

Packet buffer memory:
8MB (32MB for E3248PXE-ON)

Switch fabric capacity (full-duplex):
528Gbps (E3224F-ON),
576Gbps (E3248P-ON),
1560Gbps (E3248PXE-ON)

Forwarding rate:
733Mpps (E3224F-ON),
800Mpps (E3248P-ON),
2167Mpps (E3248PXE-ON)

Line-rate Layer 2 switching: All (non-blocking)

Line-rate Layer 3 routing: All (non-blocking)

Network Operating System specifications

For Network Operating System (NOS) specific features, refer to [Dell SmartFabric OS10 \(E3224\)](#) and [Enterprise SONiC Distribution by Dell Technologies \(E3248\)](#) spec sheets.

Regulatory compliance

TAA-compliant, Trade Agreements Act (19 U.S.C. & 2501-2581)

Safety and emissions

Australia/New Zealand: ACMA RCA Class A
Canada: ICES Class A; cUL
China: CCC Class A; NAL
Europe: CE Class A
Japan: VCCI Class A
USA: FCC Class A; NRTL UL; FDA 21 CFR 1040.10 and 1040.11
Eurasia Customs Union: EAC
Germany: GS mark
Product meets EMC and safety standards in many countries inclusive of USA, Canada, EU, Japan, China. For more country-specific regulatory information, and approvals, please see your Dell Technologies representative.

RoHS

Product meets RoHS compliance standards in many countries inclusive of USA, EU, China, and India. For more country-specific RoHS compliance information, please see your Dell Technologies representative.
EU WEEE
EU Battery Directive
REACH

Energy

Japan: JEL

Warranty

1 year return to depot constrained***

****See details at <http://www.dell.com/networkingwarranty>

IT Lifecycle Services for Networking

Experts, insights and ease

Our highly trained experts, with innovative tools and proven processes, help you transform your IT investments into strategic advantages.



Plan & Design

Let us analyze your multivendor environment and deliver a comprehensive report and action plan to build upon the existing network and improve performance.



Deploy & Integrate

Get new wired or wireless network technology installed and configured with ProDeploy. Reduce costs, save time, and get up and running fast.



Educate

Ensure your staff builds the right skills for long-term success. Get certified on Dell Networking technology and learn how to increase performance and optimize infrastructure.



Manage & Support

Gain access to technical experts and quickly resolve multivendor networking challenges with ProSupport. Spend less time resolving network issues and more time innovating.



Optimize

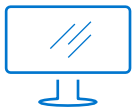
Maximize performance for dynamic IT environments with Dell Optimize. Benefit from in-depth predictive analysis, remote monitoring and a dedicated systems analyst for your network.



Retire

We can help you resell or retire excess hardware while meeting local regulatory guidelines and acting in an environmentally responsible way.

Learn more at DellTechnologies.com/Services



[Learn more](#) about Dell Networking solutions



[Contact](#) a Dell Technologies Expert



[View more](#) resources



Join the conversation with [@DellTech](#)