

# Dell thin client solutions with Windows 10 IoT Enterprise

Power, convenience, and familiarity of Windows® in a thin client optimized by Dell.

[Explore >](#)

eGuide – May 2023

**DELL** Technologies



# Why Dell Thin Client Solutions with Windows 10 IoT Enterprise LTSC 2021?



Windows 10 IoT Enterprise LTSC 2021 is a special edition provided by Microsoft for Embedded and IoT devices with a 10-year support lifecycle



[Continue >](#)



# Dell Thin Client Solutions

## with Windows 10 IoT Enterprise LTSC 2021

[Read brochure](#)[Go to Dell.com](#)[Play video](#)

### Optimized performance and collaboration

- + Greatest variety of **plug and play accessories and applications** such as a VPN client
- + **Local browser** to access cloud-hosted desktops, apps and services
- + Rich collaboration experience with unified communications for VDI optimization

### Best-in-class security

- + **Dell added-value software** provides unified write filter protection and lockdown features
- + Support for popular **multi-factor authentication** solutions

### Flexible management

- + **Effortless setup.** Suite of comprehensive and enhanced VDI protocols
- + **Hands-off management** with Wyse Management Suite
- + Use VMware Workspace ONE®<sup>1</sup> or Microsoft Endpoint Configuration Manager<sup>1</sup> to leverage existing investment

<sup>1</sup> – Not included, available from respective vendors

[Explore Use Cases >](#)



# Dell Thin Client Solutions with Windows 10 IoT Enterprise

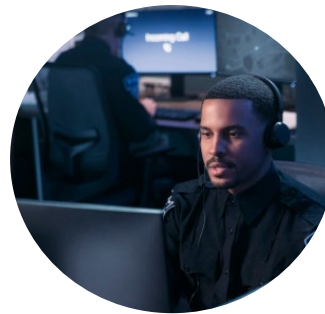
## Typical Use Cases



Manage a **mixed environment** of Windows PCs and thin clients **from a single console** such as Microsoft Endpoint Configuration Manager<sup>1</sup>



Ensure higher security and better performance with **early access to updates** from VDI providers and third-party solutions



Ensure a **rich collaboration experience** with support for unified communications VDI optimization, local collaboration apps and a broad selection of peripherals



Need a **local Edge browser** and support for **local applications** such as a VPN client or local Microsoft Teams client

[Explore Key Features>](#)

1 – Not included, available from respective vendors



# Built to Fit your Virtual Workspace

## Dell Thin Client Solutions

### with Windows 10 IoT Enterprise LTSC 2021



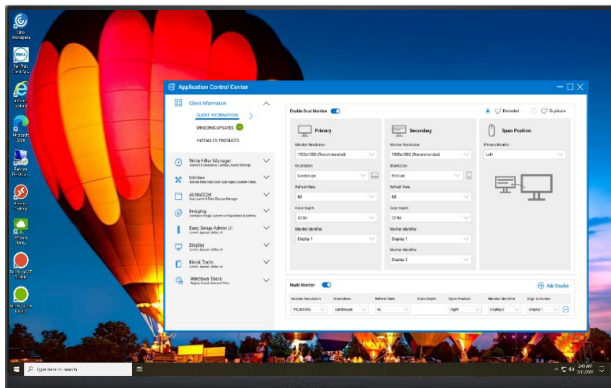
#### Tailored to your needs

The versatility and flexibility to access all types of virtual workspaces, cloud environments and a broad-range of eligible local Windows applications and peripherals.

#### Flexible management options

Take advantage of existing investment or choose Dell's exclusive Wyse Management Suite.

[Learn more >](#)



[Play video](#)

#### Rich collaboration experience

Support for VDI plugins locally enables high-quality media streams and delivers immediate benefits to the business with real-time communication and improved collaboration.

[Learn more >](#)

#### Ready for VDI

Built-in suite of comprehensive and enhanced clients for popular VDI environments.



# Collaborate more efficiently with optimized unified communications for VDI solutions



## 4 steps

to ensure the best possible collaboration user experience with Dell thin clients and unified communications optimization for VDI

1 Select a Dell thin client solution with Windows 10 IoT Enterprise LTSC 2021

2 Verify your VDI solution supports UC optimization for VDI

Citrix ICA HDX,  
VMware Blast Extreme

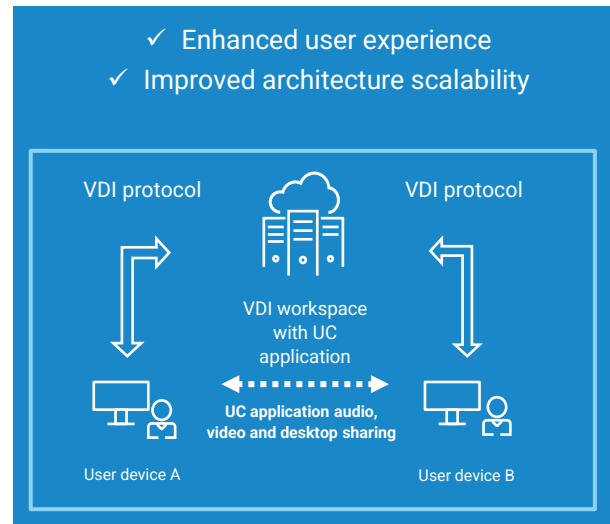
3 Verify your collaboration application supports optimization in VDI

4 Select the accessories to connect and collaborate more effectively and efficiently

Microsoft Teams	✓
Zoom Cloud Meetings	✓
Cisco Jabber Softphone	✓
Cisco Webex Meetings	✓
Cisco Webex Teams	✓

### Unified Communications optimization for VDI

- ✓ Enhanced user experience
- ✓ Improved architecture scalability





# Enterprise-class Security

## with Dell Thin Client Solutions and Windows 10 IoT Enterprise LTSC 2021



Protect local data, minimize risk and increase uptime with enhanced write filter protection and granular lockdown features.



- ✓ Support for TPM hardware encryption<sup>1</sup>
- ✓ Unified Extensible Firmware Interface (UEFI) supported
- ✓ BitLocker drive encryption
- ✓ Unified Write Filter
- ✓ Microsoft Defender for Endpoint
- ✓ Supports VMware Carbon Black (optional)<sup>2</sup>
- ✓ Single Sign-On (SSO)
- ✓ Support for popular multi-factor authentication solutions
- ✓ Support for Biometrics and Smart card readers
- ✓ Support for fiber optic networking with the OptiPlex 3000 Thin Client and optional SFP paired with a fiber transceiver

<sup>1</sup> - Requires support from the client device  
<sup>2</sup> - Not included, sold separately

[Explore Management Options >](#)



## Flexible management options

# Dell Thin Client Solutions with Windows 10 IoT Enterprise LTSC 2021

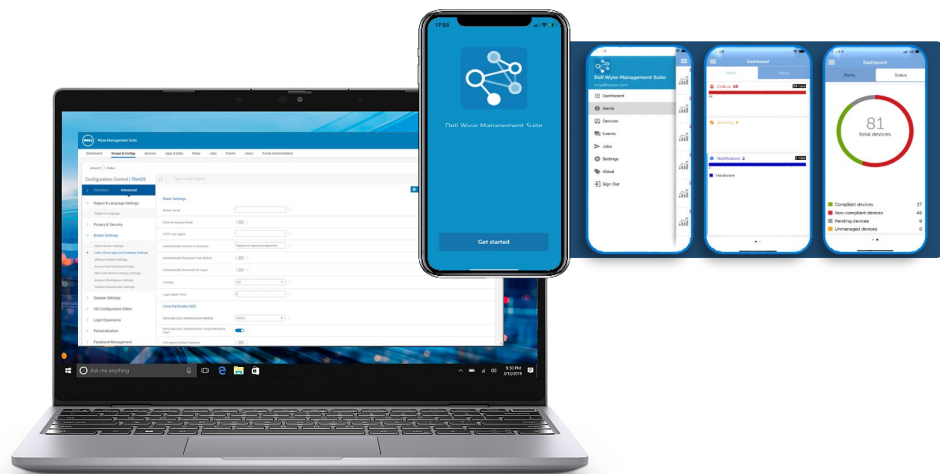


Take advantage of existing investment with support from VMware Workspace ONE®<sup>1</sup> for a unified digital workspace platform and Microsoft Endpoint Configuration Manager<sup>1</sup> or choose Dell's exclusive Wyse Management Suite.

**Wyse Management Suite** is a flexible, purpose-built, hybrid cloud solution designed to centrally configure, monitor and manage all of Dell's thin client solutions anytime and from anywhere.

And you can decide to either run it in your private cloud or enjoy the convenience of the Dell-managed public cloud or even use a combination of both.

Wyse Management Suite helps to simplify thin client's deployment and management with automated processes and intelligent insights to enable personalized experiences for your distributed workforce.



1 – Not included, available from respective vendors

[Explore Client Devices >](#)





# Dell Thin Client Solutions with Windows 10 IoT Enterprise



**Latitude 3440**  
(coming soon)

**OptiPlex All-in-One**  
(coming soon)

**OptiPlex 3000 Thin Client**

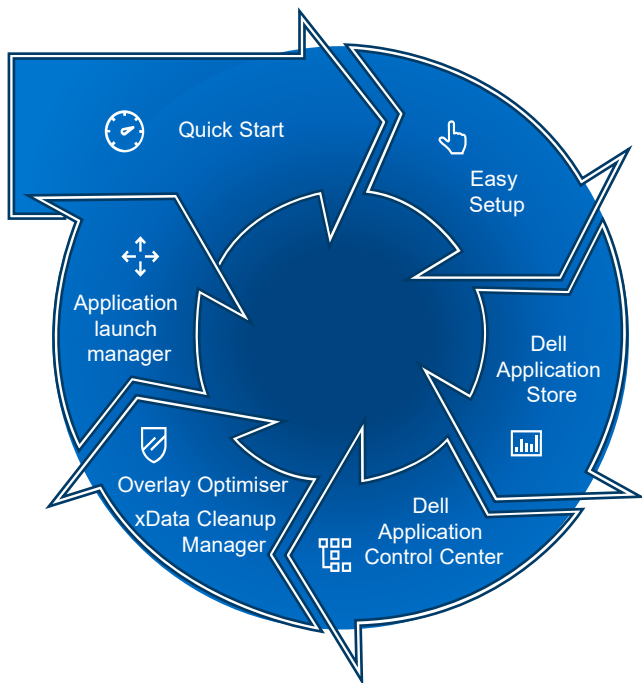
**OptiPlex Micro Form Factor**  
(coming soon)

**Latitude 5440**  
(coming soon)

\*Offering may vary by country and by configuration and operating system. Some items may be available after product introduction. At launch, Dell ThinOS (2303 or above) and Dell Hybrid Client (v2.0 or above) are customer install options sold separately and require the device to be configured with 8 GB Memory, 128 GB or higher capacity SSD/HDD and Ubuntu Linux 22.04 with Dell Client Agent Enabler (DCA-Enabler). OptiPlex All-in-One, Latitude 3440 and Latitude 5440 with Windows 10 IoT Enterprise LTSC2021 are coming soon



# Why Dell Thin Client Solutions with Windows 10 IoT Enterprise LTSC 2021?



**Improve user experience**



**Simplify management**



**Increase protection and performance**

[Continue >](#)



Productivity applications designed to make  
**Dell thin client solutions** easier to deploy and  
 adapt to your specific needs.



**Application Control Center**

- Client Information**  
Product Information, Windows updates, Installed Products

  - CLIENT INFORMATION
  - WINDOWS UPDATES
  - INSTALLED PRODUCTS >
- Write Filter Manager**  
Write Filter Dashboard, Commits & Exclusions

  - WRITE FILTER DASHBOARD
  - COMMITTS & EXCLUSIONS >
- Utilities**  
Tools, Custom Fields, ALM & xDCM

  - TOOLS
  - CUSTOM FIELDS
  - APPLICATION LAUNCH MANAGER
  - EXTRA DATA CLEANUP MANAGER >
- Imaging**  
Create a Golden Image

  - IMAGE SETTINGS >

### Intuitive interface

Control system configurations, embedded applications and utility tools including write filter through an intuitive, easy to navigate interface with Dell Application Control Center.



### All apps at your fingertips

Deploy partner components and client applications made available through quarterly releases from a convenient interface with Dell Application Store



☰
✕
**Dell Application Store**

Which application(s) do you want to install?

- VMware Horizon Client
- Zoom Plugin
- Dell Secure Client
  
- [Confirm](#) selection to continue

Export Configuration

Install

[Explore more resources >](#)



# More resources



## Learn more



[Read the brochure](#)



[Learn more on dell.com](#)



[Play video](#)

## Technical Resources



[Software Downloads](#)



[Technical documentation](#)