

# TOP REASONS TO DEPLOY POWERPATH

# 10

Intelligent and automated data path management and load balancing with support for NVMe/FC and NVMe/TCP

Dell PowerPath is host-based software that provides automated data path management and load-balancing capabilities for heterogeneous server, network and Dell storage deployed in physical and virtual environments. It enables you to meet your aggressive service levels with the highest application availability and performance, and with all the advantages of the industry's leading information storage systems. The Dell PowerPath family includes PowerPath Multi-pathing for physical environments including Windows and Linux, and PowerPath/VE Multi-pathing for VMware vSphere and Microsoft Hyper-V virtual.

## 1 | Automatically eliminate IO bottlenecks

PowerPath automatically eliminate I/O bottlenecks and application impact from I/O failures. This allows you to maintain scale-out mission-critical applications while ensuring availability and performance.

## 2 | Automate control over your dynamic virtual infrastructure

Automate multi-pathing policies for high availability within your virtual server environment and optimize load balancing for faster performance.

## 3 | Maintain the highest reliability for mission critical applications

By choosing PowerPath/VE for your all-flash arrays, you get the full benefit of all the quality enhancements from over nine years of development.

## 4 | Upgrade non-disruptively

Perform non-disruptive installs and upgrades via vCenter Update Manager.

## 5 | Standardize path management across the data center

Deploy PowerPath across physical and virtual and centrally monitor the entire environment via the PowerPath Management GUI.

# 10

## REASONS TO DEPLOY POWERPATH

### 6 | End-to-end data path monitoring

PowerPath offers data path monitoring across supported operating systems in physical and virtual environments.

### 7 | Convenient data migration capabilities without downtime

PowerPath Migration Enabler leverages PowerPath and Dell data mobility technologies to perform data migrations without application downtime.

### 8 | VMware and Microsoft Windows Admin (WAC) integration

For VMware deployments, PowerPath/VE is integrated with VMware vCenter Server and Update Manager as well as vSphere auto-deploy and stateless licensing capabilities to further simplify path management in a virtual environment.

PowerPath for Windows can be inserted into Windows Admin Center (WAC). WAC users have insight to PowerPath connected devices such as HBAs and Dell Storage arrays while utilizing a single GUI for path management.

### 9 | Comprehensive integration with Dell Converged Infrastructure

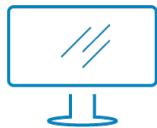
PowerPath/VE is a key component in Dell VxBlock infrastructure solutions-scalable platforms from Dell, Cisco and VMware for building solutions for virtual environments and cloud deployments.

### 10 | Quick start implementation services

In addition to custom PowerPath services to expand its features and functionality, Dell offers QuickStart implementation services for single-host and four-host implementations.

## Optimize data paths in your physical and virtual environments

PowerPath supports major operating systems including Linux and Microsoft Windows. PowerPath/VE supports Microsoft Hyper-V and VMware vSphere.



[Learn more](#) about Dell  
PowerPath



[Contact](#) a Dell Expert