



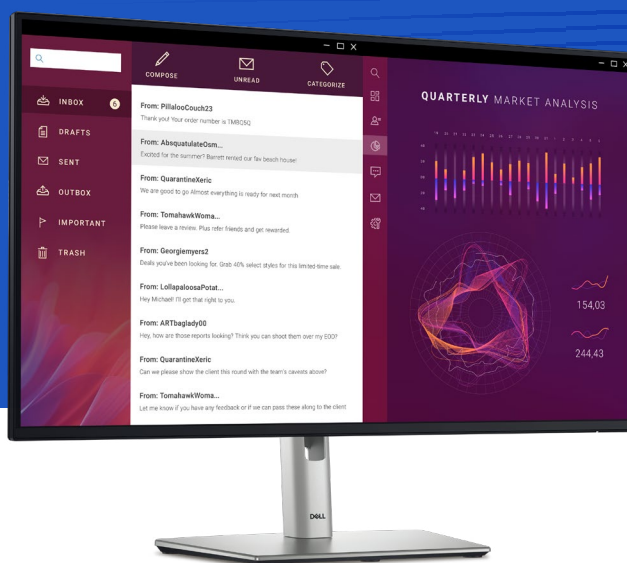
All-day productivity

Dell 27 USB-C Hub Monitor | P2725HE

The world's # 1 monitor company*

*Dell monitors are #1 Worldwide for 9 years! Source: IDC Worldwide Quarterly PC Monitor Tracker, Q3 2023. From 2014 to 2023.

4-star certified monitor for eye comfort¹



This 27-in FHD hub monitor offers enhanced visual comfort and offers up to 90W of power delivery.

Enhanced eye comfort

This monitor achieves TÜV Rheinland® 4-star eye comfort certification — the latest industry standard for eye comfort to help reduce signs of eye fatigue.

Benefit from improved ComfortView Plus, a built-in feature that reduces blue light emission to less than 35% while allowing you to see vibrant colors with 99% sRGB coverage, and 100Hz refresh rate that delivers smoother and sharper motion visuals.

Connect to productivity

Streamline your workspace with this USB-C® Hub monitor that wakes your laptop and delivers up to 90W of power.

With extensive connectivity options, including RJ45, you can get stable connection to the Ethernet and connect to a host of other devices — all in a clutter free setup.

See your work clearly

With In-Plane Switching (IPS) technology, this monitor offers a wide 178°/178° viewing angle, so you can view your work with consistent color and image quality from virtually any angle.

Get deeper blacks and brighter whites with 1500:1 contrast ratio.

¹ Based off TÜV Rheinland® eye comfort certification.



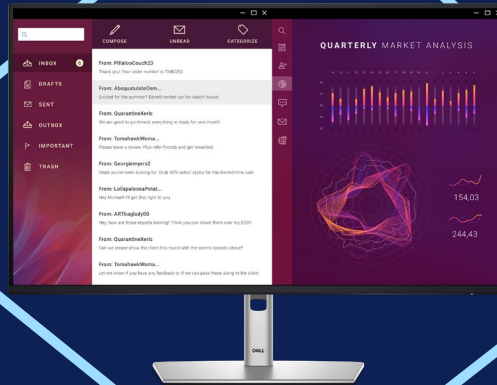
Enhanced eye comfort

Stay productive while ensuring eye comfort. The 100Hz refresh rate delivers smooth motion visuals, and improved ComfortView Plus reduces harmful low blue light emissions while allowing you to see vibrant colors with 99% sRGB coverage.



A better view from anywhere

See consistent images across wide viewing angles enabled by In-Plane Switching (IPS) technology and detailed images with 1500:1 contrast ratio on this FHD monitor.



Multitasking made easy

Boost efficiency with Dell Display Manager that lets you organize multiple apps on your screen. See more by Daisy Chaining a second monitor via DisplayPort connectivity.



Your connectivity hub

Reduce cable clutter with USB-C connectivity that transmits data and video while delivering up to 90W of power. Get stable Ethernet connection to your network with RJ45 that comes with PXE boot, MAC Address pass-thru¹ and Wake on LAN features. Connect your accessories via a wide variety of ports including a Quick Access USB-C downstream port that delivers up to 15W of power.

[Click here to explore more.](#)

World's number 1 monitor company*

We deliver world-class monitors that have gone through rigorous development processes and stringent tests to ensure dependable performance. Get peace of mind with unmatched warranty and support options. Being environmentally forward in thinking, our monitors adhere to environment standards and are made with sustainable materials.

* Dell monitors are #1 Worldwide for 9 years! Source: IDC Worldwide Quarterly PC Monitor Tracker, Q3 2023. From 2014 to 2023.
 1 MAC Address pass-through functionality is tested to work with most Dell PC systems. Functionality on non-Dell systems may vary.



Environmentally-forward thinking

Sustainable materials

Thoughtfully crafted with sustainable materials including 85% recycled plastics¹ with post-consumer recycled plastic and closed-loop ITE-derived plastic, 50% recycled steel², 100% recycled aluminum² and at least 20% recycled glass.³

Packaging innovation

Ships with reduced plastic⁴ and is in a box made with 100% renewable materials that is recyclable.⁵ Dell is shifting to a cushioning solution derived entirely from fiber that is kinder to the environment.

Elevated standards

Dell Technologies has the industry's widest portfolio of Display product types that have achieved the EPEAT Climate+ designation.⁶ This monitor meets highest environmental standards and registered EPEAT Gold with Climate+ designation – industry best practices for decarbonization.⁷

Energy conservation

Using PowerNap mode in Dell Display Manager lowers energy use by up to 14.8%.⁸

¹ Percentage is based on system plastic weight and may vary by model. 60% post-consumer recycled plastic, 25% closed loop ITE-derived plastic. ITE derived post-consumer recycled plastic: Materials that are derived from discarded products listed under IT and Telecommunications Equipment category in Annex II, Part 3 of EU Directive 2012/19/EU (the WEEE Directive)⁴⁰ and televisions. Based on internal analysis, January 2024.

² 100% recycled aluminum: Monitor stand. 50% recycled steel: Monitor chassis. Based on internal analysis, January 2024.

³ Applicable to all new monitors launching in CY 2024. Recycled glass is present in monitor panel. Based on internal analysis, January 2024.

⁴ Based on internal analysis, January 2024. Applies to all new P series and S series monitors launching in Cy2024. 22% average reduction in plastic use is based on the removal of EPE foam.

⁵ Applies to all Dell monitors launched since 2023. Made from FSC mix sources which is a mix of material from FSC certified forests, recycled content and/or FSC controlled wood. Based on internal analysis, August 2023.

⁶ Based on EPEAT Climate+ Designations achieved in all applicable countries. EPEAT registered where applicable. EPEAT registration varies by country. See www.epeat.net for registration status and tier levels by country. Data as available in October 2023.

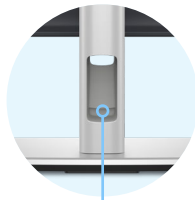
⁷ Based on internal analysis, November 2023. Based on EPEAT Climate+ Designations achieved in all applicable countries. EPEAT registered where applicable. EPEAT registration varies by country. See www.epeat.net for registration status and tier levels by country.

⁸ The calculation assumes the monitor is used for 10 hours a day, including 1.5 hours of idle time with display in sleep mode when the device screensaver is on. Based on internal analysis, May 2023.



All day comfort

Get a seamless viewing experience across dual screen setup with ultra-thin bezel design.



De-clutter your workspace

Free up your desk space with the small monitor base and hide cables from view by tucking them into the riser.



Easy-to-use

Navigate the onscreen menu and adjust settings with a convenient joystick control.

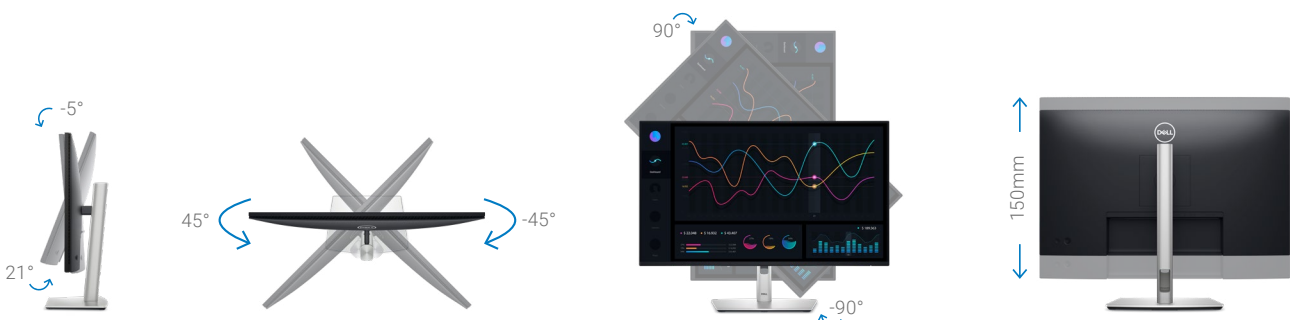


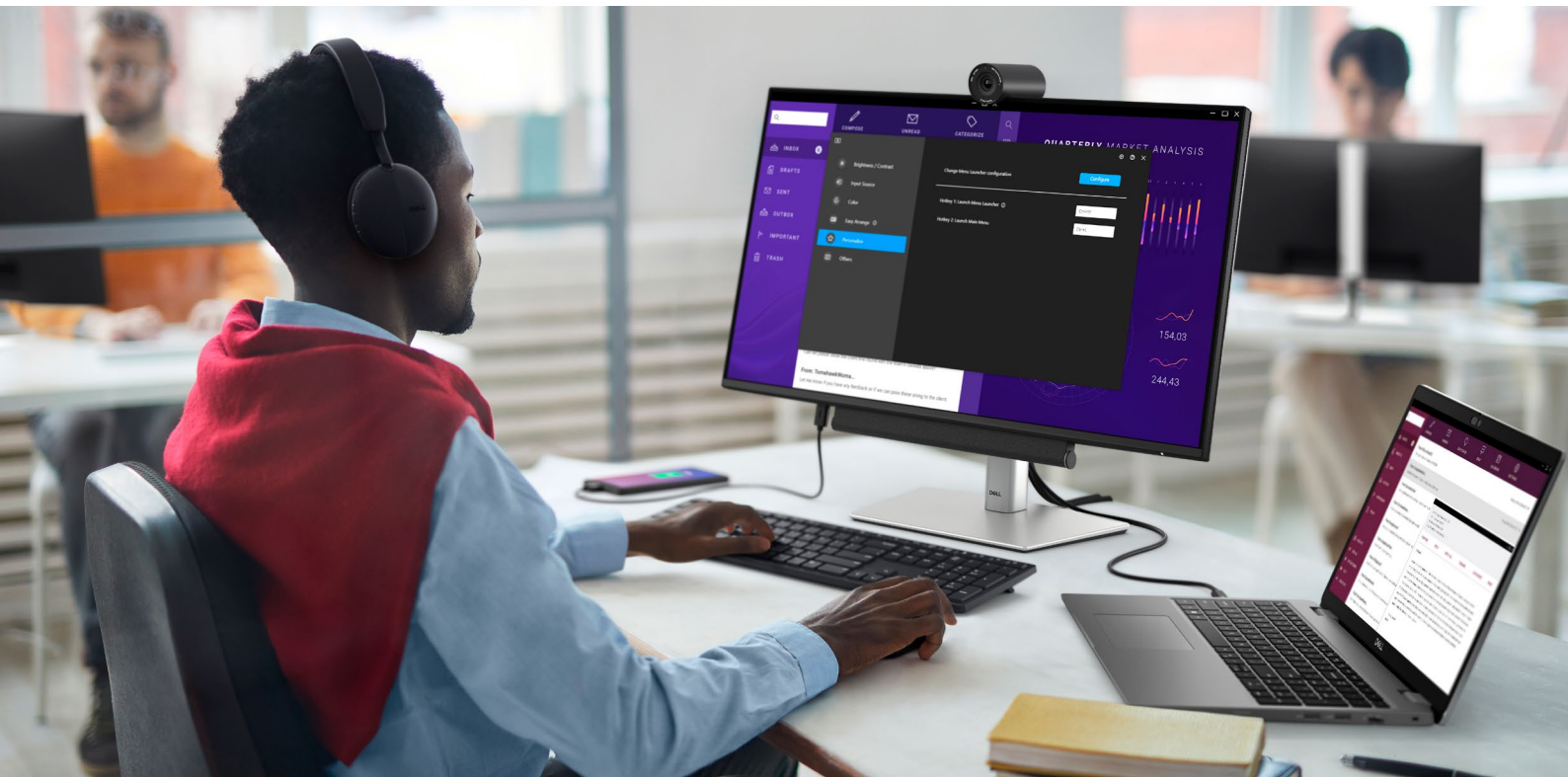
Quick access

USB-C downstream port enables fast data transfers and charging of up to 15W of power.

Work comfortably

Experience made-for-you comfort by tilting, swiveling, pivoting and adjusting the height of your monitor (150mm max).





Dell Display Manager

Boost efficiency with features that let you organize your screen, customize your monitor settings and simplify management.

Multitask efficiently

Organize your screen with Easy Arrange and save profiles with Easy Arrange Memory.

Easy management

Manage your fleet of monitors with remote management features that are automatic, comprehensive and compatible with several tools.¹

Customize to your convenience

Quickly access your favorite features and functions with the menu launcher and hot keys.

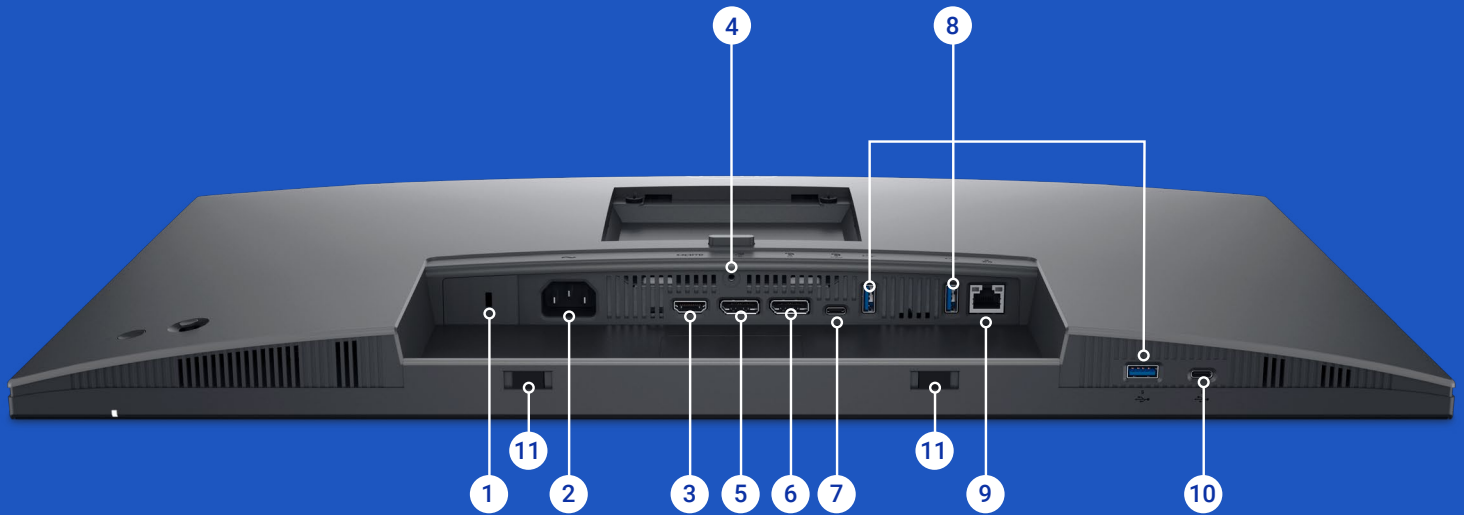
Compatibility

Dell Display Manager is compatible with Windows operating systems only. For macOS®, please download the Dell Display and Peripheral Manager software.

[Download Dell Display Manager](#)

¹ Tools including SCCM/InTune and Command Line Interface scripts.


Ports & Slots



- | | | | |
|----------|---------------------------------|-----------|---|
| 1 | Security lock slot ¹ | 7 | USB 3.2 Gen1 Type-C upstream |
| 2 | Power connector | 8 | USB 3.2 Gen1 Type-A downstream (3) |
| 3 | HDMI | 9 | RJ45 |
| 4 | Stand-lock | 10 | USB 3.2 Gen1 Type-C downstream
(PD of up to 15W) |
| 5 | DisplayPort (in) | 11 | Soundbar slots |
| 6 | DisplayPort (out) | | |

¹ Based on Kensington Security Slot™

FEATURE	TECHNICAL SPECIFICATION
MODEL	Dell 27 USB-C Hub Monitor - P2725HE
DIAGONAL VIEWING SIZE	68.60 cm (27.0")
PRESET DISPLAY AREA (H X V)	597.89 mm x 336.31 mm (23.54" x 13.24")
PANEL TYPE	In-Plane Switching (IPS) technology
DISPLAY SCREEN COATING	Anti-glare with 3H hardness
MAXIMUM PRESET RESOLUTION	1920 x 1080
REFRESH RATE	Up to 100Hz
VIEWING ANGLE	178° vertical / 178° horizontal
PIXEL PITCH	0.3114 mm x 0.3114 mm
PIXEL PER INCH (PPI)	81.57
CONTRAST RATIO	1,500: 1 (typical)
ASPECT RATIO	16:9
BACKLIGHT TECHNOLOGY	LED edgelight system
BRIGHTNESS	300 cd/m ² (typical)
RESPONSE TIME	5ms gray-to-gray (Fast mode) 8ms gray-to-gray (Normal mode)
COLOR SUPPORT	Color Gamut: 99% sRGB Color Depth: Up to 16.7 million colors
TÜV EYE COMFORT	Yes, 4-Star
FLICKER FREE	Yes
CONNECTIVITY	<ul style="list-style-type: none"> 1 x HDMI 1.4 (HDCP 1.4) (Supports up to FHD 1920 x 1080 100Hz TMDS as per specified in HDMI 1.4) 1 x DP 1.4 (HDCP 1.4) 1 x DP-out (1.4) with MST (HDCP 1.4) 1 x RJ45 1 x USB 3.2 Gen1 Type-C upstream (Alt. mode with DP1.4) with up to 90W PD 3 x USB 3.2 Gen1 Type-A downstream 1 x USB 3.2 Gen1 Type-C downstream with up to 15W PD (data only)
USB POWER DELIVERY	Yes, up to 90W via USB-C upstream (Alt. mode with DP1.4) port, and up to 15W via USB-C downstream port
ADJUSTABILITY	Height: Up to 150 mm (5.9") Tilt: -5° ~ 21° Swivel: -45° ~ 45° Pivot: -90° ~ 90°
DAISY CHAIN AVAILABILITY	Yes
DELL POWER BUTTON SYNC	Yes, via USB Type-C upstream port
DELL DISPLAY MANAGER COMPATIBILITY	Yes with Easy Arrange
REMOTE ASSET MANAGEMENT	Yes
SPECIFICATIONS - SERVICE / SUPPORT DETAILS	3 Year Limited Hardware Warranty with Advanced Exchange Service and Premium Panel Exchange

FEATURE	TECHNICAL SPECIFICATION
VOLTAGE REQUIRED	100 VAC to 240 VAC / 50 Hz or 60 Hz ± 3 Hz / 2 A (typ)
ENERGY EFFICIENCY CLASS (A TO G SCALE)	D 
POWER CONSUMPTION (OPERATIONAL) (TYPICAL)	0.3 W (Off mode) 0.4 W (Standby mode) 1.9 W (Networked Standby mode) 16.2 W (On mode) 180 W (Max) 16.6 W (Pon) 54.9 kWh (TEC)
AUDIO OUTPUT	Optional soundbar (sold separately)
HEIGHT WITH STAND (COMPRESSED ~ EXTENDED)	384.56 mm ~ 534.56 mm (15.14" ~ 21.05")
WIDTH WITH STAND	610.68 mm (24.04")
DEPTH WITH STAND	192.28 mm (7.57")
HEIGHT WITHOUT STAND	354.71 mm (13.97")
WIDTH WITHOUT STAND	610.68 mm (24.04")
DEPTH WITHOUT STAND	50.03 mm (1.97")
WEIGHT (PANEL ONLY - FOR VESA MOUNT)	4.36 kg (9.61 lbs)
WEIGHT (WITH PACKAGING)	8.67 kg (19.11 lbs)
SECURITY	Security-lock slot (based on Kensington Security Slot™)
COMPLIANT STANDARDS	<ul style="list-style-type: none"> ENERGY® STAR certified monitor EPEAT® GOLD EPEAT® Climate+ TCO Certified Displays TCO Certified Edge RoHS-compliant BFR / PVC free monitor (excluding external cables) Arsenic-free glass and mercury-free (panel only)
FLAT PANEL MOUNT INTERFACE	VESA (100 mm x 100mm)
TEMPERATURE RANGE	Operating: 0°C ~ 40°C (32°F ~ 104°F) Non-operating: -20° ~ 60°C (-4° ~ 140°F)
HUMIDITY RANGE	Operating: 10% ~ 80% (non-condensing) Non-operating: 5% ~ 90% (non-condensing)
ALTITUDE	Operating: 5,000 m (16,404 ft) max Non-operating: 12,192 m (40,000 ft) max
WHAT'S INCLUDED	1 x Monitor panel 1 x Stand riser and base 1 x Power cord 1 x DP-to-DP cable, 1.8m 1 x USB 3.2 Gen2 Type C-to-C cable, 1.0m 1 x Cable tie 1 x Quick setup guide 1 x Safety, Environmental, and Regulatory Information

Steadfast reliability

As the No. 1 monitor company worldwide*, we take pride in our unyielding commitment to quality and the utmost in customer satisfaction.

Premium Panel Exchange

Dell Premium Panel Exchange¹ allows a free monitor replacement during the Limited Hardware Warranty² period even if only one bright pixel is found.

Advanced Exchange Service

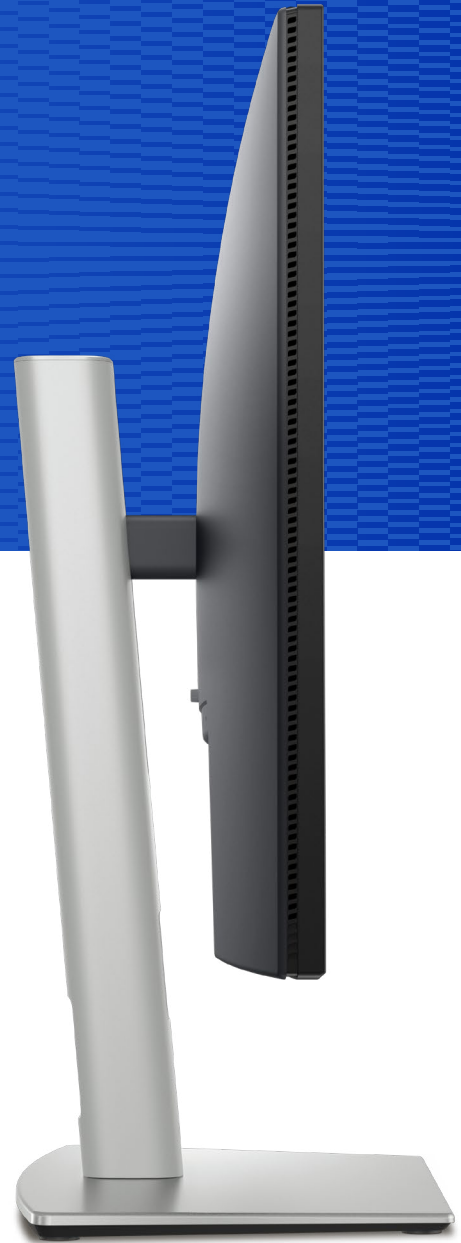
This monitor comes with a 3-year Advanced Exchange Service³ so that if a replacement becomes necessary, it will be shipped to you the next business day during your 3-year Limited Hardware Warranty.²

ProSupport

Upgrade to 24x7 specialized technical phone support with the Dell ProSupport option.⁴

Optimal integration

Dell Monitor is designed to work seamlessly with our PC and accessories. Visit the support page to find out more.



*Dell monitors are #1 Worldwide for 9 years! Source: IDC Worldwide Quarterly PC Monitor Tracker, Q3 2023. From 2014 to 2023.

¹ Applicable to Dell UltraSharp, P Series, and C Series desktop monitors.

² For copy of Ltd Hardware Warranty, write to Dell USA LP, Attn: Warranties, One Dell Way, Round Rock, TX 78682 or see <https://www.dell.com/warranty>.

³ Advanced Exchange: Dell will send you a replacement monitor the next business day in most cases, if deemed necessary after phone/online diagnosis. Shipping times may vary by location and for monitors 55" and above. Fee charged for failure to return defective unit. See [dell.com/servicecontracts/global](https://www.dell.com/servicecontracts/global).

⁴ Availability varies, please visit www.dell.com/support for details. In some countries, hours for in-region support may vary. Support after local business hours may be provided in a language other than the local language.

Technical specifications subject to change without prior notice. Product availability varies by country. Please contact your Dell representative for more information.

© 2024 Dell Inc. or its subsidiaries. All Rights Reserved. Dell Technologies, Dell, EMC, Dell EMC and other trademarks are trademarks of Dell Inc. or its subsidiaries. Other trademarks may be trademarks of their respective owners. USB Type-C® and USB-C® are registered trademarks of USB Implementers Forum. Thunderbolt and the Thunderbolt logo are trademarks of Intel Corporation in the U.S. and/or other countries.